

Precision 75 Ohm F Female to 75 Ohm F Female Adapter



LCAD9797

Configuration

- F Female Connector 1
- F Female Connector 2
- 75 Ohm
- Precision Design
- Straight Body Geometry

Features

Applications

Description

L-com's LCAD9797 precision 75 ohm type F female to type F female adapter is part of our full line of RF components available for same-day shipping. Our type F to type F adapter has a female to female gender configuration in a precision design. LCAD9797 type F female to type F female adapter operates to 3 GHz. The L-com RF adapter provides good VSWR of 1.28:1 maximum.

RF adapters are often used to enable connections between two connector types that would otherwise not mate. Certain adapter configurations can also be used to protect connectors on expensive equipment where the number of connect/ disconnect cycles is high. An RF, microwave or millimeter wave adapter is connected to the equipment, and the commonly changed connection is made with the adapter which can be easily replaced when it wears out after high usage; such adapters are referred to as connector savers. L-com also offers bulkhead, panel mount, hermetically sealed, reverse polarity, and isolated ground adapter varieties to serve all of your RF, microwave and millimeter wave needs.

Electrical Specifications

Description	Minimum	Typical	Maximum	Units
Frequency Range	DC		3	GHz
Impedance		75 Ohm		
VSWR			1.28:1	
Return Loss			18	dB
Insertion Loss			0.5	dB

Mechanical Specifications

Size

Length	1.02 in [25.91 mm]
Width	0.50 in [12.70 mm]
Height	0.50 in [12.70 mm]
Weight	0.02 lbs [10.21 g]

Description	Connector 1	Connector 2
Type	F Female	F Female
Polarity	Standard	Standard

Precision 75 Ohm F Female to 75 Ohm F Female Adapter



LCAD9797

Material Specifications

Description	Connector 1		Connector 2	
	Material	Plating	Material	Plating
Type	F Female		F Female	
Contact	Beryllium Copper	Gold	Beryllium Copper	Gold
Outer Conductor	Brass	Nickel	Brass	Nickel
Body	Brass	Nickel	Brass	Nickel

Compliance Certifications (see [product page](#) for current document)

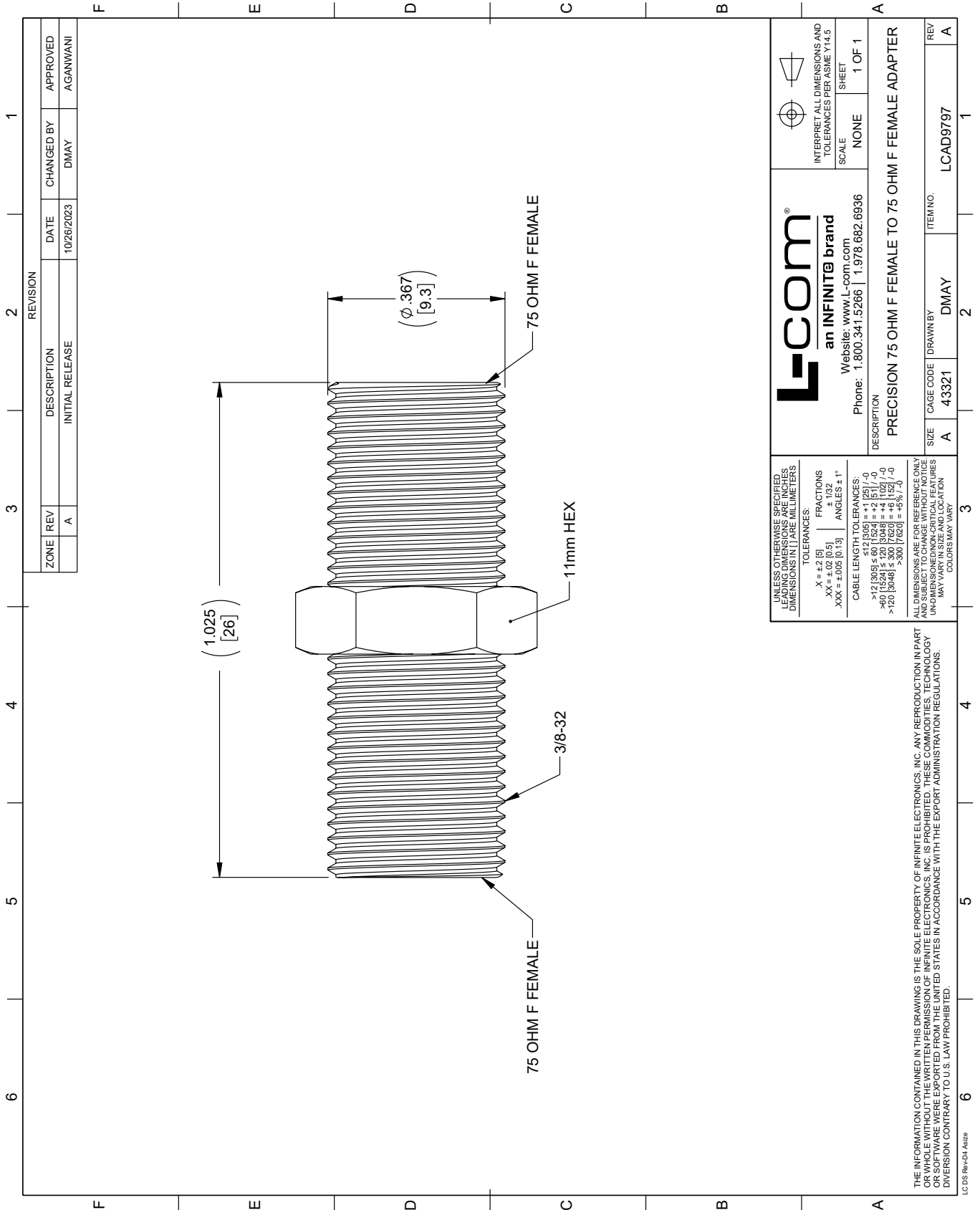
Precision 75 Ohm F Female to 75 Ohm F Female Adapter from L-com has same day shipment for domestic and International orders. Our portfolio includes coaxial cable assemblies, connectors, adapters and custom products as well as lightning and surge protectors, NEMA rated enclosures, and an RF product line which includes antennas, amplifiers, passive, and active components.

URL: <https://www.l-com.com/f-female-f-female-straight-adapter-lcad9797-p.aspx>


The information contained within this document is accurate to the best of our knowledge and representative of the part described herein. It may be necessary to make modifications to the part and/or the documentation of the part in order to implement improvements. L-com reserves the right to make such changes as required. Unless otherwise stated, all specifications are nominal. L-com does not make any representation or warranty regarding the suitability of the part described herein for any particular purpose, and L-com does not assume liability arising out of the use of any part or document.

LCAD9797 CAD Drawing

Precision 75 Ohm F Female to 75 Ohm F Female Adapter



REVISION		DATE	CHANGED BY	APPROVED	
ZONE	REV	DESCRIPTION	DATE	CHANGED BY	APPROVED
	A	INITIAL RELEASE	10/26/2023	DMAY	AGANWANI

 an INFINITE brand Website: www.L-com.com		INTERPRET ALL DIMENSIONS AND TOLERANCES PER ASME Y14.5 SCALE: NONE SHEET: 1 OF 1
Phone: 1.800.341.5266 1.978.682.6936		
DESCRIPTION: PRECISION 75 OHM F FEMALE TO 75 OHM F FEMALE ADAPTER		
SIZE	CAGE CODE	ITEM NO.
A	43321	LCAD9797
SIZE	DRAWN BY	REV
A	DMAY	A

UNLESS OTHERWISE SPECIFIED, LEADING DIMENSIONS ARE IN INCHES. DIMENSIONS IN [] ARE MILLIMETERS.

TOLERANCES:
 .X = ±.2 [5] FRACTIONS ± 1/32
 .XX = ±.02 [0.5] ANGLES ± 1°
 .XXX = ±.005 [0.13]

CABLE LENGTH TOLERANCES:
 <12 [305] ≤ 60 [1524] = ±.1 [25] / -0
 >60 [1524] ≤ 120 [3048] = ±.4 [102] / -0
 >120 [3048] ≤ 300 [7620] = ±.8 [20] / -0

ALL DIMENSIONS ARE FOR REFERENCE ONLY. UNDIMENSIONED/NON-CRITICAL FEATURES MAY VARY IN SIZE AND LOCATION. COLORS MAY VARY.

THE INFORMATION CONTAINED IN THIS DRAWING IS THE SOLE PROPERTY OF INFINITE ELECTRONICS, INC. ANY REPRODUCTION IN PART OR WHOLE WITHOUT THE WRITTEN PERMISSION OF INFINITE ELECTRONICS, INC. IS PROHIBITED. THESE COMMODITIES, TECHNOLOGY OR SERVICES WERE EXPORTED FROM THE UNITED STATES IN ACCORDANCE WITH THE EXPORT ADMINISTRATION REGULATIONS. DIVERSION CONTRARY TO U.S. LAW PROHIBITED.

LC 05 Rev-D4 Altize