

## TRB 3-Lug Jack Insulated Bulkhead to Blunt Cut 1553 Cable 12" Using 124 Ohm TWC-124-2 Twinax

### LC3MSA00665-12



#### Configuration

- Connector 1: TRB 3-Lug Jack Bulkhead Insulated
- Connector 2: Blunt Cut Genderless
- Cable Type: TWC-124-2

#### Features

- 124 ohms
- Twinaxial
- MIL-STD-1553B
- -40°C to +80°C
- Lead Free Solder
- Standard and Custom Lengths Available

#### Applications

- MIL-STD-1553B Applications
- Data Transmission

#### Description

L-com's LC3MSA00665-12 is a TRB 3-Lug jack insulated bulkhead to blunt cut 1553 cable 12" using 124 Ohm TWC-124-2 twinax and ships same-day. These flexible RF cable assemblies are ideal for applications where flexure is required. Our L-com TRB 3-Lug to Blunt Cut cable assembly has a jack to genderless gender configuration with 78 Ohm flexible TWC-124-2 series coax and operates to 500 MHz.

Custom versions of this TRB 3-Lug jack to TRB 3-Lug genderless cable, along with the rest of L-com's other RF assemblies, can also be built and shipped same day. Other available RF cable assembly value added services from L-com include connector orientation or clocking, heat shrink booting and custom labeling. RF testing can also be performed to document the electrical performance of your cable assembly. Contact a sales representative for testing or custom RF cable quotes. Part number LC3MSA00665-12 L-com TRB 3-Lug Jack Insulated Bulkhead to Blunt Cut 1553 Cable 12" Using 124 Ohm TWC-124-2 Twinax data sheet PDF includes details of the RF product specifications, CAD drawing(s) and dimensions below.

#### Electrical Specifications

Description	Minimum	Typical	Maximum	Units
Frequency Range	DC		500	MHz
Capacitance		12.3 [40.35]		pF/ft [pF/m]
Operating Voltage (AC)			1,000	Vrms

Insertion Loss (Typ.)

#### Mechanical Specifications

##### Cable Assembly

Length*	12 in [304.8 mm]
Weight	0.25 lbs [113.4 g]

##### Cable

Cable Type	TWC-124-2
Impedance	124 Ohms
Inner Conductor Type	Stranded
Inner Conductor Material and Plating	Copper, Silver

TRB 3-Lug Jack Insulated Bulkhead to Blunt Cut 1553 Cable  
12" Using 124 Ohm TWC-124-2 Twinax



## LC3MSA00665-12

Dielectric Type	PE
Shield Layer 1	Silver Plated Copper
Jacket Material	PVC, Blue
One Time Minimum Bend Radius	1.25 in [31.75 mm]

### Connectors

Description	Connector 1	Connector 2
Type	TRB 3-Lug Jack Bulkhead Insulated	Blunt Cut Genderless
Specification	MIL-STD-1553	
Impedance	78 Ohms	
Contact Material and Plating	Bronze, Gold 30 micro inches	
Contact Plating Specification	ASTM-B-488	
Dielectric Type	Teflon	
Outer Conductor Material and Plating	Phosphor Bronze, Gold	
Outer Conductor Plating Specification	30 micro inches	
Body Material and Plating	Brass, Nickel	
Body Plating Specification	ASTM-B-733	

### Environmental Specifications

<b>Temperature</b>	
Operating Range	-40 to +80 deg C

**Compliance Certifications** (see [product page](#) for current document)

### Plotted and Other Data

Notes:

TRB 3-Lug Jack Insulated Bulkhead to Blunt Cut 1553 Cable  
12" Using 124 Ohm TWC-124-2 Twinax



**LC3MSA00665-12**

## How to Order

Part Number Configuration:

**LC3MSA00665**

- **xx**

**uu**

Unit of Measure:  
cm = Centimeters  
<blank> = Inches  
Length  
Base Number

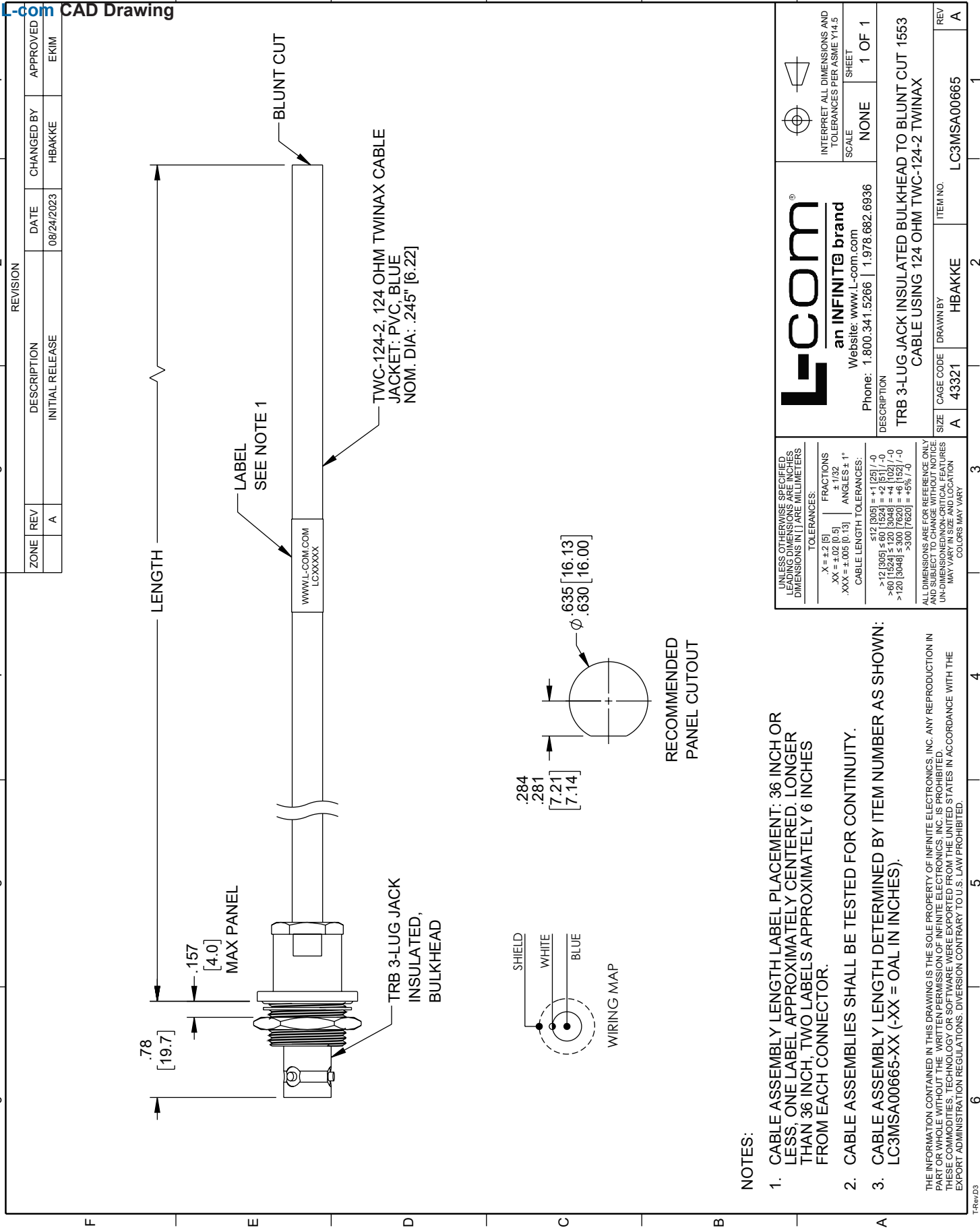
Example: LC3MSA00665-12 = 12 inches long cable  
LC3MSA00665-100cm = 100 cm long cable

TRB 3-Lug Jack Insulated Bulkhead to Blunt Cut 1553 Cable 12" Using 124 Ohm TWC-124-2 Twinax from L-com has same day shipment for domestic and International orders. L-com is a leading manufacturer of wired and wireless connectivity products and committed to in-stock availability and same day shipping. Our portfolio includes coaxial cable assemblies, connectors, adapters and custom products as well as lightning and surge protectors, NEMA rated enclosures, and an RF product line which includes antennas, amplifiers, passive, and active components.

The information contained within this document is accurate to the best of our knowledge and representative of the part described herein. It may be necessary to make modifications to the part and/or the documentation of the part in order to implement improvements. L-com reserves the right to make such changes as required. Unless otherwise stated, all specifications are nominal. L-com does not make any representation or warranty regarding the suitability of the part described herein for any particular purpose, and L-com does not assume liability arising out of the use of any part or document contained within this document is accurate to the best of our knowledge and representative of the part described herein. It may be necessary to make modifications to the part and/or the documentation of the part in order to implement improvements. L-com reserves the right to make such changes as required. Unless otherwise stated, all specifications are nominal. L-com does not make any representation or warranty regarding the suitability of the part described herein for any particular purpose, and L-com does not assume liability arising out of the use of any part or document.

TRB 3-Lug Jack Insulated Bulkhead to Blunt Cut 1553 Cable 12" Using 124 Ohm TWC-124-2 Twinax

L-com CAD Drawing



TRevD3