

HGX-AMOUNT02 Installation Guide

Components Included:

- (1) Universal Wall/Shelf/NEMA Mounting Bracket
- (2) #6-32 x 1/4" Screw
- (2) #6-32 x 1/4" Self-Tapping Screw
- (2) #10-32 x 3/8" Screw
- (2) #10 x 1" Sheet Metal Screw
- (2) #10 Wall Anchor

Mounting in NEMA Enclosure:

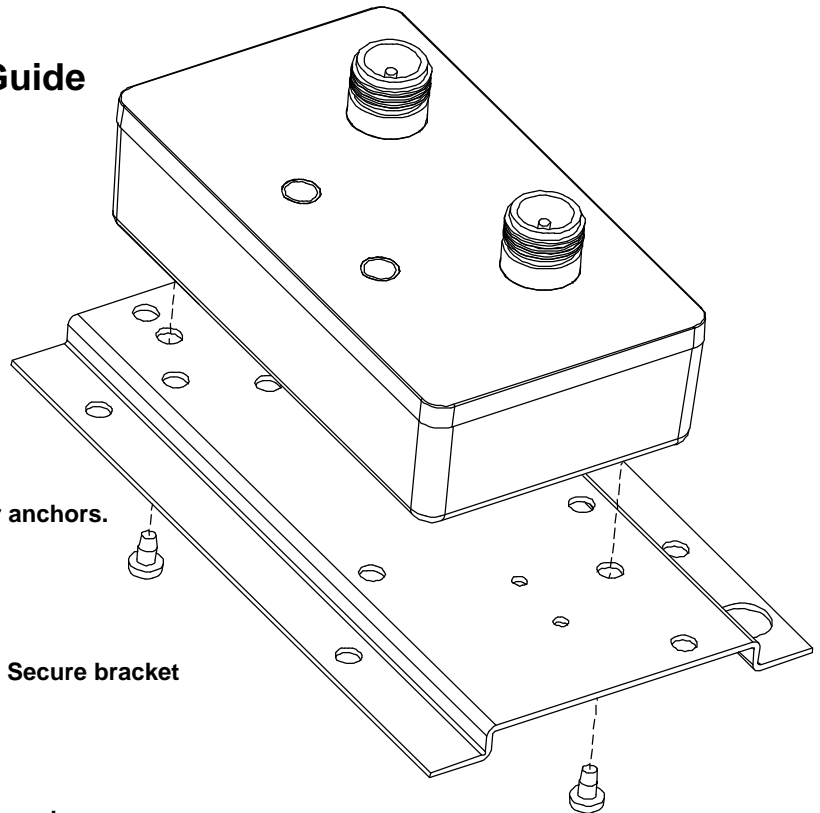
Use the (2) #6-32 x 1/4" screws to secure to the NEMA Enclosure Mounting Plate.

Mounting to Wall:

Use bracket as template to drill holes in wall for anchors. Install anchors and secure bracket using (2) #10 x 1" screws.

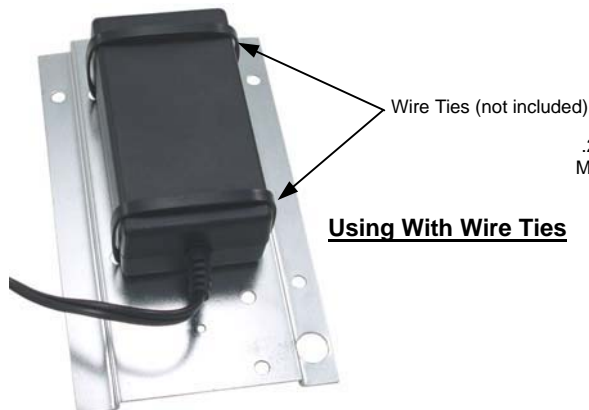
Shelf Mounting:

Use bracket as a template to drill holes in shelf. Secure bracket using (2) #10 x 1" screws.



Mounting Guide

- WT** - Wire Tie Holes, for securing power supplies and equipment without mounting provisions (see below)
- SC** - HyperLink products in 3.5" x 1.9" case, SC2402N, SC5802N BT-CAT5-P1 models and HGLN-CAT6. Secure to bracket with (2) #6-32 x 1/4" self-tapping screw
- CA** - HyperLink HA2401M-AGC Amplifiers Secure to bracket with (2) #6-32 x 1/4" self-tapping screw
- DX** - HyperLink products in 4.6" x 2.6" case, HA2401G/GI/AGC/DX-AGC/F-AGC Amplifiers, all HA2401 Fixed Gain amplifiers and 2/3/4 Way Signal Splitters Secure to bracket with (2) #10-32 x 3/8" screw
- XL** - HyperLink Amplifiers in 5.8" x 2.4" case, HA2401GX/GXI/XL/DX-XL Secure to bracket with (2) #10-32 x 3/8" screw



Using With Wire Ties

