

615 MHz-960 MHz / 1710 MHz-2700 MHz / 3300 MHz-4200 MHz, 1-4 dBi,
4G 5G Rubber Duck / Terminal antenna - SMA Male Connector



HG63804RD-SM

Features

- 0 to 4 dBi Gain
- Tilt and Swivel Design
- SMA Male Connector
- Blade Design

Applications

- Infotainment Systems, Routers, WiFi Hotspots, HD Video Transmission, Gateways, Dash Cameras, Public Transportation
- Connected Cars or Self-Driving Cars, Fleet Management, Logistics
- 4G & 5G Networks
- 600, 700, 800, 850, 900, 1800, 1900, 2100, 2600, 3500 MHz Bands
- IoT, Cellular, Zigbee, Z-Wave, Bluetooth, CBRS, WiFi, C-Band

Description

The HG63804RD-SM 5G Rubber Duck Antenna from L-com is a high performance omnidirectional “rubber-duck” antenna designed for the 615 MHz to 4200 MHz bands and is available to ship same day. It features a tilt-and-swivel SMA-Plug (male) connector, allowing them to be used vertically, at a right angle, or any angle in-between. It is a coaxial sleeve design with an omni-directional pattern. The HG63804RD-SM is ideally suited 4G, 5G, LTE, CBRS bands.

The L-com high performance rubber-duck HG63804RD-SM is a flexible antenna providing broad coverage and 1-4 dBi gain. This SMA male rubber duck is suitable for commercial radios in public and private 5G and Cellular networks that are equipped with SMA female connectors. L-com’s HG63804RD-SM supports 600, 700, 800, 850, 900, 1800, 2100, 2400, 2600, and 3500 MHz bands.

This 5G 615 MHz to 4200 MHz rubber duck antenna with a SMA male connector, as well as our wide selection of superior quality RF parts, ships same day. Contact our knowledgeable and friendly technical support and sales staff for your answers on antennas or other L-com products.

Configuration

Design	Portable
Band Type	Multi
Radiation Pattern	Omnidirectional
Polarization	Vertical
Connector Type	SMA Male

Electrical Specifications

Description	Minimum	Typical	Maximum	Units
Frequency Range	615		4,200	MHz
Input VSWR			3:1	
Impedance		50		Ohms
Gain		4.5		dBi
Gain	3			dBi
Input Power			5	Watts

Click the following link (or enter part number in “SEARCH” on website) to obtain additional part information including price, inventory and certifications:
[615 MHz-960 MHz / 1710 MHz-2700 MHz / 3300 MHz-4200 MHz, 1-4 dBi, 4G 5G Rubber Duck / Terminal antenna - SMA Male Connector HG63804RD-SM](#)

615 MHz-960 MHz / 1710 MHz-2700 MHz / 3300 MHz-4200 MHz, 1-4 dBi,
4G 5G Rubber Duck / Terminal antenna - SMA Male Connector



HG63804RD-SM

Specifications by Band

Description	Band 1	Band 2	Band 3	Band 4	Band 5	Units
Range	0.615 to 0.96	1.4 to 2.7	3.3 to 4.2			GHz
Gain	3	4.5	2			dBi

Mechanical Specifications

Radome Material	ABS
Width	0.79 in [20.07 mm]
Height	5.33 in [135.38 mm]

Connectors

Description	Connector 1	Connector 2	Connector 3
A	B	C	D
Body Material and Plating	Brass		

Environmental Specifications

Temperature	
Operating Range	-20 to +65 deg C
Storage Range	-20 to +65 deg C

Compliance Certifications (see [product page](#) for current document)

Plotted and Other Data

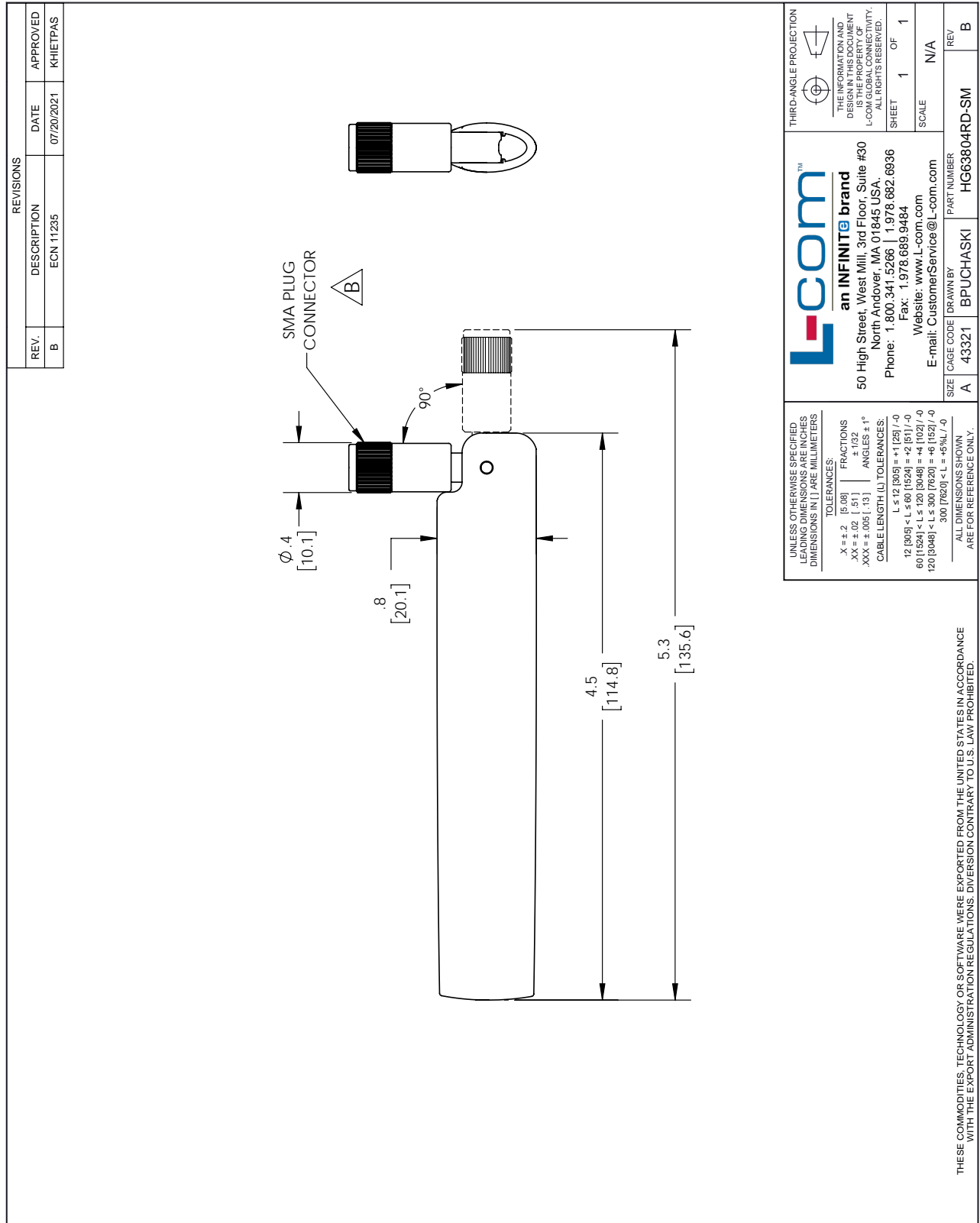
Notes:

615 MHz-960 MHz / 1710 MHz-2700 MHz / 3300 MHz-4200 MHz, 1-4 dBi, 4G 5G Rubber Duck / Terminal antenna - SMA Male Connector from L-com has same day shipment for domestic and International orders. Our portfolio includes coaxial cable assemblies, connectors, adapters and custom products as well as lightning and surge protectors, NEMA rated enclosures, and an RF product line which includes antennas, amplifiers, passive, and active components.

The information contained within this document is accurate to the best of our knowledge and representative of the part described herein. It may be necessary to make modifications to the part and/or the documentation of the part in order to implement improvements. L-com reserves the right to make such changes as required. Unless otherwise stated, all specifications are nominal. L-com does not make any representation or warranty regarding the suitability of the part described herein for any particular purpose, and L-com does not assume liability arising out of the use of any part or document.

615 MHz-960 MHz / 1710 MHz-2700 MHz / 3300 MHz-4200 MHz, 1-4 dBi,
 4G 5G Rubber Duck / Terminal antenna - SMA Male Connector

L-com CAD Drawing



<p>UNLESS OTHERWISE SPECIFIED LEADING DIMENSIONS ARE IN INCHES DIMENSIONS IN [] ARE MILLIMETERS</p> <p>TOLERANCES:</p> <p>.X = ±.2 [5.08] FRACTIONS ± 1/32 .XX = ±.02 [1.51] ANGLES ± 1° .XXX = ±.005 [1.3]</p> <p>CABLE LENGTH (L) TOLERANCES:</p> <p>L ≤ 12 [305] = ±.125 [-0] 12 [305] < L ≤ 60 [1524] = ±.152 [-0] 60 [1524] < L ≤ 120 [3048] = ±.152 [-0] 120 [3048] < L ≤ 300 [7620] = ±.152 [-0] 300 [7620] < L = +5%/-0</p> <p>ALL DIMENSIONS SHOWN ARE FOR REFERENCE ONLY.</p>	<p style="text-align: center;">L-comTM an INFINITE brand</p> <p>50 High Street, West Mill, 3rd Floor, Suite #30 North Andover, MA 01845, USA. Phone: 1.800.341.5266 1.978.682.6936 Fax: 1.978.689.9484 Website: www.L-com.com E-mail: CustomerService@L-com.com</p>	<p>THIRD-ANGLE PROJECTION</p> <p>THE INFORMATION AND DIMENSIONS SHOWN ARE THE PROPERTY OF L-COM GLOBAL CONNECTIVITY. ALL RIGHTS RESERVED.</p> <p>SHEET 1 OF 1</p> <p>SCALE N/A</p>
<p>SIZE A</p> <p>CAGE CODE 43321</p> <p>DRAWN BY BPUCHASKI</p>	<p>PART NUMBER HG63804RD-SM</p>	<p>REV B</p>