

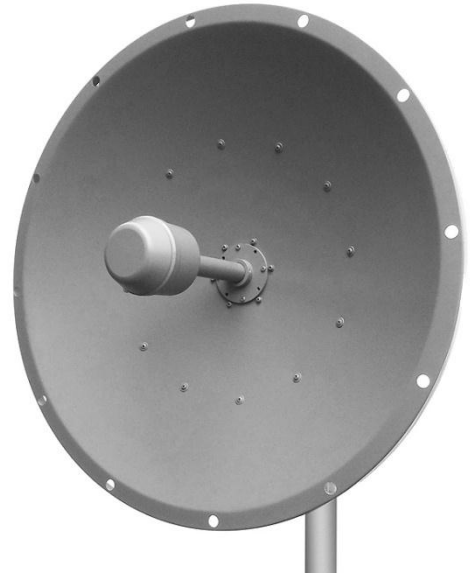
HyperLink Wireless 2.4 GHz 22 dBi Dual & X Polarized/Dual Feed Parabolic Dish Antenna - Model: HG2422DPD

Applications

- 2.4 GHz ISM band
- IEEE 802.11b/g/n wireless LAN, WiFi systems
- Long range directional applications
- Point to point and point to multi-point applications
- Wireless bridges and backhaul applications

Features

- Aluminum reflector dish with UV stable light gray polymer finish
- Adjustable Dual and X Polarity feed horn system
- (2) N-Female connectors
- Includes tilt and swivel mast mount kit
- Optional radome cover kits available



Description

The HyperLink HG2422DPD is a high performance 22 dBi dual polarized parabolic dish antenna ideal for long range directional applications such as point to point systems, point to multi-point and wireless bridges. It is designed for use in the 2.4GHz ISM band as well as IEEE 802.11b/g/n wireless LAN systems.

Adjustable Dual Polarity Feed Horn System

The HG2422DPD features an adjustable dual polarity feed horn system which allows the antenna to be configured for Dual Polarization (horizontal and vertical) or for X-Polarization ($+45^\circ$ and -45°). It is fed via two N-Female antenna leads, one for each polarized signals. This feature makes it ideal for MIMO/802.11n and polarization diversity systems. For outdoor 802.11n or MIMO applications, two polarization diverse antennas are required for the radio to operate at its highest data rate. These features make this antenna ideal for MIMO systems.

Rugged and Weatherproof

The reflector dish of the HG2422DPD is constructed from high quality aluminum which gives it superior strength. The dish is coated in a light gray UV-inhibited polymer for durability and aesthetics. The small diameter of the dish helps minimize wind loading. Supplied with the antenna is a tilt and swivel mast mount kit. This allows installation at various degrees of incline for easy alignment.



Optional Radome Cover – HGR-06

HyperLink Radome Covers are an ideal way to provide additional protection to our parabolic dish antennas. These light weight radome kits feature fiberglass construction and UV stable gray finish. Drain holes are provided on the radome cover to help prevent moisture build-up inside the dish antenna.

These radome kits bolt directly to the dish antennas with the provided stainless steel hardware. Drilling mounting holes in the antenna is not required. The radome cover can be attached to existing antennas already mounted in the field or pre-assemble to the antenna before mounting.



Specifications

Electrical Specifications

Frequency Range	2400 – 2500 MHz
Gain	22 dBi
Polarization	Adjustable - Dual Polarized (Vertical and Horizontal) or X-Polarized (+45° and -45°)
Horizontal Beam Width	13°
Vertical Beam Width	13°
VSWR	< 1.5 typical
F/B Ratio	> 30 dB
Cross-Pol Isolation	> 28 dB
Max Input Power	100W
Input Impedance	50 Ohm
Lightning Protection	DC Ground

Mechanical Specifications

Connectors	(2) N-Female
Diameter	23.62 in. (600mm)
Weight	11.2 lbs. (5.1kg)
Mounting Mast Size (Dia.)	1.57 - 2.36 in. (40 - 60mm)
Rated Wind Velocity	130.5 mph (210km/h)

Wind Loading Data

Wind Speed (MPH)	Loading
100	157 lb.
125	245 lb.

RF Antenna Patterns

