

Fiber Optic Transceiver, SFP+, BiDi, 10G DDM, Arista Compatible



## FXC-SPB-wwxx-10-ARI

### Features

- Operating Data Rates up to 11.3 Gbps
- Distance Range 10, 40, 60 & 80 km
- Pluggable Bi-Directional SFP+ Simplex LC Connectors
- Standard Temperature Range (available in Industrial Operating Temperatures)
- Compliant with Arista system level specifications

### Applications

- Telecommunication Service Providers
- Metro Ethernet
- OTN And Other Optical Links
- Transport Networks
- Enterprise Optical Networks
- Carrier Ethernet

### Description

The L-com FXC-SPB-wwxx-10-ARI is the highest quality Bi-Directional SFP+ transceiver series in the industry that delivers a dependable 10G Ethernet data rates. This SFP+ BiDi transceiver series has been designed, programmed and tested to be 100% compliant with the Arista system level specifications. The L-com FXC-SPB-wwxx-10-ARI series has different distances options of 10, 40, 60 & 80 km to meet current and future networking requirements. The L-com FXC-SPB-wwxx-10-ARI series features digital diagnostics for performance monitoring of this BiDi transceiver. The L-com FXC-SPB-wwxx-10-ARI series is one of thousands of fiber optic connectivity products available with in-stock inventory and ready to ship. Contact our technical support and sales staff with your questions on fiber optic connectivity or other L-com products.

### Configuration

Data Rate	10 Gbps
Form Factor	SFP+
Connector	LC
Connector Mode	Simplex
Mfg Platform Compatibility	Arista

### Electrical Specifications

Description	Minimum	Typical	Maximum	Units
Power Supply Voltage	3.15	3.3	3.45	V
Power Supply Current			430	mA

\*See table below

Click the following link (or enter part number in "SEARCH" on website) to obtain additional part information including price, inventory and certifications:  
[FXC-SPB-wwxx-10-ARI](#)

Fiber Optic Transceiver, SFP+, BiDi, 10G DDM, Arista Compatible



## FXC-SPB-wwxx-10-ARI

### Optical Specifications

Base Part Number	Distance (km)	Wavelength pair designator (ww)	Transmitter center wavelength (nm)	Receiver center wavelength (nm)	Transmitter Output (min/max) dBm	Receiver Sensitivity (min) dBm
FXC-SPB-ww10-10	10	23	1270	1330	-5/0	-14
		32	1330	1270	-5/0	-14
FXC-SPB-ww40-10	40	23	1270	1330	1/5	-15
		32	1330	1270	1/5	-15
FXC-SPB-ww60-10	60	23	1270	1330	1/6	-20
		32	1330	1270	1/6	-20
FXC-SPB-ww80-10	80	45	1490	1550	-1/4	-20
		54	1550	1490	-1/4	-20

#### Size

Length 1.755 in [44.58 mm]  
Weight 0.05 lbs [22.68 g]

### Environmental Specifications

#### Temperature

Operating Range 0 to +70 deg C  
Storage Range -40 to +85 deg C

Notes:

**Compliance Certifications** (see [product page](#) for current document)

### Plotted and Other Data

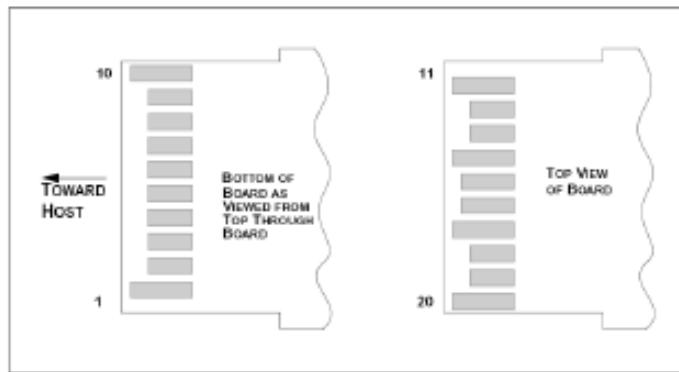
Notes:

Fiber Optic Transceiver, SFP+, BiDi, 10G DDM, Arista Compatible

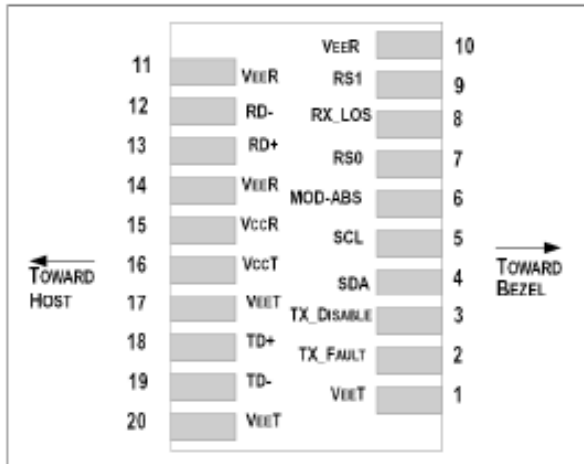


**FXC-SPB-wwxx-10-ARI**

**SFP+ Transceiver Electrical Pad Layout**



**Pin Function Definitions**



Fiber Optic Transceiver, SFP+, BiDi, 10G DDM, Arista Compatible



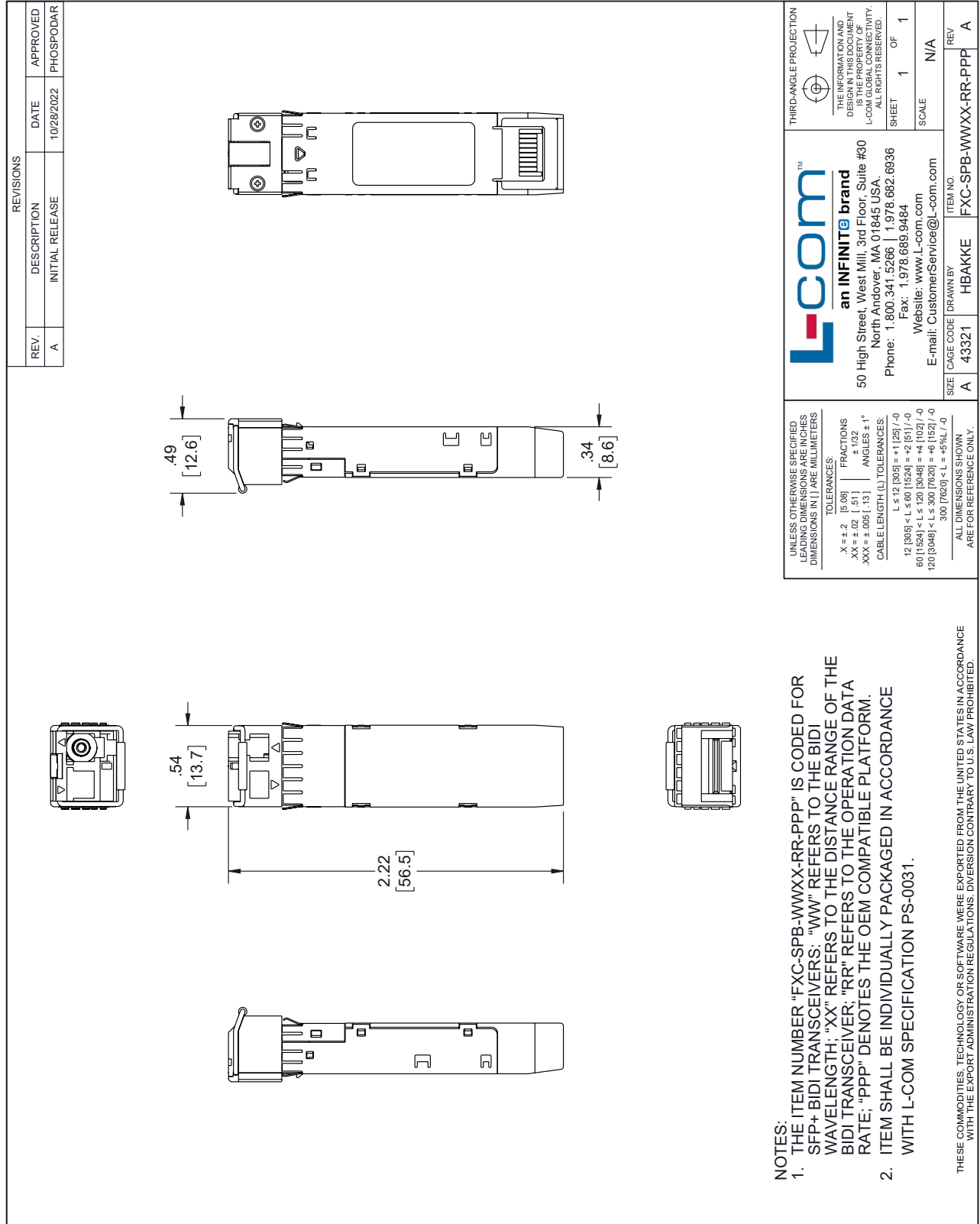
## FXC-SPB-wwxx-10-ARI

Pin Num.	Name	FUNCTION	Plug Seq.	Notes
1	VeeT	Transmitter Ground	1	Note 5
2	TX Fault	Transmitter Fault Indication	3	Note 1
3	TX Disable	Transmitter Disable	3	Note 2, Module disables on high or open
4	SDA	Module Definition 2	3	2-wire Serial Interface Data Line.
5	SCL	Module Definition 1	3	2-wire Serial Interface Clock.
6	MOD_ABS	Module Definition 0	3	Note 3
7	RS0	RX Rate Select (LVTTTL).	3	No Function Implement.
8	RX LOS	Loss of Signal	3	Note 4
9	RS1	TX Rate Select (LVTTTL).	1	No Function Implement.
10	VeeR	Receiver Ground	1	Note 5
11	VeeR	Receiver Ground	1	Note 5
12	RD-	Inv. Received Data Out	3	Note 6
13	RD+	Received Data Out	3	Note 6
14	VeeR	Receiver Ground	1	Note 5
15	VccR	Receiver Power	2	3.3 ± 5%, Note 7
16	VccT	Transmitter Power	2	3.3 ± 5%, Note 7
17	VeeT	Transmitter Ground	1	Note 5
18	TD+	Transmit Data In	3	Note 8
19	TD-	Inv. Transmit Data In	3	Note 8
20	VeeT	Transmitter Ground	1	Note 5

Fiber Optic Transceiver, SFP+, BiDi, 10G DDM, Arista Compatible from L-com has same day shipment for domestic and International orders. Our portfolio includes coaxial cable assemblies, connectors, adapters and custom products as well as lightning and surge protectors, NEMA rated enclosures, and an RF product line which includes antennas, amplifiers, passive, and active components.

The information contained within this document is accurate to the best of our knowledge and representative of the part described herein. It may be necessary to make modifications to the part and/or the documentation of the part in order to implement improvements. L-com reserves the right to make such changes as required. Unless otherwise stated, all specifications are nominal. L-com does not make any representation or warranty regarding the suitability of the part described herein for any particular purpose, and L-com does not assume liability arising out of the use of any part or document.

L-com CAD Drawing



**NOTES:**

- THE ITEM NUMBER "FXC-SPB-WWXX-RR-PPP" IS CODED FOR SFP+ BiDi TRANSCEIVERS; "WW" REFERS TO THE BiDi WAVELENGTH; "XX" REFERS TO THE DISTANCE RANGE OF THE BiDi TRANSCEIVER; "RR" REFERS TO THE OPERATION DATA RATE; "PPP" DENOTES THE OEM COMPATIBLE PLATFORM.
- ITEM SHALL BE INDIVIDUALLY PACKAGED IN ACCORDANCE WITH L-COM SPECIFICATION PS-0031.

THESE COMMODITIES, TECHNOLOGY OR SOFTWARE WERE EXPORTED FROM THE UNITED STATES IN ACCORDANCE WITH THE EXPORT ADMINISTRATION REGULATIONS. DIVERSION CONTRARY TO U.S. LAW PROHIBITED.

T-Rev.D