

Fiber Transmitter 1550nm Directly Modulated, AC Power,
1 SC/APC connector 1.2GHz AGC, 10 mW



FOTX55DMAC1SC-10

Features

- Direct Modulated Transmitter
- 1550nm 1.2GHz band
- Supports 6-10dBm optical power
- Wide AGC
- AC Power
- 1RU rack mount
- Two inputs with 50dB isolation for high quality RF insertion

Applications

- CATV HFC network
- Analog transmission video
- HDTV digital television
- Long distance video tranport (up to 100km)

Description

The L-com FOTX55DMAC1SC-10 series is a 1550nm Fiber Transmitter 1550nm Directly Modulated, AC Power, 1 SC/APC connector 1.2GHz AGC with 10 dBm optical power. The FOTX55DMAC1SC-10 is a high quality, low cost, optical broadcast transmitter used to send RF analog and digital content over long distant optical trunk and HFC networks. The FOTX55DMAC1SC-10 1RU rack mount transmitter supports a 78 NTSC channel loading and 44 DOCSIS3/HDTV digital channels in a single low-cost package. The FOTX55DMAC1SC-10 optical power. This high quality, low cost, optical broadcast transmitter is used to send RF analog and digital content over long distant optical trunk and HFC networks. This 1RU rack mount transmitter supports a 78 NTSC channel loading and 44 DOCSIS3/HDTV digital channels in a single low-cost package. The DXT transmitter supports 8-14dBm optical power, a wide AGC range, 47 to 1000 MHz frequency response and SMNP remote management to allow it to be deployed in a wide variety of network topologies carrying both analog and digital content. The FOTX55DMAC1SC-10 is one of thousands of fiber optic connectivity products available from L-com, in-stock and ready to ship. Contact our knowledgeable technical support and sales staff for your answers on fiber optic connectivity or other L-com products.

Configuration

| | |
|-----------------|-------------------------------------|
| Modulation Mode | Direct optical intensity modulation |
| Laser Type | Butterfly-typed DFB laser |

Filter Specifications

| Description | Minimum | Typical | Maximum | Units |
|-------------------------------|---------|---------|---------|-------|
| Optical Wavelength | | 1,550 | | nm |
| Optical Output Power | 10 | | 10 | dBm |
| External Optical Signal Input | -5 | | 10 | dBm |
| CSO | | 55 | | dBm |
| CTB | | 63 | | dBm |
| RF Frequency Range | 47 | | 1,218 | MHz |
| RF Input Level | | 77 | | dBuV |
| RF Input Level Variation | | 5 | | dBuV |
| Flatness | | 0.75 | | dB |
| Input Return Loss | | 16 | | dB |
| RF AGC Control Range | | 5 | | dB |
| RF MGC | 0 | | 20 | dB |

Click the following link (or enter part number in "SEARCH" on website) to obtain additional part information including price, inventory and certifications:
[Fiber Transmitter 1550nm Directly Modulated, AC Power, 1 SC/APC connector 1.2GHz AGC, 10 mW FOTX55DMAC1SC-10](#)

Fiber Transmitter 1550nm Directly Modulated, AC Power,
1 SC/APC connector 1.2GHz AGC, 10 mW



FOTX55DMAC1SC-10

| | | |
|---------------------------------------|-----|-------|
| RF Input Isolation | 50 | dB |
| RF Test Port | -20 | dB |
| RF Test Port Variation | 1 | dB |
| Laser Drive Level Test Port | -20 | dB |
| Laser Drive Level Test Port Variation | 1 | dB |
| Power Consumption | 10 | Watts |

Dimensions

Optical Connector FC/APC or SC/APC

Environmental Specifications

Temperature

Operating Range -5 to +55 deg C
Storage Range -30 to +70 deg C

Compliance Certifications (see [product page](#) for current document)

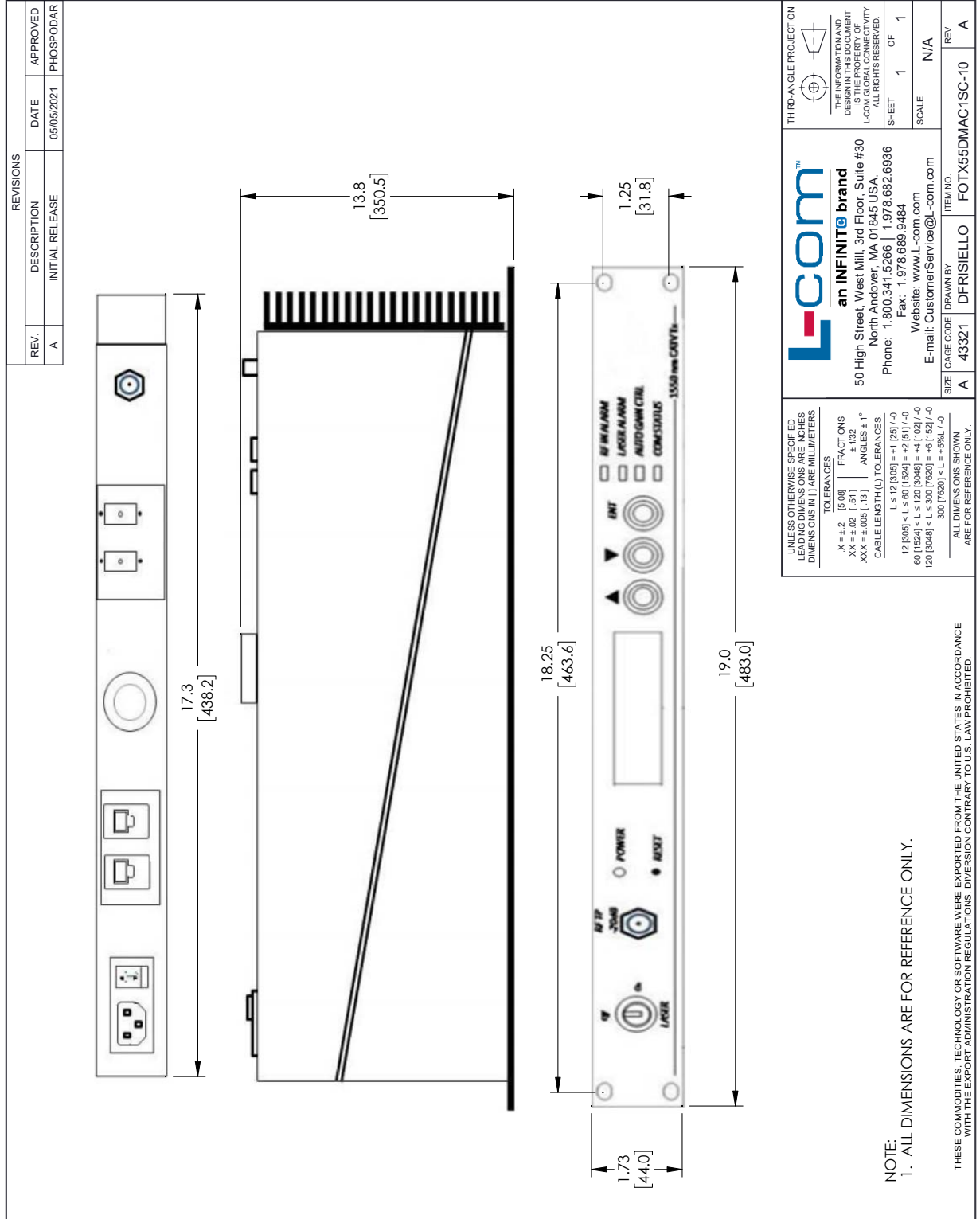
Plotted and Other Data

Notes:

Fiber Transmitter 1550nm Directly Modulated, AC Power, 1 SC/APC connector 1.2GHz AGC, 10 mW from L-com has same day shipment for domestic and International orders. Our portfolio includes coaxial cable assemblies, connectors, adapters and custom products as well as lightning and surge protectors, NEMA rated enclosures, and an RF product line which includes antennas, amplifiers, passive, and active components.

The information contained within this document is accurate to the best of our knowledge and representative of the part described herein. It may be necessary to make modifications to the part and/or the documentation of the part in order to impliment improvements. L-com reserves the right to make such changes as required. Unless otherwise stated, all specifications are nominal. L-com does not make any representation or warranty regarding the suitability of the part described herein for any particular purpose, and L-com does not assume liability arising out of the use of any part or document.

L-com CAD Drawing



L-com™
an INFINITE brand
 50 High Street, West Mill, 3rd Floor, Suite #30
 North Andover, MA 01845, USA
 Phone: 1.800.341.5266 | 1.978.682.6936
 Fax: 1.978.689.9484
 Website: www.L-com.com
 E-mail: CustomerService@L-com.com

UNLESS OTHERWISE SPECIFIED
 LEADING DIMENSIONS ARE INCHES
 DIMENSIONS IN [] ARE MILLIMETERS

TOLERANCES:
 .X = ±.2 [5.08] FRACTIONS
 .XX = ±.02 [1.51] ±.132
 .XXX = ±.005 [1.27] ANGLES ± 1°

CABLE LENGTH (L) TOLERANCES:
 L ≤ 12 [305] = ±.1 [25] / -0
 12 [305] < L ≤ 60 [1524] = ±.2 [51] / -0
 60 [1524] < L ≤ 120 [3048] = ±.4 [102] / -0
 120 [3048] < L ≤ 300 [7620] = ±.6 [152] / -0
 300 [7620] < L = ±.5% L / -0

ALL DIMENSIONS SHOWN
 ARE FOR REFERENCE ONLY.

THIRD-ANGLE PROJECTION

THE INFORMATION AND DESIGN CONTAINED HEREIN IS THE PROPERTY OF L-COM GLOBAL CONNECTIVITY. ALL RIGHTS RESERVED.

SHEET 1 OF 1
 SCALE N/A

SIZE [CAGE CODE] DRAWN BY ITEM NO.
 A 43321 DFRISIELLO FOTX55DMAC1SC-10 REV A