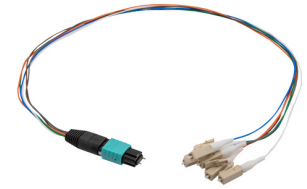


## Fiber Optic Patch Assembly Multimode OM2, 6 Fiber MPO (male) to LC/PC 0.9mm PVC - 0.5M



### FCA-MMS206590P

#### Features

- 6 Fiber Direct MPO Male (w/ pins) to 6x LC/PC Fan-Out Patchcord
- 0.9mm PVC
- Multimode OM2 cabling for aggregation of links, cassettes or patch panels
- Fully compatible with US Conec MTP™ products

#### Applications

- Voice/Video/Data
- LAN
- Server Farms
- Data Centers

#### Description

L-com's FCA-MMS206590P is a fiber optic patch cable assembly that is suitable for Ethernet, LAN, data centers, server farms, and voice/video/data applications. This fiber optic cable is equipped with a 6 fiber MPO (w/pins) to LC/PC connector configuration. This fiber optic cable assembly is available in a length of 0.5 meter and has a cable diameter of 0.9 mm. Our patch cable assembly can operate at temperatures ranging from -10 to 60 degrees C.

This MPO (w/pins) male to LC/PC cable comes with a multimode OM2 fiber and has a fiber diameter of 50/125  $\mu\text{m}$ . The FCA-MMS206590P fiber optic patch cable from L-com features a PVC jacket. Our fiber optic cable assembly can be customized in different lengths to fit specific installation needs, ensuring efficient network management in high-density setups without compromising delivery time or quality. Additional dimensions, specifications, and CAD drawings for this cable can be found on its downloadable PDF datasheet.

L-com has one of the largest in-stock selections of fiber optic patch cables for international and domestic orders. Make your online purchase right now to take advantage of our same-business-day shipping. We are committed to delivering excellent service to support our customers in maintaining the continuity and reliability of their networks. For further information on similar products, our expert technical support and knowledgeable sales team can help you get the ideal multimode OM2 fiber optic cable for your requirements.

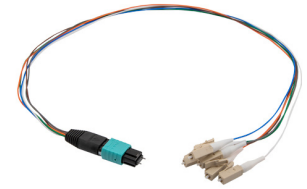
#### Configuration

Function	Patch
Cable Type	Base-6 Multimode
Mode	Multimode
Mode Class	OM2
Fiber Diameter	50/125 $\mu\text{m}$
Connection 1 Type	MPO (w/ pins)
Connection 1 Gender	Male
Connection 1 Polish	PC
Connection 2 Type	LC
Connection 2 Polish	PC

#### Optical Specifications

Description	Minimum	Typical	Maximum	Units
Return Loss - MPO	30			dB
Insertion Loss - MPO			0.5	dB
Return Loss - LC, ST, SC, FC	30			dB

Fiber Optic Patch Assembly Multimode OM2, 6 Fiber  
MPO (male) to LC/PC 0.9mm PVC - 0.5M



**FCA-MMS206590P**

**Optical Specifications**

Description	Minimum	Typical	Maximum	Units
Insertion Loss - LC, ST, SC, FC			0.3	dB

**Mechanical Specifications**

**Cable Assembly**

Length	0.5 m [19.68 in]
Width/Diameter	0.9 mm
Weight	13.61 g [0.03 lbs]

**Cable**

Cable Type	Patch
Polarity	NEUTRAL
Static Bend Radius	9 mm
Dynamic Bend Radius	18 mm
Max Allowance Tensile, Short Term (N/100mm)	170 mm
Max Allowance Tensile, Long Term (N/100mm)	85 mm

**Connectors**

Description	Connector 1	Connector 2
Type	MPO (w/ pins) Male	LC
Mating Cycles	500	500
Connector Polish	PC	PC

**Environmental Specifications**

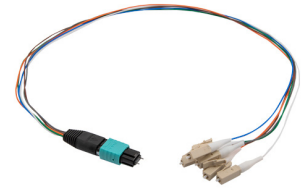
Operating Range Temperature	-10 to +60 deg C
Storage Range Temperature	-5 to +50 deg C

**Compliance Certifications** (see [product page](#) for current document)

**Plotted and Other Data**

Notes:

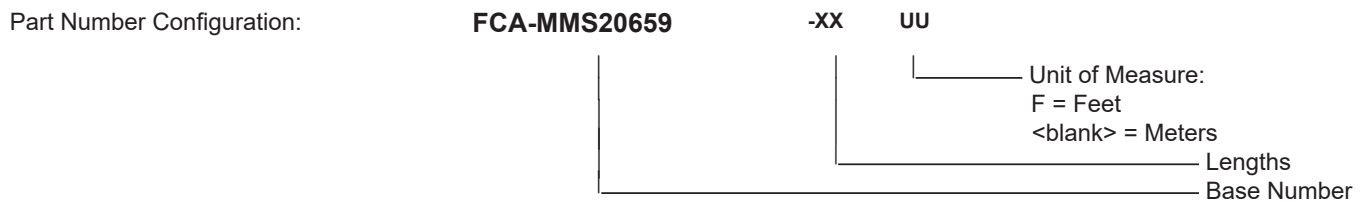
Fiber Optic Patch Assembly Multimode OM2, 6 Fiber MPO (male) to LC/PC 0.9mm PVC - 0.5M



**FCA-MMS206590P**

**Typical Performance Data**

**How to Order**



Example:    FCA-MMS20659-12 = 12 meters long cable  
              FCA-MMS20659-10F = 10 feet long cable

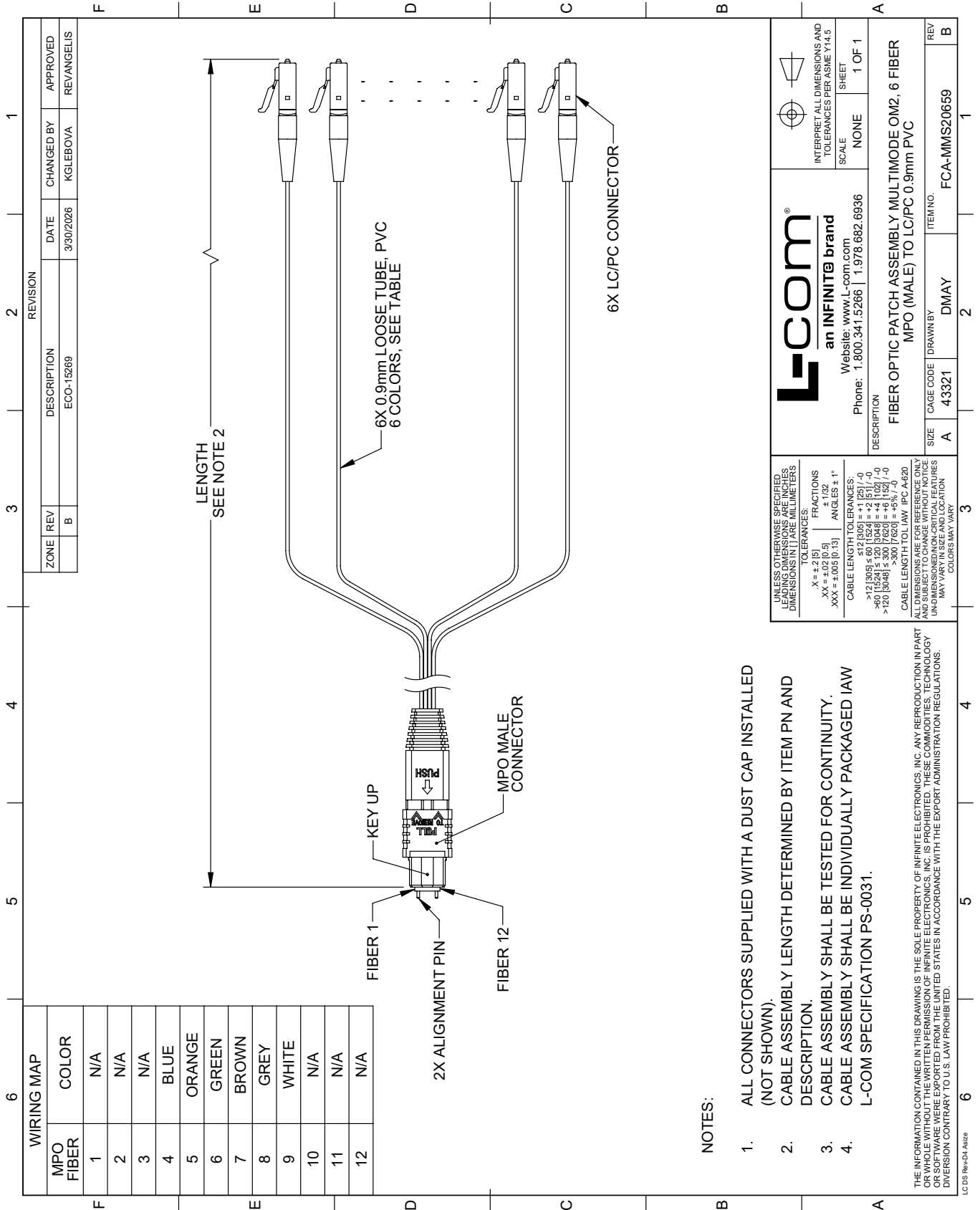
Fiber Optic Patch Assembly Multimode OM2, 6 Fiber MPO (male) to LC/PC 0.9mm PVC - 0.5M from L-com has same day shipment for domestic and International orders. Our portfolio includes coaxial cable assemblies, connectors, adapters and custom products as well as lightning and surge protectors, NEMA rated enclosures, and an RF product line which includes antennas, amplifiers, passive, and active components.

URL: <https://www.l-com.com/patch-cord-multimode-om2-6-cores-mpo-male-lc-upc-0.9mm-pvc-6-color-0.5m-fca-mms206590p>

The information contained within this document is accurate to the best of our knowledge and representative of the part described herein. It may be necessary to make modifications to the part and/or the documentation of the part in order to impliment improvements. L-com reserves the right to make such changes as required. Unless otherwise stated, all specifications are nominal. L-com does not make any representation or warranty regarding the suitability of the part described herein for any particular purpose, and L-com does not assume liability arising out of the use of any part or document.

# FCA-MMS206590P CAD Drawing

Fiber Optic Patch Assembly Multimode OM2, 6 Fiber MPO (male) to LC/PC 0.9mm PVC - 0.5M



**NOTES:**

1. ALL CONNECTORS SUPPLIED WITH A DUST CAP INSTALLED (NOT SHOWN).
2. CABLE ASSEMBLY LENGTH DETERMINED BY ITEM PN AND DESCRIPTION.
3. CABLE ASSEMBLY SHALL BE TESTED FOR CONTINUITY.
4. CABLE ASSEMBLY SHALL BE INDIVIDUALLY PACKAGED IAW L-COM SPECIFICATION PS-0031.

THE INFORMATION CONTAINED IN THIS DRAWING IS THE SOLE PROPERTY OF INFINITE ELECTRONICS, INC. ANY REPRODUCTION IN PART OR WHOLE WITHOUT THE WRITTEN PERMISSION OF INFINITE ELECTRONICS, INC. IS PROHIBITED. THESE COMMODITIES, TECHNOLOGY OR SOFTWARE WERE EXPORTED FROM THE UNITED STATES IN ACCORDANCE WITH THE EXPORT ADMINISTRATION REGULATIONS. DIVERSION CONTRARY TO U.S. LAW PROHIBITED.

<p>UNLESS OTHERWISE SPECIFIED, LEADING DIMENSIONS ARE IN INCHES. DIMENSIONS IN [ ] ARE IN MILLIMETERS.</p> <p>TOLERANCES:</p> <p>.X = ±.2 [5]      FRACTIONS      ± 1/32          .XX = ±.02 [0.5]      ANGLES ± 1°          .XXX = ±.005 [0.13]</p> <p>CABLE LENGTH TOLERANCES:</p> <p>&lt; 10 [254]      ±.02 [0.508]          &lt; 80 [2032]      ±.03 [0.762]      ±.04 [1.016]          &lt; 120 [3048]      ±.04 [1.016]      ±.05 [1.27]          &gt; 300 [7620]      ±.05 [1.27]</p> <p>CABLE LENGTH TOL. IAW IPC A-620</p> <p>ALL DIMENSIONS ARE FOR REFERENCE ONLY. DIMENSIONS ON NON-CRITICAL FEATURES MAY VARY IN SIZE AND LOCATION. COLORS MAY VARY.</p>		<p>INFINITE ELECTRONICS, INC.</p> <p>an INFINITE brand</p> <p>Website: www.L-com.com</p> <p>Phone: 1.800.341.5266   1.978.682.6936</p>	<p>INTERPRET ALL DIMENSIONS AND TOLERANCES PER ASME Y14.5</p> <p>SCALE: NONE</p> <p>SHEET: 1 OF 1</p>
<p>DESCRIPTION: FIBER OPTIC PATCH ASSEMBLY MULTIMODE OM2, 6 FIBER MPO (MALE) TO LC/PC 0.9mm PVC</p>		<p>REV B</p>	
<p>SIZE: A</p>	<p>CAGE CODE: 43321</p>	<p>ITEM NO.: FCA-MMS20659</p>	
<p>DRAWN BY: DMAY</p>	<p>REV B</p>	<p>REV B</p>	