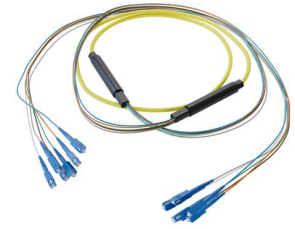


## 6-Fiber SC UPC to SC UPC, OS2 Single Mode Distribution Cable, 5.0mm Plenum, 2.0mm breakout, Yellow-30M



### FCA-6S2SCUSCUPK2-30

#### Features

- 6X LC UPC to 6X SC UPC
- Indoor single mode G.657.A1 OS2
- Low Smoke Zero Halogen (LSZH) rated cable
- 5.0mm with tight buffer and aramid yarn strength member
- 2mm TIA 598 color coded, .5M breakout
- Suitable for confined installations where flame resistance is required

#### Applications

- Data centers
- Passive Optical Networks (PON)
- Local Area Networks (LAN)
- Enterprise Networking
- Storage and cloud based services
- AI data storage and communications
- Headend termination to a fiber backbone
- Terminations of data center fiber rack system

#### Description

L-com's FCA-6S2SCUSCUPK2-30 fiber optic distribution cable is engineered to provide reliable single mode fiber connectivity for indoor network environments. This cable assembly features a 6-fiber SC UPC to SC UPC configuration, using OS2 single mode fiber with a 9/125 μm core size. Designed with a breakout structure, it ensures organized fiber distribution, making it an ideal choice for data centers, enterprise networking, and LAN applications where multi-fiber routing and consistent signal performance are critical. The 6-fiber single mode breakout cable comes with a 5.0 mm overall diameter yellow PVC plenum (OFNP)- rated jacket, meeting indoor fire safety standards. Each breakout fiber measures 2.0 mm and follows TIA-598 color coding for easy identification and termination, with a 0.5 m breakout length.

This fiber optic distribution cable is constructed with tight-buffered fiber and reinforced with aramid yarn, providing excellent mechanical durability. The cable also features controlled bend radii, with a one-time bend radius of 1.476 inches and a repeated bend radius of 2.953 inches, ensuring optimal optical performance during installation and routing. The cable offers crush resistance values of 1000 N/100 mm (short-term) and 300 N/100 mm (long-term), making it highly suitable for robust indoor deployments.

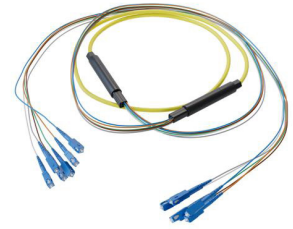
The FCA-6S2SCUSCUPK2-30 30-meter OS2 fiber optic assembly uses SC UPC to SC UPC connectors, which ensure low insertion loss and stable return loss performance. The maximum insertion loss is 0.3 dB, with a minimum return loss of 50 dB. This OS2 single mode fiber assembly is perfect for applications such as data centers, Passive Optical Networks (PON), Local Area Networks (LAN), enterprise networking, storage and cloud based services, AI data storage and communications, headend termination to a fiber backbone, and terminations of data center fiber rack systems. Designed for indoor single mode G.657.A1 OS2 applications, this plenum (OFNP) rated cable is suitable for wall, ceiling, conduits, and between buildings installations. With an operating temperature range of 0 °C to 60 °C and non-rated ingress protection, this cable is built for reliable indoor performance.

L-com offers one of the most extensive in-stock selections of fiber optic distribution cables, with same-day shipping available for both domestic and international orders. Order today to take advantage of same-day shipping, and our expert technical support and knowledgeable sales team are available to help you select the 6-fiber SC UPC to SC UPC OS2 single mode distribution cable that fits your needs.

#### Configuration

Function	Breakout
Cable Type	6-Fiber Single Mode
Mode	Single Mode
Mode Class	OS2
Fiber Diameter	9/125 μm
Connection 1 Type	SC
Connection 1 Polish	UPC
Connection 2 Type	SC
Connection 2 Polish	UPC
Cable Color	Yellow

6-Fiber SC UPC to SC UPC, OS2 Single Mode Distribution Cable, 5.0mm Plenum, 2.0mm breakout, Yellow-30M



**FCA-6S2SCUSCUPK2-30**

**Optical Specifications**

Description	Minimum	Typical	Maximum	Units
Return Loss - LC, ST, SC, FC	50			dB
Insertion Loss - LC, ST, SC, FC			0.3	dB

**Mechanical Specifications**

**Cable Assembly**

Length	30 m [1181.10 in]
Width/Diameter	5 mm
Weight	205.02 g [0.452 lbs]

**Cable**

Cable Type	Breakout
Static Bend Radius	37 mm
Dynamic Bend Radius	75 mm
Max Crush Resistance, Short Term (N/100mm)	1,000
Max Crush Resistance, Long Term (N/100mm)	300

**Connectors**

Description	Connector 1	Connector 2
Type	SC	SC
Connector Polish	UPC	UPC

**Environmental Specifications**

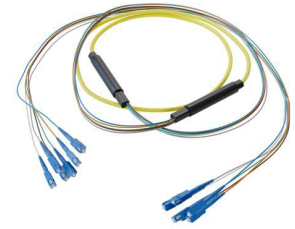
Operating Range Temperature	0 to +60 deg C
Storage Range Temperature	-20 to +60 deg C
Ingress Protection (IP) Rating	Non-Rated

**Compliance Certifications** (see [product page](#) for current document)

**Plotted and Other Data**

Notes:

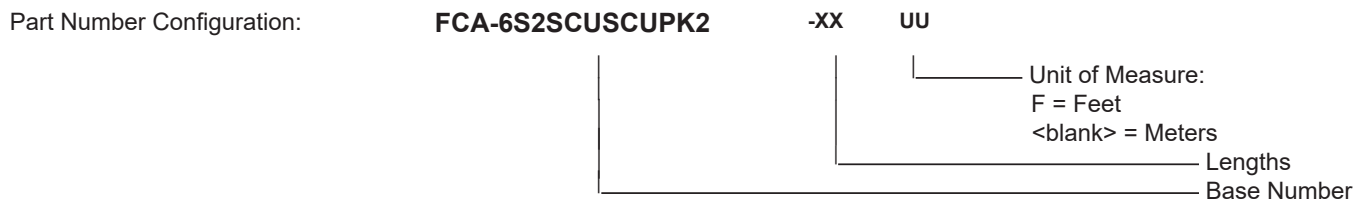
6-Fiber SC UPC to SC UPC, OS2 Single Mode Distribution Cable, 5.0mm Plenum, 2.0mm breakout, Yellow-30M



## FCA-6S2SCUSCUPK2-30

### Typical Performance Data

### How to Order



Example: FCA-6S2SCUSCUPK2-12 = 12 meters long cable  
FCA-6S2SCUSCUPK2-10F = 10 feet long cable

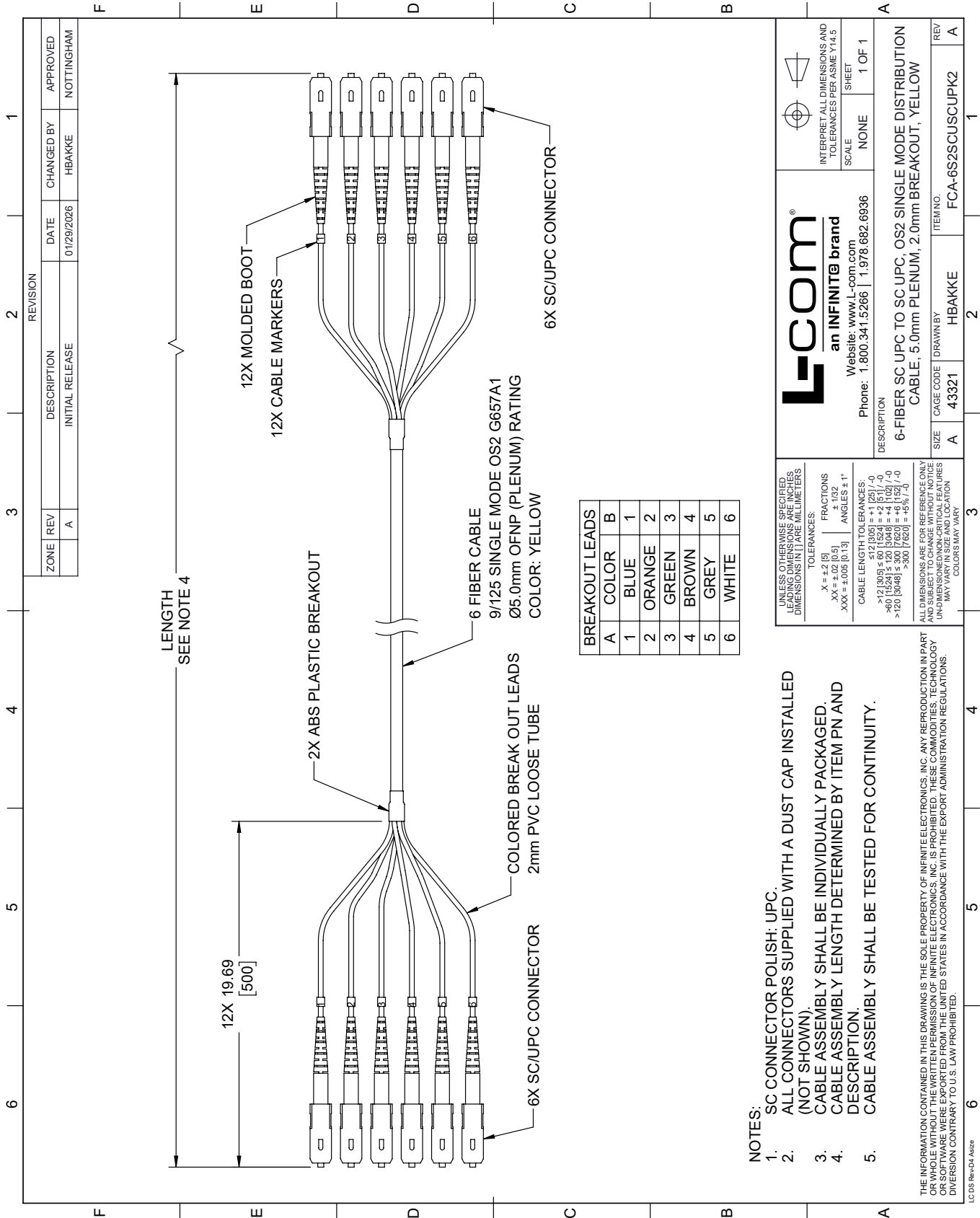
6-Fiber SC UPC to SC UPC, OS2 Single Mode Distribution Cable, 5.0mm Plenum, 2.0mm breakout, Yellow-30M from L-com has same day shipment for domestic and International orders. Our portfolio includes coaxial cable assemblies, connectors, adapters and custom products as well as lightning and surge protectors, NEMA rated enclosures, and an RF product line which includes antennas, amplifiers, passive, and active components.

URL: <https://www.l-com.com/6-fiber-sc-upc-sc-upc-os2-single-mode-distribution-cable-5.0mm-plenum-2.0mm-breakout-yellow-30m-fca-6s2scuscupk2-30>

The information contained within this document is accurate to the best of our knowledge and representative of the part described herein. It may be necessary to make modifications to the part and/or the documentation of the part in order to impliment improvements. L-com reserves the right to make such changes as required. Unless otherwise stated, all specifications are nominal. L-com does not make any representation or warranty regarding the suitability of the part described herein for any particular purpose, and L-com does not assume liability arising out of the use of any part or document.

# FCA-6S2SCUSCUPK2-30 CAD Drawing

6-Fiber SC UPC to SC UPC, OS2 Single Mode Distribution Cable, 5.0mm Plenum, 2.0mm breakout, Yellow-30M



ZONE	REV	DESCRIPTION	DATE	CHANGED BY	APPROVED
A		INITIAL RELEASE	01/29/2026	HBAKKE	NOTTINGHAM

BREAKOUT LEADS	
A	B
1	BLUE
2	ORANGE
3	GREEN
4	BROWN
5	GREY
6	WHITE

- NOTES:
- SC CONNECTOR POLISH: UPC.
  - ALL CONNECTORS SUPPLIED WITH A DUST CAP INSTALLED (NOT SHOWN).
  - CABLE ASSEMBLY SHALL BE INDIVIDUALLY PACKAGED.
  - CABLE ASSEMBLY LENGTH DETERMINED BY ITEM PN AND DESCRIPTION.
  - CABLE ASSEMBLY SHALL BE TESTED FOR CONTINUITY.

THE INFORMATION CONTAINED IN THIS DRAWING IS THE SOLE PROPERTY OF INFINITE ELECTRONICS, INC. ANY REPRODUCTION IN PART OR WHOLE WITHOUT THE WRITTEN PERMISSION OF INFINITE ELECTRONICS, INC. IS PROHIBITED. THESE COMMODITIES, TECHNOLOGY OR SOFTWARE WERE EXPORTED FROM THE UNITED STATES IN ACCORDANCE WITH THE EXPORT ADMINISTRATION REGULATIONS. DIVERSION CONTRARY TO U.S. LAW PROHIBITED.

UNLESS OTHERWISE SPECIFIED, LEADING DIMENSIONS ARE IN INCHES. DIMENSIONS IN [ ] ARE MILLIMETERS.

TOLERANCES:  
 .X = ±.2 [5]  
 .XX = ±.02 [0.5]  
 .XXX = ±.005 [0.13]  
 FRACTIONS ± 1/32  
 ANGLES ± 1°

CABLE LENGTH TOLERANCES:  
 >12 [305] ≤ 60 [1524] = ±1 [25] / -0  
 >60 [1524] ≤ 120 [3048] = ±4 [102] / -0  
 >120 [3048] ≤ 300 [7620] = ±1 [25] / -0  
 >300 [7620] = ±5 [127] / -0

ALL DIMENSIONS ARE FOR REFERENCE ONLY. DIMENSIONS OF CRITICAL FEATURES MAY VARY IN SIZE AND LOCATION. COLORS MAY VARY.

**L-com**  
 an INFINITE brand  
 Website: www.L-com.com  
 Phone: 1.800.341.5266 | 1.978.682.6936

INTERPRET ALL DIMENSIONS AND TOLERANCES PER ASME Y14.5  
 SCALE NONE  
 SHEET 1 OF 1

DESCRIPTION  
 6-FIBER SC UPC TO SC UPC, OS2 SINGLE MODE DISTRIBUTION CABLE, 5.0mm PLENUM, 2.0mm BREAKOUT, YELLOW

REV	DATE	BY	DESCRIPTION
A		HBAKKE	FCA-6S2SCUSCUPK2