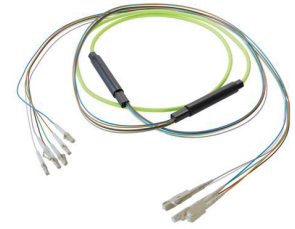


6-Fiber LC UPC to SC UPC, OM5 Multimode Distribution Cable, 5.0mm Plenum, 2.0mm breakout, Lime Green-10M



FCA-6M5LCUSCUPK2-10

Features

- 6X LC UPC to 6X SC UPC
- Indoor multimode OM5
- Plenum (OFNP) rated cable
- 5.0mm with tight buffer and aramid yarn strength member
- 2mm TIA 598 color coded, .5M breakout
- Suitable for wall, ceiling, conduits, and between buildings

Applications

- Data centers
- Passive Optical Networks (PON)
- Local Area Networks (LAN)
- Enterprise Networking
- Storage and cloud based services
- AI data storage and communications
- Headend termination to a fiber backbone
- Terminations of data center fiber rack system

Description

L-com's FCA-6M5LCUSCUPK2-10 fiber optic distribution cable is designed to support dependable multimode fiber connectivity in indoor network environments. This cable assembly features a 6-fiber LC UPC to SC UPC configuration using OM5 multimode fiber with a 50/125 μ m core size. Our fiber optic cable has a breakout design that supports organized fiber distribution and is commonly used in data centers, enterprise networks, and LAN applications where multi-fiber routing and signal consistency are required. This 6-fiber multimode breakout cable is constructed with a 5.0 mm overall diameter lime green plenum (OFNP)-rated PVC jacket to meet indoor fire safety requirements. Each breakout fiber measures 2.0 mm and follows TIA-598 color coding for simplified identification and termination, with a 0.5 m breakout length.

Our fiber optic distribution cable features tight-buffered fiber construction with aramid yarn that provides mechanical durability, while controlled one-time and repeated bend radius values of 1.476 in and 2.953 in respectively help maintain optical performance during installation and routing. The cable also offers short-term and long-term crush resistance values of 1000 N/100 mm and 300 N/100 mm to support robust indoor deployment. The FCA-6M5LCUSCUPK2-10 OM5 fiber optic cable assembly uses LC UPC to SC UPC connectors to support low insertion loss and stable return loss performance, with a maximum insertion loss of 0.30 dB and a minimum return loss of 30 dB.

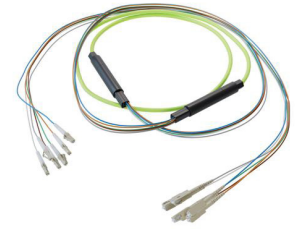
This 10 m OM5 multimode fiber assembly has a bandwidth of 28000 MHz·km and provides high-speed, high-density connectivity for 400 Gb Ethernet applications. Typical deployment environments include data centers, enterprise networks, LAN systems, Passive Optical Networks (PON), storage and cloud-based services, AI data storage and communications, headend termination to a fiber backbone, and terminations of data center fiber rack systems. This cable operates from 0°C to 60°C and is designed for indoor wall, ceiling, conduit, and rack-to-rack installations, with no ingress protection rating.

L-com offers one of the largest in-stock selections of multimode distribution cables, with same-day shipment available for domestic and international orders. Make your online purchase today to take advantage of our same-day shipping. Our expert technical support and knowledgeable sales team are ready to assist you in selecting the 6-fiber LC UPC to SC UPC OM5 multimode distribution cable that meets your needs.

Configuration

| | |
|---------------------|------------------|
| Function | Breakout |
| Cable Type | Base-6 Multimode |
| Mode | Multimode |
| Mode Class | OM5 |
| Fiber Diameter | 50/125 μ m |
| Connection 1 Type | LC |
| Connection 1 Polish | UPC |
| Connection 2 Type | SC |
| Connection 2 Polish | UPC |
| Cable Color | Lime Green |

6-Fiber LC UPC to SC UPC, OM5 Multimode Distribution Cable, 5.0mm Plenum, 2.0mm breakout, Lime Green-10M



FCA-6M5LCUSCUPK2-10

Optical Specifications

| Description | Minimum | Typical | Maximum | Units |
|---------------------------------|---------|---------|---------|-------|
| Return Loss - LC, ST, SC, FC | 30 | | | dB |
| Insertion Loss - LC, ST, SC, FC | | | 0.3 | dB |

Mechanical Specifications

Cable Assembly

| | |
|----------------|----------------------|
| Length | 10 m [393.70 in] |
| Width/Diameter | 5 mm |
| Weight | 106.14 g [0.234 lbs] |

Cable

| | |
|--|----------|
| Cable Type | Breakout |
| Static Bend Radius | 37 mm |
| Dynamic Bend Radius | 75 mm |
| Max Crush Resistance, Short Term (N/100mm) | 1,000 |
| Max Crush Resistance, Long Term (N/100mm) | 300 |

Connectors

| Description | Connector 1 | Connector 2 |
|------------------|-------------|-------------|
| Type | LC | SC |
| Connector Polish | UPC | UPC |

Environmental Specifications

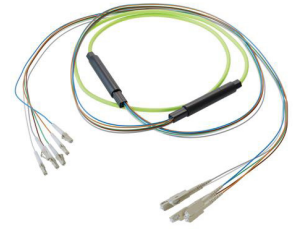
| | |
|--------------------------------|------------------|
| Operating Range Temperature | 0 to +60 deg C |
| Storage Range Temperature | -20 to +60 deg C |
| Ingress Protection (IP) Rating | Non-Rated |

Compliance Certifications (see [product page](#) for current document)

Plotted and Other Data

Notes:

6-Fiber LC UPC to SC UPC, OM5 Multimode Distribution Cable, 5.0mm Plenum, 2.0mm breakout, Lime Green-10M



FCA-6M5LCUSCUPK2-10

Typical Performance Data

How to Order

Part Number Configuration:

FCA-6M5LCUSCUPK2

-XX

UU

Unit of Measure:

F = Feet

<blank> = Meters

Lengths

Base Number

Example: FCA-6M5LCUSCUPK2-12 = 12 meters long cable
FCA-6M5LCUSCUPK2-10F = 10 feet long cable

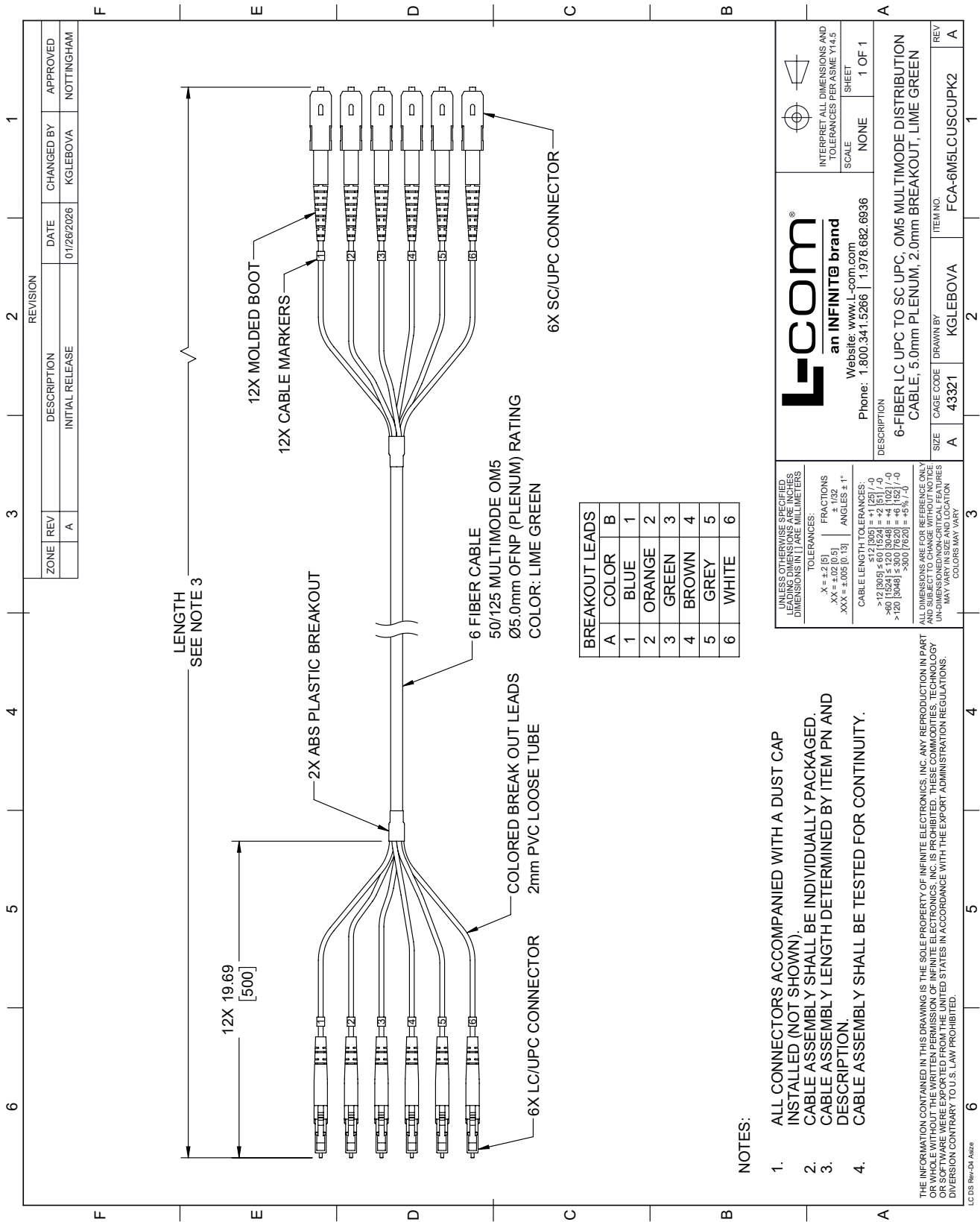
6-Fiber LC UPC to SC UPC, OM5 Multimode Distribution Cable, 5.0mm Plenum, 2.0mm breakout, Lime Green-10M from L-com has same day shipment for domestic and International orders. Our portfolio includes coaxial cable assemblies, connectors, adapters and custom products as well as lightning and surge protectors, NEMA rated enclosures, and an RF product line which includes antennas, amplifiers, passive, and active components.

URL: <https://www.l-com.com/6-fiber-lc-upc-sc-upc-om5-multimode-distribution-cable-5.0mm-plenum-2.0mm-breakout-lime-green-10m-fca-6m5lcuscupk2-10-p.aspx>

The information contained within this document is accurate to the best of our knowledge and representative of the part described herein. It may be necessary to make modifications to the part and/or the documentation of the part in order to impliment improvements. L-com reserves the right to make such changes as required. Unless otherwise stated, all specifications are nominal. L-com does not make any representation or warranty regarding the suitability of the part described herein for any particular purpose, and L-com does not assume liability arising out of the use of any part or document.

FCA-6M5LCUSCUPK2-10 CAD Drawing

6-Fiber LC UPC to SC UPC, OM5 Multimode Distribution Cable, 5.0mm Plenum, 2.0mm breakout, Lime Green-10M



| REVISION | | DATE | CHANGED BY | APPROVED |
|----------|-----|-------------|-----------------|---------------------|
| ZONE | REV | DESCRIPTION | INITIAL RELEASE | |
| | A | | 01/26/2026 | KGLEBOVA NOTTINGHAM |

L-com
an INFINITE brand
Website: www.l-com.com
Phone: 1.800.341.5266 | 1.978.682.6936

INTERPRET ALL DIMENSIONS AND TOLERANCES PER ASME Y14.5
SCALE NONE SHEET 1 OF 1

UNLESS OTHERWISE SPECIFIED, LEAD DIMENSIONS IN INCHES AND DIMENSIONS IN J ARE MILLIMETERS.
TOLERANCES:
.X = ±.2 (5) FRACTIONS ±.1 (2)
.XX = ±.02 (0.5) ANGLES ± 1°
.XXX = ±.005 (0.13)
CABLE LENGTH TOLERANCES:
>12 (305) ≤ 60 (1524) = ±.125 (-0)
>60 (1524) ≤ 100 (2540) = ±.151 (-0)
>100 (2540) ≤ 300 (7620) = ±.152 (-0)
>300 (7620) = ±.5% (-0)

DESCRIPTION
6-FIBER LC UPC TO SC UPC, OM5 MULTIMODE DISTRIBUTION CABLE; 5.0mm PLENUM; 2.0mm BREAKOUT, LIME GREEN

ITEM NO. FCA-6M5LCUSCUPK2

ALL DIMENSIONS ARE FOR REFERENCE ONLY AND SUBJECT TO CHANGE WITHOUT NOTICE UNLESS INDICATED OTHERWISE. CRITICAL FEATURES MAY VARY. COLORS MAY VARY.

| BREAKOUT LEADS | A | COLOR | B |
|----------------|--------|-------|---|
| 1 | BLUE | 1 | |
| 2 | ORANGE | 2 | |
| 3 | GREEN | 3 | |
| 4 | BROWN | 4 | |
| 5 | GREY | 5 | |
| 6 | WHITE | 6 | |

NOTES:

1. ALL CONNECTORS ACCOMPANIED WITH A DUST CAP INSTALLED (NOT SHOWN).
2. CABLE ASSEMBLY SHALL BE INDIVIDUALLY PACKAGED.
3. CABLE ASSEMBLY LENGTH DETERMINED BY ITEM PN AND DESCRIPTION.
4. CABLE ASSEMBLY SHALL BE TESTED FOR CONTINUITY.

THE INFORMATION CONTAINED IN THIS DRAWING IS THE SOLE PROPERTY OF INFINITE ELECTRONICS, INC. ANY REPRODUCTION IN PART OR WHOLE WITHOUT THE WRITTEN PERMISSION OF INFINITE ELECTRONICS, INC. IS PROHIBITED. THESE COMMODITIES, TECHNOLOGY OR SOFTWARE WERE EXPORTED FROM THE UNITED STATES IN ACCORDANCE WITH THE EXPORT ADMINISTRATION REGULATIONS. DIVERSION CONTRARY TO U.S. LAW PROHIBITED.

LC DS Rev-04 Add