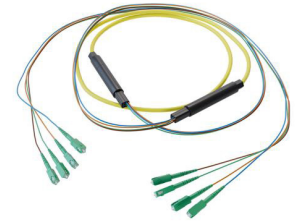


4-Fiber SC APC to SC APC,  
OS2 Single Mode Indoor Distribution Cable,  
4.5mm Plenum, 2.0mm breakout, Yellow-30M



**FCA-4S2SCASCAPK2-30**

**Features**

- 4X SC APC to 4X SC APC
- Indoor single mode OS2
- Plenum (OFNP) rated cable
- 4.5mm with tight buffer and aramid yarn strength member
- 2mm TIA 598 color coded, .5M breakout
- Suitable for wall, ceiling, conduits, and between buildings

**Applications**

- Data centers
- Passive Optical Networks (PON)
- Local Area Networks (LAN)
- Enterprise Networking
- Storage and cloud based services
- AI data storage and communications
- Headend termination to a fiber backbone
- Terminations of data center fiber rack system

**Description**

The L-com FCA-4S2SCASCAPK2-30 is a fiber optic breakout cable assembly that is equipped with 4-fiber SC/APC to SC/APC connectors. This cable assembly has a single mode OS2 fiber that offers ultra-low attenuation over distances up to 10km for 10G Ethernet and beyond with a 9/125µm core size. The yellow fiber optic cable has an OFNP-rated PVC jacket and a length of 30 meters.

Our fiber optic breakout cable is a robust and versatile fiber optic assembly designed for high-performance data transmission in various environments. L-com's FCA-4S2SCASCAPK2-30 breakout cable is built for enterprise backbones, long-haul networking, and high-speed data transmission and delivers exceptional reliability for critical infrastructure deployments. With an operating temperature range of 0 to 60 degrees C, this cable assembly provides reliable performance across diverse conditions.

This fiber optic cable from L-com is suitable for applications such as data centers, passive optical networks (PON), local area networks (LAN), enterprise networking, storage and cloud based services, AI data storage and communications, headend termination to a fiber backbone, and terminations of data center fiber rack system. Our breakout cable comes with a cable diameter of 4.5 mm and has an insertion loss of 0.3 dB. Additional dimensions, specifications, and CAD drawings for this 4-fiber cable assembly can be found on its downloadable PDF datasheet.

L-com has one of the largest in-stock selections of SC/APC to SC/APC fiber optic breakout cords for international and domestic orders. We are committed to delivering excellent service to support our customers in maintaining the continuity and reliability of their networks. For further information on similar products, our expert technical support and knowledgeable sales team can help you get the ideal OS2 single mode fiber optic cable that meets your requirements.

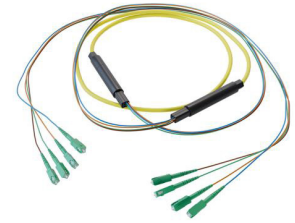
**Configuration**

Function	Breakout
Cable Type	Base-4 Single Mode
Mode	Single Mode
Mode Class	OS2
Fiber Diameter	9/125 µm
Connection 1 Type	SC
Connection 1 Polish	APC
Connection 2 Type	SC
Connection 2 Polish	APC
Cable Color	Yellow

**Optical Specifications**

Description	Minimum	Typical	Maximum	Units
Return Loss - LC, ST, SC, FC	60			dB

4-Fiber SC APC to SC APC,  
OS2 Single Mode Indoor Distribution Cable,  
4.5mm Plenum, 2.0mm breakout, Yellow-30M



## FCA-4S2SCASCAPK2-30

### Optical Specifications

Description	Minimum	Typical	Maximum	Units
Insertion Loss - LC, ST, SC, FC			0.3	dB

### Mechanical Specifications

#### Cable Assembly

Length	30 m [1181.10 in]
Width/Diameter	4.5 mm
Weight	166.92 g [0.368 lbs]

#### Cable

Cable Type	Breakout
Static Bend Radius	34 mm
Dynamic Bend Radius	67 mm
Max Crush Resistance, Short Term (N/100mm)	1,000
Max Crush Resistance, Long Term (N/100mm)	300

### Connectors

Description	Connector 1	Connector 2
Type	SC	SC
Connector Polish	APC	APC

### Environmental Specifications

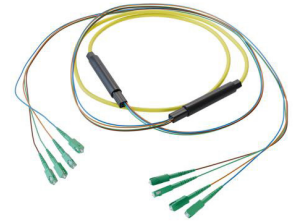
Operating Range Temperature	0 to +60 deg C
Storage Range Temperature	-20 to +60 deg C
Ingress Protection (IP) Rating	Non-Rated

**Compliance Certifications** (see [product page](#) for current document)

### Plotted and Other Data

Notes:

4-Fiber SC APC to SC APC,  
OS2 Single Mode Indoor Distribution Cable,  
4.5mm Plenum, 2.0mm breakout, Yellow-30M



## FCA-4S2SCASCAPK2-30

### Typical Performance Data

### How to Order

Part Number Configuration:

**FCA-4S2SCASCAPK2**

**-XX**

**UU**

Unit of Measure:

F = Feet

<blank> = Meters

Lengths

Base Number

Example: FCA-4S2SCASCAPK2-12 = 12 meters long cable  
FCA-4S2SCASCAPK2-10F = 10 feet long cable

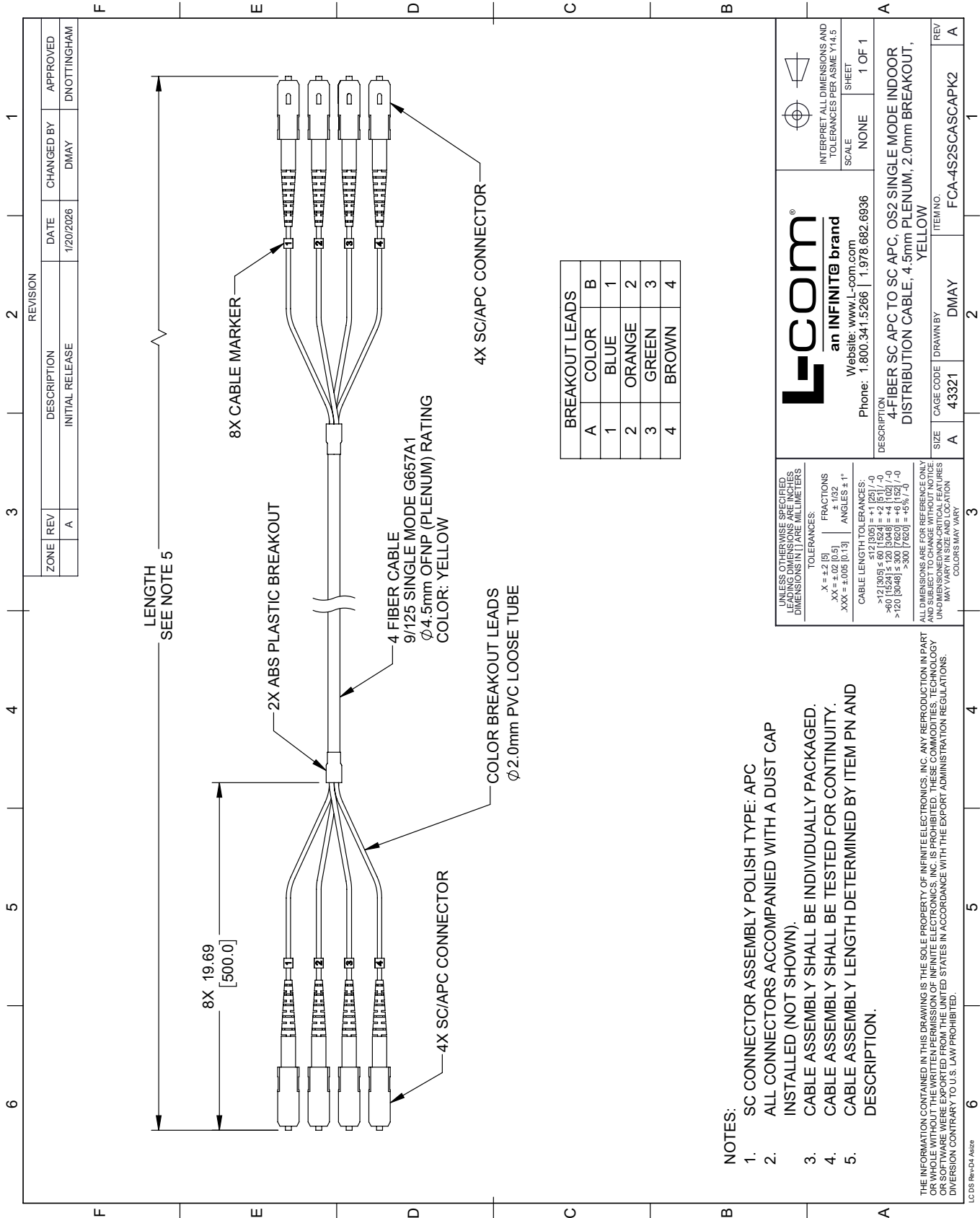
4-Fiber SC APC to SC APC, OS2 Single Mode Indoor Distribution Cable, 4.5mm Plenum, 2.0mm breakout, Yellow-30M from L-com has same day shipment for domestic and International orders. Our portfolio includes coaxial cable assemblies, connectors, adapters and custom products as well as lightning and surge protectors, NEMA rated enclosures, and an RF product line which includes antennas, amplifiers, passive, and active components.

URL: <https://www.l-com.com/4-fiber-sc-apc-sc-apc-os2-single-mode-indoor-distribution-cable-4.5mm-plenum-2.0mm-breakout-yellow-30m-fca-4s2scascapk2-30-p.aspx>

The information contained within this document is accurate to the best of our knowledge and representative of the part described herein. It may be necessary to make modifications to the part and/or the documentation of the part in order to impliment improvements. L-com reserves the right to make such changes as required. Unless otherwise stated, all specifications are nominal. L-com does not make any representation or warranty regarding the suitability of the part described herein for any particular purpose, and L-com does not assume liability arising out of the use of any part or document.

# FCA-4S2SCASCAPK2-30 CAD Drawing

4-Fiber SC APC to SC APC, OS2 Single Mode Indoor Distribution Cable, 4.5mm Plenum, 2.0mm breakout, Yellow-30M



REVISION		DATE	CHANGED BY	APPROVED	
ZONE	REV	DESCRIPTION	DATE	CHANGED BY	APPROVED
	A	INITIAL RELEASE	1/20/2026	DMAY	DNOTTINGHAM

BREAKOUT LEADS	
A	B
1	BLUE
2	ORANGE
3	GREEN
4	BROWN

**L-com**  
an INFINITE brand

Website: [www.L-com.com](http://www.L-com.com)  
Phone: 1.800.341.5266 | 1.978.682.6936

INTERPRET ALL DIMENSIONS AND TOLERANCES PER ASME Y14.5

SCALE: NONE  
SHEET: 1 OF 1

---

DESCRIPTION: 4-FIBER SC APC TO SC APC, OS2 SINGLE MODE INDOOR DISTRIBUTION CABLE; 4.5mm PLENUM; 2.0mm BREAKOUT, YELLOW

SIZE	CAGE CODE	DRAWN BY	ITEM NO.
A	43321	DMAY	FCA-4S2SCASCAPK2

**NOTES:**

- SC CONNECTOR ASSEMBLY POLISH TYPE: APC
- ALL CONNECTORS ACCOMPANIED WITH A DUST CAP INSTALLED (NOT SHOWN).
- CABLE ASSEMBLY SHALL BE INDIVIDUALLY PACKAGED.
- CABLE ASSEMBLY SHALL BE TESTED FOR CONTINUITY.
- CABLE ASSEMBLY LENGTH DETERMINED BY ITEM PN AND DESCRIPTION.

UNLESS OTHERWISE SPECIFIED, LEADING DIMENSIONS ARE IN INCHES. DIMENSIONS IN [ ] ARE MILLIMETERS.

TOLERANCES:  
 .X = ±.2 [5]  
 .XX = ±.02 [0.5]  
 .XXX = ±.005 [0.13]  
 FRACTIONS: ± 1/32  
 ANGLES: ± 1°

CABLE LENGTH TOLERANCES:  
 >12 [305] ≤ 60 [1524] = ±1 [25] / -0  
 >60 [1524] ≤ 120 [3048] = ±4 [102] / -0  
 >120 [3048] ≤ 300 [7620] = ±5 [127] / -0  
 >300 [7620] = ±5 [127] / -0

ALL DIMENSIONS ARE FOR REFERENCE ONLY. DIMENSIONS ON NON-CRITICAL FEATURES MAY VARY IN SIZE AND LOCATION. COLORS MAY VARY.

THE INFORMATION CONTAINED IN THIS DRAWING IS THE SOLE PROPERTY OF INFINITE ELECTRONICS, INC. ANY REPRODUCTION IN PART OR WHOLE WITHOUT THE WRITTEN PERMISSION OF INFINITE ELECTRONICS, INC. IS PROHIBITED. THESE COMMODITIES, TECHNOLOGY OR SOFTWARE WERE EXPORTED FROM THE UNITED STATES IN ACCORDANCE WITH THE EXPORT ADMINISTRATION REGULATIONS. DIVERSION CONTRARY TO U.S. LAW PROHIBITED.

LC 05 Rev-D4 Altize