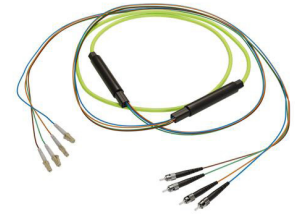


4-Fiber LC UPC to ST UPC,
OM5 Multimode Indoor Distribution Cable, 4.5mm
Plenum, 2.0mm breakout, Lime Green-10M



FCA-4M5LCUSTUPK2-10

Features

- 4X LC UPC to 4X ST UPC
- Indoor multimode OM5
- Plenum (OFNP) rated cable
- 4.5mm with tight-buffer and aramid yarn strength member
- 2mm TIA 598 color coded, .5M breakout
- Suitable for wall, ceiling, conduits, and between buildings

Applications

- Data centers
- Passive Optical Networks (PON)
- Local Area Networks (LAN)
- Enterprise Networking
- Storage and cloud based services
- AI data storage and communications
- Headend termination to a fiber backbone
- Terminations of data center fiber rack system

Description

L-com's FCA-4M5LCUSTUPK2-10 fiber optic distribution cable is engineered to provide reliable multimode fiber connectivity for indoor network environments. This cable assembly features a 4-fiber LC UPC to ST UPC configuration, utilizing OM5 multimode fiber with a 50/125 μm core size. Designed with a breakout structure, it ensures organized fiber distribution, making it an ideal choice for data centers, Passive Optical Networks (PON), Local Area Networks (LAN), enterprise networking, storage and cloud-based services, AI data storage and communications, headend termination to a fiber backbone, and data center fiber rack terminations where multi-fiber routing and consistent signal performance are critical.

The 4-fiber multimode breakout cable comes with a 4.5 mm overall diameter lime green plenum (OFNP)-rated PVC jacket that meets indoor fire safety standards. Each breakout fiber measures 2.0 mm and follows TIA-598 color coding for easy identification and termination, with a 0.5 m breakout length. This fiber optic distribution cable is constructed with tight-buffered fiber and reinforced with aramid yarn strength members, providing excellent mechanical durability. The cable features controlled bend radii, with a one-time bend radius of 1.329 inches and a repeated bend radius of 2.657 inches, ensuring optimal optical performance during installation and routing. It offers crush resistance values of 1000 N/100 mm (short-term) and 300 N/100 mm (long-term), making it highly suitable for robust indoor deployments.

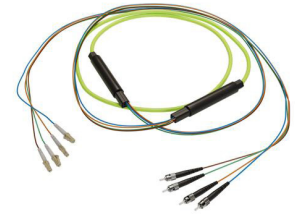
The FCA-4M5LCUSTUPK2-10 10-meter OM5 fiber optic assembly uses LC UPC to ST UPC connectors, which ensure low insertion loss and stable return loss performance. The maximum insertion loss is 0.30 dB, with a minimum return loss of 50 dB. Designed for indoor multimode OM5 applications, this plenum (OFNP)-rated cable is suitable for installation in walls, ceilings, conduits, and between buildings. It operates within a temperature range of 0°C to 60°C and has a non-rated ingress protection, ensuring reliable indoor performance.

L-com offers one of the most extensive in-stock selections of fiber optic distribution cables, with same-day shipping available for both domestic and international orders. Order today to take advantage of same-day shipping, and our expert technical support and knowledgeable sales team are available to help you select the 4-fiber LC UPC to ST UPC OM5 multimode distribution cable that fits your needs.

Configuration

| | |
|---------------------|--------------------|
| Function | Breakout |
| Cable Type | Base-4 Single Mode |
| Mode | Multimode |
| Mode Class | OM5 |
| Fiber Diameter | 50/125 μm |
| Connection 1 Type | LC |
| Connection 1 Polish | UPC |
| Connection 2 Type | ST |
| Connection 2 Polish | UPC |
| Cable Color | Lime Green |

4-Fiber LC UPC to ST UPC,
OM5 Multimode Indoor Distribution Cable, 4.5mm
Plenum, 2.0mm breakout, Lime Green-10M



FCA-4M5LCUSTUPK2-10

Optical Specifications

| Description | Minimum | Typical | Maximum | Units |
|---------------------------------|---------|---------|---------|-------|
| Return Loss - LC, ST, SC, FC | 30 | | | dB |
| Insertion Loss - LC, ST, SC, FC | | | 0.3 | dB |

Mechanical Specifications

Cable Assembly

| | |
|----------------|---------------------|
| Length | 10 m [393.70 in] |
| Width/Diameter | 4.5 mm |
| Weight | 92.53 g [0.204 lbs] |

Cable

| | |
|--|----------|
| Cable Type | Breakout |
| Static Bend Radius | 34 mm |
| Dynamic Bend Radius | 67 mm |
| Max Crush Resistance, Short Term (N/100mm) | 1,000 |
| Max Crush Resistance, Long Term (N/100mm) | 300 |

Connectors

| Description | Connector 1 | Connector 2 |
|------------------|-------------|-------------|
| Type | LC | ST |
| Connector Polish | UPC | UPC |

Environmental Specifications

| | |
|--------------------------------|------------------|
| Operating Range Temperature | 0 to +60 deg C |
| Storage Range Temperature | -20 to +60 deg C |
| Ingress Protection (IP) Rating | Non-Rated |

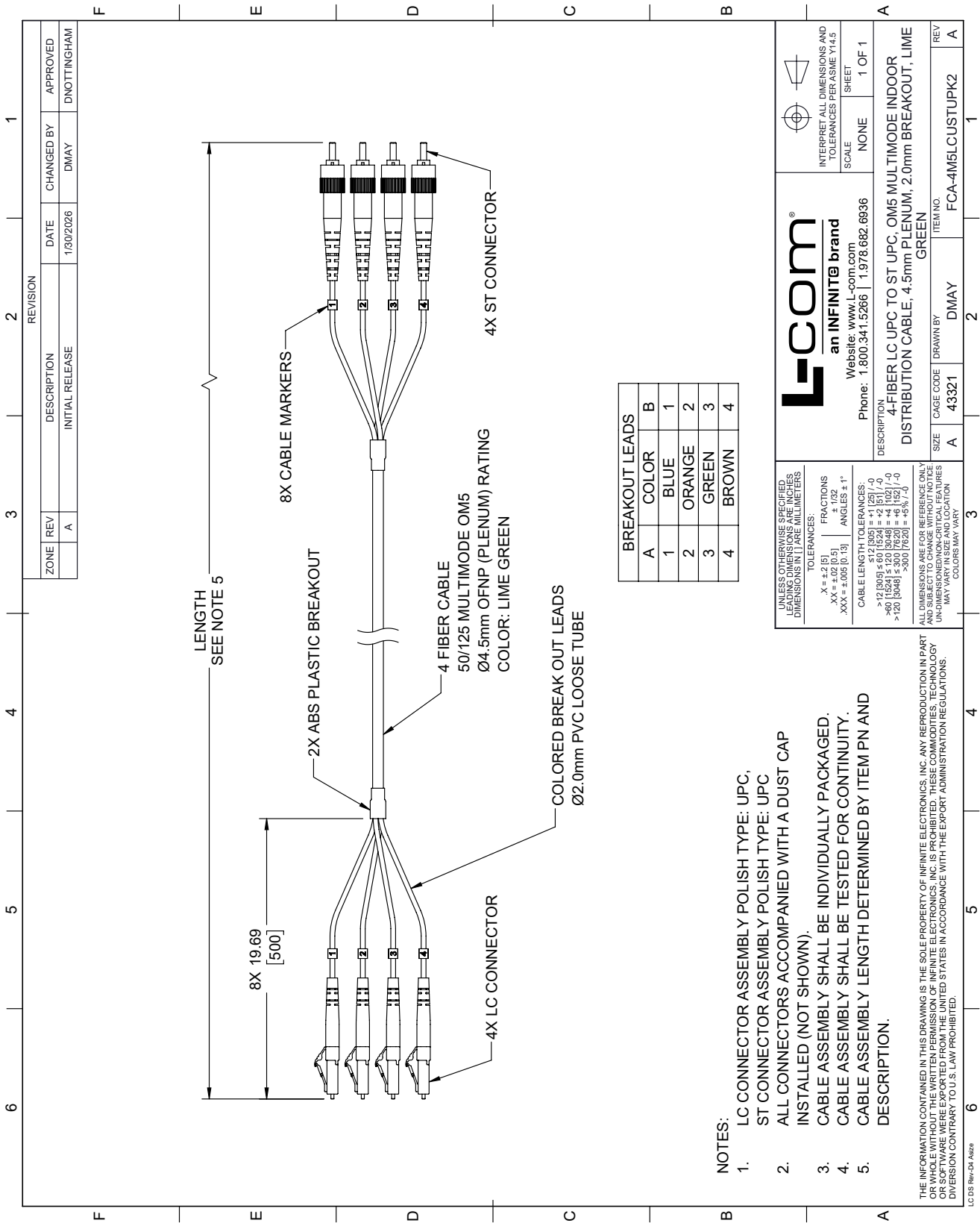
Compliance Certifications (see [product page](#) for current document)

Plotted and Other Data

Notes:

FCA-4M5LCUSTUPK2-10 CAD Drawing

4-Fiber LC UPC to ST UPC, OM5 Multimode Indoor Distribution Cable, 4.5mm Plenum, 2.0mm breakout, Lime Green-10M



| REVISION | | DATE | CHANGED BY | APPROVED | |
|----------|-----|-------------|-----------------|----------|-------------|
| ZONE | REV | DESCRIPTION | INITIAL RELEASE | DMAY | DNOTTINGHAM |
| | A | | | | |

| BREAKOUT LEADS | | | |
|----------------|--------|---|--|
| A | COLOR | B | |
| 1 | BLUE | 1 | |
| 2 | ORANGE | 2 | |
| 3 | GREEN | 3 | |
| 4 | BROWN | 4 | |

L-com
an INFINITE brand
Website: www.l-com.com
Phone: 1.800.341.5266 | 1.978.682.6936

INTERPRET ALL DIMENSIONS AND TOLERANCES PER ASME Y14.5
SCALE NONE SHEET 1 OF 1

| DESCRIPTION | ITEM NO. | REV |
|---|------------------|----------|
| 4-FIBER LC UPC TO ST UPC, OM5 MULTIMODE INDOOR DISTRIBUTION CABLE, 4.5mm PLENUM, 2.0mm BREAKOUT, LIME GREEN | FCA-4M5LCUSTUPK2 | A |
| SIZE | CAGE CODE | DRAWN BY |
| A | 43321 | DMAY |

- NOTES:**
- LC CONNECTOR ASSEMBLY POLISH TYPE: UPC, ST CONNECTOR ASSEMBLY POLISH TYPE: UPC
 - ALL CONNECTORS ACCOMPANIED WITH A DUST CAP INSTALLED (NOT SHOWN).
 - CABLE ASSEMBLY SHALL BE INDIVIDUALLY PACKAGED.
 - CABLE ASSEMBLY SHALL BE TESTED FOR CONTINUITY.
 - CABLE ASSEMBLY LENGTH DETERMINED BY ITEM PN AND DESCRIPTION.

UNLESS OTHERWISE SPECIFIED, LEAD DIMENSIONS IN INCHES AND DIMENSIONS IN PARENTHESES IN MILLIMETERS
TOLERANCES:
.X = ±.2 (5) FRACTIONS ±.1 (2)
.XX = ±.02 (0.5) ANGLES ± 1°
.XXX = ±.005 (0.13)
CABLE LENGTH TOLERANCES:
≤ 12 (305) ±.01 (25) / -0
> 12 (305) ≤ 60 (1524) ±.02 (5) / -0
> 60 (1524) ≤ 300 (7620) ±.04 (10) / -0
> 300 (7620) ±.06 (15) / -0
ALL DIMENSIONS ARE FOR REFERENCE ONLY AND SUBJECT TO CHANGE WITHOUT NOTICE
UNLESS OTHERWISE SPECIFIED, LEAD DIMENSIONS IN INCHES AND DIMENSIONS IN PARENTHESES IN MILLIMETERS
MAY VARY
COLORS MAY VARY

THIS INFORMATION CONTAINED IN THIS DRAWING IS THE SOLE PROPERTY OF INFINITE ELECTRONICS, INC. ANY REPRODUCTION IN PART OR WHOLE WITHOUT THE WRITTEN PERMISSION OF INFINITE ELECTRONICS, INC. IS PROHIBITED. THESE COMMODITIES, TECHNOLOGY OR SOFTWARE WERE EXPORTED FROM THE UNITED STATES IN ACCORDANCE WITH THE EXPORT ADMINISTRATION REGULATIONS. DIVERSION CONTRARY TO U.S. LAW PROHIBITED.

LC DS Rev-04 Adda