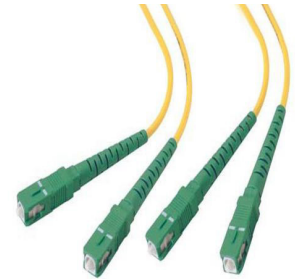


Fiber Optic Patch Cable, Dual SC APC to SC APC, SM OS2, 2.0mm LSZH, Yellow-1M



FCA-2S2SCASCAZ2-1

Features

- Single Mode OS2 indoor fiber optic cable assembly
- Dual SC APC to Dual SC APC
- Indoor Low smoke zero halogen (LSZH) cable
- Suitable for confined installations where flame resistance is required
- 2.0mm x 4.1mm duplex zip-cord
- Custom lengths available with the same fast delivery

Applications

- Telecom & Networking
- Data Centers
- Enterprise and Corporate Networks
- Broadcasting & Media Production
- Military & Defense
- Healthcare & Medical Imaging
- Transportation & Rail
- Oil & Gas

Description

The L-com FCA-2S2SCASCAZ2-1 is a fiber optic patch cable assembly that is equipped with dual SC/APC to dual SC/APC connectors. This cable assembly comes with a single mode OS2 fiber that offers stable, high-speed transmission over long distances. The yellow fiber optic cable has an LSZH-rated PE jacket.

Our fiber optic cable assembly can be customized in different lengths to fit specific installation needs, ensuring efficient network management in high-density setups without compromising delivery time or quality. L-com's FCA-2S2SCASCAZ2-1 patch cable has a maximum insertion loss of 0.3 dB and has a length of 1 meter. With an operating temperature range of -20 to 70 degrees C, this cable assembly provides reliable performance across diverse conditions.

This fiber optic cable from L-com is suitable for applications such as telecom and networking, data centers, enterprise and corporate networks, broadcasting and media production, military and defense, healthcare and medical imaging, transportation and rail, and oil and gas. Our patch cable comes with a fiber diameter of 9/125 um and a cable diameter of 2 mm. Additional dimensions, specifications, and CAD drawings for this FCA-2S2SCASCAZ2-1 fiber optic cord component can be found on its downloadable PDF datasheet.

L-com has one of the largest in-stock selections of dual SC/APC to dual SC/APC fiber optic patch cords for international and domestic orders. We are committed to delivering excellent service to support our customers in maintaining the continuity and reliability of their networks. For further information on similar products, our expert technical support and knowledgeable sales team can help you get the ideal OS2 single mode fiber optic cable that meets your requirements.

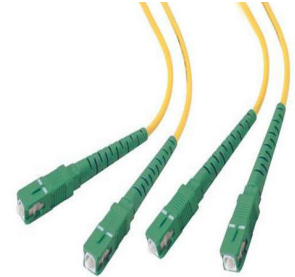
Configuration

Function	Patch
Cable Type	Duplex Single Mode
Mode	Single Mode
Mode Class	OS2
Fiber Diameter	9/125 um
Connection 1 Type	SC
Connection 1 Polish	APC
Connection 2 Type	SC
Connection 2 Polish	APC
Cable Color	Yellow

Optical Specifications

Description	Minimum	Typical	Maximum	Units
Return Loss - LC, ST, SC, FC	60			dB

Fiber Optic Patch Cable, Dual SC APC to SC APC, SM OS2, 2.0mm LSZH, Yellow-1M



FCA-2S2SCASCAZ2-1

Optical Specifications

Description	Minimum	Typical	Maximum	Units
Insertion Loss - LC, ST, SC, FC			0.3	dB

Mechanical Specifications

Cable Assembly

Length	1 m [39.37 in]
Width/Diameter	2 mm
Weight	13.15 g [0.029 lbs]

Cable

Cable Type	Patch
Static Bend Radius	15 mm
Dynamic Bend Radius	30 mm
Max Crush Resistance, Short Term (N/100mm)	300
Max Crush Resistance, Long Term (N/100mm)	100

Connectors

Description	Connector 1	Connector 2
Type	SC	SC
Connector Polish	APC	APC

Environmental Specifications

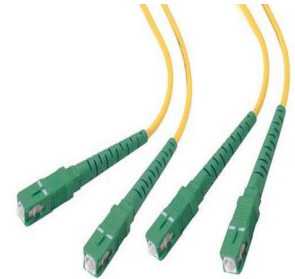
Operating Range Temperature	-20 to +70 deg C
Storage Range Temperature	-40 to +70 deg C
Ingress Protection (IP) Rating	Non-Rated

Compliance Certifications (see [product page](#) for current document)

Plotted and Other Data

Notes:

Fiber Optic Patch Cable, Dual SC APC to SC APC, SM OS2, 2.0mm LSZH, Yellow-1M



FCA-2S2SCASCAZ2-1

Typical Performance Data

How to Order

Part Number Configuration:

FCA-2S2SCASCAZ2

-XX

UU

Unit of Measure:

F = Feet

<blank> = Meters

Lengths

Base Number

Example: FCA-2S2SCASCAZ2-12 = 12 meters long cable
FCA-2S2SCASCAZ2-10F = 10 feet long cable

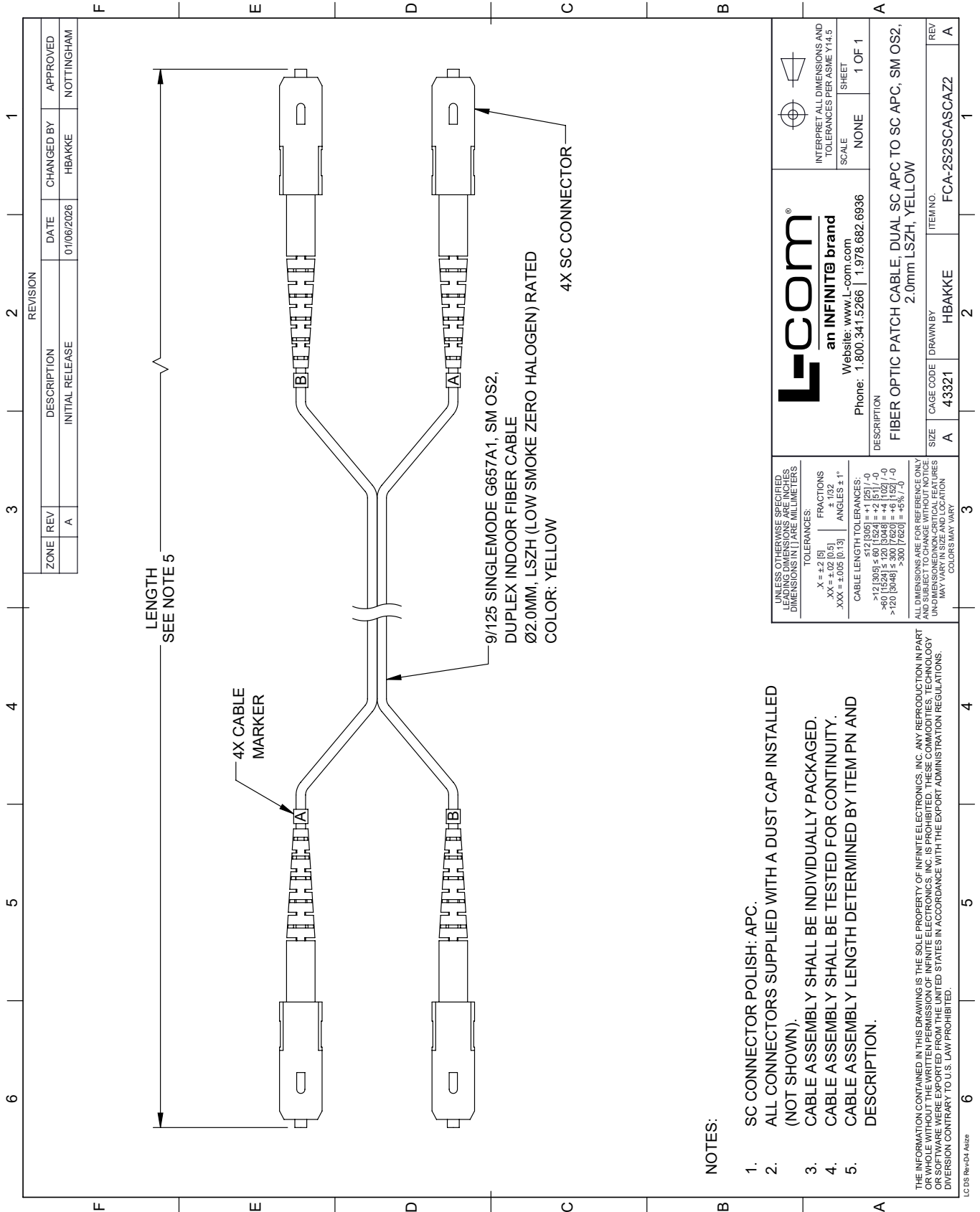
Fiber Optic Patch Cable, Dual SC APC to SC APC, SM OS2, 2.0mm LSZH, Yellow-1M from L-com has same day shipment for domestic and International orders. Our portfolio includes coaxial cable assemblies, connectors, adapters and custom products as well as lightning and surge protectors, NEMA rated enclosures, and an RF product line which includes antennas, amplifiers, passive, and active components.

URL: <https://www.l-com.com/fiber-optic-patch-cable-dual-sc-apc-sc-apc-sm-os2-2.0mm-lszh-yellow-1m-fca-2s2scascaz2-1-p.aspx>


The information contained within this document is accurate to the best of our knowledge and representative of the part described herein. It may be necessary to make modifications to the part and/or the documentation of the part in order to implement improvements. L-com reserves the right to make such changes as required. Unless otherwise stated, all specifications are nominal. L-com does not make any representation or warranty regarding the suitability of the part described herein for any particular purpose, and L-com does not assume liability arising out of the use of any part or document.

FCA-2S2SCASCAZ2-1 CAD Drawing

Fiber Optic Patch Cable, Dual SC APC to SC APC, SM OS2, 2.0mm LSZH, Yellow-1M



REVISION		DATE	CHANGED BY	APPROVED
ZONE	REV			
	A	01/06/2026	HBAKKE	NOTTINGHAM
DESCRIPTION				
INITIAL RELEASE				

 an INFINITE brand Website: www.L-com.com		INTERPRET ALL DIMENSIONS AND TOLERANCES PER ASME Y14.5 SCALE: NONE SHEET: 1 OF 1
DESCRIPTION: FIBER OPTIC PATCH CABLE, DUAL SC APC TO SC APC, SM OS2, 2.0mm LSZH, YELLOW		
SIZE: A	CAGE CODE: 43321	ITEM NO.: FCA-2S2SCASCAZ2
DRAWN BY: HBAKKE		REV: A

UNLESS OTHERWISE SPECIFIED, DIMENSIONS ARE IN INCHES. LEADING DIMENSIONS ARE IN PARENTHESES. DIMENSIONS IN [] ARE MILLIMETERS.

TOLERANCES:
 .X = ±.2 (5)
 .XX = ±.02 (0.5)
 .XXX = ±.005 (0.13)
 FRACTIONS: ± 1/32
 ANGLES: ± 1°

CABLE LENGTH TOLERANCES:
 <12 (305) ≤ 60 (1524) = ±.125 (-0)
 >60 (1524) ≤ 120 (3048) = ±.125 (-0)
 >120 (3048) ≤ 300 (7620) = ±.125 (-0)
 >300 (7620) = ±.25 (-0)

ALL DIMENSIONS ARE FOR REFERENCE ONLY. DIMENSIONS OF NON-CRITICAL FEATURES MAY VARY IN SIZE AND LOCATION. COLORS MAY VARY.

- NOTES:
- SC CONNECTOR POLISH: APC.
 - ALL CONNECTORS SUPPLIED WITH A DUST CAP INSTALLED (NOT SHOWN).
 - CABLE ASSEMBLY SHALL BE INDIVIDUALLY PACKAGED.
 - CABLE ASSEMBLY SHALL BE TESTED FOR CONTINUITY.
 - CABLE ASSEMBLY LENGTH DETERMINED BY ITEM PN AND DESCRIPTION.

THE INFORMATION CONTAINED IN THIS DRAWING IS THE SOLE PROPERTY OF INFINITE ELECTRONICS, INC. ANY REPRODUCTION IN PART OR WHOLE WITHOUT THE WRITTEN PERMISSION OF INFINITE ELECTRONICS, INC. IS PROHIBITED. THESE COMMODITIES, TECHNOLOGY OR SOFTWARE WERE EXPORTED FROM THE UNITED STATES IN ACCORDANCE WITH THE EXPORT ADMINISTRATION REGULATIONS. DIVISION CONTRARY TO U.S. LAW PROHIBITED.

LC 08 Rev-D4 Atsize