

Fiber Optic Patch Cable, Duplex FC UPC, NK to SC APC, SM OS2, 2.0mm Plenum, Yellow-1M



FCA-2S2FCUSCAP2-1

Features

- Single Mode OS2 indoor fiber optic cable assembly
- Dual FC UPC to Dual SC APC
- Indoor Plenum (OFNP) rated cable
- Suitable for wall, ceiling, conduits, and between buildings
- 2.0mm x 4.1mm duplex zip-cord
- Custom lengths available with the same fast delivery

Applications

- Telecom & Networking
- Data Centers
- Fiber Optic Test & Measurement
- Medical & Biomedical
- Military & Defense
- Industrial Automation & Sensing
- Scientific Research & High-Precision Optical Systems

Description

The L-com FCA-2S2FCUSCAP2-1 is a fiber optic patch cable assembly that is equipped with dual FC/UPC to dual SC/APC connectors. This cable assembly comes with a single mode OS2 fiber that offers stable, high-speed transmission over long distances. The yellow fiber optic cable assembly has an OFNP-rated PVC jacket and a cable length of 1 meter.

Our fiber optic cable can be customized in different lengths to fit specific installation needs, ensuring efficient network management in high-density setups without compromising delivery time or quality. L-com's FCA-2S2FCUSCAP2-1 patch cable has a maximum insertion loss of 0.3 dB. With an operating temperature range of 0 to 60 degrees C, this cable assembly provides reliable performance across diverse conditions.

This fiber optic cable from L-com is suitable for applications such as telecom and networking, data centers, fiber optic test and measurement, medical and biomedical, military and defense, industrial automation and sensing, and scientific research and high precision optical systems. Our patch cable comes with a fiber diameter of 9/125 μm and a cable diameter of 2 mm. Additional dimensions, specifications, and CAD drawings for this duplex fiber optic cord can be found on its downloadable PDF datasheet.

L-com has one of the largest in-stock selections of dual FC/UPC to dual SC/APC fiber optic patch cords for international and domestic orders. We are committed to delivering excellent service to support our customers in maintaining the continuity and reliability of their networks. For further information on similar products, our expert technical support and knowledgeable sales team can help you get the ideal OS2 single mode fiber optic cable that meets your requirements.

Configuration

| | |
|---------------------|--------------------|
| Function | Patch |
| Cable Type | Duplex Single Mode |
| Mode | Single Mode |
| Mode Class | OS2 |
| Fiber Diameter | 9/125 μm |
| Connection 1 Type | FC |
| Connection 1 Polish | UPC |
| Connection 2 Type | SC |
| Connection 2 Polish | APC |
| Cable Color | Yellow |

Optical Specifications

| Description | Minimum | Typical | Maximum | Units |
|------------------------------|---------|---------|---------|-------|
| Return Loss - LC, ST, SC, FC | 50 | | | dB |

Fiber Optic Patch Cable, Duplex FC UPC, NK to SC APC, SM OS2, 2.0mm Plenum, Yellow-1M



FCA-2S2FCUSCAP2-1

Optical Specifications

| Description | Minimum | Typical | Maximum | Units |
|---------------------------------|---------|---------|---------|-------|
| Insertion Loss - LC, ST, SC, FC | | | 0.3 | dB |

Mechanical Specifications

Cable Assembly

| | |
|----------------|---------------------|
| Length | 1 m [39.37 in] |
| Width/Diameter | 2 mm |
| Weight | 15.88 g [0.035 lbs] |

Cable

| | |
|--|-------|
| Cable Type | Patch |
| Static Bend Radius | 15 mm |
| Dynamic Bend Radius | 30 mm |
| Max Crush Resistance, Short Term (N/100mm) | 300 |
| Max Crush Resistance, Long Term (N/100mm) | 100 |

Connectors

| Description | Connector 1 | Connector 2 |
|------------------|---------------------------|-------------|
| Type | FC | SC |
| Specification | Key with of 1.95mm-2.05mm | |
| Connector Polish | UPC | APC |

Environmental Specifications

| | |
|--------------------------------|------------------|
| Operating Range Temperature | 0 to +60 deg C |
| Storage Range Temperature | -20 to +60 deg C |
| Ingress Protection (IP) Rating | Non-Rated |

Compliance Certifications (see [product page](#) for current document)

Plotted and Other Data

Notes:

Fiber Optic Patch Cable, Duplex FC UPC, NK to SC APC, SM OS2, 2.0mm Plenum, Yellow-1M



FCA-2S2FCUSCAP2-1

Typical Performance Data

How to Order

Part Number Configuration:

FCA-2S2FCUSCAP2

-XX

UU

Unit of Measure:

F = Feet

<blank> = Meters

Lengths

Base Number

Example: FCA-2S2FCUSCAP2-12 = 12 meters long cable
FCA-2S2FCUSCAP2-10F = 10 feet long cable

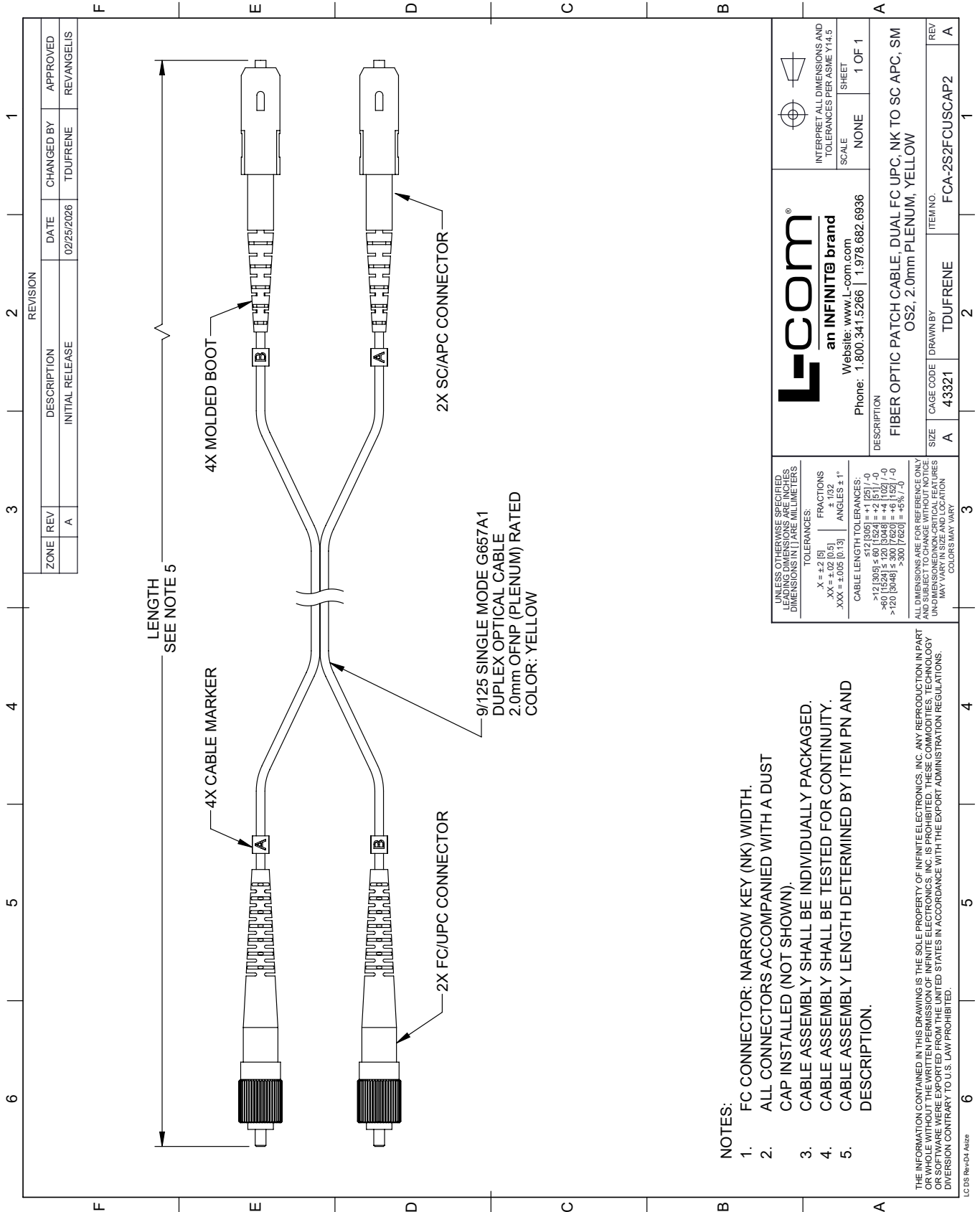
Fiber Optic Patch Cable, Duplex FC UPC, NK to SC APC, SM OS2, 2.0mm Plenum, Yellow-1M from L-com has same day shipment for domestic and International orders. Our portfolio includes coaxial cable assemblies, connectors, adapters and custom products as well as lightning and surge protectors, NEMA rated enclosures, and an RF product line which includes antennas, amplifiers, passive, and active components.

URL: <https://www.l-com.com/fiber-optic-patch-cable-duplex-fc-upc-nk-sc-apc-sm-os2-2.0mm-plenum-yellow-1m-fca-2s2fcuscap2-1>

The information contained within this document is accurate to the best of our knowledge and representative of the part described herein. It may be necessary to make modifications to the part and/or the documentation of the part in order to implement improvements. L-com reserves the right to make such changes as required. Unless otherwise stated, all specifications are nominal. L-com does not make any representation or warranty regarding the suitability of the part described herein for any particular purpose, and L-com does not assume liability arising out of the use of any part or document.

FCA-2S2FCUSCAP2-1 CAD Drawing

Fiber Optic Patch Cable, Duplex FC UPC, NK to SC APC, SM OS2, 2.0mm Plenum, Yellow-1M



| REVISION | | DATE | CHANGED BY | APPROVED |
|----------|-----|-----------------|------------|------------|
| ZONE | REV | DESCRIPTION | TDUFRENE | REVANGELIS |
| | A | INITIAL RELEASE | | |

| | | |
|---|------------------|--|
| an INFINITE brand Website: www.L-com.com | | INTERPRET ALL DIMENSIONS AND TOLERANCES PER ASME Y14.5 |
| Phone: 1.800.341.5266 1.978.682.6936 | | SCALE: NONE SHEET: 1 OF 1 |
| DESCRIPTION: FIBER OPTIC PATCH CABLE, DUAL FC UPC, NK TO SC APC, SM OS2, 2.0mm PLENUM, YELLOW | | |
| SIZE: A | CAGE CODE: 43321 | ITEM NO.: FCA-2S2FCUSCAP2 |
| DRAWN BY: TDUFRENE | | REV: A |

UNLESS OTHERWISE SPECIFIED, LEADING DIMENSIONS ARE IN INCHES. DIMENSIONS IN [] ARE MILLIMETERS.

TOLERANCES:
 .X = ±.2 [5]
 .XX = ±.02 [0.5]
 .XXX = ±.005 [0.13]

FRACTIONS: ±.132
 ANGLES ± 1°

CABLE LENGTH TOLERANCES:
 <12 [305] ≤ 60 [1524] = +1 [25] / -0
 >60 [1524] ≤ 120 [3048] = +4 [102] / -0
 >120 [3048] ≤ 300 [7620] = +5 [127] / -0
 >300 [7620] = +5 [127] / -0

ALL DIMENSIONS ARE FOR REFERENCE ONLY. DIMENSIONS OF INDIVIDUAL FEATURES MAY VARY IN SIZE AND LOCATION. COLORS MAY VARY.

THE INFORMATION CONTAINED IN THIS DRAWING IS THE SOLE PROPERTY OF INFINITE ELECTRONICS, INC. ANY REPRODUCTION IN PART OR WHOLE WITHOUT THE WRITTEN PERMISSION OF INFINITE ELECTRONICS, INC. IS PROHIBITED. THESE COMMODITIES, TECHNOLOGY OR SOFTWARE WERE EXPORTED FROM THE UNITED STATES IN ACCORDANCE WITH THE EXPORT ADMINISTRATION REGULATIONS. DIVISION CONTRARY TO U.S. LAW PROHIBITED.

LC 05 Rev-D4 Altize

- NOTES:
1. FC CONNECTOR: NARROW KEY (NK) WIDTH.
 2. ALL CONNECTORS ACCOMPANIED WITH A DUST CAP INSTALLED (NOT SHOWN).
 3. CABLE ASSEMBLY SHALL BE INDIVIDUALLY PACKAGED.
 4. CABLE ASSEMBLY SHALL BE TESTED FOR CONTINUITY.
 5. CABLE ASSEMBLY LENGTH DETERMINED BY ITEM PN AND DESCRIPTION.