

Fiber Optic Patch Cable, Duplex FC APC, NK to SC APC, SM OS2, 2.0mm Riser, Yellow-1M



**FCA-2S2FCASCAR2-1**

**Features**

- Single Mode OS2 indoor fiber optic cable assembly
- Dual FC APC to Dual SC APC
- Indoor Riser (OFNR) cable
- Suitable for ceilings and riser areas
- 2.0mm x 4.1mm duplex zip-cord
- Custom lengths available with the same fast delivery

**Applications**

- Telecom & Networking
- Data Centers
- Fiber Optic Test & Measurement
- Medical & Biomedical
- Military & Defense
- Industrial Automation & Sensing
- Scientific Research & High-Precision Optical Systems

**Description**

The L-com FCA-2S2FCASCAR2-1 is a fiber optic patch cable assembly that is equipped with dual FC/APC to dual SC/APC connectors. This cable assembly comes with a single mode OS2 fiber that offers stable, high-speed transmission over long distances. The yellow fiber optic cable assembly has an OFNR-rated PVC jacket and a cable length of 1 meter.

Our fiber optic cable can be customized in different lengths to fit specific installation needs, ensuring efficient network management in high-density setups without compromising delivery time or quality. L-com's FCA-2S2FCASCAR2-1 patch cable has a maximum insertion loss of 0.3 dB. With an operating temperature range of -20 to 70 degrees C, this cable assembly provides reliable performance across diverse conditions.

This fiber optic cable from L-com is suitable for applications such as telecom and networking, data centers, fiber optic test and measurement, medical and biomedical, military and defense, industrial automation and sensing, and scientific research and high precision optical systems. Our patch cable comes with a fiber diameter of 9/125 μm and a cable diameter of 2 mm. Additional dimensions, specifications, and CAD drawings for this duplex fiber optic cord can be found on its downloadable PDF datasheet.

L-com has one of the largest in-stock selections of dual FC/APC to dual SC/APC fiber optic patch cords for international and domestic orders. We are committed to delivering excellent service to support our customers in maintaining the continuity and reliability of their networks. For further information on similar products, our expert technical support and knowledgeable sales team can help you get the ideal OS2 single mode fiber optic cable that meets your requirements.

**Configuration**

Function	Patch
Cable Type	Duplex Single Mode
Mode	Single Mode
Mode Class	OS2
Fiber Diameter	9/125 μm
Connection 1 Type	FC
Connection 1 Polish	APC
Connection 2 Type	SC
Connection 2 Polish	APC
Cable Color	Yellow

**Optical Specifications**

Description	Minimum	Typical	Maximum	Units
Return Loss - LC, ST, SC, FC	60			dB

Fiber Optic Patch Cable, Duplex FC APC, NK to SC APC, SM OS2, 2.0mm Riser, Yellow-1M



## FCA-2S2FCASCAR2-1

### Optical Specifications

Description	Minimum	Typical	Maximum	Units
Insertion Loss - LC, ST, SC, FC			0.3	dB

### Mechanical Specifications

#### Cable Assembly

Length	1 m [39.37 in]
Width/Diameter	2 mm
Weight	15.88 g [0.035 lbs]

#### Cable

Cable Type	Patch
Static Bend Radius	15 mm
Dynamic Bend Radius	30 mm
Max Crush Resistance, Short Term (N/100mm)	300
Max Crush Resistance, Long Term (N/100mm)	100

### Connectors

Description	Connector 1	Connector 2
Type	FC	SC
Specification	Key with of 1.95mm-2.05mm	
Connector Polish	APC	APC

### Environmental Specifications

Operating Range Temperature	-20 to +70 deg C
Storage Range Temperature	-40 to +70 deg C
Ingress Protection (IP) Rating	Non-Rated

**Compliance Certifications** (see [product page](#) for current document)

### Plotted and Other Data

Notes:

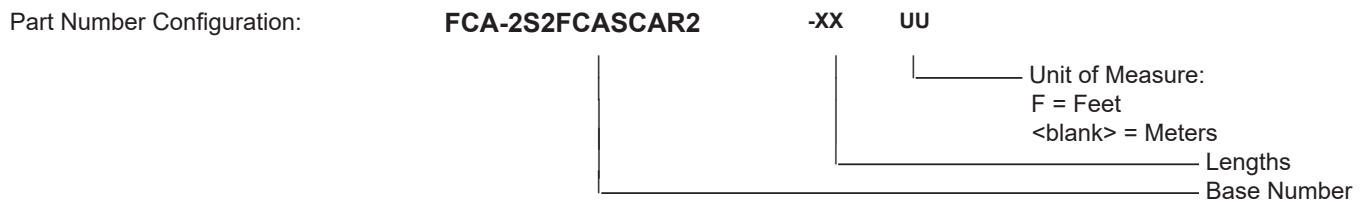
Fiber Optic Patch Cable, Duplex FC APC, NK to SC APC, SM OS2, 2.0mm Riser, Yellow-1M



## FCA-2S2FCASCAR2-1

### Typical Performance Data

### How to Order



Example: FCA-2S2FCASCAR2-12 = 12 meters long cable  
FCA-2S2FCASCAR2-10F = 10 feet long cable

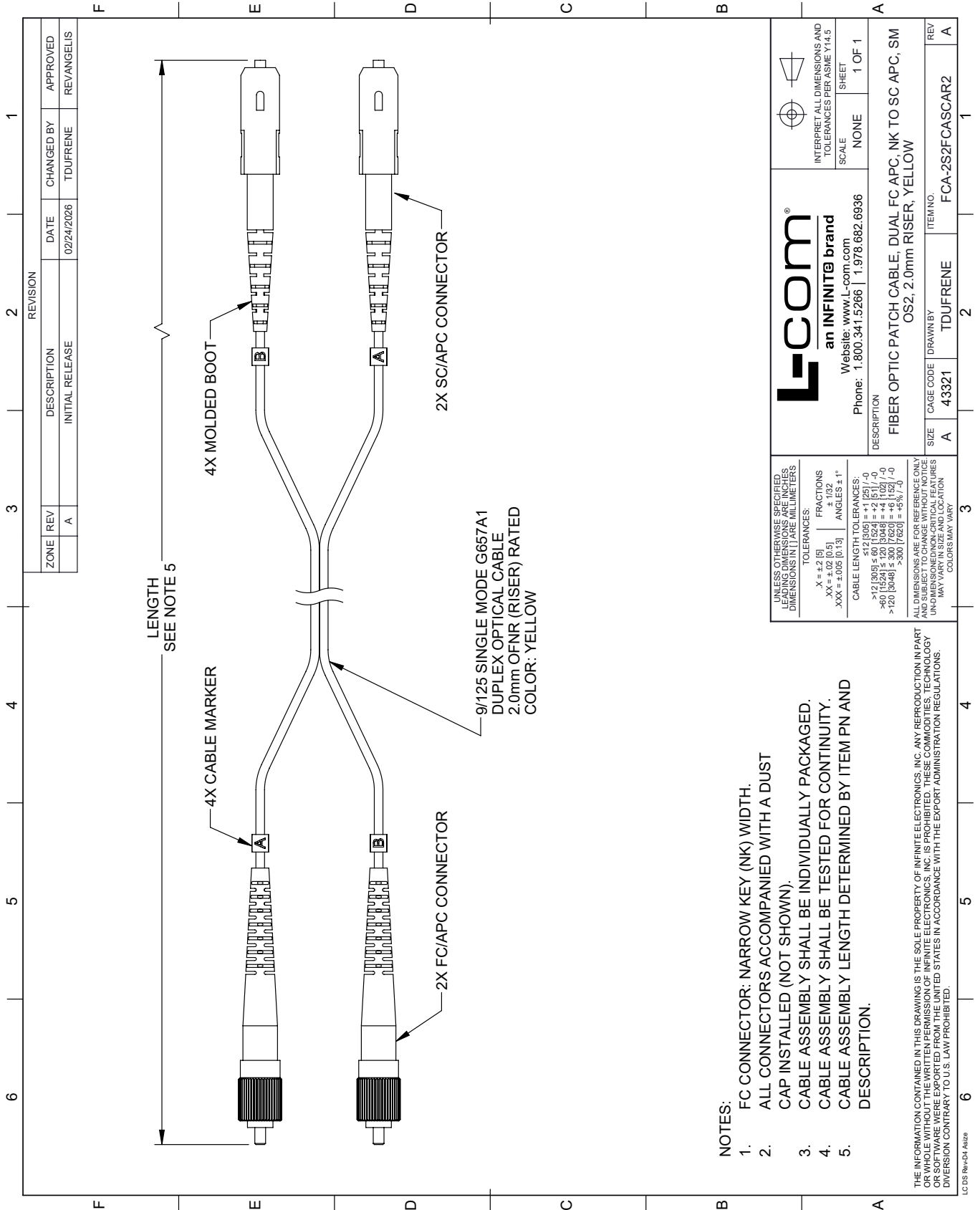
Fiber Optic Patch Cable, Duplex FC APC, NK to SC APC, SM OS2, 2.0mm Riser, Yellow-1M from L-com has same day shipment for domestic and International orders. Our portfolio includes coaxial cable assemblies, connectors, adapters and custom products as well as lightning and surge protectors, NEMA rated enclosures, and an RF product line which includes antennas, amplifiers, passive, and active components.

URL: <https://www.l-com.com/fiber-optic-patch-cable-duplex-fc-apc-nk-sc-apc-sm-os2-2.0mm-riser-yellow-1m-fca-2s2fcascar2-1>

The information contained within this document is accurate to the best of our knowledge and representative of the part described herein. It may be necessary to make modifications to the part and/or the documentation of the part in order to implement improvements. L-com reserves the right to make such changes as required. Unless otherwise stated, all specifications are nominal. L-com does not make any representation or warranty regarding the suitability of the part described herein for any particular purpose, and L-com does not assume liability arising out of the use of any part or document.

# FCA-2S2FCASCAR2-1 CAD Drawing

Fiber Optic Patch Cable, Duplex FC APC, NK to SC APC, SM OS2, 2.0mm Riser, Yellow-1M



**NOTES:**

1. FC CONNECTOR: NARROW KEY (NK) WIDTH.
2. ALL CONNECTORS ACCOMPANIED WITH A DUST CAP INSTALLED (NOT SHOWN).
3. CABLE ASSEMBLY SHALL BE INDIVIDUALLY PACKAGED.
4. CABLE ASSEMBLY SHALL BE TESTED FOR CONTINUITY.
5. CABLE ASSEMBLY LENGTH DETERMINED BY ITEM PN AND DESCRIPTION.

THE INFORMATION CONTAINED IN THIS DRAWING IS THE SOLE PROPERTY OF INFINITE ELECTRONICS, INC. ANY REPRODUCTION IN PART OR WHOLE WITHOUT THE WRITTEN PERMISSION OF INFINITE ELECTRONICS, INC. IS PROHIBITED. THESE COMMODITIES, TECHNOLOGY OR SOFTWARE WERE EXPORTED FROM THE UNITED STATES IN ACCORDANCE WITH THE EXPORT ADMINISTRATION REGULATIONS. DIVISION CONTRARY TO U.S. LAW PROHIBITED.

UNLESS OTHERWISE SPECIFIED, LEADING DIMENSIONS SHALL BE IN INCHES. DIMENSIONS IN [ ] ARE MILLIMETERS.		L-com® an INFINITE brand Website: www.L-com.com Phone: 1.800.341.5266   1.978.682.6936		INTERPRET ALL DIMENSIONS AND TOLERANCES PER ASME Y14.5	
TOLERANCES: .X = ±.2 [5] .XX = ±.02 [0.5] .XXX = ±.005 [0.13]		FRACTIONS ± 1/32		SCALE NONE	
CABLE LENGTH TOLERANCES: ≤ 12 [305] ≤ 60 [1524] = +2 [51] / -0 > 60 [1524] ≤ 120 [3048] = +4 [102] / -0 > 120 [3048] ≤ 300 [7620] = +5 [127] / -0 > 300 [7620] = +5 [127] / -0		ANGLES ± 1°		SHEET 1 OF 1	
ALL DIMENSIONS ARE FOR REFERENCE ONLY. UNLESS OTHERWISE SPECIFIED, ALL DIMENSIONS ARE NON-CRITICAL FEATURES. MAY VARY IN SIZE AND LOCATION. COLORS MAY VARY.		DESCRIPTION FIBER OPTIC PATCH CABLE, DUAL FC APC, NK TO SC APC, SM OS2, 2.0mm RISER, YELLOW		REV A	
SIZE A		CAGE CODE 43321		ITEM NO. FCA-2S2FCASCAR2	
DRAWN BY TDUFRENE		REV A		REV A	