



Fiber Optic Patch Cable, Dual LC UPC to SC UPC, MM OM3, 2.0mm Plenum, Aqua-3M

FCA-2M3LCUSCUP2-3

Features

- OM3 multimode fiber optic cable assembly
- Dual LC/UPC to Dual SC/UPC
- 2.0mm x 4.1mm Plenum rated cable for indoor applications
- Custom lengths available with the same fast delivery.

Applications

- Telecom & Networking
- Data Centers
- Enterprise and Corporate Networks
- Broadcasting & Media Production
- Military & Defense
- Healthcare & Medical Imaging
- Transportation & Rail
- Oil & Gas

Description

The L-com FCA-2M3LCUSCUP2-3 is a fiber optic patch cable assembly that is equipped with dual LC/UPC to dual SC/UPC connectors. As an OM3 fiber optic jumper, this patch cable assembly is optimized for high-speed, high-bandwidth data transfer, supporting faster, longer-distance connectivity compared to OM1 fiber. The aqua blue fiber optic cable assembly has an OFNP-rated PVC jacket and a cable length of 3 meters.

Our fiber optic cable can be customized in different lengths to fit specific installation needs, ensuring efficient network management in high-density setups without compromising delivery time or quality. L-com's FCA-2M3LCUSCUP2-3 patch cable has a maximum insertion loss of 0.3 dB. With an operating temperature range of 0 to 60 degrees C, this cable assembly provides reliable performance across diverse conditions.

This fiber optic cable from L-com is suitable for applications such as telecom and networking, data centers, enterprise and corporate networks, broadcasting and media production, military and defense, healthcare and medical imaging, transportation and rail, and oil and gas. Our patch cable comes with a fiber diameter of 50/125 μm and a cable diameter of 2 mm. Additional dimensions, specifications, and CAD drawings for this FCA-2M3LCUSCUP2-3 fiber optic cord can be found on its downloadable PDF datasheet.

L-com has one of the largest in-stock selections of dual LC/UPC to dual SC/UPC fiber optic patch cords for international and domestic orders. We are committed to delivering excellent service to support our customers in maintaining the continuity and reliability of their networks. For further information on similar products, our expert technical support and knowledgeable sales team can help you get the ideal OM3 multimode fiber optic cable that meets your requirements.

Configuration

Function	Patch
Cable Type	Duplex Multimode
Mode	Multimode
Mode Class	OM3
Fiber Diameter	50/125 μm
Connection 1 Type	LC
Connection 1 Polish	UPC
Connection 2 Type	SC
Connection 2 Polish	UPC
Cable Color	Aqua Blue

Optical Specifications

Description	Minimum	Typical	Maximum	Units
Return Loss - LC, ST, SC, FC	30			dB

Fiber Optic Patch Cable, Dual LC UPC to SC UPC, MM OM3, 2.0mm Plenum, Aqua-3M



FCA-2M3LCUSCUP2-3

Optical Specifications

Description	Minimum	Typical	Maximum	Units
Insertion Loss - LC, ST, SC, FC			0.3	dB

Mechanical Specifications

Cable Assembly

Length	3 m [118.11 in]
Width/Diameter	2 mm
Weight	8.16 g [0.018 lbs]

Cable

Cable Type	Patch
Static Bend Radius	15 mm
Dynamic Bend Radius	30 mm
Max Crush Resistance, Short Term (N/100mm)	300
Max Crush Resistance, Long Term (N/100mm)	100

Connectors

Description	Connector 1	Connector 2
Type	LC	SC
Connector Polish	UPC	UPC

Environmental Specifications

Operating Range Temperature	0 to +60 deg C
Storage Range Temperature	-20 to +60 deg C
Ingress Protection (IP) Rating	Non-Rated

Compliance Certifications (see [product page](#) for current document)

Plotted and Other Data

Notes:

Fiber Optic Patch Cable, Dual LC UPC to SC UPC, MM OM3, 2.0mm Plenum, Aqua-3M



FCA-2M3LCUSCUP2-3

Typical Performance Data

How to Order

Part Number Configuration:

FCA-2M3LCUSCUP2

-XX

UU

Unit of Measure:

F = Feet

<blank> = Meters

Lengths

Base Number

Example: FCA-2M3LCUSCUP2-12 = 12 meters long cable
FCA-2M3LCUSCUP2-10F = 10 feet long cable

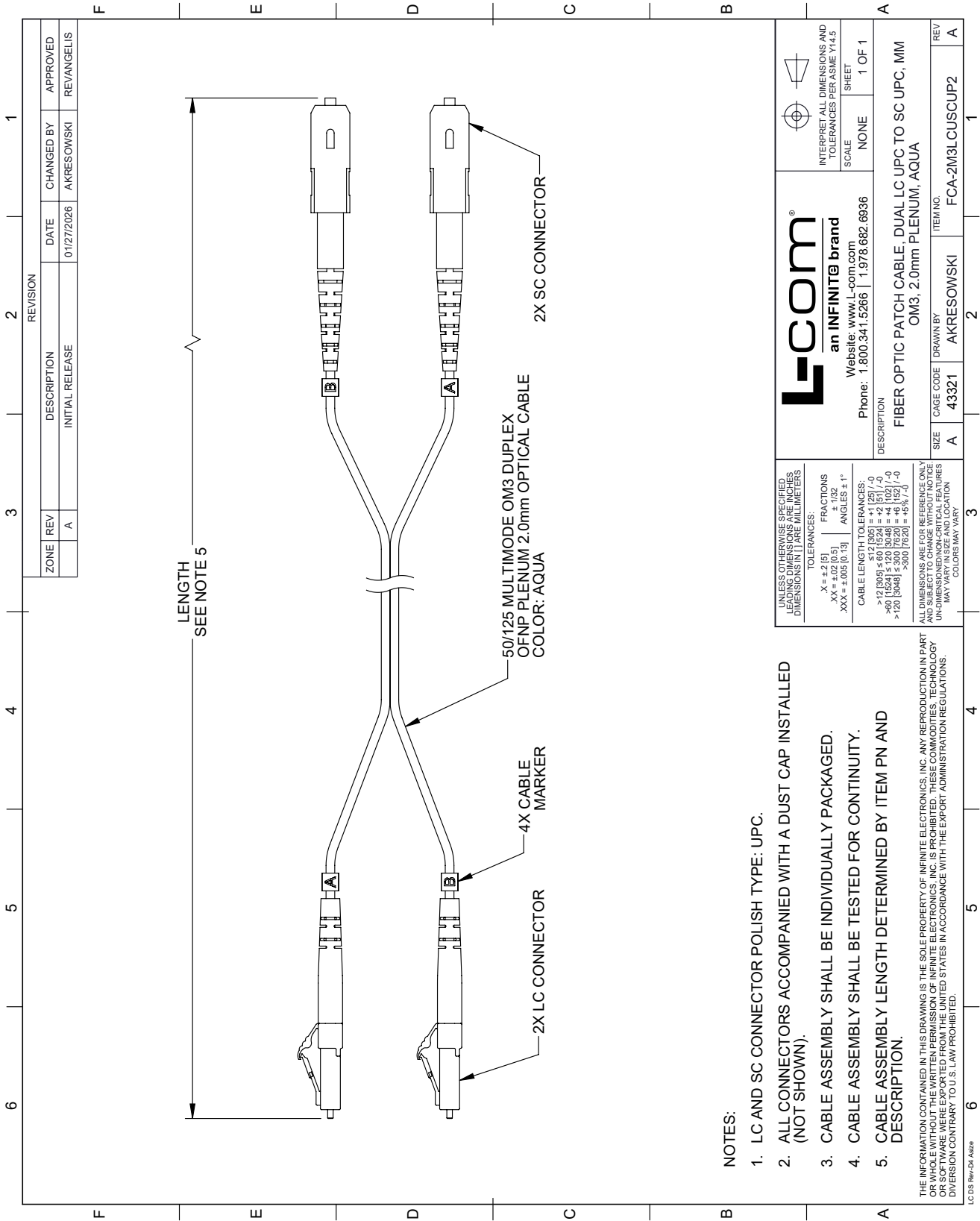
Fiber Optic Patch Cable, Dual LC UPC to SC UPC, MM OM3, 2.0mm Plenum, Aqua-3M from L-com has same day shipment for domestic and International orders. Our portfolio includes coaxial cable assemblies, connectors, adapters and custom products as well as lightning and surge protectors, NEMA rated enclosures, and an RF product line which includes antennas, amplifiers, passive, and active components.

URL: <https://www.l-com.com/fiber-optic-patch-cable-dual-lc-upc-sc-upc-mm-om3-2.0mm-plenum-aqua-3m-fca-2m3lcuscup2-3>

The information contained within this document is accurate to the best of our knowledge and representative of the part described herein. It may be necessary to make modifications to the part and/or the documentation of the part in order to implement improvements. L-com reserves the right to make such changes as required. Unless otherwise stated, all specifications are nominal. L-com does not make any representation or warranty regarding the suitability of the part described herein for any particular purpose, and L-com does not assume liability arising out of the use of any part or document.

FCA-2M3LCUSCUP2-3 CAD Drawing

Fiber Optic Patch Cable, Dual LC UPC to SC UPC, MM OM3, 2.0mm Plenum, Aqua-3M



ZONE		REVISION		APPROVED	
REV	DESCRIPTION	DATE	CHANGED BY	REVANGELIS	
A	INITIAL RELEASE	01/27/2026	AKRESOWSKI		

<p>L-com an INFINITE brand</p> <p>Website: www.l-com.com Phone: 1.800.341.5266 1.978.682.6936</p>	<p>INTERPRET ALL DIMENSIONS AND TOLERANCES PER ASME Y14.5</p> <p>SCALE NONE</p> <p>SHEET 1 OF 1</p>
	<p>DESCRIPTION</p> <p>FIBER OPTIC PATCH CABLE, DUAL LC UPC TO SC UPC, MM OM3, 2.0mm PLENUM, AQUA</p>
<p>UNLESS OTHERWISE SPECIFIED, LEADING DIMENSIONS IN INCHES AND DIMENSIONS IN [] ARE MILLIMETERS</p> <p>TOLERANCES:</p> <p>.X = ±.2 (5) FRACTIONS ± 1/32</p> <p>.XX = ±.02 (0.5) ANGLES ± 1°</p> <p>.XXX = ±.005 (0.13)</p> <p>CABLE LENGTH TOLERANCES:</p> <p>512 (205) = +1 (25) / -0</p> <p>>12 (305) ≤ 60 (1524) = +2 (51) / -0</p> <p>>60 (1524) ≤ 300 (7620) = +6 (152) / -0</p> <p>>300 (7620) = +5% / -0</p>	<p>ITEM NO. FCA-2M3LCUSCUP2</p> <p>REV A</p>

- NOTES:
1. LC AND SC CONNECTOR POLISH TYPE: UPC.
 2. ALL CONNECTORS ACCOMPANIED WITH A DUST CAP INSTALLED (NOT SHOWN).
 3. CABLE ASSEMBLY SHALL BE INDIVIDUALLY PACKAGED.
 4. CABLE ASSEMBLY SHALL BE TESTED FOR CONTINUITY.
 5. CABLE ASSEMBLY LENGTH DETERMINED BY ITEM PN AND DESCRIPTION.

THE INFORMATION CONTAINED IN THIS DRAWING IS THE SOLE PROPERTY OF INFINITE ELECTRONICS, INC. ANY REPRODUCTION IN PART OR WHOLE WITHOUT THE WRITTEN PERMISSION OF INFINITE ELECTRONICS, INC. IS PROHIBITED. THESE COMMODITIES, TECHNOLOGY OR SOFTWARE WERE EXPORTED FROM THE UNITED STATES IN ACCORDANCE WITH THE EXPORT ADMINISTRATION REGULATIONS. DIVERSION CONTRARY TO U.S. LAW PROHIBITED.

LC DS Rev-04 Add