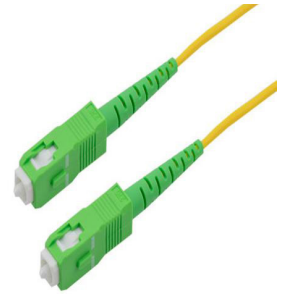


Fiber Optic Patch Cable, Simplex SC APC to SC APC, SM OS2, 2.0mm Riser, Yellow-5M



FCA-1S2SCASCAR2-5

Features

- Single Mode OS2 fiber optic cable assembly
- Simplex SC APC to SC APC
- Indoor Riser (OFNR) cable
- Suitable for ceilings and riser areas
- Custom lengths available with the same fast delivery

Applications

- Telecom & Networking
- Data Centers
- Enterprise and Corporate Networks
- Broadcasting & Media Production
- Military & Defense
- Healthcare & Medical Imaging
- Transportation & Rail
- Oil & Gas

Description

The FCA-1S2SCASCAR2-5 from L-com is a fiber optic patch cable that is equipped with simplex SC/APC to SC/APC connectors. This cable comes with a single mode OS2 fiber that offers stable, high-speed transmission over long distances. Our yellow fiber optic cable assembly has an OFNR-rated PVC jacket.

This 5-meter-long simplex fiber optic cable has a fiber diameter of 9/125 μm and a cable diameter of 2 mm. With an operating temperature range of -20 to 70 degrees C, this cable provides reliable performance across diverse conditions. Our patch cable assembly is suitable for applications such as telecom and networking, data centers, enterprise and corporate networks, broadcasting and media production, military and defense, healthcare and medical imaging, transportation and rail, and oil and gas.

Our fiber optic cable assembly can be customized in different lengths to fit specific installation needs, ensuring efficient network management in high-density setups without compromising delivery time or quality. L-com's FCA-1S2SCASCAR2-5 patch cable has a maximum insertion loss of 0.3 dB. Additional dimensions, specifications, and CAD drawings for this simplex fiber optic cable can be found on its downloadable PDF datasheet.

L-com has one of the largest in-stock selections of single mode OS2 fiber optic cable assemblies for international and domestic orders. We are committed to delivering excellent service to support our customers in maintaining the continuity and reliability of their networks. For further information on similar products, our expert technical support and knowledgeable sales team can help you get the ideal simplex SC/APC to SC/APC patch cable that meets your requirements.

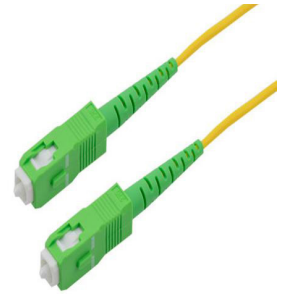
Configuration

Function	Patch
Cable Type	Simplex Single Mode
Mode	Single Mode
Mode Class	OS2
Fiber Diameter	9/125 μm
Connection 1 Type	SC
Connection 1 Polish	APC
Connection 2 Type	SC
Connection 2 Polish	APC
Cable Color	Yellow

Optical Specifications

Description	Minimum	Typical	Maximum	Units
Return Loss - LC, ST, SC, FC	60			dB

Fiber Optic Patch Cable, Simplex SC APC to SC APC, SM OS2, 2.0mm Riser, Yellow-5M



FCA-1S2SCASCAR2-5

Optical Specifications

Description	Minimum	Typical	Maximum	Units
Insertion Loss - LC, ST, SC, FC			0.3	dB

Mechanical Specifications

Cable Assembly

Length	5 m [196.85 in]
Width/Diameter	2 mm
Weight	9.98 g [0.022 lbs]

Cable

Cable Type	Patch
Static Bend Radius	15 mm
Dynamic Bend Radius	30 mm
Max Crush Resistance, Short Term (N/100mm)	200
Max Crush Resistance, Long Term (N/100mm)	50

Connectors

Description	Connector 1	Connector 2
Type	SC	SC
Connector Polish	APC	APC

Environmental Specifications

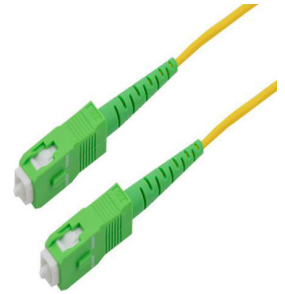
Operating Range Temperature	-20 to +70 deg C
Storage Range Temperature	-40 to +70 deg C
Ingress Protection (IP) Rating	Non-Rated

Compliance Certifications (see [product page](#) for current document)

Plotted and Other Data

Notes:

Fiber Optic Patch Cable, Simplex SC APC to SC APC, SM OS2, 2.0mm Riser, Yellow-5M



FCA-1S2SCASCAR2-5

Typical Performance Data

How to Order

Part Number Configuration:

FCA-1S2SCASCAR2

-XX

UU

Unit of Measure:

F = Feet

<blank> = Meters

Lengths

Base Number

Example: FCA-1S2SCASCAR2-12 = 12 meters long cable
FCA-1S2SCASCAR2-10F = 10 feet long cable

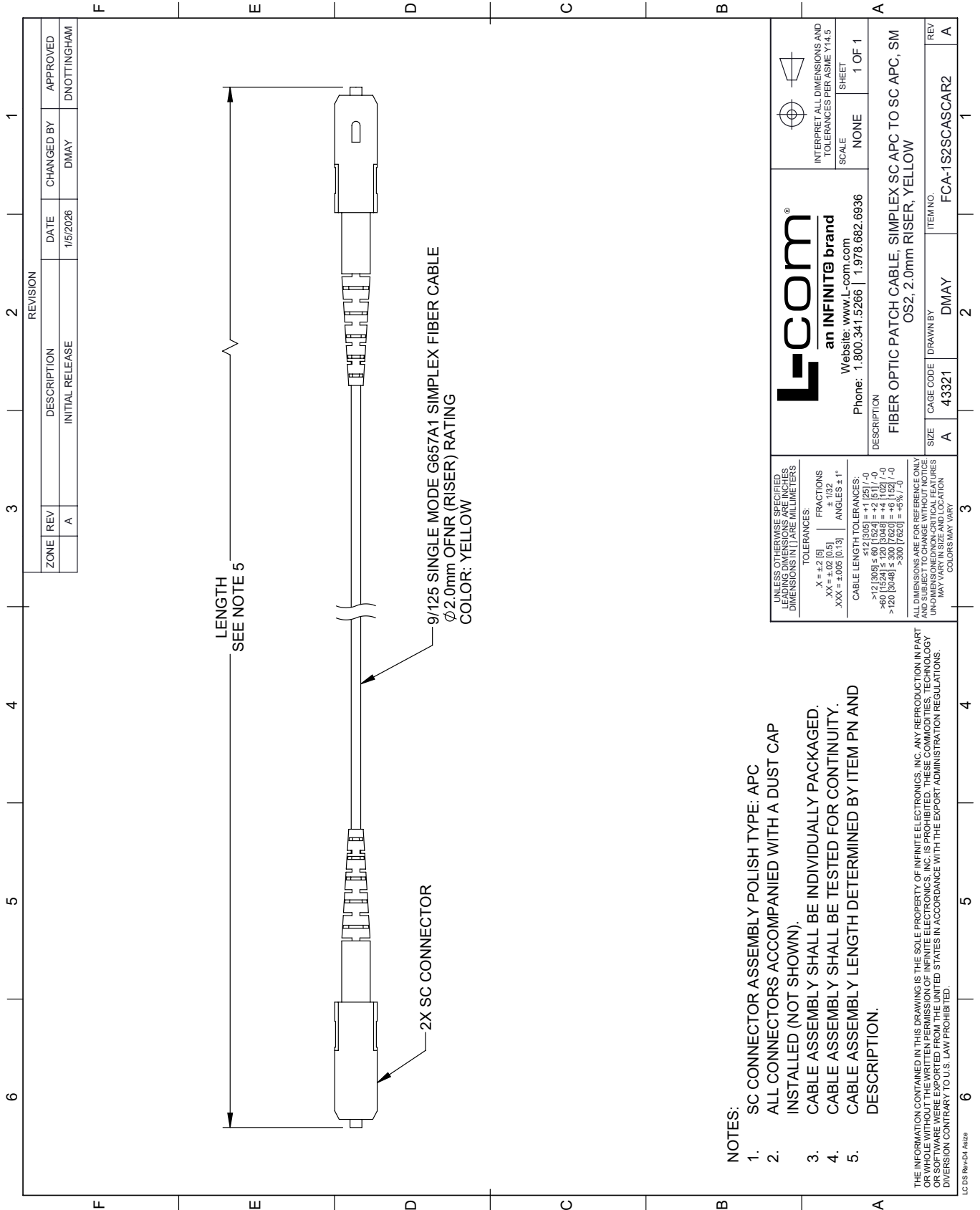
Fiber Optic Patch Cable, Simplex SC APC to SC APC, SM OS2, 2.0mm Riser, Yellow-5M from L-com has same day shipment for domestic and International orders. Our portfolio includes coaxial cable assemblies, connectors, adapters and custom products as well as lightning and surge protectors, NEMA rated enclosures, and an RF product line which includes antennas, amplifiers, passive, and active components.

URL: <https://www.l-com.com/fiber-optic-patch-cable-simplex-sc-apc-sc-apc-sm-os2-2.0mm-riser-yellow-5m-fca-1s2scascar2-5-p.aspx>



The information contained within this document is accurate to the best of our knowledge and representative of the part described herein. It may be necessary to make modifications to the part and/or the documentation of the part in order to implement improvements. L-com reserves the right to make such changes as required. Unless otherwise stated, all specifications are nominal. L-com does not make any representation or warranty regarding the suitability of the part described herein for any particular purpose, and L-com does not assume liability arising out of the use of any part or document.

FCA-1S2SCASCAR2-5 CAD Drawing

Fiber Optic Patch Cable, Simplex SC APC to SC APC, SM OS2, 2.0mm Riser, Yellow-5M



REVISION		DATE	CHANGED BY	APPROVED
ZONE	REV			
	A	1/5/2026	DMAY	DNOTTINGHAM
DESCRIPTION				
INITIAL RELEASE				

 an INFINITE brand Website: www.L-com.com		 INTERPRET ALL DIMENSIONS AND TOLERANCES PER ASME Y14.5
Phone: 1.800.341.5266 1.978.682.6936		SCALE: NONE SHEET: 1 OF 1
DESCRIPTION FIBER OPTIC PATCH CABLE, SIMPLEX SC APC TO SC APC, SM OS2, 2.0mm RISER, YELLOW		
SIZE	CAGE CODE	ITEM NO.
A	43321	FCA-1S2SCASCAR2

UNLESS OTHERWISE SPECIFIED, LEADING DIMENSIONS ARE IN INCHES. DIMENSIONS IN [] ARE MILLIMETERS.

TOLERANCES:
 .X = ±.2 (5)
 .XX = ±.02 (0.5)
 .XXX = ±.005 (0.13)

FRACTIONS
 ± 1/32
 ANGLES ± 1°

CABLE LENGTH TOLERANCES:
 <12 (305) ≤ 60 (1524) = ±.125 (1.28) / -0
 >60 (1524) ≤ 120 (3048) = ±.102 (1.02) / -0
 >120 (3048) ≤ 300 (7620) = ±.152 (1.52) / -0
 >300 (7620) = ±.5 (5) / -0

ALL DIMENSIONS ARE FOR REFERENCE ONLY. UNDIMENSIONED NON-CRITICAL FEATURES MAY VARY IN SIZE AND LOCATION. COLORS MAY VARY.

- NOTES:
- SC CONNECTOR ASSEMBLY POLISH TYPE: APC
 - ALL CONNECTORS ACCOMPANIED WITH A DUST CAP INSTALLED (NOT SHOWN).
 - CABLE ASSEMBLY SHALL BE INDIVIDUALLY PACKAGED.
 - CABLE ASSEMBLY SHALL BE TESTED FOR CONTINUITY.
 - CABLE ASSEMBLY LENGTH DETERMINED BY ITEM PN AND DESCRIPTION.

THE INFORMATION CONTAINED IN THIS DRAWING IS THE SOLE PROPERTY OF INFINITE ELECTRONICS, INC. ANY REPRODUCTION IN PART OR WHOLE WITHOUT THE WRITTEN PERMISSION OF INFINITE ELECTRONICS, INC. IS PROHIBITED. THESE COMMODITIES, TECHNOLOGY OR SOFTWARE WERE EXPORTED FROM THE UNITED STATES IN ACCORDANCE WITH THE EXPORT ADMINISTRATION REGULATIONS. DIVISION CONTRARY TO U.S. LAW PROHIBITED.

LC 05 Rev-D4 A12z