

## Fiber Optic Patch Cable, Simplex SC UPC to SC UPC, MM OM5, 2.0mm Plenum, Lime Green-3M



### FCA-1M5SCUSCUP2-3

#### Features

- Multimode OM5 fiber optic cable assembly
- Simplex SC UPC to SC UPC
- Indoor Plenum (OFNP) cable
- Suitable for wall, ceiling, conduits, and between buildings
- Custom lengths available with the same fast delivery

#### Applications

- Telecom & Networking
- Data Centers
- Enterprise and Corporate Networks
- Broadcasting & Media Production
- Military & Defense
- Healthcare & Medical Imaging
- Transportation & Rail
- Oil & Gas

#### Description

The FCA-1M5SCUSCUP2-3 from L-com is a fiber optic patch cable that is equipped with simplex SC/UPC to SC/UPC connectors. As an OM5 fiber optic jumper, this patch cable assembly is designed for ultra-high-speed, high-bandwidth data transmission, supporting greater distances and faster speeds than OM3 and OM4 fiber. Our lime green fiber optic cable assembly has an OFNP-rated PVC jacket.

This 3-meter-long simplex fiber optic cable has a fiber diameter of 50/125  $\mu\text{m}$  and a cable diameter of 2 mm. With an operating temperature range of 0 to 60 degrees C, this cable provides reliable performance across diverse conditions. Our patch cable assembly is suitable for applications such as telecom and networking, data centers, enterprise and corporate networks, broadcasting and media production, military and defense, healthcare and medical imaging, transportation and rail, and oil and gas.

Our fiber optic cable assembly can be customized in different lengths to fit specific installation needs, ensuring efficient network management in high-density setups without compromising delivery time or quality. L-com's FCA-1M5SCUSCUP2-3 patch cable has a maximum insertion loss of 0.3 dB. Additional dimensions, specifications, and CAD drawings for this simplex fiber optic cable can be found on its downloadable PDF datasheet.

L-com has one of the largest in-stock selections of multimode OM5 fiber optic cable assemblies for international and domestic orders. We are committed to delivering excellent service to support our customers in maintaining the continuity and reliability of their networks. For further information on similar products, our expert technical support and knowledgeable sales team can help you get the ideal simplex SC/UPC to SC/UPC patch cable that meets your requirements.

#### Configuration

Function	Patch
Cable Type	Simplex Multimode
Mode	Multimode
Mode Class	OM5
Fiber Diameter	50/125 $\mu\text{m}$
Connection 1 Type	SC
Connection 1 Polish	UPC
Connection 2 Type	SC
Connection 2 Polish	UPC
Cable Color	Lime Green

#### Optical Specifications

Description	Minimum	Typical	Maximum	Units
Return Loss - LC, ST, SC, FC	30			dB

Fiber Optic Patch Cable, Simplex SC UPC to SC UPC, MM OM5, 2.0mm Plenum, Lime Green-3M



## FCA-1M5SCUSCUP2-3

### Optical Specifications

Description	Minimum	Typical	Maximum	Units
Insertion Loss - LC, ST, SC, FC			0.3	dB

### Mechanical Specifications

#### Cable Assembly

Length	3 m [118.11 in]
Width/Diameter	2 mm
Weight	8.16 g [0.018 lbs]

#### Cable

Cable Type	Patch
Static Bend Radius	15 mm
Dynamic Bend Radius	30 mm
Max Crush Resistance, Short Term (N/100mm)	200
Max Crush Resistance, Long Term (N/100mm)	50

### Connectors

Description	Connector 1	Connector 2
Type	SC	SC
Connector Polish	UPC	UPC

### Environmental Specifications

Operating Range Temperature	0 to +60 deg C
Storage Range Temperature	-20 to +60 deg C
Ingress Protection (IP) Rating	Non-Rated

**Compliance Certifications** (see [product page](#) for current document)

### Plotted and Other Data

Notes:

Fiber Optic Patch Cable, Simplex SC UPC to SC UPC, MM OM5, 2.0mm Plenum, Lime Green-3M



## FCA-1M5SCUSCUP2-3

### Typical Performance Data

### How to Order

Part Number Configuration:

**FCA-1M5SCUSCUP2**

**-XX**

**UU**

Unit of Measure:

F = Feet

<blank> = Meters

Lengths

Base Number

Example: FCA-1M5SCUSCUP2-12 = 12 meters long cable  
FCA-1M5SCUSCUP2-10F = 10 feet long cable

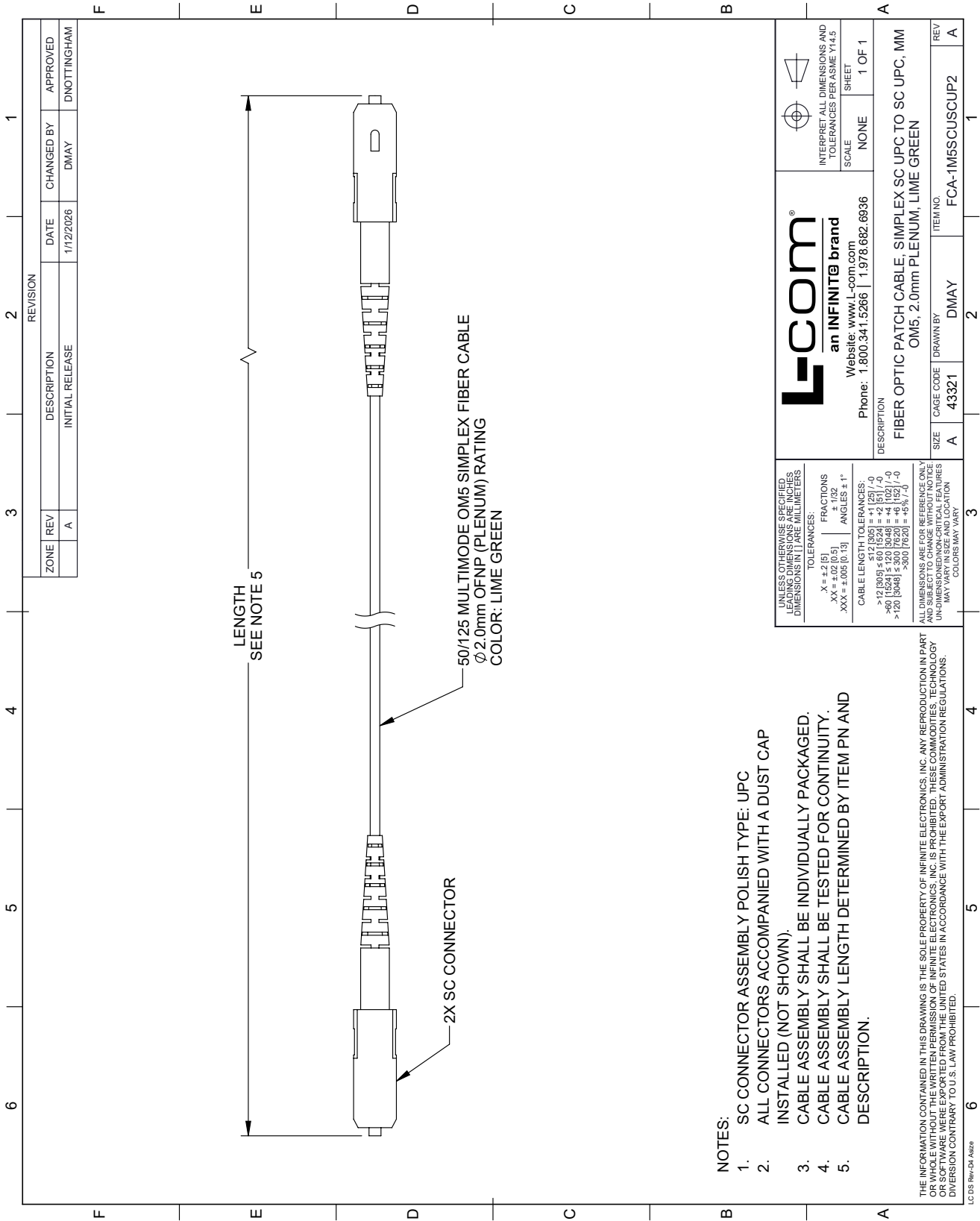
Fiber Optic Patch Cable, Simplex SC UPC to SC UPC, MM OM5, 2.0mm Plenum, Lime Green-3M from L-com has same day shipment for domestic and International orders. Our portfolio includes coaxial cable assemblies, connectors, adapters and custom products as well as lightning and surge protectors, NEMA rated enclosures, and an RF product line which includes antennas, amplifiers, passive, and active components.

URL: <https://www.l-com.com/fiber-optic-patch-cable-simplex-sc-upc-sc-upc-mm-om5-2.0mm-plenum-lime-green-3m-fca-1m5scuscup2-3-p.aspx>

The information contained within this document is accurate to the best of our knowledge and representative of the part described herein. It may be necessary to make modifications to the part and/or the documentation of the part in order to implement improvements. L-com reserves the right to make such changes as required. Unless otherwise stated, all specifications are nominal. L-com does not make any representation or warranty regarding the suitability of the part described herein for any particular purpose, and L-com does not assume liability arising out of the use of any part or document.

# FCA-1M5SCUSCUP2-3 CAD Drawing

Fiber Optic Patch Cable, Simplex SC UPC to SC UPC, MM OM5, 2.0mm Plenum, Lime Green-3M



ZONE		REVISION		CHANGED BY		APPROVED	
REV	DESCRIPTION	DATE	INITIAL RELEASE	DATE	DMAY	DATE	DMOTTINGHAM
A		1/12/2026					

**NOTES:**

1. SC CONNECTOR ASSEMBLY POLISH TYPE: UPC
2. ALL CONNECTORS ACCOMPANIED WITH A DUST CAP INSTALLED (NOT SHOWN).
3. CABLE ASSEMBLY SHALL BE INDIVIDUALLY PACKAGED.
4. CABLE ASSEMBLY SHALL BE TESTED FOR CONTINUITY.
5. CABLE ASSEMBLY LENGTH DETERMINED BY ITEM PN AND DESCRIPTION.

UNLESS OTHERWISE SPECIFIED, LEADING DIMENSIONS ARE IN INCHES. DIMENSIONS IN [ ] ARE MILLIMETERS.	TOLERANCES: .X = ±.2 [5] .XX = ±.02 [0.5] .XXX = ±.005 [0.13]	FRACTIONS ± 1/32 ANGLES ± 1°	SCALE NONE	SHEET 1 OF 1
--	--	------------------------------------	---------------	-----------------

**L-com**  
 an INFINITE brand  
 Website: [www.L-com.com](http://www.L-com.com)  
 Phone: 1.800.341.5266 | 1.978.682.6936

INTERPRET ALL DIMENSIONS AND TOLERANCES PER ASME Y14.5

DESCRIPTION  
 FIBER OPTIC PATCH CABLE, SIMPLEX SC UPC TO SC UPC, MM OM5, 2.0mm PLENUM, LIME GREEN

REV	DESCRIPTION	DATE	ITEM NO.
A		DMAY	FCA-1M5SCUSCUP2

ALL DIMENSIONS ARE FOR REFERENCE ONLY AND SUBJECT TO CHANGE WITHOUT NOTICE UNLESS OTHERWISE SPECIFIED. CRITICAL FEATURES MAY VARY. COLORS MAY VARY.

LC DS Rev-04 Add