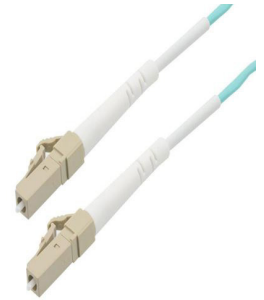


Fiber Optic Patch Cable, Simplex LC UPC to LC UPC, MM OM4, 2.0mm LSZH, Aqua-5M



FCA-1M4LCULCUZ2-5

Features

- OM4 multimode fiber optic cable assembly
- Simplex LC/UPC to Simplex LC/UPC
- 2.0mm LSZH (low smoke zero halogen) rated cable for indoor applications
- Custom lengths available with the same fast delivery.

Applications

- Telecom & Networking
- Data Centers
- Enterprise and Corporate Networks
- Broadcasting & Media Production
- Military & Defense
- Healthcare & Medical Imaging
- Transportation & Rail
- Oil & Gas

Description

The L-com FCA-1M4LCULCUZ2-5 is a fiber optic patch cable assembly that is equipped with simplex LC/UPC to LC/UPC connectors. As an OM4 fiber optic jumper, this patch cable assembly is designed for ultra-high-speed, high-bandwidth data transmission, supporting greater distances and faster speeds than OM1 and OM3 fiber. The aqua blue fiber optic cable assembly has an LSZH-rated PE jacket and a cable length of 5 meters.

Our fiber optic cable can be customized in different lengths to fit specific installation needs, ensuring efficient network management in high-density setups without compromising delivery time or quality. L-com's FCA-1M4LCULCUZ2-5 patch cable has a maximum insertion loss of 0.3 dB. With an operating temperature range of -20 to 70 degrees C, this cable assembly provides reliable performance across diverse conditions.

This fiber optic cable from L-com is suitable for applications such as telecom and networking, data centers, enterprise and corporate networks, broadcasting and media production, military and defense, healthcare and medical imaging, transportation and rail, and oil and gas. Our patch cable comes with a fiber diameter of 50/125 μm and a cable diameter of 2 mm. Additional dimensions, specifications, and CAD drawings for this FCA-1M4LCULCUZ2-5 fiber optic cord can be found on its downloadable PDF datasheet.

L-com has one of the largest in-stock selections of simplex LC/UPC to LC/UPC fiber optic patch cords for international and domestic orders. We are committed to delivering excellent service to support our customers in maintaining the continuity and reliability of their networks. For further information on similar products, our expert technical support and knowledgeable sales team can help you get the ideal OM4 multimode fiber optic cable that meets your requirements.

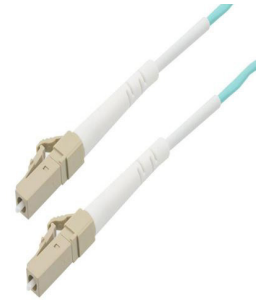
Configuration

Function	Patch
Cable Type	Simplex Multimode
Mode	Multimode
Mode Class	OM4
Fiber Diameter	50/125 μm
Connection 1 Type	LC
Connection 1 Polish	UPC
Connection 2 Type	LC
Connection 2 Polish	UPC
Cable Color	Aqua Blue

Optical Specifications

Description	Minimum	Typical	Maximum	Units
Return Loss - LC, ST, SC, FC	30			dB

Fiber Optic Patch Cable, Simplex LC UPC to LC UPC, MM OM4, 2.0mm LSZH, Aqua-5M



FCA-1M4LCULCUZ2-5

Optical Specifications

Description	Minimum	Typical	Maximum	Units
Insertion Loss - LC, ST, SC, FC			0.3	dB

Mechanical Specifications

Cable Assembly

Length	5 m [196.85 in]
Width/Diameter	2 mm
Weight	7.26 g [0.016 lbs]

Cable

Cable Type	Patch
Static Bend Radius	15 mm
Dynamic Bend Radius	30 mm
Max Crush Resistance, Short Term (N/100mm)	200
Max Crush Resistance, Long Term (N/100mm)	50

Connectors

Description	Connector 1	Connector 2
Type	LC	LC
Connector Polish	UPC	UPC

Environmental Specifications

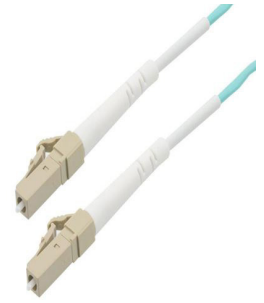
Operating Range Temperature	-20 to +70 deg C
Storage Range Temperature	-40 to +70 deg C
Ingress Protection (IP) Rating	Non-Rated

Compliance Certifications (see [product page](#) for current document)

Plotted and Other Data

Notes:

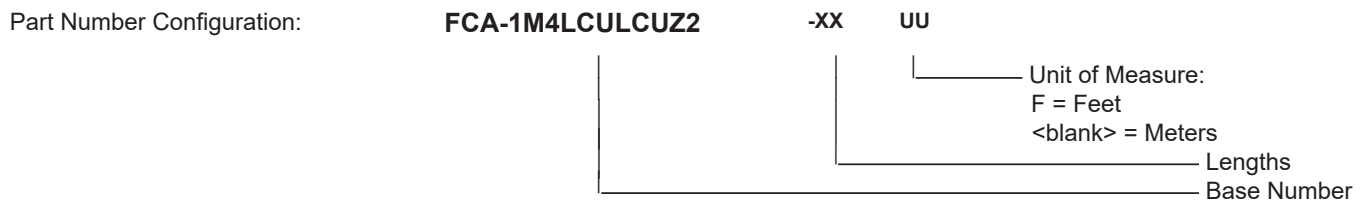
Fiber Optic Patch Cable, Simplex LC UPC to LC UPC, MM OM4, 2.0mm LSZH, Aqua-5M



FCA-1M4LCULCUZ2-5

Typical Performance Data

How to Order



Example: FCA-1M4LCULCUZ2-12 = 12 meters long cable
FCA-1M4LCULCUZ2-10F = 10 feet long cable

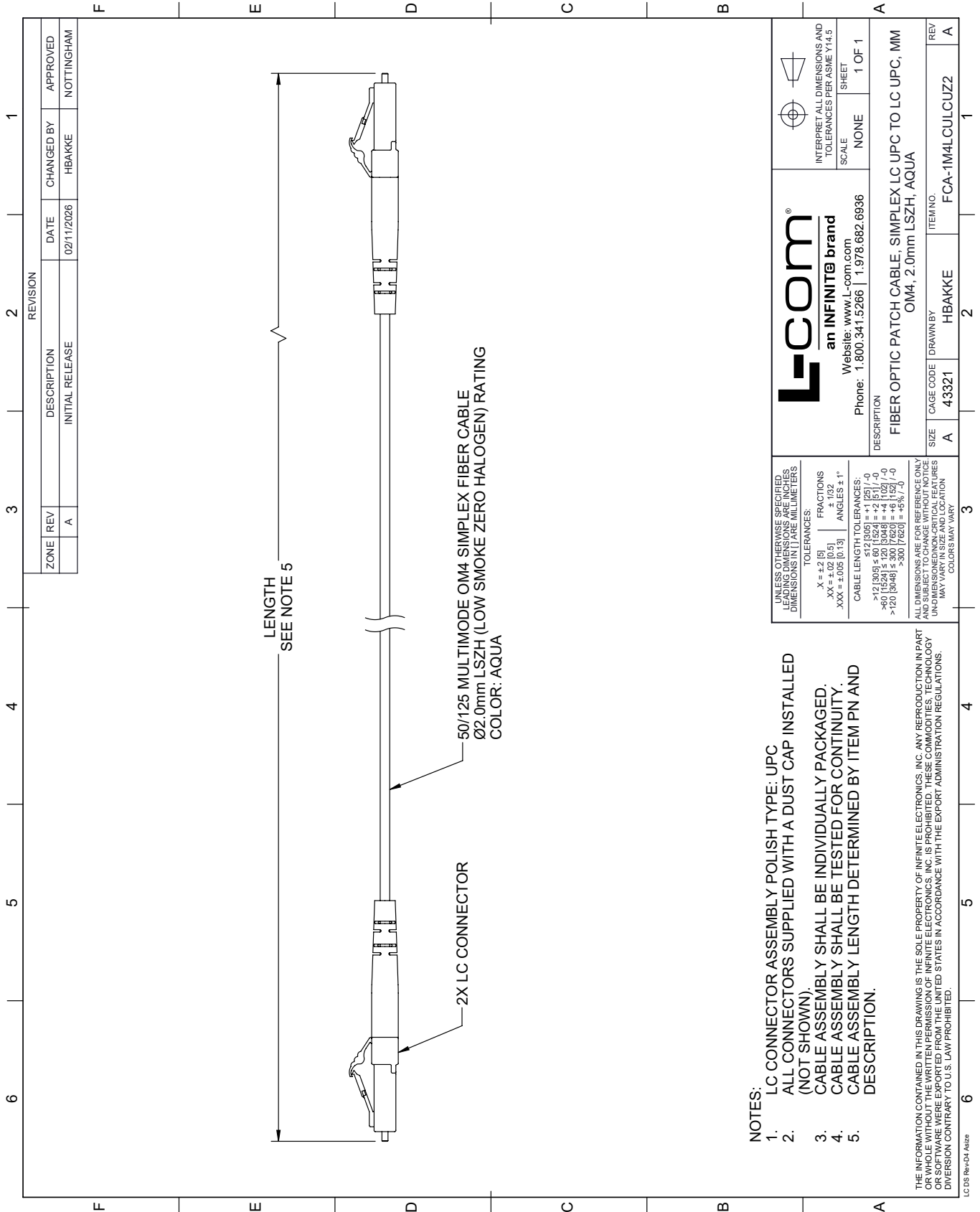
Fiber Optic Patch Cable, Simplex LC UPC to LC UPC, MM OM4, 2.0mm LSZH, Aqua-5M from L-com has same day shipment for domestic and International orders. Our portfolio includes coaxial cable assemblies, connectors, adapters and custom products as well as lightning and surge protectors, NEMA rated enclosures, and an RF product line which includes antennas, amplifiers, passive, and active components.

URL: <https://www.l-com.com/fiber-optic-patch-cable-simplex-lc-upc-lc-upc-mm-om4-2.0mm-lszh-aqua-5m-fca-1m4lculcuz2-5>

The information contained within this document is accurate to the best of our knowledge and representative of the part described herein. It may be necessary to make modifications to the part and/or the documentation of the part in order to implement improvements. L-com reserves the right to make such changes as required. Unless otherwise stated, all specifications are nominal. L-com does not make any representation or warranty regarding the suitability of the part described herein for any particular purpose, and L-com does not assume liability arising out of the use of any part or document.

FCA-1M4LCULCUZ2-5 CAD Drawing

Fiber Optic Patch Cable, Simplex LC UPC to LC UPC, MM OM4, 2.0mm LSZH, Aqua-5M



L-com
an INFINITE brand
Website: www.L-com.com
Phone: 1.800.341.5266 | 1.978.682.6936

INTERPRET ALL DIMENSIONS AND TOLERANCES PER ASME Y14.5
SCALE: NONE
SHEET: 1 OF 1

DESCRIPTION: FIBER OPTIC PATCH CABLE, SIMPLEX LC UPC TO LC UPC, MM OM4, 2.0mm LSZH, AQUA

SIZE	A	CAGE CODE	43321	DRAWN BY	HBAKKE	ITEM NO.	FCA-1M4LCULCUZ2
REV	A						