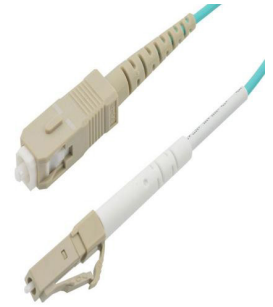


Fiber Optic Patch Cable, Simplex LC UPC to SC UPC, MM OM3, 2.0mm Plenum, Aqua-3M



**FCA-1M3LCUSCUP2-3**

**Features**

- OM3 multimode fiber optic cable assembly
- Simplex LC/UPC to Simplex SC/UPC
- 2.0mm Plenum rated cable for indoor applications
- Custom lengths available with the same fast delivery.

**Applications**

- Telecom & Networking
- Data Centers
- Enterprise and Corporate Networks
- Broadcasting & Media Production
- Military & Defense
- Healthcare & Medical Imaging
- Transportation & Rail
- Oil & Gas

**Description**

The L-com FCA-1M3LCUSCUP2-3 is a fiber optic patch cable assembly that is equipped with simplex LC/UPC to SC/UPC connectors. As an OM3 fiber optic jumper, this patch cable assembly is optimized for high-speed, high-bandwidth data transfer, supporting faster, longer-distance connectivity compared to OM1 fiber. The aqua blue fiber optic cable assembly has an OFNP-rated PVC jacket and a cable length of 3 meters.

Our fiber optic cable can be customized in different lengths to fit specific installation needs, ensuring efficient network management in high-density setups without compromising delivery time or quality. L-com's FCA-1M3LCUSCUP2-3 patch cable has a maximum insertion loss of 0.3 dB. With an operating temperature range of 0 to 60 degrees C, this cable assembly provides reliable performance across diverse conditions.

This fiber optic cable from L-com is suitable for applications such as telecom and networking, data centers, enterprise and corporate networks, broadcasting and media production, military and defense, healthcare and medical imaging, transportation and rail, and oil and gas. Our patch cable comes with a fiber diameter of 50/125 μm and a cable diameter of 2 mm. Additional dimensions, specifications, and CAD drawings for this FCA-1M3LCUSCUP2-3 fiber optic cord can be found on its downloadable PDF datasheet.

L-com has one of the largest in-stock selections of simplex LC/UPC to SC/UPC fiber optic patch cords for international and domestic orders. We are committed to delivering excellent service to support our customers in maintaining the continuity and reliability of their networks. For further information on similar products, our expert technical support and knowledgeable sales team can help you get the ideal OM3 multimode fiber optic cable that meets your requirements.

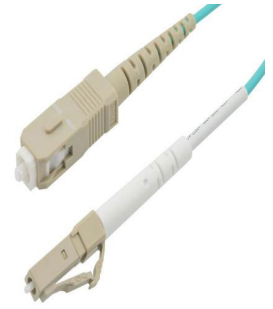
**Configuration**

Function	Patch
Cable Type	Simplex Multimode
Mode	Multimode
Mode Class	OM3
Fiber Diameter	50/125 μm
Connection 1 Type	LC
Connection 1 Polish	UPC
Connection 2 Type	SC
Connection 2 Polish	UPC
Cable Color	Aqua Blue

**Optical Specifications**

Description	Minimum	Typical	Maximum	Units
Return Loss - LC, ST, SC, FC	30			dB

Fiber Optic Patch Cable, Simplex LC UPC to SC  
UPC, MM OM3, 2.0mm Plenum, Aqua-3M



## FCA-1M3LCUSCUP2-3

### Optical Specifications

Description	Minimum	Typical	Maximum	Units
Insertion Loss - LC, ST, SC, FC			0.3	dB

### Mechanical Specifications

#### Cable Assembly

Length	3 m [118.11 in]
Width/Diameter	2 mm
Weight	6.8 g [0.015 lbs]

#### Cable

Cable Type	Patch
Static Bend Radius	15 mm
Dynamic Bend Radius	30 mm
Max Crush Resistance, Short Term (N/100mm)	200
Max Crush Resistance, Long Term (N/100mm)	50

### Connectors

Description	Connector 1	Connector 2
Type	LC	SC
Connector Polish	UPC	UPC

### Environmental Specifications

Operating Range Temperature	0 to +60 deg C
Storage Range Temperature	-20 to +60 deg C
Ingress Protection (IP) Rating	Non-Rated

**Compliance Certifications** (see [product page](#) for current document)

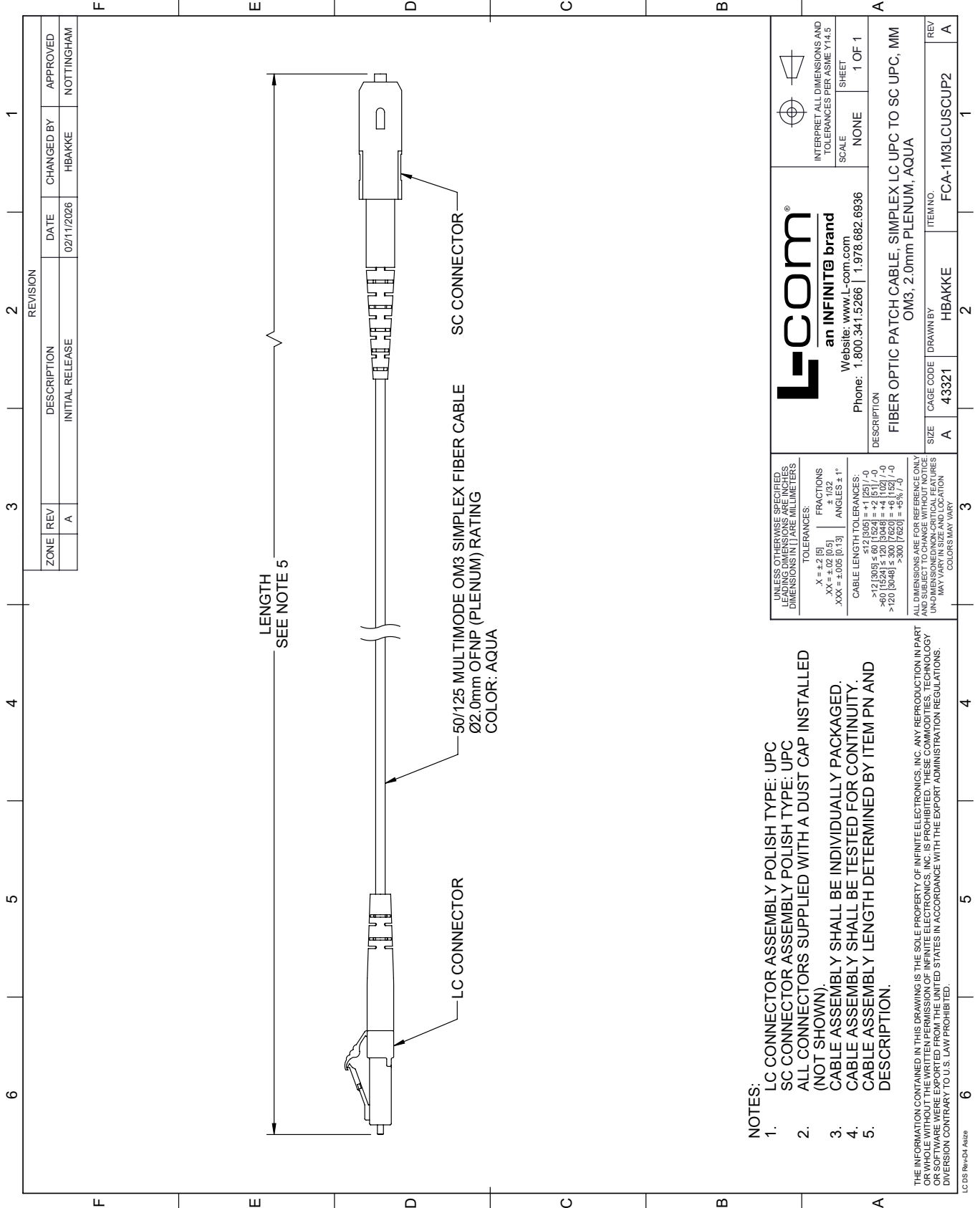
### Plotted and Other Data

Notes:



# FCA-1M3LCUSCUP2-3 CAD Drawing

Fiber Optic Patch Cable, Simplex LC UPC to SC UPC, MM OM3, 2.0mm Plenum, Aqua-3M



REVISION		DATE	CHANGED BY	APPROVED	
ZONE	REV	DESCRIPTION	DATE	CHANGED BY	APPROVED
	A	INITIAL RELEASE	02/11/2026	HBAKKE	NOTTINGHAM

- NOTES:**
- LC CONNECTOR ASSEMBLY POLISH TYPE: UPC
  - SC CONNECTOR ASSEMBLY POLISH TYPE: UPC
  - ALL CONNECTORS SUPPLIED WITH A DUST CAP INSTALLED (NOT SHOWN).
  - CABLE ASSEMBLY SHALL BE INDIVIDUALLY PACKAGED.
  - CABLE ASSEMBLY SHALL BE TESTED FOR CONTINUITY.
  - CABLE ASSEMBLY LENGTH DETERMINED BY ITEM PN AND DESCRIPTION.

THE INFORMATION CONTAINED IN THIS DRAWING IS THE SOLE PROPERTY OF INFINITE ELECTRONICS, INC. ANY REPRODUCTION IN PART OR WHOLE WITHOUT THE WRITTEN PERMISSION OF INFINITE ELECTRONICS, INC. IS PROHIBITED. THESE COMMODITIES, TECHNOLOGY OR SOFTWARE WERE EXPORTED FROM THE UNITED STATES IN ACCORDANCE WITH THE EXPORT ADMINISTRATION REGULATIONS. DIVERSION CONTRARY TO U.S. LAW PROHIBITED.

<p><b>L-com</b> an INFINITE brand</p> <p>Website: <a href="http://www.L-com.com">www.L-com.com</a> Phone: 1.800.341.5266   1.978.682.6936</p>		<p>INTERPRET ALL DIMENSIONS AND TOLERANCES PER ASME Y14.5</p> <p>SCALE: NONE</p> <p>SHEET: 1 OF 1</p>
<p>DESCRIPTION: FIBER OPTIC PATCH CABLE, SIMPLEX LC UPC TO SC UPC, MM OM3, 2.0mm PLENUM, AQUA</p>		
<p>UNLESS OTHERWISE SPECIFIED, DIMENSIONS ARE IN INCHES. DIMENSIONS IN [ ] ARE MILLIMETERS.</p> <p>TOLERANCES:          .X = ±.2 [5]          .XX = ±.02 [0.5]          .XXX = ±.005 [0.13]</p> <p>FRACTIONS: ± 1/32</p> <p>ANGLES: ± 1°</p> <p>CABLE LENGTH TOLERANCES:          &gt;12 [305] ≤ 60 [1524] = ±1 [25] / -0          &gt;60 [1524] ≤ 120 [3048] = ±4 [102] / -0          &gt;120 [3048] ≤ 300 [7620] = ±1 [25] / -0          &gt;300 [7620] = ±5 [127] / -0</p> <p>ALL DIMENSIONS ARE FOR REFERENCE ONLY. DIMENSIONS OF NON-CRITICAL FEATURES MAY VARY IN SIZE AND LOCATION. COLORS MAY VARY.</p>	<p>ITEM NO. FCA-1M3LCUSCUP2</p> <p>SIZE A</p> <p>CAGE CODE 43321</p> <p>DRAWN BY HBAKKE</p>	<p>REV A</p>