

Fiber Optic Patch Cable, Simplex LC UPC to SC UPC, MM OM1, 2.0mm Plenum, Orange-5M



**FCA-1M1LCUSCUP2-5**

**Features**

- OM1 multimode fiber optic cable assembly
- Simplex LC/UPC to Simplex SC/UPC
- 2.0mm Plenum rated cable for indoor applications
- Custom lengths available with the same fast delivery.

**Applications**

- Telecom & Networking
- Data Centers
- Enterprise and Corporate Networks
- Broadcasting & Media Production
- Military & Defense
- Healthcare & Medical Imaging
- Transportation & Rail
- Oil & Gas

**Description**

The L-com FCA-1M1LCUSCUP2-5 is a fiber optic patch cable assembly that is equipped with simplex LC/UPC to SC/UPC connectors. This cable assembly comes with a multimode OM1 fiber that offers stable, high-speed transmission over short distances. The orange fiber optic cable assembly has an OFNP-rated PVC jacket and a cable length of 5 meters.

Our fiber optic cable can be customized in different lengths to fit specific installation needs, ensuring efficient network management in high-density setups without compromising delivery time or quality. L-com's FCA-1M1LCUSCUP2-5 patch cable has a maximum insertion loss of 0.3 dB. With an operating temperature range of 0 to 60 degrees C, this cable assembly provides reliable performance across diverse conditions.

This fiber optic cable from L-com is suitable for applications such as telecom and networking, data centers, enterprise and corporate networks, broadcasting and media production, military and defense, healthcare and medical imaging, transportation and rail, and oil and gas. Our patch cable comes with a fiber diameter of 62.5/125 µm and a cable diameter of 2 mm. Additional dimensions, specifications, and CAD drawings for this FCA-1M1LCUSCUP2-5 fiber optic cord can be found on its downloadable PDF datasheet.

L-com has one of the largest in-stock selections of simplex LC/UPC to SC/UPC fiber optic patch cords for international and domestic orders. We are committed to delivering excellent service to support our customers in maintaining the continuity and reliability of their networks. For further information on similar products, our expert technical support and knowledgeable sales team can help you get the ideal OM1 multimode fiber optic cable that meets your requirements.

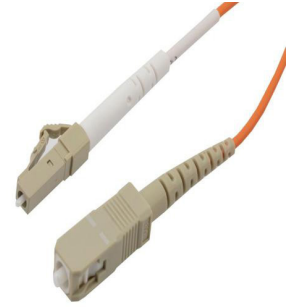
**Configuration**

Function	Patch
Cable Type	Simplex Multimode
Mode	Multimode
Mode Class	OM1
Fiber Diameter	62.5/125 µm
Connection 1 Type	LC
Connection 1 Polish	UPC
Connection 2 Type	SC
Connection 2 Polish	UPC
Cable Color	Orange

**Optical Specifications**

Description	Minimum	Typical	Maximum	Units
Return Loss - LC, ST, SC, FC	30			dB

Fiber Optic Patch Cable, Simplex LC UPC to SC  
UPC, MM OM1, 2.0mm Plenum, Orange-5M



## FCA-1M1LCUSCUP2-5

### Optical Specifications

Description	Minimum	Typical	Maximum	Units
Insertion Loss - LC, ST, SC, FC			0.3	dB

### Mechanical Specifications

#### Cable Assembly

Length	5 m [196.85 in]
Width/Diameter	2 mm
Weight	8.62 g [0.019 lbs]

#### Cable

Cable Type	Patch
Static Bend Radius	20 mm
Dynamic Bend Radius	40 mm
Max Crush Resistance, Short Term (N/100mm)	200
Max Crush Resistance, Long Term (N/100mm)	50

### Connectors

Description	Connector 1	Connector 2
Type	LC	SC
Connector Polish	UPC	UPC

### Environmental Specifications

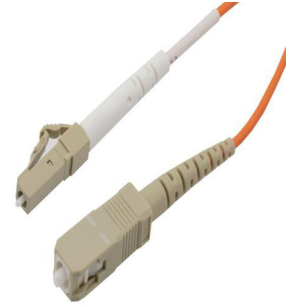
Operating Range Temperature	0 to +60 deg C
Storage Range Temperature	-20 to +60 deg C
Ingress Protection (IP) Rating	Non-Rated

**Compliance Certifications** (see [product page](#) for current document)

### Plotted and Other Data

Notes:

Fiber Optic Patch Cable, Simplex LC UPC to SC UPC, MM OM1, 2.0mm Plenum, Orange-5M



## FCA-1M1LCUSCUP2-5

### Typical Performance Data

### How to Order

Part Number Configuration:

**FCA-1M1LCUSCUP2**

**-XX**

**UU**

Unit of Measure:

F = Feet

<blank> = Meters

Lengths

Base Number

Example: FCA-1M1LCUSCUP2-12 = 12 meters long cable  
FCA-1M1LCUSCUP2-10F = 10 feet long cable

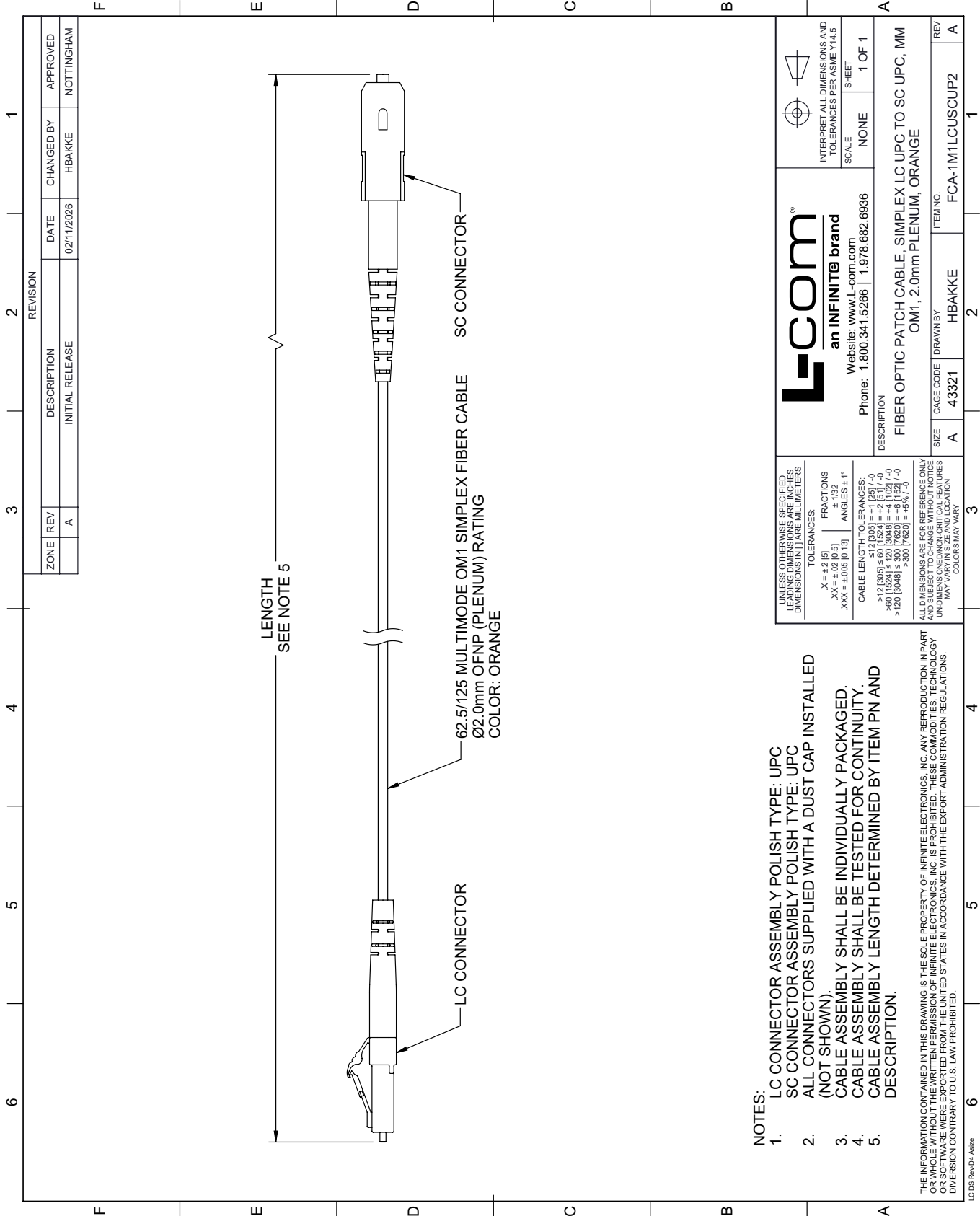
Fiber Optic Patch Cable, Simplex LC UPC to SC UPC, MM OM1, 2.0mm Plenum, Orange-5M from L-com has same day shipment for domestic and International orders. Our portfolio includes coaxial cable assemblies, connectors, adapters and custom products as well as lightning and surge protectors, NEMA rated enclosures, and an RF product line which includes antennas, amplifiers, passive, and active components.

URL: <https://www.l-com.com/fiber-optic-patch-cable-simplex-lc-upc-sc-upc-mm-om1-2.0mm-plenum-orange-5m-fca-1m1lcuscup2-5>

The information contained within this document is accurate to the best of our knowledge and representative of the part described herein. It may be necessary to make modifications to the part and/or the documentation of the part in order to implement improvements. L-com reserves the right to make such changes as required. Unless otherwise stated, all specifications are nominal. L-com does not make any representation or warranty regarding the suitability of the part described herein for any particular purpose, and L-com does not assume liability arising out of the use of any part or document.

# FCA-1M1LCUSCUP2-5 CAD Drawing

Fiber Optic Patch Cable, Simplex LC UPC to SC UPC, MM OM1, 2.0mm Plenum, Orange-5M



REVISION		DATE	CHANGED BY	APPROVED
ZONE	REV			
	A	02/11/2026	HBAKKE	NOTTINGHAM
DESCRIPTION				
INITIAL RELEASE				

 <b>an INFINITE brand</b> Website: www.L-com.com		 INTERPRET ALL DIMENSIONS AND TOLERANCES PER ASME Y14.5
Phone: 1.800.341.5266   1.978.682.6936		SCALE: NONE SHEET: 1 OF 1
DESCRIPTION: FIBER OPTIC PATCH CABLE, SIMPLEX LC UPC TO SC UPC, MM OM1, 2.0mm PLENUM, ORANGE		
SIZE	CAGE CODE	ITEM NO.
A	43321	FCA-1M1LCUSCUP2

UNLESS OTHERWISE SPECIFIED, LEADING DIMENSIONS ARE IN INCHES. DIMENSIONS IN [ ] ARE MILLIMETERS.

TOLERANCES:  
 .X = ±.2 [5]  
 .XX = ±.02 [0.5]  
 .XXX = ±.005 [0.13]

FRACTIONS: ± 1/32  
 ANGLES ± 1°

CABLE LENGTH TOLERANCES:  
 >12 [305] ≤ 60 [1524] = ±1 [25] / -0  
 >60 [1524] ≤ 120 [3048] = ±4 [102] / -0  
 >120 [3048] ≤ 300 [7620] = ±1 [25] / -0  
 >300 [7620] = ±5 [127] / -0

ALL DIMENSIONS ARE FOR REFERENCE ONLY. DIMENSIONS OF CRITICAL FEATURES MAY VARY IN SIZE AND LOCATION. COLORS MAY VARY.

- NOTES:
- LC CONNECTOR ASSEMBLY POLISH TYPE: UPC
  - SC CONNECTOR ASSEMBLY POLISH TYPE: UPC
  - ALL CONNECTORS SUPPLIED WITH A DUST CAP INSTALLED (NOT SHOWN).
  - CABLE ASSEMBLY SHALL BE INDIVIDUALLY PACKAGED.
  - CABLE ASSEMBLY SHALL BE TESTED FOR CONTINUITY. CABLE ASSEMBLY LENGTH DETERMINED BY ITEM PN AND DESCRIPTION.

THE INFORMATION CONTAINED IN THIS DRAWING IS THE SOLE PROPERTY OF INFINITE ELECTRONICS, INC. ANY REPRODUCTION IN PART OR WHOLE WITHOUT THE WRITTEN PERMISSION OF INFINITE ELECTRONICS, INC. IS PROHIBITED. THESE COMMODITIES, TECHNOLOGY OR SOFTWARE WERE EXPORTED FROM THE UNITED STATES IN ACCORDANCE WITH THE EXPORT ADMINISTRATION REGULATIONS. DIVERSION CONTRARY TO U.S. LAW PROHIBITED.

LC 05 Rev-D4 A126