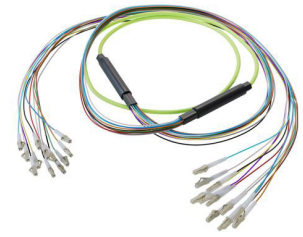


## 12-Fiber LC UPC to LC UPC, OM5 Multimode Distribution Cable, 6.2mm Riser, 2.0mm breakout, Lime Green-25M



### FCA-12M5LCULCURK2-25

#### Features

- 12X LC UPC to 12X LC UPC
- Indoor multimode OM5
- Riser (OFNR) rated cable
- 6.2mm with tight buffer and aramid yarn strength member
- 2mm TIA 598 color coded, .5M breakout
- Suitable for ceilings and riser areas

#### Applications

- Data centers
- Passive Optical Networks (PON)
- Local Area Networks (LAN)
- Enterprise Networking
- Storage and cloud based services
- AI data storage and communications
- Headend termination to a fiber backbone
- Terminations of data center fiber rack system

#### Description

The L-com FCA-12M5LCULCURK2-25 is a fiber optic breakout cable assembly that is equipped with 12-fiber LC/UPC to LC/UPC connectors. This cable assembly comes with a multimode OM5 fiber that offers cutting-edge Wideband Multimode Fiber (WBMMF) technology, supporting at least four WDM channels at 28 Gbps per channel over the 850-953nm wavelength range and a bandwidth of 28000 MHz·km. The lime green fiber optic cable has an OFNR-rated PVC jacket and a length of 25 meters.

Our fiber optic breakout cable is a robust and versatile fiber optic assembly designed for high-performance data transmission in various environments. L-com's fiber optic breakout assembly is engineered for indoor high-speed deployments and guarantees reliability and superior signal integrity. With an operating temperature range of -20 to 70 degrees C, this FCA-12M5LCULCURK2-25 cable assembly provides reliable performance across diverse conditions.

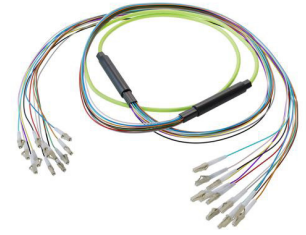
This fiber optic cable from L-com is suitable for applications such as data centers, passive optical networks (PON), local area networks (LAN), enterprise networking, storage and cloud based services, AI data storage and communications, headend termination to a fiber backbone, and terminations of data center fiber rack system. Our breakout cable comes with a cable diameter of 6.2 mm and has an insertion loss of 0.3 dB. Additional dimensions, specifications, and CAD drawings for this 12-fiber cable assembly can be found on its downloadable PDF datasheet.

L-com has one of the largest in-stock selections of LC/UPC to LC/UPC fiber optic breakout cords for international and domestic orders. We are committed to delivering excellent service to support our customers in maintaining the continuity and reliability of their networks. For further information on similar products, our expert technical support and knowledgeable sales team can help you get the ideal OM5 multimode fiber optic cable that meets your requirements.

#### Configuration

Function	Breakout
Cable Type	Base-12 Multimode
Mode	Multimode
Mode Class	OM5
Fiber Diameter	50/125 μm
Connection 1 Type	LC
Connection 1 Polish	UPC
Connection 2 Type	LC
Connection 2 Polish	UPC
Cable Color	Lime Green

12-Fiber LC UPC to LC UPC, OM5 Multimode Distribution Cable, 6.2mm Riser, 2.0mm breakout, Lime Green-25M



**FCA-12M5LCULCURK2-25**

**Optical Specifications**

Description	Minimum	Typical	Maximum	Units
Return Loss - LC, ST, SC, FC	30			dB
Insertion Loss - LC, ST, SC, FC			0.3	dB

**Mechanical Specifications**

**Cable Assembly**

Length	25 m [984.25 in]
Width/Diameter	6.2 mm
Weight	254.92 g [0.562 lbs]

**Cable**

Cable Type	Breakout
Static Bend Radius	47 mm
Dynamic Bend Radius	93 mm
Max Crush Resistance, Short Term (N/100mm)	1,000
Max Crush Resistance, Long Term (N/100mm)	300

**Connectors**

Description	Connector 1	Connector 2
Type	LC	LC
Connector Polish	UPC	UPC

**Environmental Specifications**

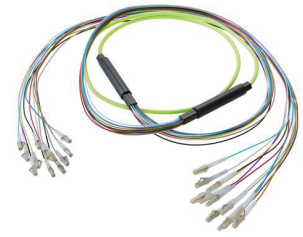
Operating Range Temperature	-20 to +70 deg C
Storage Range Temperature	-40 to +70 deg C
Ingress Protection (IP) Rating	Non-Rated

**Compliance Certifications** (see [product page](#) for current document)

**Plotted and Other Data**

Notes:

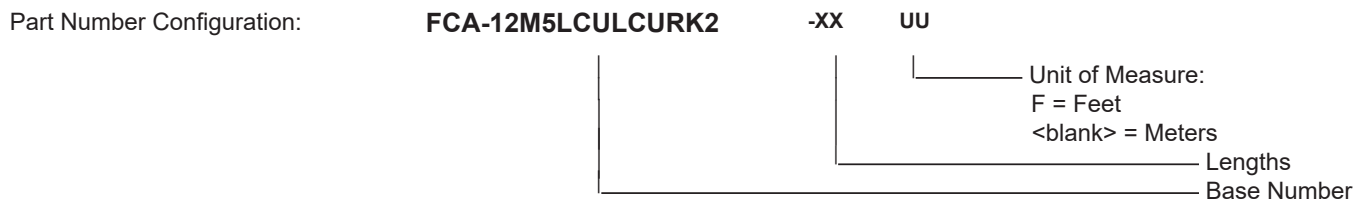
12-Fiber LC UPC to LC UPC, OM5 Multimode Distribution Cable, 6.2mm Riser, 2.0mm breakout, Lime Green-25M



**FCA-12M5LCULCURK2-25**

**Typical Performance Data**

**How to Order**



Example:    FCA-12M5LCULCURK2-12 = 12 meters long cable  
              FCA-12M5LCULCURK2-10F = 10 feet long cable

12-Fiber LC UPC to LC UPC, OM5 Multimode Distribution Cable, 6.2mm Riser, 2.0mm breakout, Lime Green-25M from L-com has same day shipment for domestic and International orders. Our portfolio includes coaxial cable assemblies, connectors, adapters and custom products as well as lightning and surge protectors, NEMA rated enclosures, and an RF product line which includes antennas, amplifiers, passive, and active components.

URL:    <https://www.l-com.com/12-fiber-lc-upc-lc-upc-om5-multimode-distribution-cable-6.2mm-riser-2.0mm-breakout-lime-green-25m-fca-12m5lculcurk2-25>

The information contained within this document is accurate to the best of our knowledge and representative of the part described herein. It may be necessary to make modifications to the part and/or the documentation of the part in order to impliment improvements. L-com reserves the right to make such changes as required. Unless otherwise stated, all specifications are nominal. L-com does not make any representation or warranty regarding the suitability of the part described herein for any particular purpose, and L-com does not assume liability arising out of the use of any part or document.

# FCA-12M5LCULCURK2-25 CAD Drawing

12-Fiber LC UPC to LC UPC, OM5 Multimode Distribution Cable, 6.2mm Riser, 2.0mm breakout, Lime Green-25M

