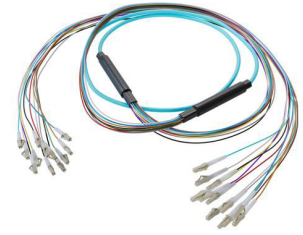


12-Fiber LC UPC to LC UPC, OM4 Multimode Distribution Cable, 6.2mm Plenum, 2.0mm breakout, Aqua-25M



FCA-12M4LCULCUPK2-25

Features

- 12X LC UPC to 12X LC UPC
- Indoor multimode OM4
- Plenum (OFNP) rated cable
- 6.2mm with tight buffer and aramid yarn strength member
- 2mm TIA 598 color coded, .5M breakout
- Suitable for wall, ceiling, conduits, and between buildings

Applications

- Data centers
- Passive Optical Networks (PON)
- Local Area Networks (LAN)
- Enterprise Networking
- Storage and cloud based services
- AI data storage and communications
- Headend termination to a fiber backbone
- Terminations of data center fiber rack system

Description

L-com's FCA-12M4LCULCUPK2-25 is a fiber optic breakout cable that is built with 12-fiber LC/UPC to LC/UPC connectors. This cable assembly comes with multimode OM4 fiber that offers stable, high-speed transmission over short distances. Our aqua blue fiber optic cable assembly has an OFNP-rated PVC jacket. Make your online purchase right now to take advantage of our same business day shipping.

This 12-fiber fiber optic cable has a fiber diameter of 50/125 μm and a cable diameter of 6.2 mm. With an operating temperature range of 0 to 60 degrees C, this cable provides reliable performance across diverse conditions. Our multimode cable assembly is suitable for applications such as data centers, passive optical networks (PON), local area networks (LAN), enterprise networking, storage and cloud based services, AI data storage and communications, headend termination to a fiber backbone and terminations of data center fiber rack system.

Our fiber optic cable assembly can be customized in different lengths to fit specific installation needs, ensuring efficient network management in high-density setups without compromising delivery time or quality. L-com's FCA-12M4LCULCUPK2-25 multimode cable has a maximum insertion loss of 0.3 dB. Additional dimensions, specifications, and CAD drawings for this 12-fiber fiber optic cable can be found on its downloadable PDF datasheet.

L-com has one of the largest in-stock selections of multimode LC/UPC fiber optic cable assemblies for international and domestic orders. We are committed to delivering excellent service to support our customers in maintaining the continuity and reliability of their networks. For further information on similar products, our expert technical support and knowledgeable sales team can help you get the ideal 12-fiber LC/UPC to LC/UPC cable that meets your requirements.

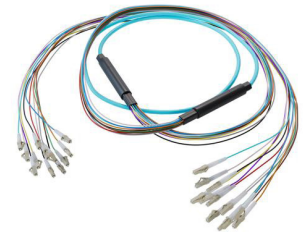
Configuration

Function	Breakout
Cable Type	Base-12 Multimode
Mode	Multimode
Mode Class	OM4
Fiber Diameter	50/125 μm
Connection 1 Type	LC
Connection 1 Polish	UPC
Connection 2 Type	LC
Connection 2 Polish	UPC
Cable Color	Aqua Blue

Optical Specifications

Description	Minimum	Typical	Maximum	Units
Return Loss - LC, ST, SC, FC	30			dB

12-Fiber LC UPC to LC UPC, OM4 Multimode Distribution Cable, 6.2mm Plenum, 2.0mm breakout, Aqua-25M



FCA-12M4LCULCUPK2-25

Optical Specifications

Description	Minimum	Typical	Maximum	Units
Insertion Loss - LC, ST, SC, FC			0.3	dB

Mechanical Specifications

Cable Assembly

Length	25 m [984.25 in]
Width/Diameter	6.2 mm
Weight	254.92 g [0.562 lbs]

Cable

Cable Type	Breakout
Static Bend Radius	47 mm
Dynamic Bend Radius	93 mm
Max Crush Resistance, Short Term (N/100mm)	1,000
Max Crush Resistance, Long Term (N/100mm)	300

Connectors

Description	Connector 1	Connector 2
Type	LC	LC
Connector Polish	UPC	UPC

Environmental Specifications

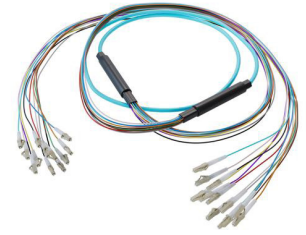
Operating Range Temperature	0 to +60 deg C
Storage Range Temperature	-20 to +60 deg C
Ingress Protection (IP) Rating	Non-Rated

Compliance Certifications (see [product page](#) for current document)

Plotted and Other Data

Notes:

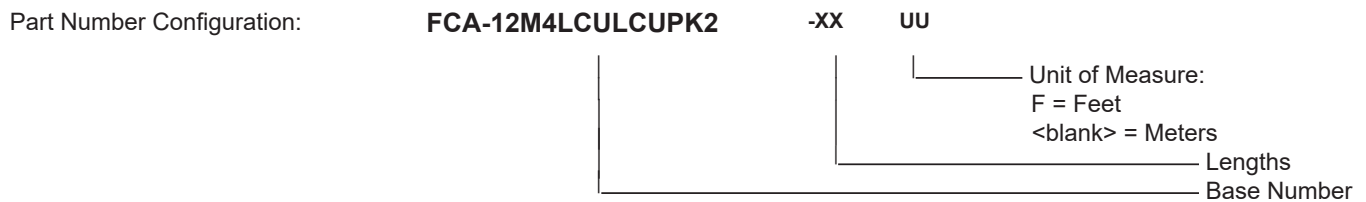
12-Fiber LC UPC to LC UPC, OM4 Multimode Distribution Cable, 6.2mm Plenum, 2.0mm breakout, Aqua-25M



FCA-12M4LCULCUPK2-25

Typical Performance Data

How to Order



Example: FCA-12M4LCULCUPK2-12 = 12 meters long cable
FCA-12M4LCULCUPK2-10F = 10 feet long cable

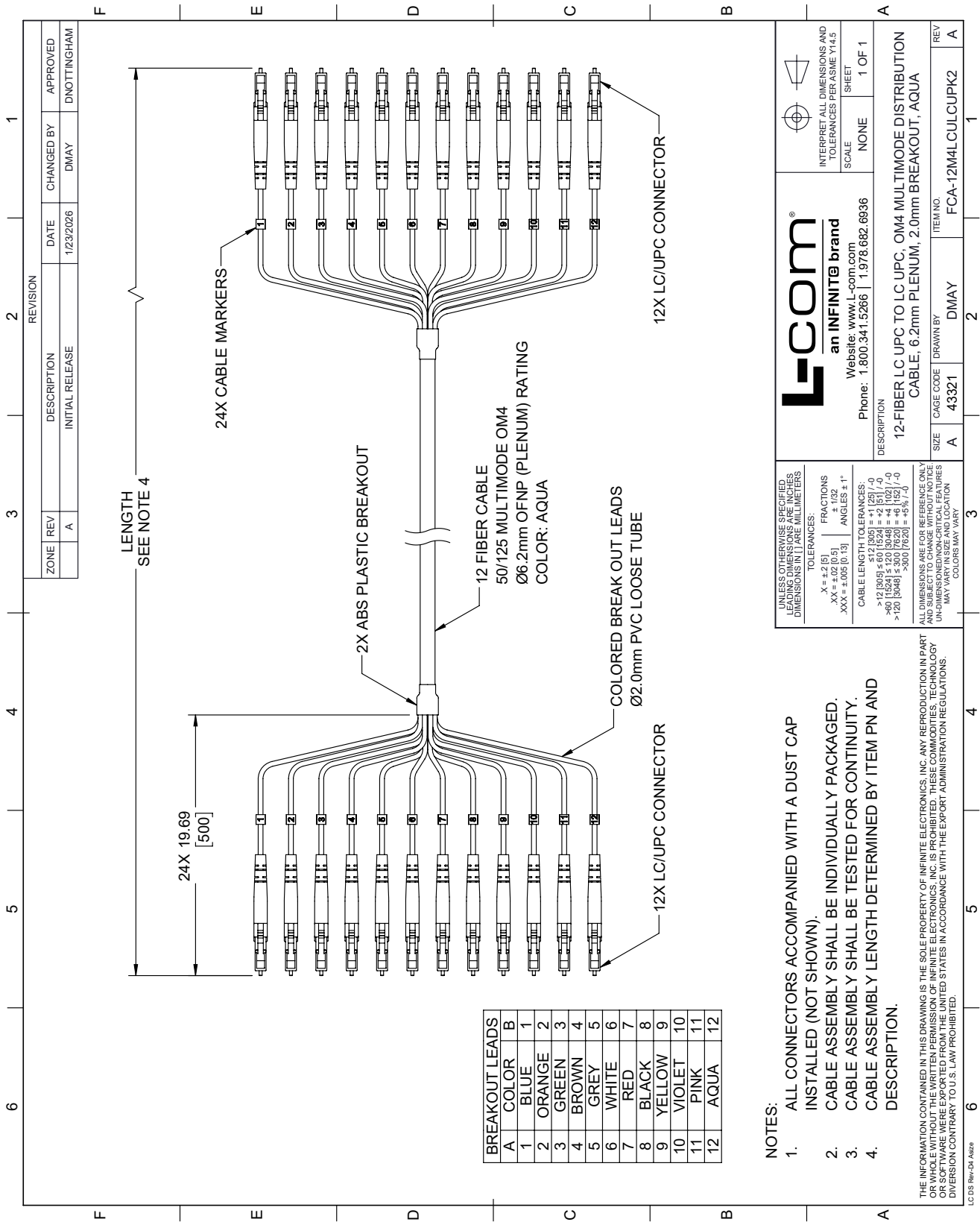
12-Fiber LC UPC to LC UPC, OM4 Multimode Distribution Cable, 6.2mm Plenum, 2.0mm breakout, Aqua-25M from L-com has same day shipment for domestic and International orders. Our portfolio includes coaxial cable assemblies, connectors, adapters and custom products as well as lightning and surge protectors, NEMA rated enclosures, and an RF product line which includes antennas, amplifiers, passive, and active components.

URL: <https://www.l-com.com/12-fiber-lc-upc-lc-upc-om4-multimode-distribution-cable-6.2mm-plenum-2.0mm-breakout-aqua-25m-fca-12m4-lc-culcupk2-25>

The information contained within this document is accurate to the best of our knowledge and representative of the part described herein. It may be necessary to make modifications to the part and/or the documentation of the part in order to implement improvements. L-com reserves the right to make such changes as required. Unless otherwise stated, all specifications are nominal. L-com does not make any representation or warranty regarding the suitability of the part described herein for any particular purpose, and L-com does not assume liability arising out of the use of any part or document.

FCA-12M4LCULCUPK2-25 CAD Drawing

12-Fiber LC UPC to LC UPC, OM4 Multimode Distribution Cable, 6.2mm Plenum, 2.0mm breakout, Aqua-25M



- NOTES:**
- ALL CONNECTORS ACCOMPANIED WITH A DUST CAP INSTALLED (NOT SHOWN).
 - CABLE ASSEMBLY SHALL BE INDIVIDUALLY PACKAGED.
 - CABLE ASSEMBLY SHALL BE TESTED FOR CONTINUITY.
 - CABLE ASSEMBLY LENGTH DETERMINED BY ITEM PN AND DESCRIPTION.

THE INFORMATION CONTAINED IN THIS DRAWING IS THE SOLE PROPERTY OF INFINITE ELECTRONICS, INC. ANY REPRODUCTION IN PART OR WHOLE WITHOUT THE WRITTEN PERMISSION OF INFINITE ELECTRONICS, INC. IS PROHIBITED. THESE COMMODITIES, TECHNOLOGY OR SOFTWARE WERE EXPORTED FROM THE UNITED STATES IN ACCORDANCE WITH THE EXPORT ADMINISTRATION REGULATIONS. DIVERSION CONTRARY TO U.S. LAW PROHIBITED.

UNLESS OTHERWISE SPECIFIED LEAD DIMENSIONS IN INCHES DIMENSIONS IN [] ARE MILLIMETERS

TOLERANCES:
 .X = ±.2 [5]
 .XX = ±.02 [0.5]
 .XXX = ±.005 [0.13]

FRACTIONS ± 1/32
 ANGLES ± 1°

CABLE LENGTH TOLERANCES:
 >12 (305) ≤ 60 (1524) = ±.125 / -0
 >60 (1524) ≤ 120 (3048) = ±.15 / -0
 >120 (3048) ≤ 300 (7620) = ±.15 / -0
 >300 (7620) = ±.15 / -0

ALL DIMENSIONS ARE FOR REFERENCE ONLY AND SUBJECT TO CHANGE WITHOUT NOTICE UNLESS INDICATED OTHERWISE. DIMENSIONS MAY VARY. COLORS MAY VARY.

L-com
 an INFINITE brand
 Website: www.L-com.com
 Phone: 1.800.341.5266 | 1.978.682.6936

INTERPRET ALL DIMENSIONS AND TOLERANCES PER ASME Y14.5
 SCALE NONE
 SHEET 1 OF 1

DESCRIPTION
 12-FIBER LC UPC TO LC UPC, OM4 MULTIMODE DISTRIBUTION CABLE; 6.2mm PLENUM; 2.0mm BREAKOUT, AQUA

SIZE	CAGE CODE	DRAWN BY	ITEM NO.	REV
A	43321	DMAY	FCA-12M4LCULCUPK2	A