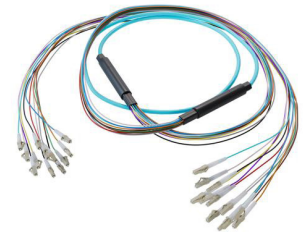


## 12-Fiber LC UPC to LC UPC, OM4 Multimode Distribution Cable, 6.2mm LSZH, 2.0mm breakout, Aqua-15M



### FCA-12M4LCULCUZK2-15

#### Features

- 12X LC UPC to 12X LC UPC
- Indoor multimode OM4
- Low Smoke Zero Halogen (LSZH) rated cable
- 6.2mm with tight buffer and aramid yarn strength member
- 2mm TIA 598 color coded, .5M breakout
- Suitable for confined installations where flame resistance is required

#### Applications

- Data centers
- Passive Optical Networks (PON)
- Local Area Networks (LAN)
- Enterprise Networking
- Storage and cloud based services
- AI data storage and communications
- Headend termination to a fiber backbone
- Terminations of data center fiber rack system

#### Description

L-com's FCA-12M4LCULCUZK2-15 is a fiber optic breakout cable that is built with 12-fiber LC/UPC to LC/UPC connectors. This cable assembly comes with multimode OM4 fiber that offers stable, high-speed transmission over short distances. Our aqua blue fiber optic cable assembly has an LSZH-rated PE jacket. Make your online purchase right now to take advantage of our same business day shipping.

This 12-fiber fiber optic cable has a fiber diameter of 50/125  $\mu\text{m}$  and a cable diameter of 6.2 mm. With an operating temperature range of -20 to 70 degrees C, this cable provides reliable performance across diverse conditions. Our multimode cable assembly is suitable for applications such as data centers, passive optical networks (PON), local area networks (LAN), enterprise networking, storage and cloud based services, AI data storage and communications, headend termination to a fiber backbone and terminations of data center fiber rack system.

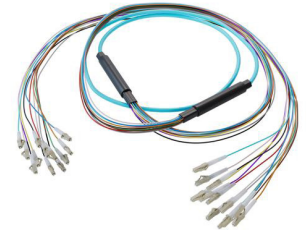
Our fiber optic cable assembly can be customized in different lengths to fit specific installation needs, ensuring efficient network management in high-density setups without compromising delivery time or quality. L-com's FCA-12M4LCULCUZK2-15 multimode cable has a maximum insertion loss of 0.3 dB. Additional dimensions, specifications, and CAD drawings for this 12-fiber fiber optic cable can be found on its downloadable PDF datasheet.

L-com has one of the largest in-stock selections of multimode LC/UPC fiber optic cable assemblies for international and domestic orders. We are committed to delivering excellent service to support our customers in maintaining the continuity and reliability of their networks. For further information on similar products, our expert technical support and knowledgeable sales team can help you get the ideal 12-fiber LC/UPC to LC/UPC cable that meets your requirements.

#### Configuration

|                     |                      |
|---------------------|----------------------|
| Function            | Breakout             |
| Cable Type          | Base-12 Multimode    |
| Mode                | Multimode            |
| Mode Class          | OM4                  |
| Fiber Diameter      | 50/125 $\mu\text{m}$ |
| Connection 1 Type   | LC                   |
| Connection 1 Polish | UPC                  |
| Connection 2 Type   | LC                   |
| Connection 2 Polish | UPC                  |
| Cable Color         | Aqua Blue            |

12-Fiber LC UPC to LC UPC, OM4 Multimode Distribution Cable, 6.2mm LSZH, 2.0mm breakout, Aqua-15M



## FCA-12M4LCULCUZK2-15

### Optical Specifications

| Description                     | Minimum | Typical | Maximum | Units |
|---------------------------------|---------|---------|---------|-------|
| Return Loss - LC, ST, SC, FC    | 30      |         |         | dB    |
| Insertion Loss - LC, ST, SC, FC |         |         | 0.3     | dB    |

### Mechanical Specifications

#### Cable Assembly

|                |                      |
|----------------|----------------------|
| Length         | 15 m [590.55 in]     |
| Width/Diameter | 6.2 mm               |
| Weight         | 191.42 g [0.422 lbs] |

#### Cable

|  |          |
|--|----------|
| Cable Type                                 | Breakout |
| Static Bend Radius                         | 47 mm    |
| Dynamic Bend Radius                        | 93 mm    |
| Max Crush Resistance, Short Term (N/100mm) | 1,000    |
| Max Crush Resistance, Long Term (N/100mm)  | 300      |

### Connectors

| Description      | Connector 1 | Connector 2 |
|------------------|-------------|-------------|
| Type             | LC          | LC          |
| Connector Polish | UPC         | UPC         |

### Environmental Specifications

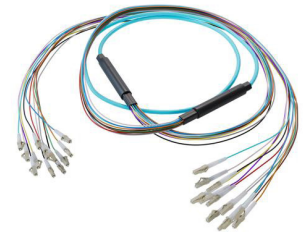
|                                |                  |
|--------------------------------|------------------|
| Operating Range Temperature    | -20 to +70 deg C |
| Storage Range Temperature      | -40 to +70 deg C |
| Ingress Protection (IP) Rating | Non-Rated        |

**Compliance Certifications** (see [product page](#) for current document)

### Plotted and Other Data

Notes:

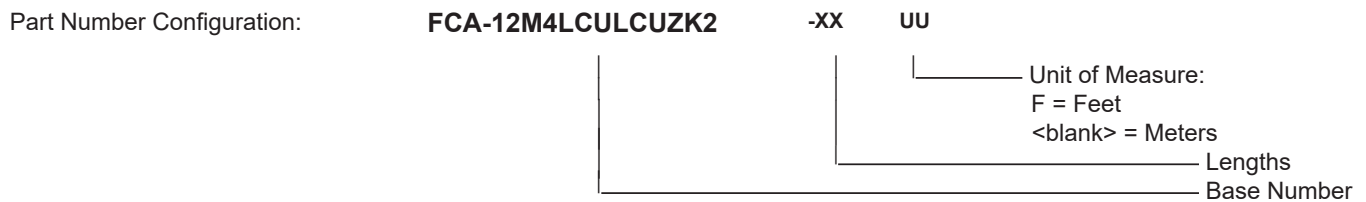
12-Fiber LC UPC to LC UPC, OM4 Multimode Distribution Cable, 6.2mm LSZH, 2.0mm breakout, Aqua-15M



**FCA-12M4LCULCUZK2-15**

**Typical Performance Data**

**How to Order**



Example: FCA-12M4LCULCUZK2-12 = 12 meters long cable  
FCA-12M4LCULCUZK2-10F = 10 feet long cable

12-Fiber LC UPC to LC UPC, OM4 Multimode Distribution Cable, 6.2mm LSZH, 2.0mm breakout, Aqua-15M from L-com has same day shipment for domestic and International orders. Our portfolio includes coaxial cable assemblies, connectors, adapters and custom products as well as lightning and surge protectors, NEMA rated enclosures, and an RF product line which includes antennas, amplifiers, passive, and active components.

URL: <https://www.l-com.com/12-fiber-lc-upc-lc-upc-om4-multimode-distribution-cable-6.2mm-lszh-2.0mm-breakout-aqua-15m-fca-12m4lcul-cuzk2-15>

The information contained within this document is accurate to the best of our knowledge and representative of the part described herein. It may be necessary to make modifications to the part and/or the documentation of the part in order to impliment improvements. L-com reserves the right to make such changes as required. Unless otherwise stated, all specifications are nominal. L-com does not make any representation or warranty regarding the suitability of the part described herein for any particular purpose, and L-com does not assume liability arising out of the use of any part or document.

# FCA-12M4LCULCUZK2-15 CAD Drawing

12-Fiber LC UPC to LC UPC, OM4 Multimode Distribution Cable, 6.2mm LSZH, 2.0mm breakout, Aqua-15M

