

N Male Connector Clamp/Non-Solder Contact Attachment for LMR-600, LMR-600-DB, LMR-600-FR, and 600-Series Cable



## EZ-600-NMC-2-D-LC



### Times Microwave Systems Connector Specification

#### Configuration

- N Male Connector
- 50 Ohms
- Straight Body Geometry
- LMR-600, LMR-600-DB, LMR-600-FR, 600-Series Interface Type
- Clamp/Non-Solder Contact Attachment
- 20.57 mm Hex

#### Features

- Designed to industry standard interface dimensions
- Quality body materials and plating
- Clamp/Non-Solder Contact attachment
- Operates to 6 GHz

#### Applications

- RF Boxes and components
- RF Test systems
- General Purpose RF Interconnect
- Laboratory applications

#### Description

L-com's N Male connector for LMR-600, LMR-600-DB, LMR-600-FR and 600-Series coax uses a Clamp/Non-Solder Contact attachment method. This N connector is one of the many RF coaxial connectors in L-com's product line up and like all our products, they will ship the same day. Our N Male connector operates up to a maximum frequency of 6 GHz.

The specifications and a basic dimensional drawing for EZ-600-NMC-2-D-LC Male N connector can be found in this datasheet PDF. L-com's portfolio of RF and microwave connectors allows users to choose from a large number of options when building assemblies to fit their RF interconnect needs. RF cables can be created to fulfill many interconnect applications ranging from In the Box hookup, test equipment connectivity or as part of a system installation. In addition to an offering of RF connectors and coaxial cable L-com offers both standard and custom cable assemblies to fit a customer's specific needs.

#### Electrical Specifications

Description	Minimum	Typical	Maximum	Units
Frequency Range	DC		6	GHz
VSWR			1.35:1	
Dielectric Withstanding Voltage (AC)			2,500	Vrms

#### Performance by Frequency

Description	F1	F2	F3	F4	F5	Units
Insertion Loss, Max	0.1					dB

Click the following link (or enter part number in "SEARCH" on website) to obtain additional part information including price, inventory and certifications: [N Male Connector Clamp/Non-Solder Contact Attachment for LMR-600, LMR-600-DB, LMR-600-FR, and 600-Series Cable EZ-600-NMC-2-D-LC](#)

N Male Connector Clamp/Non-Solder Contact Attachment for LMR-600, LMR-600-DB, LMR-600-FR, and 600-Series Cable



**EZ-600-NMC-2-D-LC**



**Mechanical Specifications**

**Size**

Length	1.83in	[46.48mm]
Width/Dia.	1in	[25.40mm]
Weight	0.148lbs	[67.13g]
Mating Torque	44in-lbs	[4.97Nm]

**Material Specifications**

Description	Material	Plating
Contact	Beryllium Copper	Gold 1.27µm minimum
Insulation	PTFE	
Body	Brass	Tri-Metal 2µm minimum
Coupling Nut	Brass	Tri-Metal 2µm minimum

**Environmental Specifications**

**Temperature**

Operating Range	-55°C to +155°C
Shock	MIL-STD 202, Method 213, Condition I
Vibration	MIL-STD 202, Method 204, Condition B

Click the following link (or enter part number in "SEARCH" on website) to obtain additional part information including price, inventory and certifications: [N Male Connector Clamp/Non-Solder Contact Attachment for LMR-600, LMR-600-DB, LMR-600-FR, and 600-Series Cable EZ-600-NMC-2-D-LC](#)

N Male Connector Clamp/Non-Solder Contact Attachment for LMR-600, LMR-600-DB, LMR-600-FR, and 600-Series Cable



## EZ-600-NMC-2-D-LC



**Compliance Certifications** (see [product page](#) for current document)

### Plotted and Other Data

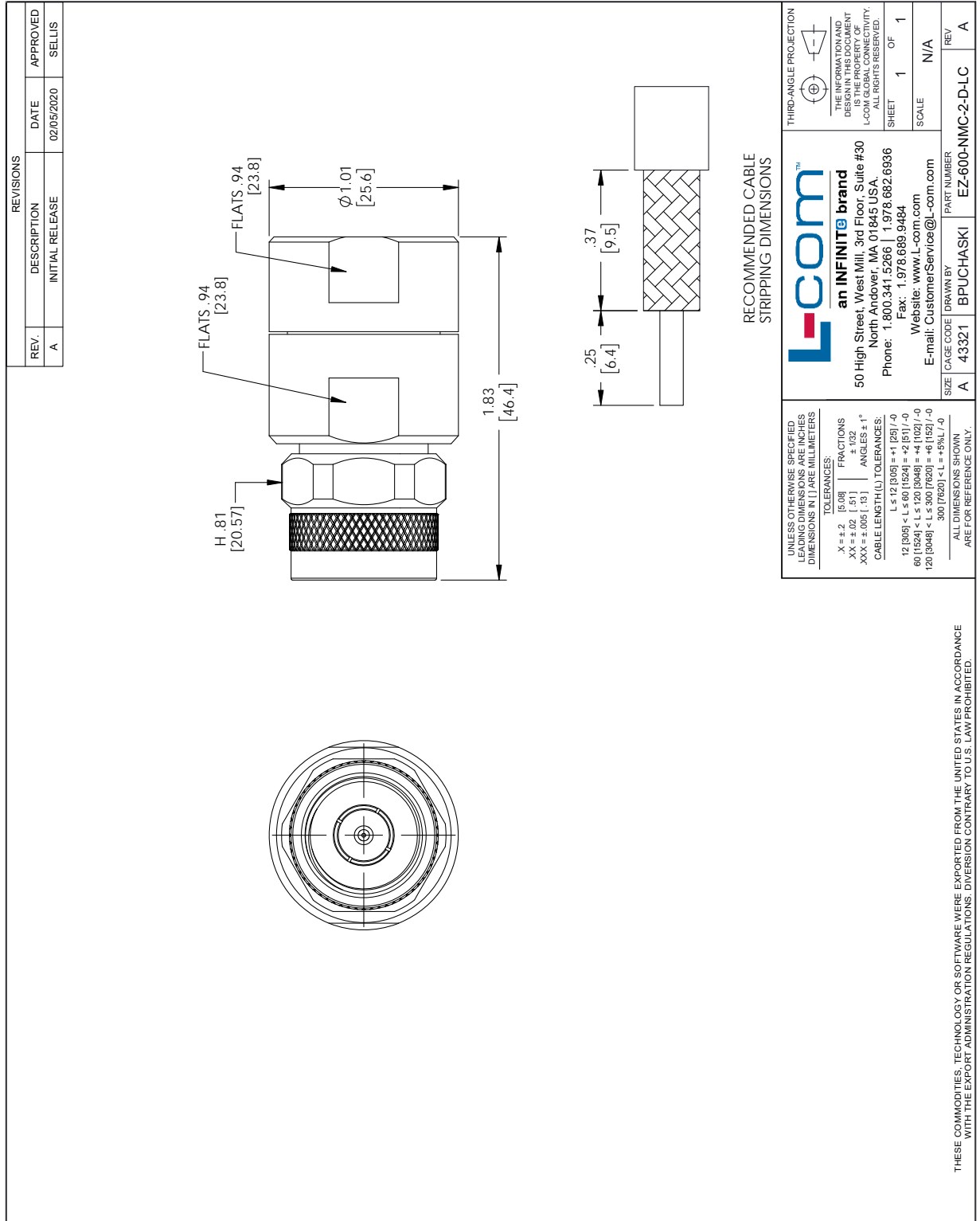
N Male Connector Clamp/Non-Solder Contact Attachment for LMR-600, LMR-600-DB, LMR-600-FR, and 600-Series Cable from L-com has same day shipment for domestic and International orders. Our portfolio includes coaxial cable assemblies, connectors, adapters and custom products as well as lightning and surge protectors, NEMA rated enclosures, and an RF product line which includes antennas, amplifiers, passive, and active components. Click the following link (or enter part number in "SEARCH" on website) to obtain additional part information including price, inventory and certifications: N Male Connector Clamp/Non-Solder Contact Attachment for LMR-600, LMR-600-DB, LMR-600-FR, and 600-Series Cable EZ-600-NMC-2-D-LC

URL: <https://www.l-com.com/n-male-connector-clamp-non-solder-contact-attachment-lmr-600-lmr-600-db-lmr-600-fr-600-series-cable-ez-600-nmc-2-d-lc-p.aspx>

The information contained within this document is accurate to the best of our knowledge and representative of the part described herein. It may be necessary to make modifications to the part and/or the documentation of the part in order to implement improvements. L-com reserves the right to make such changes as required. Unless otherwise stated, all specifications are nominal. L-com does not make any representation or warranty regarding the suitability of the part described herein for any particular purpose, and L-com does not assume liability arising out of the use of any part or document. The information contained within this document is accurate to the best of our knowledge and representative of the part described herein. It may be necessary to make modifications to the part and/or the documentation of the part in order to implement improvements. L-com reserves the right to make such changes as required. Unless otherwise stated, all specifications are nominal. L-com does not make any representation or warranty regarding the suitability of the part described herein for any particular purpose, and L-com does not assume liability arising out of the use of any part or document.

N Male Connector Clamp/Non-Solder Contact Attachment for LMR-600, LMR-600-DB, LMR-600-FR, and 600-Series Cable

L-com CAD Drawing



**L-com**<sup>TM</sup>

**an INFINITE brand**

50 High Street, West Mill, 3rd Floor, Suite #30  
North Andover, MA 01845 USA  
Phone: 1.800.341.5266 | 1.978.682.6936  
Fax: 1.978.689.9484  
Website: www.L-com.com  
E-mail: CustomerService@L-com.com

THIRD-ANGLE PROJECTION

THE INFORMATION AND DESIGNATION SHOWN HEREIN IS THE PROPERTY OF L-COM GLOBAL CONNECTIVITY. ALL RIGHTS RESERVED.

SHEET 1 OF 1

SCALE N/A

REV A

SIZE A CAGE CODE 43321 DRAWN BY BPUCHASKI PART NUMBER EZ-600-NMC-2-DLC