



7/16 DIN M/F Quarter Wave RF Protector, DC to 4.5GHz, Low PIM

RF Surge Protectors Technical Data Sheet

ALQP-DMDF-ER

Features

- Extended Range Broadband Performance from 555 to 4,500 MHz
- DC Block Topology
- Repetitive Strike Protection
- Low PIM

Applications

- CBRS Networks
- Cellular
- Distributed Antenna Systems (DAS)
- Emergency Response Systems
- Public Safety Systems

Description

RF surge protector (also known as lightning arrestor) ALQP-DMDF-ER from L-Com utilizing a quarter wave stub design to protect critical hardware while maintaining the RF performance. This RF surge protector component is manufactured in a coaxial in-line design with wide operating frequency range. L-Com RF surge protector products are available in stock with same day shipping.

Electrical Specifications

Surge Protector Type		Quarter Wave Stub		
Description	Minimum	Typical	Maximum	Units
Frequency Range	0.555		4.5	GHz
Impedance		50		Ohms
VSWR			1.18:1	
Insertion Loss			0.1	dB
Passive Intermodulation			160	dBc
Input Power, CW			200	Watts
Surge Current IEC 61000-4-5 8/20µs			50	kA

Mechanical Specifications

Size

Length	2.87 in [72.9 mm]
Width/Diameter	0.98 in [24.89 mm]
Height	1.47 in [37.34 mm]
Weight	0.5 lbs [226.8 g]
Housing Material and Plating	Brass, Tri-Metal

Configuration

Input Connector	7/16 DIN Male
Output Connector	7/16 DIN Female

Click the following link (or enter part number in "SEARCH" on website) to obtain additional part information including price, inventory and certifications: [7/16 DIN M/F Quarter Wave RF Protector, DC to 4.5GHz, Low PIM ALQP-DMDF-ER](#)



7/16 DIN M/F Quarter Wave RF Protector, DC to 4.5GHz, Low PIM

RF Surge Protectors Technical Data Sheet

ALQP-DMDF-ER

Environmental Specifications

Temperature

Operating Range

-40 to +85 deg C

Compliance Certifications (see [product page](#) for current document)

Plotted and Other Data

Notes:

Our portfolio includes cable assemblies, connectors, adapters and custom products, as well as their wireless product line which includes antennas, RF amplifiers, coaxial lightning and surge protectors, and NEMA rated enclosures.

Click the following link (or enter part number in "SEARCH" on website) to obtain additional part information including price, inventory and certifications: [7/16 DIN M/F Quarter Wave RF Protector, DC to 4.5GHz, Low PIM ALQP-DMDF-ER](#)

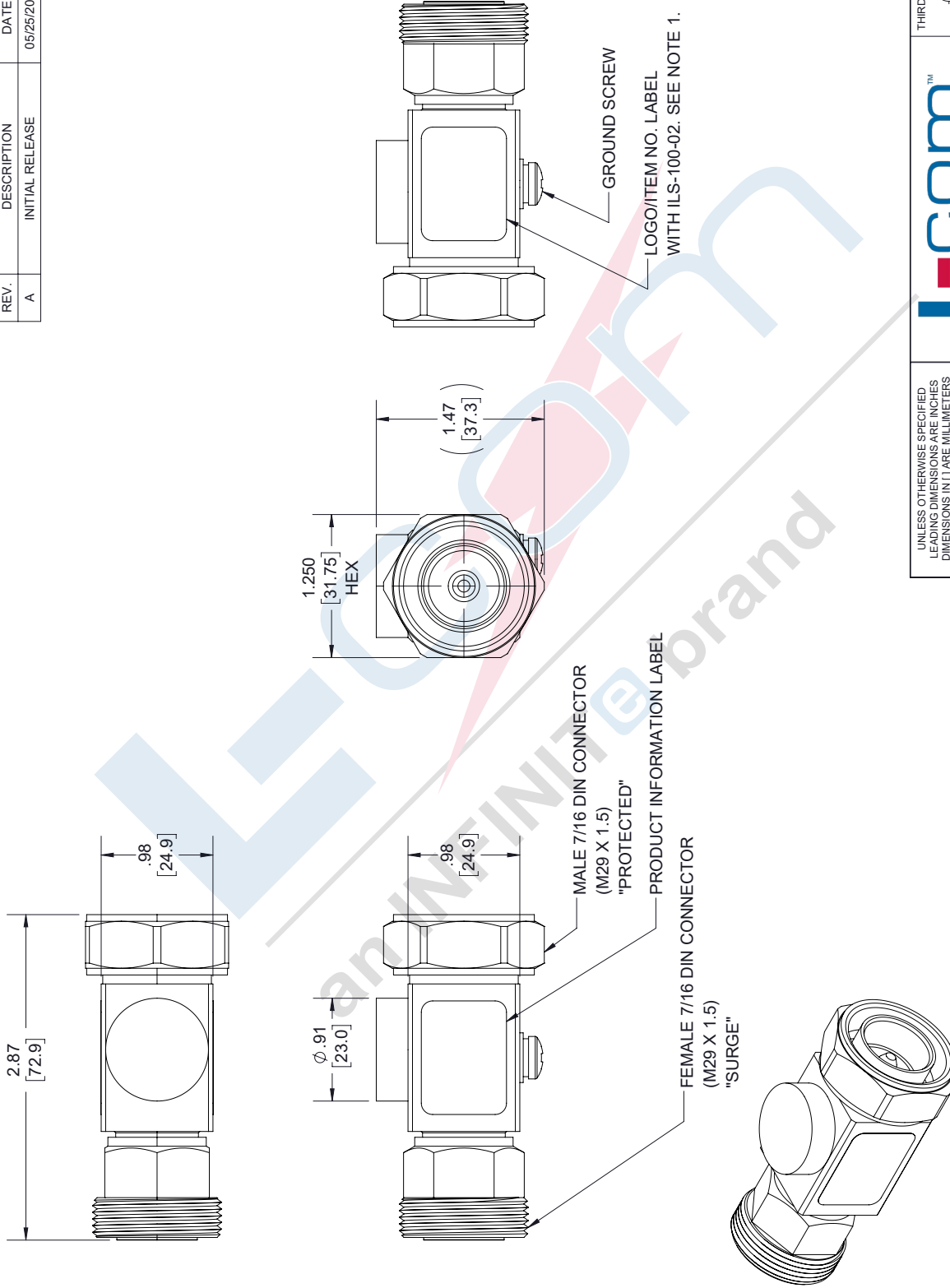
URL: <https://www.l-com.com/7-16-din-surge-protector-4.5ghz-quarter-alqp-dmdf-er-p.aspx>

The information contained in this document is accurate to the best of our knowledge and representative of the part described herein. It may be necessary to make modifications to the part and/or the documentation of the part, in order to implement improvements. L-com reserves the right to make such changes as required. Unless otherwise stated, all specifications are nominal. L-com does not make any representation or warranty regarding the suitability of the part described herein for any particular purpose, and L-com does not assume any liability arising out of the use of any part or documentation.

ALQP-DMDF-ER CAD Drawing

7/16 DIN M/F Quarter Wave RF Protector, DC to 4.5GHz, Low PIM

REVISIONS			
REV.	DESCRIPTION	DATE	APPROVED
A	INITIAL RELEASE	05/25/2022	DREBECK



<p>UNLESS OTHERWISE SPECIFIED LEADING DIMENSIONS ARE INCHES DIMENSIONS IN [] ARE MILLIMETERS</p> <p>TOLERANCES:</p> <table border="0"> <tr> <td>X = ± .2 [5.08]</td> <td>FRACTIONS</td> </tr> <tr> <td>XX = ± .02 [.51]</td> <td>± 1/32</td> </tr> <tr> <td>XXX = ± .005 [.13]</td> <td>ANGLES ± 1°</td> </tr> </table> <p>CABLE LENGTH (L) TOLERANCES:</p> <table border="0"> <tr> <td>L ≤ 12 [305]</td> <td>± .1 [25] / -0</td> </tr> <tr> <td>12 [305] < L ≤ 60 [1524]</td> <td>± .2 [51] / -0</td> </tr> <tr> <td>60 [1524] < L ≤ 120 [3048]</td> <td>± .4 [102] / -0</td> </tr> <tr> <td>120 [3048] < L ≤ 300 [7620]</td> <td>± .6 [152] / -0</td> </tr> <tr> <td>300 [7620] < L</td> <td>± .5% L / -0</td> </tr> </table> <p>ALL DIMENSIONS SHOWN ARE FOR REFERENCE ONLY.</p>	X = ± .2 [5.08]	FRACTIONS	XX = ± .02 [.51]	± 1/32	XXX = ± .005 [.13]	ANGLES ± 1°	L ≤ 12 [305]	± .1 [25] / -0	12 [305] < L ≤ 60 [1524]	± .2 [51] / -0	60 [1524] < L ≤ 120 [3048]	± .4 [102] / -0	120 [3048] < L ≤ 300 [7620]	± .6 [152] / -0	300 [7620] < L	± .5% L / -0	<p>THIRD-ANGLE PROJECTION</p> <p>THE INFORMATION AND DESIGN IN THIS DOCUMENT IS THE PROPERTY OF L-COM GLOBAL CONNECTIVITY. ALL RIGHTS RESERVED.</p> <p>SHEET 1 OF 1</p> <p>SCALE N/A</p>
	X = ± .2 [5.08]	FRACTIONS															
XX = ± .02 [.51]	± 1/32																
XXX = ± .005 [.13]	ANGLES ± 1°																
L ≤ 12 [305]	± .1 [25] / -0																
12 [305] < L ≤ 60 [1524]	± .2 [51] / -0																
60 [1524] < L ≤ 120 [3048]	± .4 [102] / -0																
120 [3048] < L ≤ 300 [7620]	± .6 [152] / -0																
300 [7620] < L	± .5% L / -0																
<p>ITEM NO. ALQP-DMDF-ER</p> <p>REV A</p>	<p>DRAWN BY A. KRESOWSKI</p> <p>ITEM NO. ALQP-DMDF-ER</p> <p>REV A</p>																

NOTES:

- SEE LABEL SPECIFICATION ILS-100. FOR INTERNAL REFERENCE ONLY.

THESE COMMODITIES, TECHNOLOGY OR SOFTWARE WERE EXPORTED FROM THE UNITED STATES IN ACCORDANCE WITH THE EXPORT ADMINISTRATION REGULATIONS. DIVERSION CONTRARY TO U.S. LAW PROHIBITED.