

862 to 928 MHz Rubber Duck Antenna 3 dBi SMA Male Tilt Swivel



LCANRBD1057

Features

- 862 MHz to 928 MHz
- 3 dBi Gain
- SMA Male connector
- Tilt/Swivel
- VSWR 2.5:1
- Linear polarization

Applications

- LPWAN
- ISM
- LoRaWAN
- Sigfox
- Weightless-P
- WiFi HaLow
- Fixed and Mobile Devices

Description

The LCANRBD1057 is a high-quality dual-band rubber duck antenna with 3 dBi nominal gain and has a frequency range of 862 MHz to 928 MHz. L-com's omnidirectional tilt/swivel rubber duck antenna is 5.34 inches tall and 0.79 inches wide.

The LCANRBD1057 rubber duck antenna from L-com features a SMA Male connector with an input VSWR (voltage standing wave ratio) of 2.5:1.

L-com's linearly polarized antenna can operate at temperatures ranging from -40 °C to 60 °C. This dual-band rubber duck antenna is offered with expert technical support, PDF datasheets, and CAD drawings with dimensions and specifications.

Configuration

Design	Rubber Duck
Band Type	Dual
Radiation Pattern	Omni Directional
Polarization	Linear
Connector Type	SMA Male
Number of Ports	1

Electrical Specifications

Description	Minimum	Typical	Maximum	Units
Frequency Range	862		928	MHz
Input VSWR			2.5:1	
Impedance		50		Ohms
Gain		3		dBi

Specifications by Band

Description	Band 1	Band 2	Band 3	Band 4	Band 5	Units
Frequency	0.862 to 0.87	0.902 to 0.928				GHz

Mechanical Specifications

Whip Material	ABS
Size	
Length	5.34 in [135.64 mm]

862 to 928 MHz Rubber Duck Antenna
3 dBi SMA Male Tilt Swivel



LCANRBD1057

Width	0.79 in [20.07 mm]
Height	0.79 in [20.07 mm]
Weight	0.2 lbs [90.72 g]

Connectors

Description	Connector 1	Connector 2	Connector 3
Body Material and Plating	Brass		

Environmental Specifications

Temperature Operating Range	-20 to +65 deg C
---------------------------------------	------------------

Compliance Certifications (see [product page](#) for current document)

Plotted and Other Data

Notes:

Typical Radiation Pattern

Appendix

Electrical Downtilt: Angle in the antenna's elevation pattern in which the maximum gain occurs.

Gain: Antenna's average gain.

Front to Back Ratio @ 180°±30°: Average difference between the antenna's maximum gain and the maximum gain in the antenna's back lobe over ±30° angles.

Cross-polarization Ratio (dB): Typical difference between the co-polarization and cross-polarization gain across the sector's 3 dB Beam Width.

Dedicated to serving the needs of the Wireless Internet Service Provider (WISP) market, KP Performance Antennas offers purpose built products that reliably perform in the field. KP Performance Antennas product line consists of Yagi, Grid, Omni, Dish and other style antennas that operate in the 900 MHz, 2.4 GHz, 3 GHz, and 5 GHz frequencies.

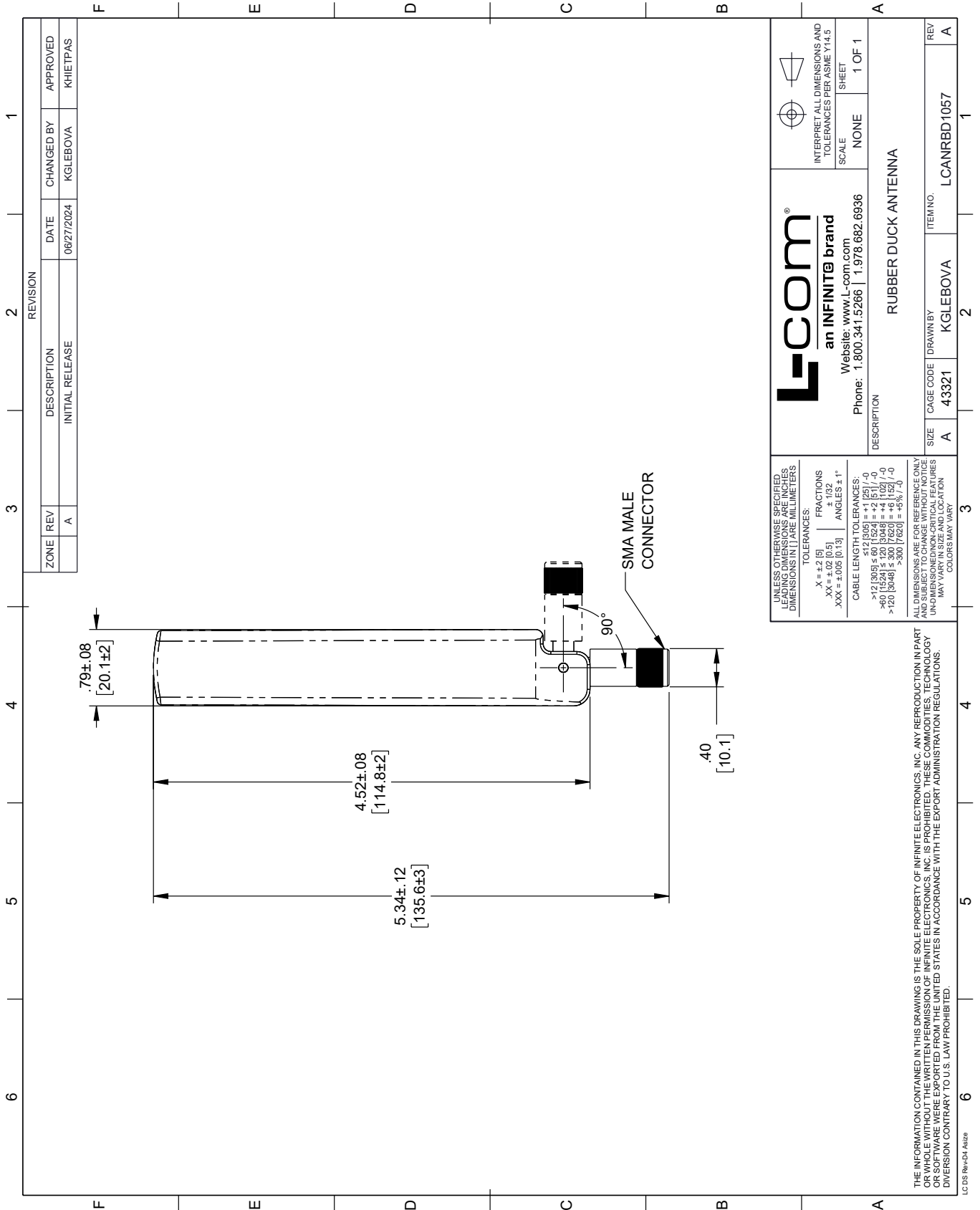
862 to 928 MHz Rubber Duck Antenna 3 dBi SMA Male Tilt Swivel from L-com has same day shipment for domestic and International orders. Our portfolio includes coaxial cable assemblies, connectors, adapters and custom products as well as lightning and surge protectors, NEMA rated enclosures, and an RF product line which includes antennas, amplifiers, passive, and active components.

URL: <https://www.l-com.com/862-928-mhz-rubber-duck-antenna-3-dbi-sma-male-tilt-swivel-lcanrbd1057-p.aspx>

The information contained within this document is accurate to the best of our knowledge and representative of the part described herein. It may be necessary to make modifications to the part and/or the documentation of the part in order to implement improvements. L-com reserves the right to make such changes as required. Unless otherwise stated, all specifications are nominal. L-com does not make any representation or warranty regarding the suitability of the part described herein for any particular purpose, and L-com does not assume liability arising out of the use of any part or document.

LCANRBD1057 CAD Drawing

862 to 928 MHz Rubber Duck Antenna 3 dBi SMA Male Tilt Swivel



REVISION		DATE	CHANGED BY	APPROVED
ZONE	REV	DESCRIPTION	INITIAL RELEASE	
	A			

L-com
an INFINITE brand
Website: www.L-com.com
Phone: 1.800.341.5266 | 1.978.682.6936

INTERPRET ALL DIMENSIONS AND TOLERANCES PER ASME Y14.5
SCALE: NONE
SHEET: 1 OF 1

DESCRIPTION: RUBBER DUCK ANTENNA

SIZE	CAGE CODE	DRAWN BY	ITEM NO.
A	43321	KGLEBOVA	LCANRBD1057

REV A

UNLESS OTHERWISE SPECIFIED, LEADING DIMENSIONS ARE IN INCHES. DIMENSIONS IN [] ARE MILLIMETERS.

TOLERANCES:
 .X = ±.2 [5]
 .XX = ±.02 [0.5]
 .XXX = ±.005 [0.13]

FRACTIONS: ± 1/32
 ANGLES: ± 1°

CABLE LENGTH TOLERANCES:
 ≤ 12 [305] ± .60 [15.24] = ± 2 [51] / -0
 > 12 [305] ≤ 60 [1524] = ± 4 [102] / -0
 > 60 [1524] ≤ 120 [3048] = ± 4 [102] / -0
 > 120 [3048] ≤ 300 [7620] = ± 8 [203] / -0

ALL DIMENSIONS ARE FOR REFERENCE ONLY. UNDIMENSIONED/NON-CRITICAL FEATURES MAY VARY IN SIZE AND LOCATION. COLORS MAY VARY.

THE INFORMATION CONTAINED IN THIS DRAWING IS THE SOLE PROPERTY OF INFINITE ELECTRONICS, INC. ANY REPRODUCTION IN PART OR WHOLE WITHOUT THE WRITTEN PERMISSION OF INFINITE ELECTRONICS, INC. IS PROHIBITED. THESE COMMODITIES, TECHNOLOGY OR SERVICES ARE EXPORTED FROM THE UNITED STATES IN ACCORDANCE WITH THE EXPORT ADMINISTRATION REGULATIONS. DIVERSION CONTRARY TO U.S. LAW PROHIBITED.

LC 05 Rev-D4 Atsize