

LSZH 1553 TRT Threaded Plug to TRT Threaded Plug  
Cable Assembly using TWCH-78-2 Coax, 1 FT



## LC3MSA00601-12

### Configuration

- Connector 1: TRT Threaded Plug
- Connector 2: TRT Threaded Plug
- Cable Type: TWCH-78-2

### Features

- MIL-STD-1553
- -30°C to +80°C
- 78 ohms
- ROHS Low Smoke Zero Halogen
- Non-Toxic

### Applications

- Military Contractors
- MIL-STD-1553
- Data
- Safer Environments
- Ventilation critical areas
- Hospitals

### Description

L-com's LC3MSA00601-12 is a LSZH 1553 TRT threaded plug to TRT threaded plug cable assembly using TWCH-78-2 coax, 1 FT and ships same-day. These flexible RF cable assemblies are ideal for applications where flexure is required. Our L-com TRT Threaded to TRT Threaded cable assembly has a plug to plug gender configuration with 78 Ohm flexible TWCH-78-2 series coax and operates to 500 MHz.

Custom versions of this TRT Threaded plug to TRT Threaded plug cable, along with the rest of L-com's other RF assemblies, can also be built and shipped same day. Other available RF cable assembly value added services from L-com include connector orientation or clocking, heat shrink booting and custom labeling. RF testing can also be performed to document the electrical performance of your cable assembly. Contact a sales representative for testing or custom RF cable quotes. Part number LC3MSA00601-12 L-com LSZH 1553 TRT Threaded Plug to TRT Threaded Plug Cable Assembly using TWCH-78-2 Coax, 1 FT data sheet PDF includes details of the RF product specifications, CAD drawing(s) and dimensions below.

### Electrical Specifications

Description	Minimum	Typical	Maximum	Units
Frequency Range	DC		500	MHz
Capacitance		21.2 [69.55]		pF/ft [pF/m]
Operating Voltage (AC)			1,000	Vrms

### Specifications by Frequency

Description	F1	F2	F3	F4	F5	Units
Frequency	10	50	100	200	500	MHz
Insertion Loss (Typ.)	0.222	0.251	0.275	0.305	0.36	dB

#### Electrical Specification Notes:

The Insertion Loss data above is based on the performance specifications of the coax and connectors used in this assembly. The Insertion Loss includes an estimated insertion loss of 0.1 dB per connector.

LSZH 1553 TRT Threaded Plug to TRT Threaded Plug  
Cable Assembly using TWCH-78-2 Coax, 1 FT



**LC3MSA00601-12**

**Mechanical Specifications**

**Cable Assembly**

Length\* 12 in [304.8 mm]  
Weight 0.204 lbs [92.53 g]

**Cable**

Cable Type TWCH-78-2  
Impedance 78 Ohms  
Inner Conductor Type Stranded  
Inner Conductor Material and Plating Copper, Silver  
Dielectric Type PE  
Shield Layer 1 Silver Plated Copper  
Jacket Material HF POF, Blue

One Time Minimum Bend Radius 1.25 in [31.75 mm]

**Connectors**

Description	Connector 1	Connector 2
Type	TRT Threaded Plug	TRT Threaded Plug
Impedance	78 Ohms	78 Ohms
Contact Material and Plating	Bronze, Gold 30 micro inches	Bronze, Gold 30 micro inches
Contact Plating Specification	ASTM-B-488	ASTM-B-488
Dielectric Type	Teflon	Teflon
Outer Conductor Material and Plating	Phosphor Bronze, Gold	Phosphor Bronze, Gold
Outer Conductor Plating Specification	30 micro inches	30 micro inches
Body Material and Plating	Brass, Nickel	Brass, Nickel
Body Plating Specification	ASTM-B-733	ASTM-B-733

**Environmental Specifications**

**Temperature**

Operating Range -30 to +80 deg C

**Compliance Certifications** (see [product page](#) for current document)

**Plotted and Other Data**

Notes:

LSZH 1553 TRT Threaded Plug to TRT Threaded Plug  
Cable Assembly using TWCH-78-2 Coax, 1 FT



## LC3MSA00601-12

### How to Order

Part Number Configuration:

**LC3MSA00601**

- **xx**

**uu**

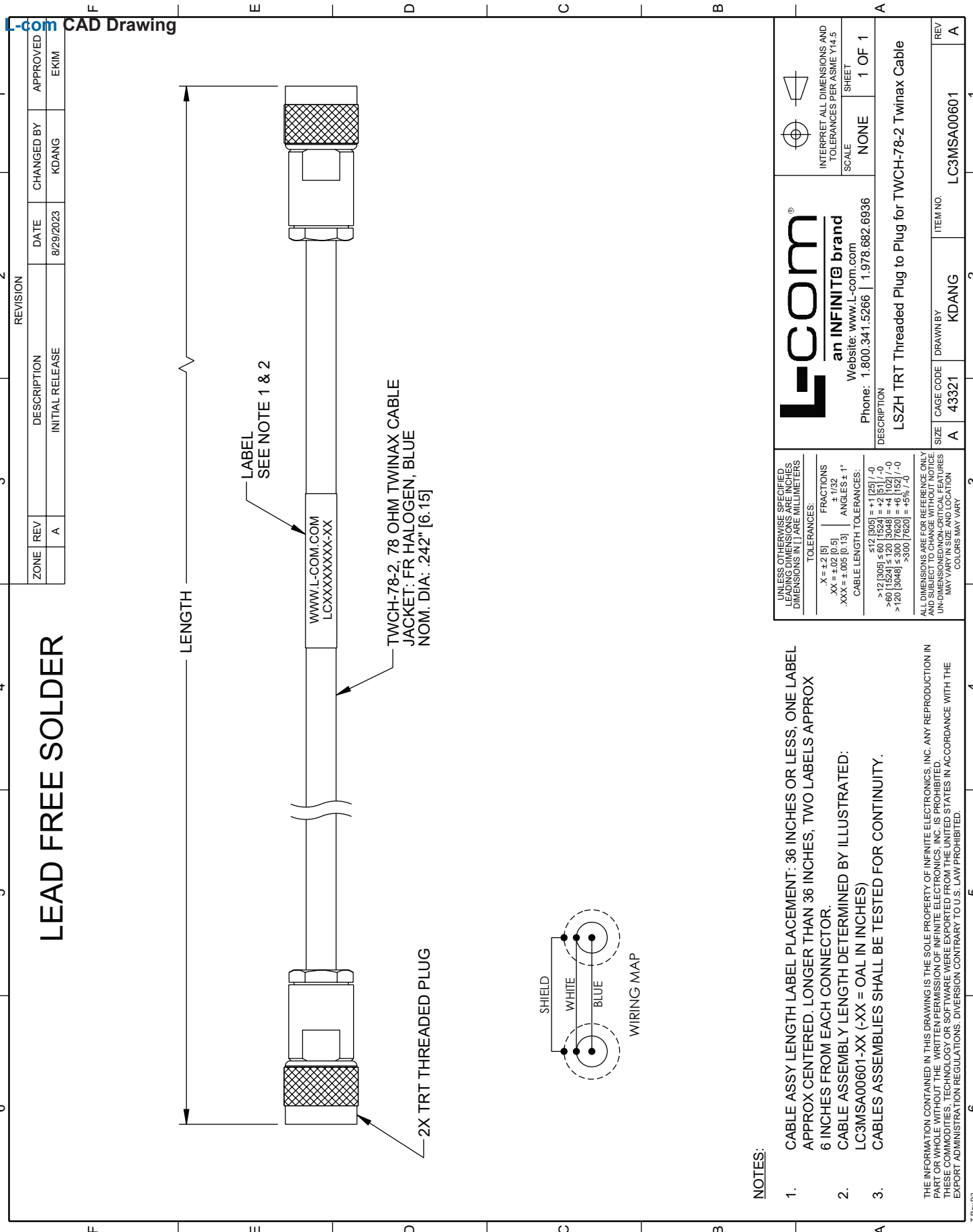
Unit of Measure:  
cm = Centimeters  
<blank> = Inches  
Length  
Base Number

Example: LC3MSA00601-12 = 12 inches long cable  
LC3MSA00601-100cm = 100 cm long cable

LSZH 1553 TRT Threaded Plug to TRT Threaded Plug Cable Assembly using TWCH-78-2 Coax, 1 FT from L-com has same day shipment for domestic and International orders. L-com is a leading manufacturer of wired and wireless connectivity products and committed to in-stock availability and same day shipping. Our portfolio includes coaxial cable assemblies, connectors, adapters and custom products as well as lightning and surge protectors, NEMA rated enclosures, and an RF product line which includes antennas, amplifiers, passive, and active components.

The information contained within this document is accurate to the best of our knowledge and representative of the part described herein. It may be necessary to make modifications to the part and/or the documentation of the part in order to implement improvements. L-com reserves the right to make such changes as required. Unless otherwise stated, all specifications are nominal. L-com does not make any representation or warranty regarding the suitability of the part described herein for any particular purpose, and L-com does not assume liability arising out of the use of any part or document contained within this document is accurate to the best of our knowledge and representative of the part described herein. It may be necessary to make modifications to the part and/or the documentation of the part in order to implement improvements. L-com reserves the right to make such changes as required. Unless otherwise stated, all specifications are nominal. L-com does not make any representation or warranty regarding the suitability of the part described herein for any particular purpose, and L-com does not assume liability arising out of the use of any part or document.

LSZH 1553 TRT Threaded Plug to TRT Threaded Plug Cable Assembly using TWCH-78-2 Coax, 1 FT



**L-com**  
an INFINITE® brand  
Website: www.L-com.com  
Phone: 1.800.341.5266 | 1.978.682.6936

LSZH TRT Threaded Plug to Plug for TWCH-78-2 Twinax Cable

UNLESS OTHERWISE SPECIFIED, LEADING DIMENSIONS ARE IN INCHES. DIMENSIONS IN [ ] ARE MILLIMETERS.

TOLERANCES:

.X = ±.2 [5]	FRACTIONS ± 1/32
.XX = ±.02 [0.5]	ANGLES ± 1°
.XXX = ±.005 [0.13]	

CABLE LENGTH TOLERANCES:

< 12 [305]	±.125 [-0]
> 12 [305] &lt; 60 [1524]	±.25 [-0]
> 60 [1524] &lt; 120 [3048]	±.5 [-0]
> 120 [3048] &lt; 300 [7620]	±.75 [-0]
> 300 [7620]	±1.5 [-0]

ALL DIMENSIONS ARE FOR REFERENCE ONLY AND SUBJECT TO CHANGE WITHOUT NOTICE. UNDIMENSIONED NON-CRITICAL FEATURES MAY VARY. DIMENSIONAL VARIATION COLORS MAY VARY.

INTERPRET ALL DIMENSIONS AND TOLERANCES PER ASME Y14.5

SCALE: NONE

SHEET: 1 OF 1

SIZE: A

CAGE CODE: 43321

DRAWN BY: KDANG

ITEM NO.: LC3MSA00601

REV: A

- NOTES:**
- CABLE ASSY LENGTH LABEL PLACEMENT: 36 INCHES OR LESS, ONE LABEL APPROX CENTERED. LONGER THAN 36 INCHES, TWO LABELS APPROX 6 INCHES FROM EACH CONNECTOR.
  - CABLE ASSEMBLY LENGTH DETERMINED BY ILLUSTRATED: LC3MSA00601-XX (-XX = OAL IN INCHES)
  - CABLES ASSEMBLIES SHALL BE TESTED FOR CONTINUITY.
- THE INFORMATION CONTAINED IN THIS DRAWING IS THE SOLE PROPERTY OF INFINITE ELECTRONICS, INC. ANY REPRODUCTION IN WHOLE OR IN PART WITHOUT THE WRITTEN PERMISSION OF INFINITE ELECTRONICS, INC. IS PROHIBITED. THESE COMMODITIES, TECHNOLOGY OR SOFTWARE WERE EXPORTED FROM THE UNITED STATES IN ACCORDANCE WITH THE EXPORT ADMINISTRATION REGULATIONS. DIVERSION CONTRARY TO U.S. LAW PROHIBITED.