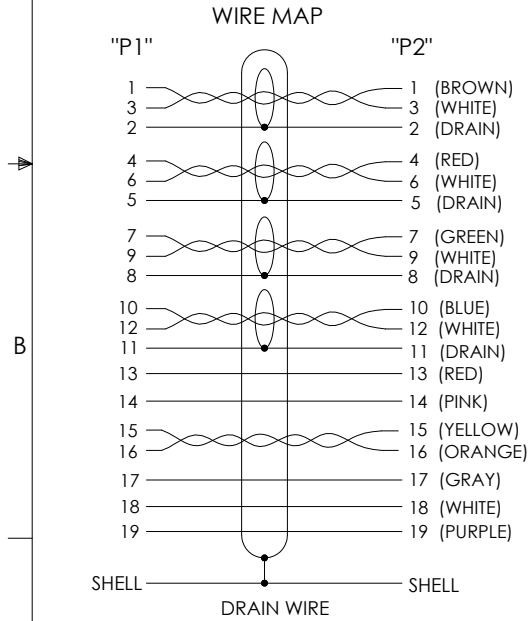
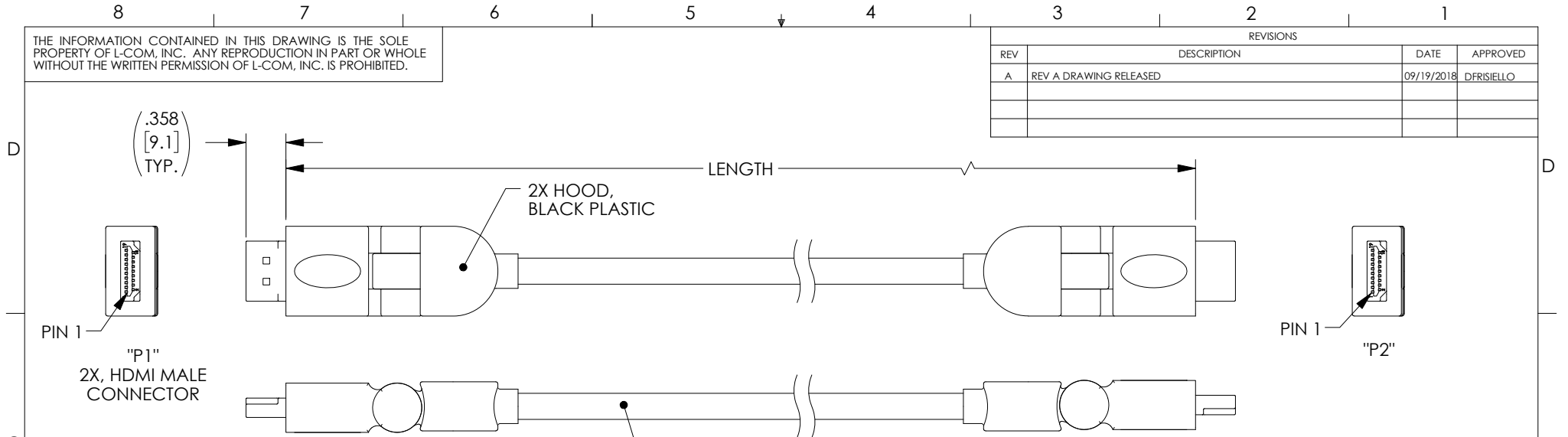


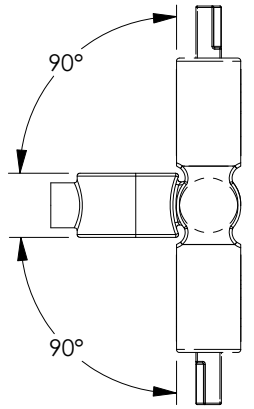
THE INFORMATION CONTAINED IN THIS DRAWING IS THE SOLE PROPERTY OF L-COM, INC. ANY REPRODUCTION IN PART OR WHOLE WITHOUT THE WRITTEN PERMISSION OF L-COM, INC. IS PROHIBITED.

REVISIONS			
REV	DESCRIPTION	DATE	APPROVED
A	REV A DRAWING RELEASED	09/19/2018	DFRISIELLO



UL20276
 (4) 30AWG INDIVIDUALLY SHIELDED TWISTED PAIRS,
 (1) 30AWG UNSHIELDED TWISTED PAIR,
 (5) 30AWG INDIVIDUAL CONDUCTORS,
 OVERALL SHIELD: ALUMINUM MYLAR FOIL SHIELD PLUS
 COPPER BRAID SHIELD WITH DRAIN WIRE,
 OUTER JACKET: PVC, BLACK

PART NUMBER	LENGTH	
	MM	INCHES
VHA00015-1M	1000 +51/-0	39.37 +2.0/-0
VHA00015-2M	2000 +102/-0	78.74 +4.0/-0
VHA00015-3M	3000 +102/-0	118.11 +4.0/-0
VHA00015-4M	4000 +152/-0	157.48 +6.0/-0



REGULATORY COMPLIANCE:
 CE2011/65/EU (RoHS DIRECTIVE)

NOTES:
ELECTRICAL:
 1. CABLE ASSEMBLY SHALL BE TESTED FOR CONTINUITY.
 2. VOLTAGE TEST: DC 300V 10MS
 3. INSULATION RESISTANCE: 5.0M OHM/MIN.
 4. CONDUCTOR RESISTANCE: 5.0 OHM/MAX.
PACKAGING:
 CABLE ASSEMBLY SHALL BE INDIVIDUALLY PACKAGED IN ACCORDANCE WITH L-COM SPECIFICATION LSP-010.

UNLESS OTHERWISE SPECIFIED, DIMENSIONS ARE IN INCHES [mm] OVERALL CABLE LENGTH TOLERANCE: ≤12 [305] = +1 [25] / -0 >12 [305] ≤60 [1524] = +2 [51] / -0 >60 [1524] ≤120 [3048] = +4 [102] / -0 >120 [3048] ≤300 [7620] = +6 [152] / -0 >300 [7620] = +5% / -0% ALL OTHER DIMENSIONAL TOLERANCES: .X = ± .2 [5.08] .XX = ± .02 [1.51] .XXX = ± .005 [1.13]	APPROVALS	DATE	50 HIGH STREET NORTH ANDOVER, MA 01845
	DRAWN BY DFRISIELLO	09/19/2018	
	CHECKED BY ELAMOTT	09/19/2018	PRODUCT DESCRIPTION ASSEMBLY, SWIVEL, HDMI 19M
	APPROVED BY BGATES	09/19/2018	
SIZE A CAGE CODE 43321 DWG. NO. VHA00015		SCALE: NONE	CAD FILE: VHA00015.SLDDRW SHEET 1 OF 1