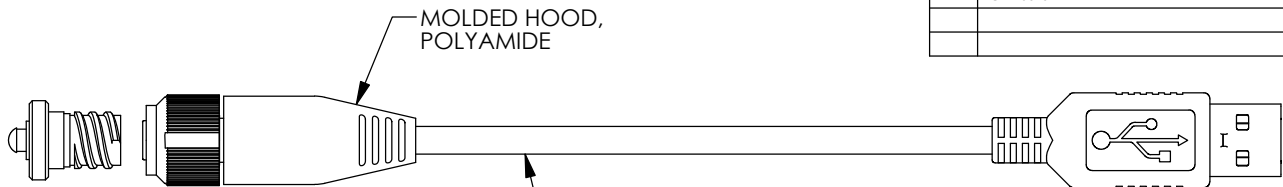


THE INFORMATION CONTAINED IN THIS DRAWING IS THE SOLE PROPERTY OF L-COM, INC. ANY REPRODUCTION IN PART OR WHOLE WITHOUT THE WRITTEN PERMISSION OF L-COM, INC. IS PROHIBITED.

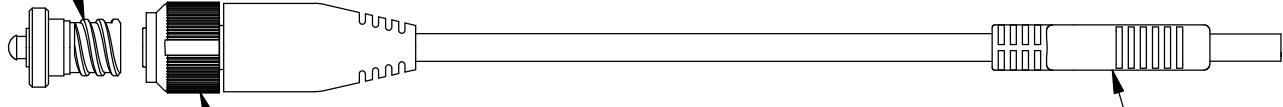
REVISIONS			
REV	DESCRIPTION	DATE	APPROVED
A	INITIAL RELEASE	11/25/2019	GUTTADAURO
B	ECN 10616 EDIT TEXT	08/07/2020	GUTTADAURO



ONE 28AWG STRANDED TINNED COPPER TWISTED PAIR
TWO 22AWG CONDUCTORS STRANDED TINNED COPPER CONDUCTORS
OVERALL ALUMINIZED POLYESTER SHIELD WITH STRANDED TINNED COPPER DRAIN WIRE PLUS TINNED COPPER BRAIDED SHIELD.
JACKET: LSZH, BLACK
CABLE UL VW-1 RATED

PROTECTIVE COVER

"P1"

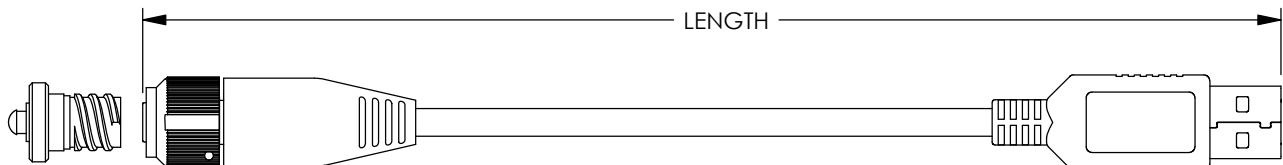


"P2"

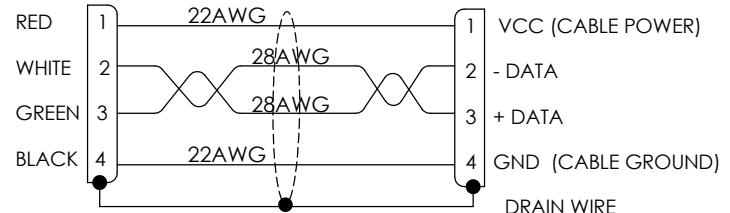
B
MIGHTY MOUSE 801-007-16NF6-4PA
PLUG CONNECTOR, 4 PIN CONTACTS, ALUMINUM/CADMIUM FINISH W/ OLIVE DRAB CHROMATE

USB SERIES "A" PLUG
MOLDED HOOD
LSZH

LENGTH



"P1" WIRING DIAGRAM "P2"


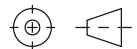


MODEL NUMBER	LENGTH FEET [METER]
USB228-MMZ-1F	1 [.30]
USB228-MMZ-3F	3 [.91]
USB228-MMZ-5F	5 [1.52]
USB228-MMZ-10F	10 [3.05]

NOTES:

- CABLE ASSEMBLY SHALL HAVE 360° SHIELD TERMINATION.
- TEST ASSEMBLY FOR SHORTS, CONTINUITY, AND INSULATION RESISTANCE 200 MEGAOHMS MIN.
- CABLE ASSEMBLY SHALL MEET USB 2.0 REQUIREMENTS.
- TETHER FOR PROTECTIVE COVER INCLUDED BUT NOT SHOWN.
- LABEL SHALL BE PLACED ON CABLE WITH P/N AND DATE CODE.
- CABLE ASSEMBLY SHALL BE INDIVIDUALLY PACKAGED IN ACCORDANCE WITH L-COM SPECIFICATION PS-0031.

B

UNLESS OTHERWISE SPECIFIED, DIMENSIONS ARE IN INCHES [mm] OVERALL CABLE LENGTH TOLERANCE: ≤12 [305] = +1 [25] / -0 >12 [305] ≤60 [1524] = +2 [51] / -0 >60 [1524] ≤120 [3048] = +4 [102] / -0 >120 [3048] ≤300 [7620] = +6 [152] / -0 >300 [7620] = +5% / -0 ALL OTHER DIMENSIONAL TOLERANCES: .X = ± .2 [5] FRACTIONS ± 1/32 .XXX = ± .005 [13] ANGLES ± 1°	APPROVALS	DATE	 50 High Street, West Mill, North Andover, MA 01845 USA. Phone: 1.800.341.5266 1.978.682.6936				
	DRAWN BY BPUCHASKI	11/25/2019		CATEGORY USB			
THIRD-ANGLE PROJECTION	CHECKED BY DFRISIELLO	11/25/2019	PRODUCT DESCRIPTION USB 2.0 MM-M AM 901 AL/CD OLIVE LSZH W/DC				
	APPROVED BY GUTTADAURO	11/25/2019	<table border="1"> <tr> <td>SIZE A</td> <td>CAGE CODE 43321</td> <td>DWG. NO. USB228-MMZ</td> <td>REV. B</td> </tr> </table>	SIZE A	CAGE CODE 43321	DWG. NO. USB228-MMZ	REV. B
SIZE A	CAGE CODE 43321	DWG. NO. USB228-MMZ	REV. B				
COLOR VARIATIONS MAY OCCUR		SCALE: NONE	CAD FILE: USB228-MMZ.SLDDRW				
		SHEET 1 OF 1					