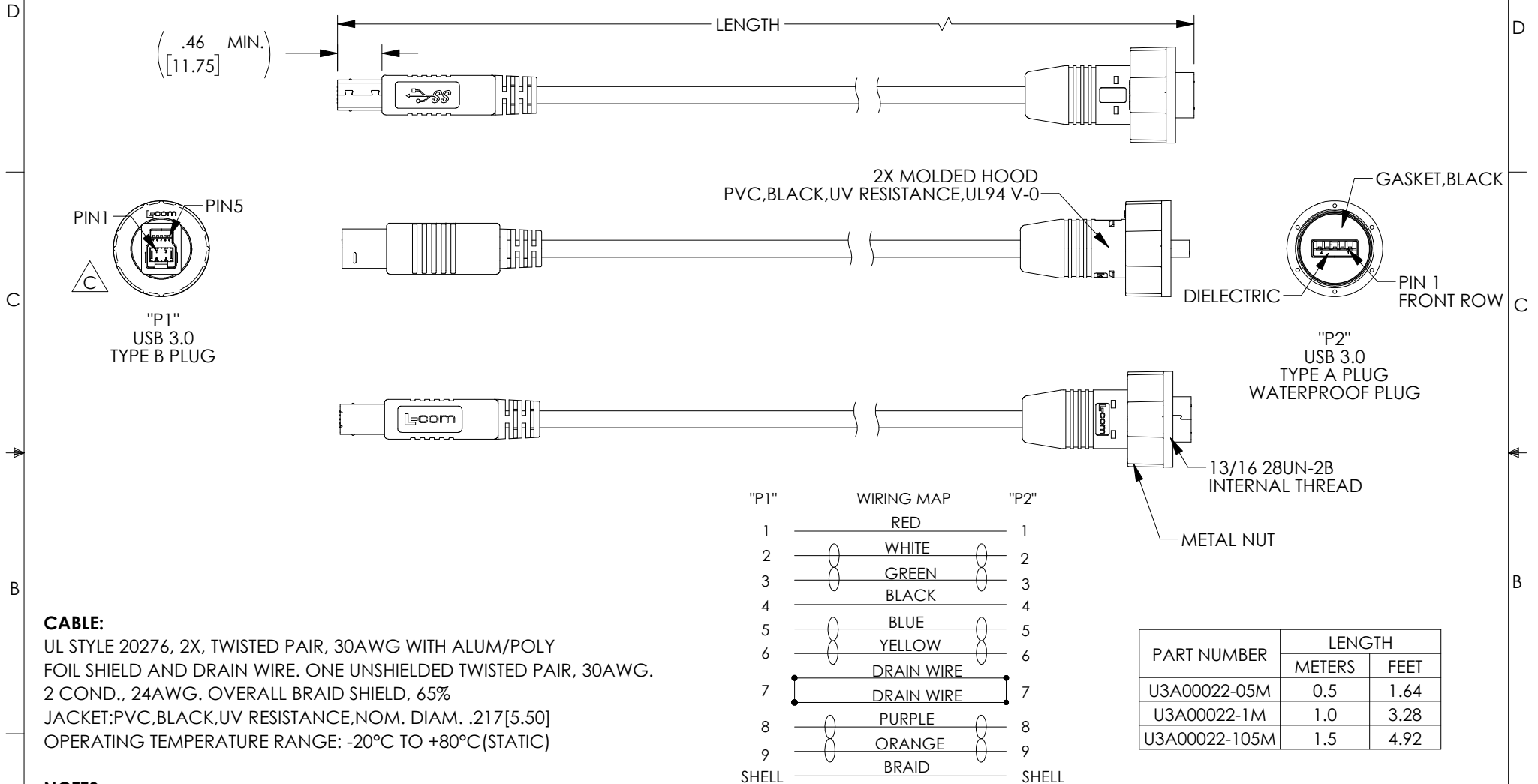


THE INFORMATION CONTAINED IN THIS DRAWING IS THE SOLE PROPERTY OF L-COM, INC. ANY REPRODUCTION IN PART OR WHOLE WITHOUT THE WRITTEN PERMISSION OF L-COM, INC. IS PROHIBITED.

REVISIONS			
REV	DESCRIPTION	DATE	APPROVED
A	CN INITIAL RELEASE	01/28/2019	BGATES
B	ECN 10042 :REM LOGO DESCRIPTION AND SHOW NUT IN THE P1 END VIEW	08/20/19	DGUTTADAURO
C	ECN 10454: UPDATE B PLUG VIEW	03/31/2020	DGUTTADAURO



PART NUMBER	LENGTH	
	METERS	FEET
U3A00022-05M	0.5	1.64
U3A00022-1M	1.0	3.28
U3A00022-105M	1.5	4.92

CABLE:
 UL STYLE 20276, 2X, TWISTED PAIR, 30AWG WITH ALUM/POLY FOIL SHIELD AND DRAIN WIRE. ONE UNSHIELDED TWISTED PAIR, 30AWG. 2 COND., 24AWG. OVERALL BRAID SHIELD, 65% JACKET:PVC, BLACK, UV RESISTANCE, NOM. DIAM. .217[5.50] OPERATING TEMPERATURE RANGE: -20°C TO +80°C (STATIC)

NOTES:
 1. INGRESS PROTECTION RATING IS IP67 (P2 ONLY, MATED).
 2. CABLE ASSEMBLY SHALL BE TESTED FOR CONTINUITY.
 3. CABLE ASSEMBLY SHALL HAVE 360° SHIELD TERMINATION.
 4. CABLE ASSEMBLY MUST MEET USB 3.0 REQUIREMENTS.
 5. CONNECTOR CONTACTS HAVE 30 μINCHES GOLD PLATING OVER NICKEL PLATING.
 6. CABLE ASSEMBLY SHALL BE INDIVIDUALLY PACKAGED IN ACCORDANCE WITH L-COM SPECIFICATION PS-0031.

UNLESS OTHERWISE SPECIFIED, DIMENSIONS ARE IN INCHES [mm] OVERALL CABLE LENGTH TOLERANCE: ≤12 [305] = +1 [25] / -0 >12 [305] ≤60 [1524] = +2 [51] / -0 >60 [1524] ≤120 [3048] = +4 [102] / -0 >120 [3048] ≤300 [7620] = +6 [152] / -0 >300 [7620] = +5% / -0 ALL OTHER DIMENSIONAL TOLERANCES: .X = ± .2 [5] FRACTIONS ± 1/32 .XX = ± .02 [.5] ANGLES ± 1° .XXX = ± .005 [.13]	APPROVALS DRAWN BY DCUI CHECKED BY SPAN APPROVED BY BGATES	DATE 01/25/2019 01/25/2019 01/25/2019	50 High Street, West Mill, North Andover, MA 01845 USA. Phone: 1.800.341.5266 1.978.682.6936	
	CONFIGURATION DETAILS OF UNDIMENSIONED FEATURES MAY VARY			CATEGORY USB3.0
	THIRD-ANGLE PROJECTION 	COLOR VARIATIONS MAY OCCUR	PRODUCT DESCRIPTION CA, USB 3.0 BM TO WATERPROOF AM SHLD	SIZE A CAGE CODE 43321 DWG. NO. U3A00022 REV. C
	SCALE: NONE CAD FILE: U3A00022.SLDDRW		SHEET 1 OF 1	