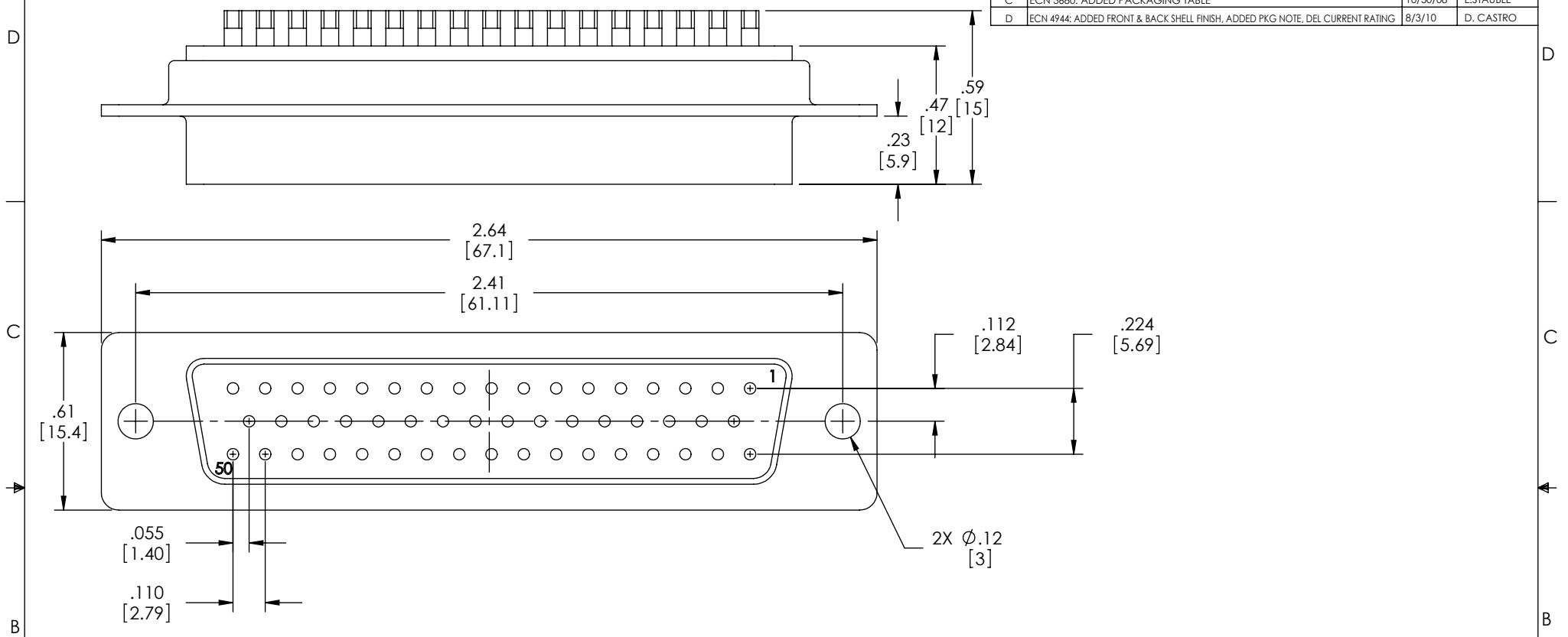


THE INFORMATION CONTAINED IN THIS DRAWING IS THE SOLE PROPERTY OF L-COM, INC. ANY REPRODUCTION IN PART OR WHOLE WITHOUT THE WRITTEN PERMISSION OF L-COM, INC. IS PROHIBITED.

REVISIONS			
REV	DESCRIPTION	DATE	APPROVED
A	INITIAL RELEASE	12/09/03	B.MAZEJKA
B	ECN 1682 - CHG'D COMP SPEC TABLE, GOLD FLASH PLATED	02/27/04	B.MAZEJKA
C	ECN 3680: ADDED PACKAGING TABLE	10/30/08	E.STAUBLE
D	ECN 4944: ADDED FRONT & BACK SHELL FINISH, ADDED PKG NOTE, DEL CURRENT RATING	8/3/10	D. CASTRO



NOTES:

MATERIAL:

CONNECTOR SHELL: STEEL
 CONNECTOR INSULATOR: THERMOPLASTIC, UL94V-0 RATED
 CONTACTS: COPPER ALLOY

CATALOG #	PACKAGING
SD50S	1/BAG
SD50S-TRAY	40/TRAY

FINISH:

FRONT SHELL: NICKEL PLATED
 BACK SHELL: TIN PLATED
 CONTACTS: GOLD FLASH IN CONTACT AREA OVER NICKEL PLATE
 SOLDER CUPS: TIN PLATED

ELECTRICAL:

DIELECTRIC WITHSTANDING VOLTAGE: 1000 VAC rms
 INSULATION RESISTANCE: 5000MΩ @ 500VDC

MISCELLANEOUS:

OPERATING TEMPERATURE: -55°C TO +105°C
 CONNECTOR SHALL BE PACKAGED IN ACCORDANCE WITH L-COM SPEC. PS-0031.

UNLESS OTHERWISE SPECIFIED, DIMENSIONS ARE IN INCHES [mm] OVERALL CABLE LENGTH TOLERANCE: ≤12 [305] = +1 [25] / -0 >12 [305] ≤60 [1524] = +2 [51] / -0 >60 [1524] ≤120 [3048] = +4 [102] / -0 >120 [3048] ≤300 [7620] = +6 [152] / -0 >300 [7620] = +3% / -0% ALL OTHER DIMENSIONAL TOLERANCES: .X = ±.2 .XX = ±.02 .XXX = ±.005	APPROVALS DRAWN BY B.MAZEJKA CHECKED BY C.McCORMICK APPROVED BY D.PARHAM	DATE 11/10/2003 12/08/2003 12/08/2003	45 BEECHWOOD DRIVE NORTH ANDOVER, MA 01845				
	CATEGORY DSUB			PRODUCT DESCRIPTION DB50P SOLDER CUP CONNECTOR			
	PROJECTION 	CONFIGURATION DETAILS OF UNDIMENSIONED FEATURES MAY VARY	COLOR VARIATIONS MAY OCCUR		SIZE A	FSCM NO. 43321	DWG. NO. SD50S
	SCALE: NONE		CAD FILE: SD50S.SLDDRW		SHEET 1 OF 1		