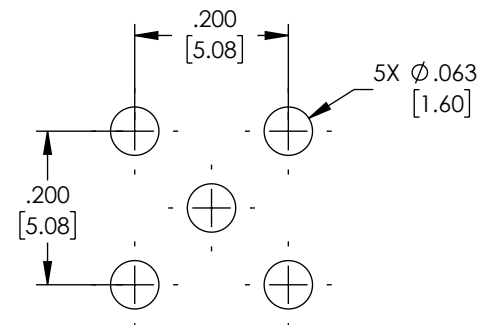
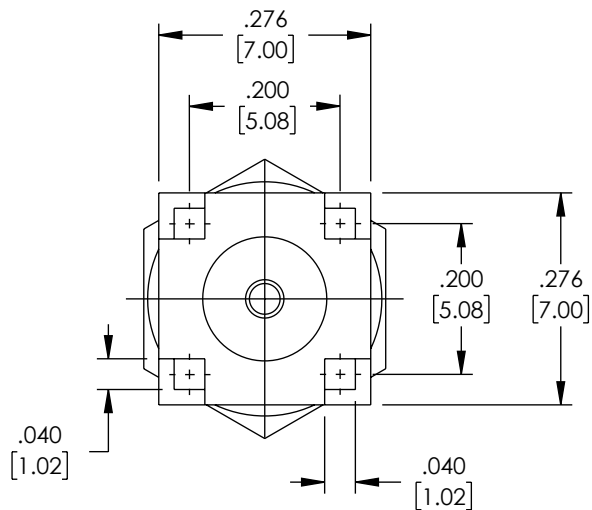
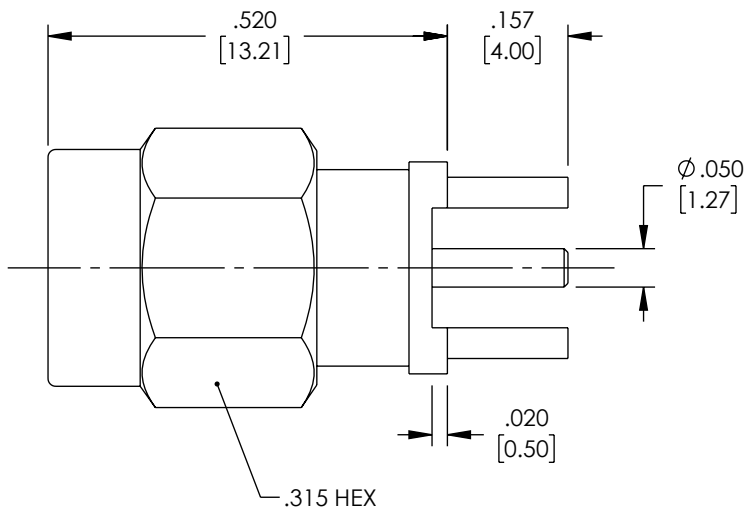


THE INFORMATION CONTAINED IN THIS DRAWING IS THE SOLE PROPERTY OF L-COM, INC. ANY REPRODUCTION IN PART OR WHOLE WITHOUT THE WRITTEN PERMISSION OF L-COM, INC. IS PROHIBITED.

REVISION					
ZONE	REV	DESCRIPTION	DATE	CHANGED BY	APPROVED
	A	INITIAL RELEASE	3/6/2023	DMAY	AGANWANI



RECOMMENDED MOUNTING HOLE

MATERIAL & FINISH:

1. BODY: BRASS, GOLD PLATED
2. CENTER CONTACT: BRASS, GOLD PLATED
3. INSULATOR: PTFE
4. COUPLING NUT: BRASS, GOLD PLATED
5. RETAINING RING: BERYLLIUM COPPER ALLOY, NICKEL PLATED
6. GASKET: MVQ (SILICONE RUBBER)

ELECTRICAL DATA:

1. IMPEDANCE: 50 Ω
2. FREQUENCY RANGE: DC~18 GHz


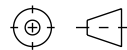
ENVIRONMENTAL DATA:

1. TEMPERATURE RANGE: -55°C~+125°C

COMPONENT SHALL BE INDIVIDUALLY PACKAGED IN ACCORDANCE WITH L-COM SPECIFICATION PS-0031.

REGULATORY COMPLIANCE:

EU RoHS DIRECTIVE (MOST RECENT RELEASED VERSION)

UNLESS OTHERWISE SPECIFIED, DIMENSIONS ARE IN INCHES [mm] OVERALL CABLE LENGTH TOLERANCE: ≤12 [305] = +1 [25] / -0 >12 [305] ≤60 [1524] = +2 [51] / -0 >60 [1524] ≤120 [3048] = +4 [102] / -0 >120 [3048] ≤300 [7620] = +6 [152] / -0 >300 [7620] = +5% / -0 ALL OTHER DIMENSIONAL TOLERANCES: .X = ± .2 [5] FRACTIONS ± 1/32 .XX = ± .02 [5] ANGLES ± 1° .XXX = ± .005 [13]	APPROVALS DMAY	DATE 3/6/2023	 50 High Street, West Mill, North Andover, MA 01845 USA. Phone: 1.800.341.5266 1.978.682.6936
	CHECKED BY HBAKKE	3/7/2023	
THIRD-ANGLE PROJECTION 	APPROVED BY AGANWANI	3/7/2023	PRODUCT DESCRIPTION RF PCB CONNECTOR, SMA, MALE, UP TO 18 GHz, THROUGH HOLE, STRAIGHT
	CONFIGURATION DETAILS OF UNDIMENSIONED FEATURES MAY VARY	COLOR VARIATIONS MAY OCCUR	SIZE A
			CAGE CODE 43321
			ITEM NO. RFPCB-SMA-MS18G-36
			REV. A
			SCALE: NONE CAD FILE: RFPCB-SMA-MS18G-36.SLDDRW SHEET 1 OF 1