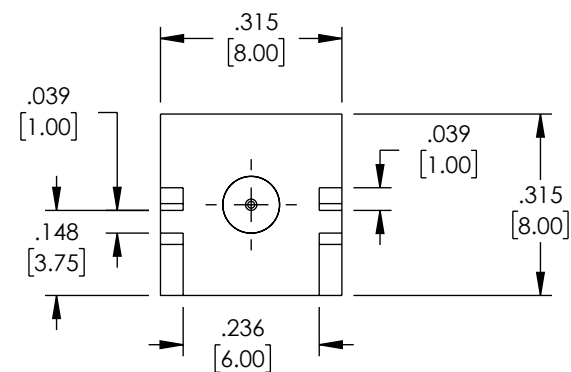
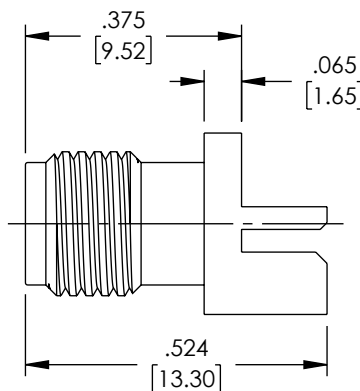
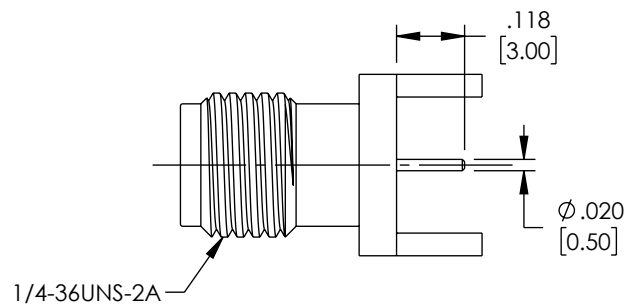


THE INFORMATION CONTAINED IN THIS DRAWING IS THE SOLE
PROPERTY OF L-COM, INC. ANY REPRODUCTION IN PART OR WHOLE
WITHOUT THE WRITTEN PERMISSION OF L-COM, INC. IS PROHIBITED.

REVISION					
ZONE	REV	DESCRIPTION	DATE	CHANGED BY	APPROVED
	A	INITIAL RELEASE	03/06/2023	DMAY	AGANWANI



ELECTRICAL DATA:

1. IMPEDANCE: 50 OHMS
2. FREQUENCY RANGE: DC~18 GHz
3. VSWR: 1.20 MAX.
4. INSERTION LOSS: 0.3 DB MAX.
5. RF LEAKAGE: -90 DB
6. INSULATION RESISTANCE: 5000 MΩ
7. DIELECTRIC WITHSTAND VOLTAGE: 1000 VRMS MAX.

MECHANICAL DATA:

1. MATING CYCLE: 500
2. RECOMMENDED MATING TORQUE: 0.9-1.13 NM
3. PROOF TORQUE: 1.7 NM
4. COUPLING NUT RETENTION FORCE: 270N
5. CENTER CONTACT RETENTION FORCE: 2.6 POUND (AXIAL)

ENVIRONMENTAL DATA:

1. OPERATING TEMPERATURE: -65°C~+165°C


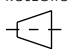
COMPONENT SHALL BE INDIVIDUALLY PACKAGED IN
ACCORDANCE WITH L-COM SPECIFICATION PS-0031.

REGULATORY COMPLIANCE:

EU RoHS DIRECTIVE (MOST RECENT RELEASED VERSION)

MATERIAL & FINISH:

1. BODY: BRASS, GOLD PLATED
2. CENTER CONTACT: BERYLLIUM COPPER ALLOY, GOLD PLATED
3. INSULATOR: PTFE

UNLESS OTHERWISE SPECIFIED, DIMENSIONS ARE IN INCHES [mm]		APPROVALS		DATE		<div><div>L-com™</div><div>an INFINITI® brand</div></div> <div>50 High Street, West Mill, North Andover, MA 01845 USA Phone: 1.800.341.5266 1.978.682.6936</div>	
OVERALL CABLE LENGTH TOLERANCE: ≤12 [305] = +1 [25] / -0 >12 [305] ≤60 [1524] = +2 [51] / -0 >60 [1524] ≤120 [3048] = +4 [102] / -0 >120 [3048] ≤300 [7620] = +6 [152] / -0 >300 [7620] = +5% / -0		DRAWN BY DMAY		03/06/2023			
ALL OTHER DIMENSIONAL TOLERANCES: .X = ± .2 [5] FRACTIONS ± 1/32 .XX = ± .02 [.5] ANGLES ± 1° .XXX = ± .005 [.13]		CHECKED BY HBAKKE		03/07/2023			
		APPROVED BY AGANWANI		03/07/2023			
		CONFIGURATION DETAILS OF UNDIMENSIONED FEATURES MAY VARY		PRODUCT DESCRIPTION RF PCB CONNECTOR, SMA, FEMALE, UP TO 18 GHz, EDGE MOUNT, STRAIGHT			
THIRD-ANGLE PROJECTION <div><div></div><div></div></div>		COLOR VARIATIONS MAY OCCUR		SIZE A	CAGE CODE 43321	ITEM NO. RFPCB-SMA-FS18G-56	REV A
				SCALE: NONE	CAD FILE: RFPCB-SMA-FS18G-56.SLDDRW		SHEET 1 OF 1

CATEGORY
RF INTERCONNECTS

PRODUCT DESCRIPTION
RF PCB CONNECTOR, SMA, FEMALE,
UP TO 18 GHz, EDGE MOUNT, STRAIGHT

REV.
A