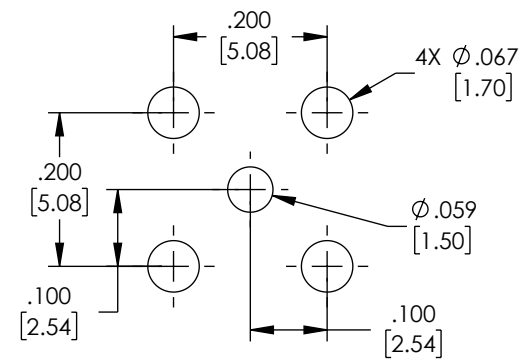
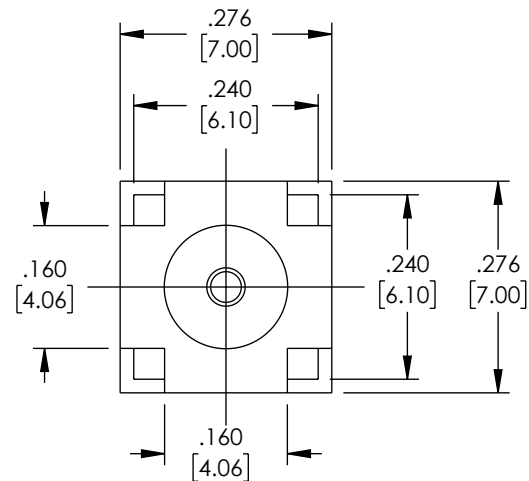
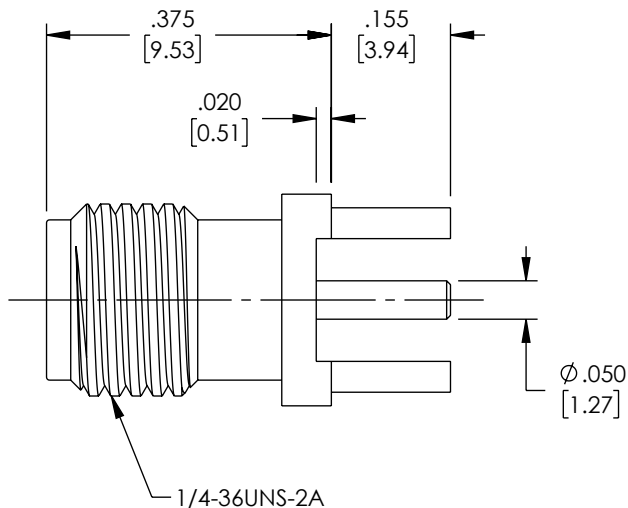


THE INFORMATION CONTAINED IN THIS DRAWING IS THE SOLE PROPERTY OF L-COM, INC. ANY REPRODUCTION IN PART OR WHOLE WITHOUT THE WRITTEN PERMISSION OF L-COM, INC. IS PROHIBITED.

REVISION					
ZONE	REV	DESCRIPTION	DATE	CHANGED BY	APPROVED
	A	INITIAL RELEASE	03/08/2023	DMAY	AGANWANI



RECOMMENDED MOUNTING HOLE

#### MATERIAL & FINISH:

1. BODY: BRASS, GOLD PLATED
2. CENTER CONTACT: BERYLLIUM COPPER ALLOY, GOLD PLATED
3. INSULATOR: PTFE

#### ELECTRICAL DATA:

1. IMPEDANCE: 50  $\Omega$
2. FREQUENCY RANGE: DC~18 GHz

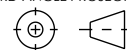
#### ENVIRONMENTAL DATA:

1. TEMPERATURE RANGE: -55°C~+125°C

COMPONENT SHALL BE INDIVIDUALLY PACKAGED IN ACCORDANCE WITH L-COM SPECIFICATION PS-0031.

#### REGULATORY COMPLIANCE:

EU RoHS DIRECTIVE (MOST RECENT RELEASED VERSION)

UNLESS OTHERWISE SPECIFIED, DIMENSIONS ARE IN INCHES [mm]		APPROVALS		DATE		<div>L-com™</div> <div>an INFINIT® brand</div>		50 High Street, West Mill, North Andover, MA 01845 USA Phone: 1.800.341.5266 1.978.682.6936	
OVERALL CABLE LENGTH TOLERANCE: ≤12 [305] = +1 [25] / -0 >12 [305] ≤60 [1524] = +2 [51] / -0 >60 [1524] ≤120 [3048] = +4 [102] / -0 >120 [3048] ≤300 [7620] = +6 [152] / -0 >300 [7620] = +5% / -0		DRAWN BY DMAY		3/8/2023					
		CHECKED BY HBAKKE		3/9/2023					
		APPROVED BY AGANWANI		3/9/2023					
ALL OTHER DIMENSIONAL TOLERANCES: .X = ± .2 [5]      FRACTIONS .XX = ± .02 [.5]      ± 1/32 .XXX = ± .005 [.13]      ANGLES ± 1°		CONFIGURATION DETAILS OF UNDIMENSIONED FEATURES MAY VARY		PRODUCT DESCRIPTION RF PCB CONNECTOR, SMA, FEMALE UP TO 18 GHz, THROUGH HOLE, STRAIGHT					
				RF INTERCONNECTS					
THIRD-ANGLE PROJECTION		COLOR VARIATIONS MAY OCCUR		SIZE		CAGE CODE		ITEM NO.	
				A		43321		RFPCB-SMA-FS18G-44	
				SCALE: NONE		CAD FILE: RFPCB-SMA-FS18G-44.SLDDRW		SHEET 1 OF 1	