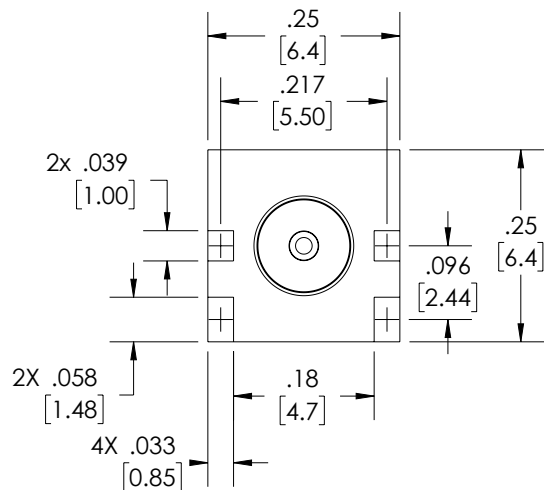
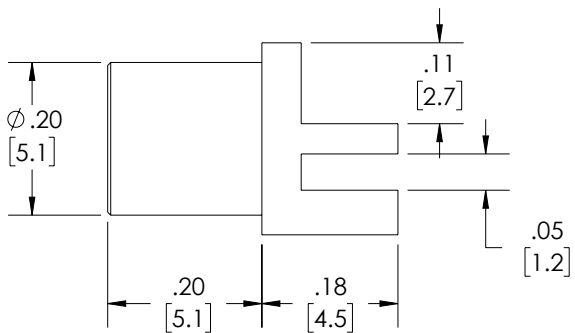
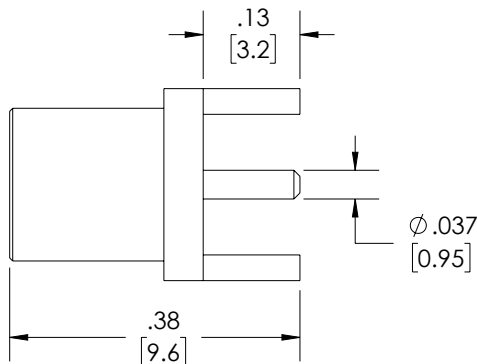
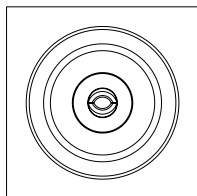


THE INFORMATION CONTAINED IN THIS DRAWING IS THE SOLE
PROPERTY OF L-COM, INC. ANY REPRODUCTION IN PART OR WHOLE
WITHOUT THE WRITTEN PERMISSION OF L-COM, INC. IS PROHIBITED.

REVISION					
ZONE	REV.	DESCRIPTION	DATE	CHANGED BY	APPROVED BY
	A	INITIAL RELEASE	03/21/2023	BPUCHASKI	AGANWANI



NOTES:

MATERIAL & FINISH

1. BODY: BRASS, GOLD PLATED
2. CENTER CONTACT: PHOSPHOR BRONZE, GOLD PLATED
3. INSULATOR: PTFE

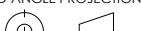
ELECTRICAL

1. IMPEDANCE: 50 OHM
2. FREQUENCY: 0-6GHz
3. VSWR: 1.45 MAX.
4. INSERTION LOSS: 0.4 MAX.

COMPONENT SHALL BE INDIVIDUALLY PACKAGED IN
ACCORDANCE WITH L-COM SPECIFICATION PS-0031.

REGULATORY COMPLIANCE:

EU RoHS DIRECTIVE (MOST RECENT RELATED VERSION)

UNLESS OTHERWISE SPECIFIED, DIMENSIONS ARE IN INCHES [mm]		APPROVALS		DATE		<div>L-com™</div> <div>an INFINITI® brand</div>		50 High Street, West Mill, North Andover, MA 01845 USA. Phone: 1.800.341.5266 1.978.682.6936		
OVERALL CABLE LENGTH TOLERANCE: ≤12 [305] = +1 [25] / -0 >12 [305] ≤60 [1524] = +2 [51] / -0 >60 [1524] ≤120 [3048] = +4 [102] / -0 >120 [3048] ≤300 [7620] = +6 [152] / -0 >300 [7620] = +5% / -0		DRAWN BY BPUCHASKI		03/21/2023		CATEGORY		RF INTERCONNECTS		
		CHECKED BY DFRISIELLO		03/21/2023						
		APPROVED BY AGANWANI		03/21/2023						
ALL OTHER DIMENSIONAL TOLERANCES: .X = ± .2 [5] FRACTIONS ± 1/32 .XX = ± .02 [.5] ANGLES ± 1° .XXX = ± .005 [.13]		CONFIGURATION DETAILS OF UNDIMENSIONED FEATURES MAY VARY		PRODUCT DESCRIPTION RF PCB Connector, SMB Female straight (End launch)						
THIRD-ANGLE PROJECTION 		COLOR VARIATIONS MAY OCCUR		SIZE A	CAGE CODE 43321	ITEM NO. RFPB-MCX-F-S-6G-30		REV. A		
				SCALE: NONE		CAD FILE: RFPB-MCX-F-S-6G-30.SLDDRW			SHEET 1 OF 1	