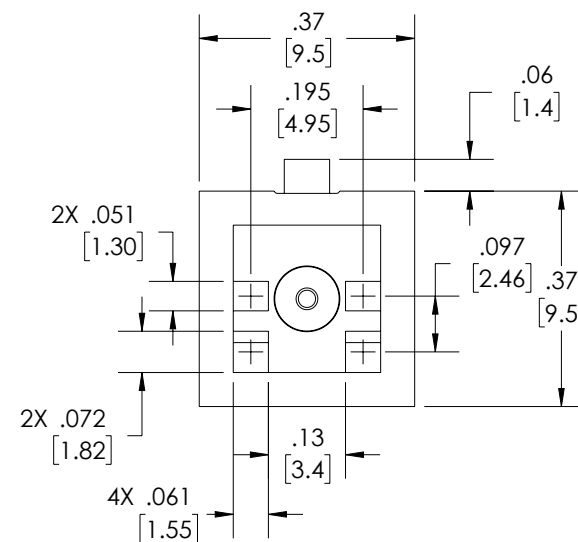
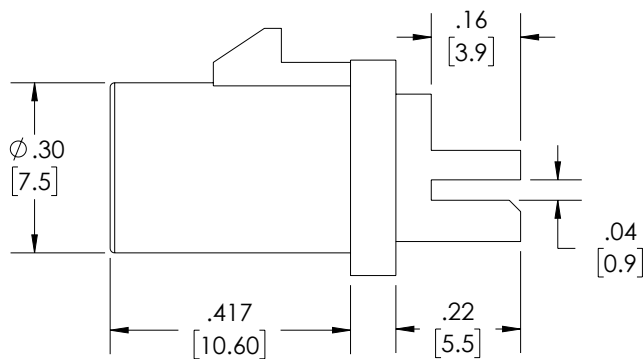
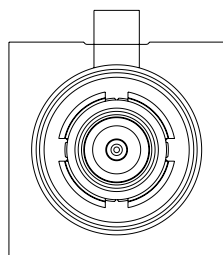
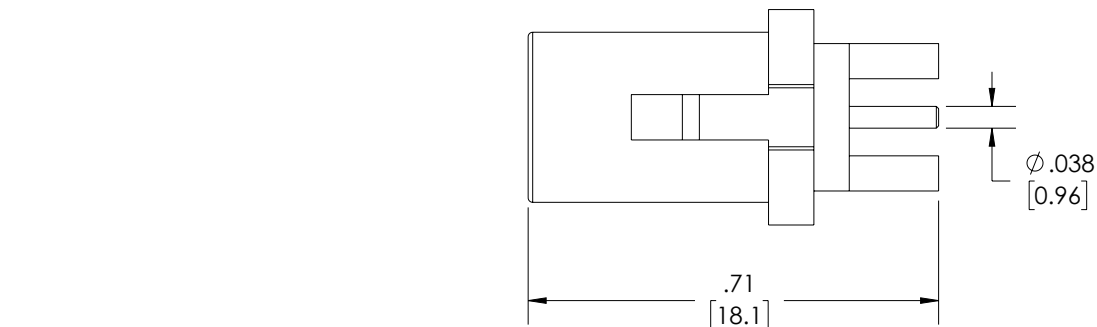


THE INFORMATION CONTAINED IN THIS DRAWING IS THE SOLE
PROPERTY OF L-COM, INC. ANY REPRODUCTION IN PART OR WHOLE
WITHOUT THE WRITTEN PERMISSION OF L-COM, INC. IS PROHIBITED.

| REVISION | | | | | |
|----------|------|-----------------|------------|------------|-------------|
| ZONE | REV. | DESCRIPTION | DATE | CHANGED BY | APPROVED BY |
| | A | INITIAL RELEASE | 03/21/2023 | BPUCHASKI | AGANWANI |



NOTES:

1. OUTSIDE CASE: NYLON 66, WATER BLUE

MATERIAL & FINISH

1. BODY: BRASS, NICKEL

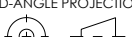
2. CENTER CONTACT: BRASS, GOLD PLATED

3. INSULATOR: PTFE

COMPONENT SHALL BE INDIVIDUALLY PACKAGED IN
ACCORDANCE WITH L-COM SPECIFICATION PS-0031.

REGULATORY COMPLIANCE:

EU RoHS DIRECTIVE (MOST RECENT RELATED VERSION)

| | | | | | | | |
|---|--|-------------------------------|--|---|--------------------------------------|---|-----------|
| UNLESS OTHERWISE SPECIFIED, DIMENSIONS ARE IN INCHES [mm] | | APPROVALS | | DATE | | <div>L-com™ an INFINITI® brand</div> <div>50 High Street, West Mill, North Andover, MA 01845 USA Phone: 1.800.341.5266 1.978.682.6936</div> | |
| OVERALL CABLE LENGTH TOLERANCE: ≤12 [305] = +1 [25] / -0 >12 [305] ≤60 [1524] = +2 [51] / -0 >60 [1524] ≤120 [3048] = +4 [102] / -0 >120 [3048] ≤300 [7620] = +6 [152] / -0 >300 [7620] = +5% / -0 | | DRAWN BY BPUCHASKI | | 03/21/2023 | | | |
| ALL OTHER DIMENSIONAL TOLERANCES: .X = ± .2 [5] FRACTIONS ± 1/32 .XX = ± .02 [.5] ANGLES ± 1° .XXX = ± .005 [.13] | | CHECKED BY DFRISIELLO | | 03/21/2023 | | CATEGORY | |
| | | APPROVED BY AGANWANI | | 03/21/2023 | | RF INTERCONNECTS | |
| CONFIGURATION DETAILS OF UNDIMENSIONED FEATURES MAY VARY | | PRODUCT DESCRIPTION | | RF PCB Connector, FAKRA Male straight (End launch) | | | |
| THIRD-ANGLE PROJECTION  | | COLOR VARIATIONS MAY OCCUR | | SIZE A | CAGE CODE 43321 | ITEM NO. RFPCB-FAKRA-MS4G-34 | REV. A |
| | | | | SCALE: NONE | CAD FILE: RFPCB-FAKRA-MS4G-34.SLDDRW | SHEET 1 OF 1 | |