

6

5

4

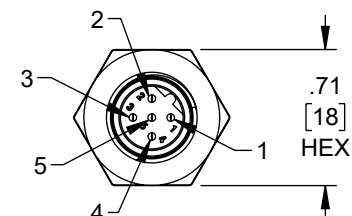
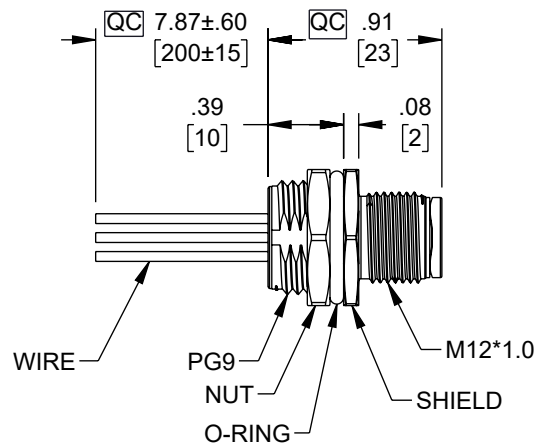
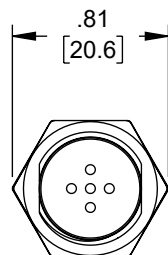
3

2

1

REVISION

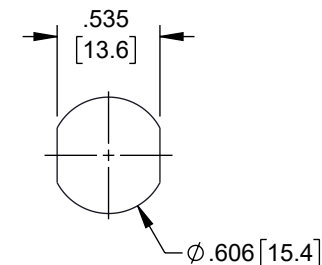
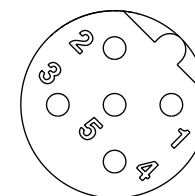
ZONE	REV	DESCRIPTION	DATE	CHANGED BY	APPROVED
	A	INITIAL RELEASE	10/17/2024	DMAY	DGUTTADAURO

**C1**

NOTES:

1. **QC** IMPORTANT DIMENSION.
2. WATERPROOF RATE: IP68, MATED 1m/24h
IP69K, MATED
3. C1:
 1. HOUSING: THERMOPLASTIC, BLACK
 2. PIN: COPPER ALLOY, GOLD PLATED
 3. NUT: METAL
 4. O-RING: RUBBER, BLACK
 5. SHIELD: METAL
4. WIRE: UL1061 22AWG, PVC
5. FOR PANEL THICKNESS MAX: 4.5mm
6. O-RING AND NUT ARE ASSEMBLED ON CONNECTORS
7. TEMPERATURE RANGE: -20°C TO +85°C
8. OPERATING VOLTAGE: 60V
9. NOMINAL CURRENT: 4A

PIN OUT	
C1	WIRE COLOR
1	BROWN
2	WHITE
3	BLUE
4	BLACK
5	GRAY

**C1**
RECOMMENDED
PANEL CUT-OUT**C1**
PIN ASSIGNMENTS
FRONT VIEW

REGULATORY COMPLIANCE:
EU RoHS DIRECTIVE (MOST RECENT RELEASED VERSION).

THE INFORMATION CONTAINED IN THIS DRAWING IS THE SOLE PROPERTY OF INFINITE ELECTRONICS, INC. ANY REPRODUCTION IN PART OR WHOLE WITHOUT THE WRITTEN PERMISSION OF INFINITE ELECTRONICS, INC. IS PROHIBITED. THESE COMMODITIES, TECHNOLOGY OR SOFTWARE WERE EXPORTED FROM THE UNITED STATES IN ACCORDANCE WITH THE EXPORT ADMINISTRATION REGULATIONS. DIVERSION CONTRARY TO U.S. LAW PROHIBITED.

6

5

4

3

2

1

UNLESS OTHERWISE SPECIFIED
LEADING DIMENSIONS ARE INCHES
DIMENSIONS IN [] ARE MILLIMETERS

TOLERANCES:
X = ±.2 [5] FRACTIONS
XX = ±.02 [0.5] ± 1/32
XXX = ±.005 [0.13] ANGLES ± 1°

CABLE LENGTH TOLERANCES:
≤12 [305] = +1 [25] / -0
>12 [305] ≤ 60 [1524] = +2 [51] / -0
>60 [1524] ≤ 120 [3048] = +4 [102] / -0
>120 [3048] ≤ 300 [7620] = +6 [152] / -0
>300 [7620] = +5% / -0

ALL DIMENSIONS ARE FOR REFERENCE ONLY
AND SUBJECT TO CHANGE WITHOUT NOTICE.
UN-DIMENSIONED/NON-CRITICAL FEATURES
MAY VARY IN SIZE AND LOCATION
COLORS MAY VARY

L-com
an INFINIT® brand

Website: www.L-com.com
Phone: 1.800.341.5266 | 1.978.682.6936



INTERPRET ALL DIMENSIONS AND
TOLERANCES PER ASME Y14.5

SCALE SHEET
NONE 1 OF 1

DESCRIPTION
M12 SENSOR 5 PIN B CODE MALE RECEPTACLE, IP68 IP69K
RATED, 60V, 4A, PG9 REAR PANEL MOUNT STYLE WITH 22AWG
UL1061 PVC 0.2M LEADS

SIZE	CAGE CODE	DRAWN BY	ITEM NO.	REV
A	43321	DMAY	REC-M125BM-PG9R-L	A