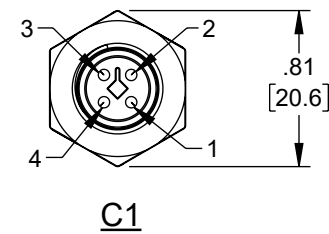
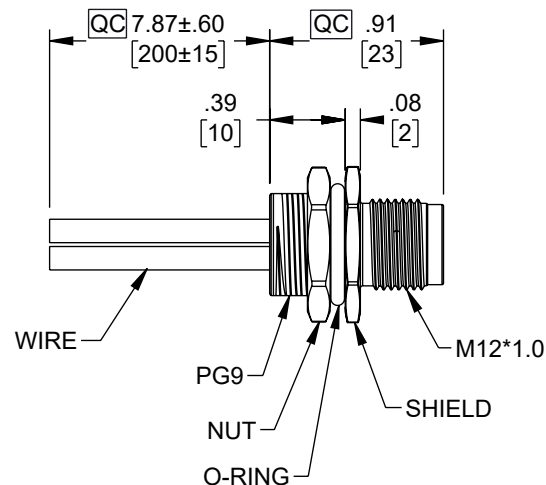
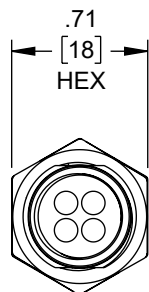


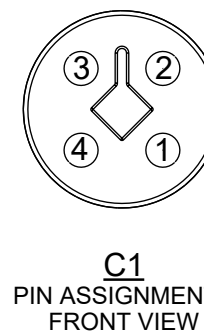
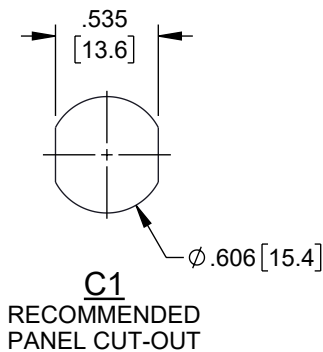
REVISION					
ZONE	REV	DESCRIPTION	DATE	CHANGED BY	APPROVED
	A	INITIAL RELEASE	11/5/2024	DMAY	DGUTTADAURO



NOTES:

1. **QC** IMPORTANT DIMENSION.
2. WATERPROOF RATE: IP68, MATED 1m/24h
IP69K, MATED
3. C1:
 1. HOUSING: THERMOPLASTIC, BLACK
 2. PIN: COPPER ALLOY, GOLD PLATED
 3. NUT: METAL
 4. O-RING: RUBBER, BLACK
 5. SHIELD: METAL
4. WIRE: UL1015, 162AWG, PVC
5. FOR PANEL THICKNESS MAX: 4.5mm
6. O-RING AND NUT ARE ASSEMBLED ON CONNECTORS
7. TEMPERATURE RANGE: -20 °C TO +85 °C
8. OPERATING VOLTAGE: 63V
9. NOMINAL CURRENT: 12A

PIN OUT	
C1	WIRE COLOR
1	BROWN
2	WHITE
3	BLUE
4	BLACK



REGULATORY COMPLIANCE:
EU RoHS DIRECTIVE (MOST RECENT RELEASED VERSION).

THE INFORMATION CONTAINED IN THIS DRAWING IS THE SOLE PROPERTY OF INFINITE ELECTRONICS, INC. ANY REPRODUCTION IN PART OR WHOLE WITHOUT THE WRITTEN PERMISSION OF INFINITE ELECTRONICS, INC. IS PROHIBITED. THESE COMMODITIES, TECHNOLOGY OR SOFTWARE WERE EXPORTED FROM THE UNITED STATES IN ACCORDANCE WITH THE EXPORT ADMINISTRATION REGULATIONS. DIVERSION CONTRARY TO U.S. LAW PROHIBITED.

UNLESS OTHERWISE SPECIFIED
LEADING DIMENSIONS ARE INCHES
DIMENSIONS IN [] ARE MILLIMETERS

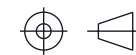
TOLERANCES:
X = ±.2 [5] FRACTIONS
XX = ±.02 [0.5] ± 1/32
XXX = ±.005 [0.13] ANGLES ± 1°

CABLE LENGTH TOLERANCES:
≤12 [305] = +1 [25] / -0
>12 [305] ≤ 60 [1524] = +2 [51] / -0
>60 [1524] ≤ 120 [3048] = +4 [102] / -0
>120 [3048] ≤ 300 [7620] = +6 [152] / -0
>300 [7620] = +5% / -0

ALL DIMENSIONS ARE FOR REFERENCE ONLY
AND SUBJECT TO CHANGE WITHOUT NOTICE.
UN-DIMENSIONED/NON-CRITICAL FEATURES
MAY VARY IN SIZE AND LOCATION
COLORS MAY VARY

L-com
an INFINIT® brand

Website: www.L-com.com
Phone: 1.800.341.5266 | 1.978.682.6936



INTERPRET ALL DIMENSIONS AND
TOLERANCES PER ASME Y14.5

SCALE	SHEET
NONE	1 OF 1

DESCRIPTION
M12 DC POWER 4 PIN T CODE MALE RECEPTACLE, IP68 IP69K
RATED, 63V, 12A, PG9 REAR PANEL MOUNT STYLE WITH
16AWG UL1015 PVC 0.2M LEADS

SIZE	CAGE CODE	DRAWN BY	ITEM NO.	REV
A	43321	DMAY	REC-M124TM-PG9R-L	A