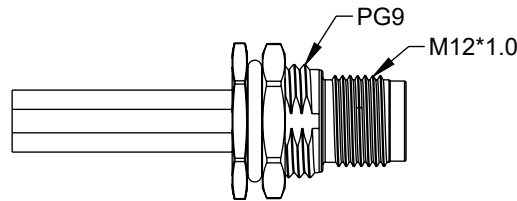
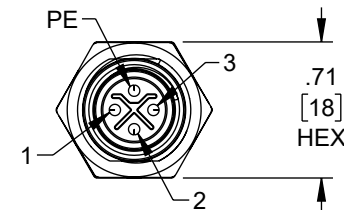
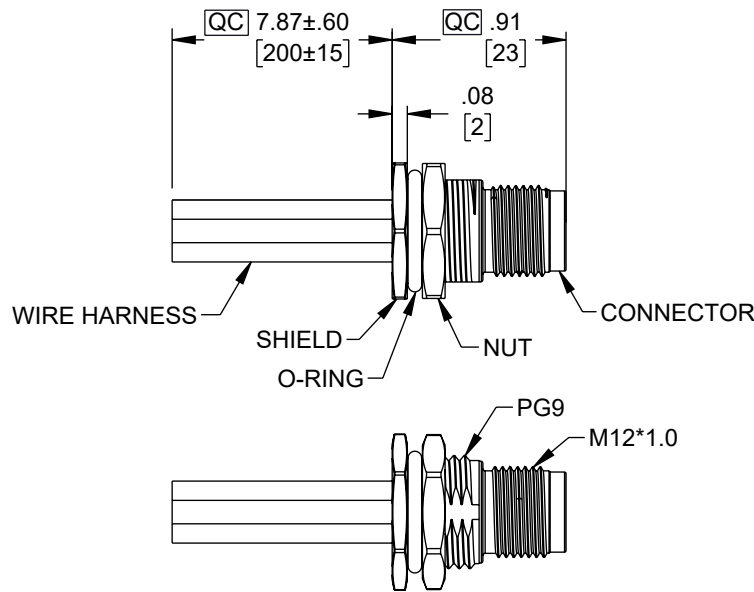
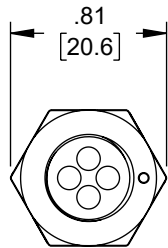


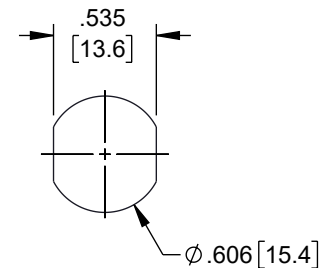
REVISION					
ZONE	REV	DESCRIPTION	DATE	CHANGED BY	APPROVED
	A	INITIAL RELEASE	11/07/2024	DMAY	DGUTTADAURO



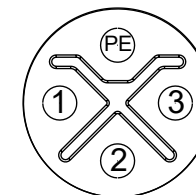
NOTES:

1. **QC** IMPORTANT DIMENSION.
2. WATERPROOF RATE: IP68, UNMATED 1m/24h
IP69K, MATED
3. CONNECTOR:
 1. HOUSING: THERMOPLASTIC, BLACK
 2. PIN: COPPER ALLOY, GOLD PLATED
4. SHIELD: METAL
5. NUT: METAL
6. O-RING: RUBBER, BLACK
7. WIRE HARNESS: UL1015, 16AWG
8. FOR PANEL THICKNESS MAX: 4.5mm
9. O-RING AND NUT ARE ASSEMBLED ON CONNECTORS
10. TEMPERATURE RANGE: -20°C TO +85°C
11. OPERATING VOLTAGE: 630V
12. NOMINAL CURRENT: 12A

PIN OUT	
PIN#	WIRE
1	BROWN
2	WHITE
3	BLUE
PE	BLACK



RECOMMENDED PANEL CUT-OUT



3+PE PIN ASSIGNMENTS FRONT VIEW

REGULATORY COMPLIANCE:
EU RoHS DIRECTIVE (MOST RECENT RELEASED VERSION).

THE INFORMATION CONTAINED IN THIS DRAWING IS THE SOLE PROPERTY OF INFINITE ELECTRONICS, INC. ANY REPRODUCTION IN PART OR WHOLE WITHOUT THE WRITTEN PERMISSION OF INFINITE ELECTRONICS, INC. IS PROHIBITED. THESE COMMODITIES, TECHNOLOGY OR SOFTWARE WERE EXPORTED FROM THE UNITED STATES IN ACCORDANCE WITH THE EXPORT ADMINISTRATION REGULATIONS. DIVERSION CONTRARY TO U.S. LAW PROHIBITED.

UNLESS OTHERWISE SPECIFIED LEADING DIMENSIONS ARE INCHES DIMENSIONS IN [] ARE MILLIMETERS

TOLERANCES:
 .X = ±.2 [5] FRACTIONS
 .XX = ±.02 [0.5] ± 1/32
 .XXX = ±.005 [0.13] ANGLES ± 1°

CABLE LENGTH TOLERANCES:
 ≤12 [305] = +1 [25] / -0
 >12 [305] ≤ 60 [1524] = +2 [51] / -0
 >60 [1524] ≤ 120 [3048] = +4 [102] / -0
 >120 [3048] ≤ 300 [7620] = +6 [152] / -0
 >300 [7620] = +5% / -0

ALL DIMENSIONS ARE FOR REFERENCE ONLY AND SUBJECT TO CHANGE WITHOUT NOTICE. UN-DIMENSIONED/NON-CRITICAL FEATURES MAY VARY IN SIZE AND LOCATION. COLORS MAY VARY



Website: www.L-com.com
 Phone: 1.800.341.5266 | 1.978.682.6936

INTERPRET ALL DIMENSIONS AND TOLERANCES PER ASME Y14.5	
SCALE	SHEET
NONE	1 OF 1

DESCRIPTION
M12 AC POWER 4 PIN S CODE MALE RECEPTACLE, IP68 IP69K RATED, 630V, 12A, PG9 FRONT PANEL MOUNT STYLE WITH 16AWG UL1015 PVC 0.2M LEADS

SIZE	CAGE CODE	DRAWN BY	ITEM NO.	REV
A	43321	DMAY	REC-M124SM-PG9F-L	A