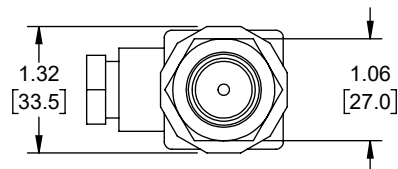
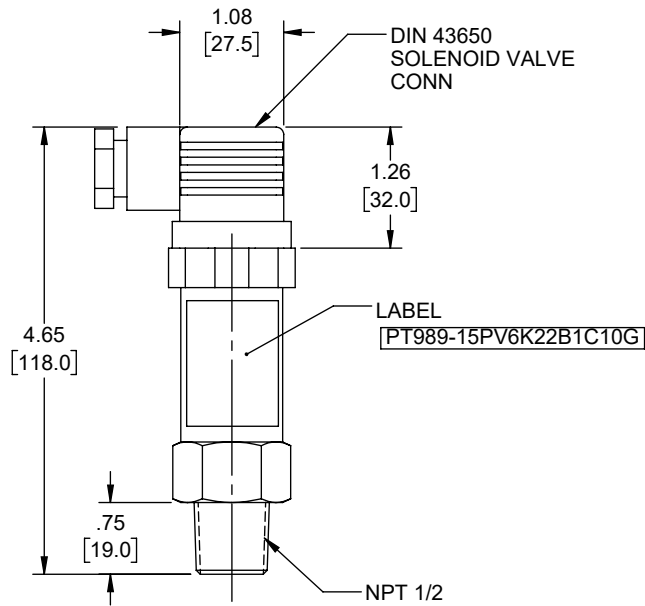
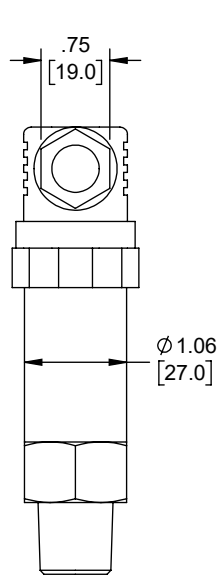
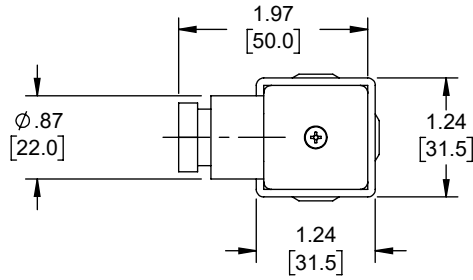


REVISIONS

| REV. | DESCRIPTION     | DATE     | APPROVED |
|------|-----------------|----------|----------|
| A    | INITIAL RELEASE | 05/29/19 | TOZA     |

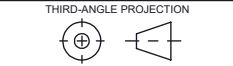


UNLESS OTHERWISE SPECIFIED  
LEADING DIMENSIONS ARE INCHES  
DIMENSIONS IN [ ] ARE MILLIMETERS

TOLERANCES:

|                 |             |
|-----------------|-------------|
| .X±.2 [5.08]    | FRACTIONS   |
| .XX±.01 [.25]   | ± 1/32      |
| .XXX±.005 [.13] | ANGLES ± 1° |

ALL DIMENSIONS SHOWN  
ARE FOR REFERENCE ONLY.



an INFINITI brand  
50 High Street, West Mill, 3rd Floor, Suite #30  
North Andover, MA 01845 USA.  
Phone: 1.800.341.5266 | 1.978.682.6936  
Fax: 1.978.689.9484

www.L-com.com | e-mail: CustomerService@L-com.com

THE INFORMATION AND  
DESIGN IN THIS DOCUMENT  
IS THE PROPERTY OF  
L-COM GLOBAL CONNECTIVITY.  
ALL RIGHTS RESERVED.

SHEET 1 OF 1

SCALE N/A

|      |       |          |                      |     |
|------|-------|----------|----------------------|-----|
| SIZE | CAGE  | DRAWN BY | PART NUMBER          | REV |
| A    | 43321 | DZINN    | PT989-15PV6K22B1C10G | A   |

THESE COMMODITIES, TECHNOLOGY OR SOFTWARE WERE EXPORTED FROM THE UNITED STATES IN ACCORDANCE WITH THE EXPORT ADMINISTRATION REGULATIONS. DIVERSION CONTRARY TO U.S. LAW PROHIBITED.