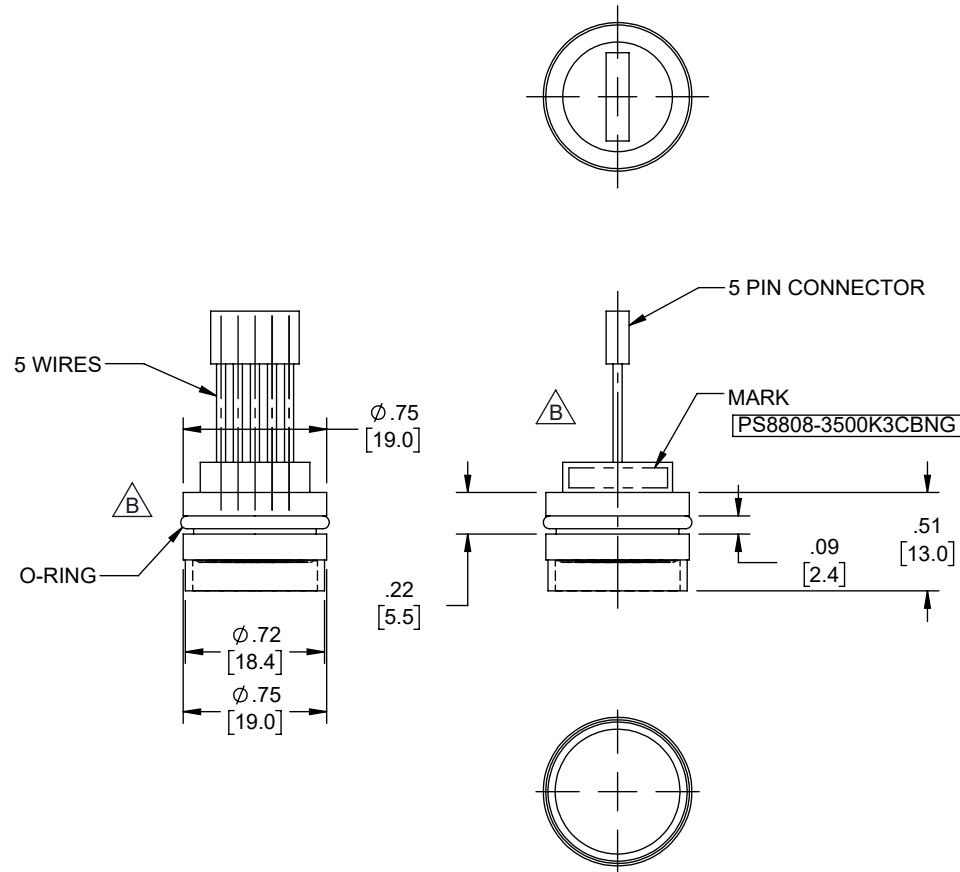


| REVISIONS | | | |
|-----------|---------------------------------------|----------|----------|
| REV. | DESCRIPTION | DATE | APPROVED |
| B | ECN 10065; DELETED DIM [4.0] & [14.5] | 08/28/19 | TOZA |



| | |
|--|------------------|
| UNLESS OTHERWISE SPECIFIED LEADING DIMENSIONS ARE INCHES DIMENSIONS IN [] ARE MILLIMETERS | |
| TOLERANCES: | |
| X±.2 [5.08] | FRACTIONS ± 1/32 |
| .XX±.01 [.25] | ANGLES ± 1° |
| .XXX±.005 [.13] | |
| ALL DIMENSIONS SHOWN ARE FOR REFERENCE ONLY. | |
| THIRD-ANGLE PROJECTION | |
| | |

| | | | |
|--|-------|----------|-------------------|
| an INFINITI brand 50 High Street, West Mill, 3rd Floor, Suite #30 North Andover, MA 01845 USA. Phone: 1.800.341.5266 1.978.682.6936 Fax: 1.978.689.9484 www.L-com.com e-mail: CustomerService@L-com.com | | | |
| SIZE | CAGE | DRAWN BY | PART NUMBER |
| A | 43321 | DZINN | PS8808-3500K3CBNG |

| | |
|--|-----|
| THE INFORMATION AND DESIGN IN THIS DOCUMENT IS THE PROPERTY OF L-COM GLOBAL CONNECTIVITY. ALL RIGHTS RESERVED. | |
| SHEET | OF |
| 1 | 1 |
| SCALE | N/A |
| REV | B |

THESE COMMODITIES, TECHNOLOGY OR SOFTWARE WERE EXPORTED FROM THE UNITED STATES IN ACCORDANCE WITH THE EXPORT ADMINISTRATION REGULATIONS. DIVERSION CONTRARY TO U.S. LAW PROHIBITED.