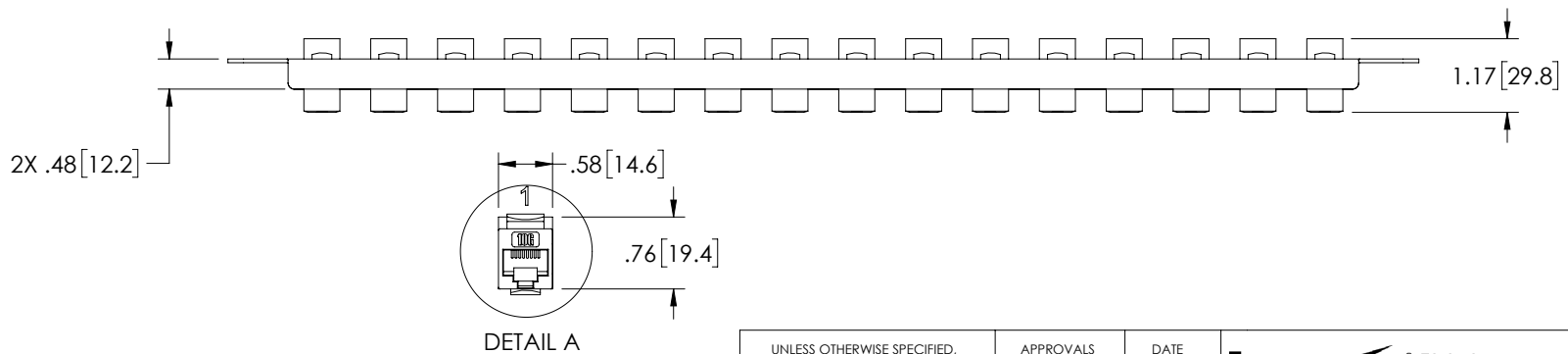
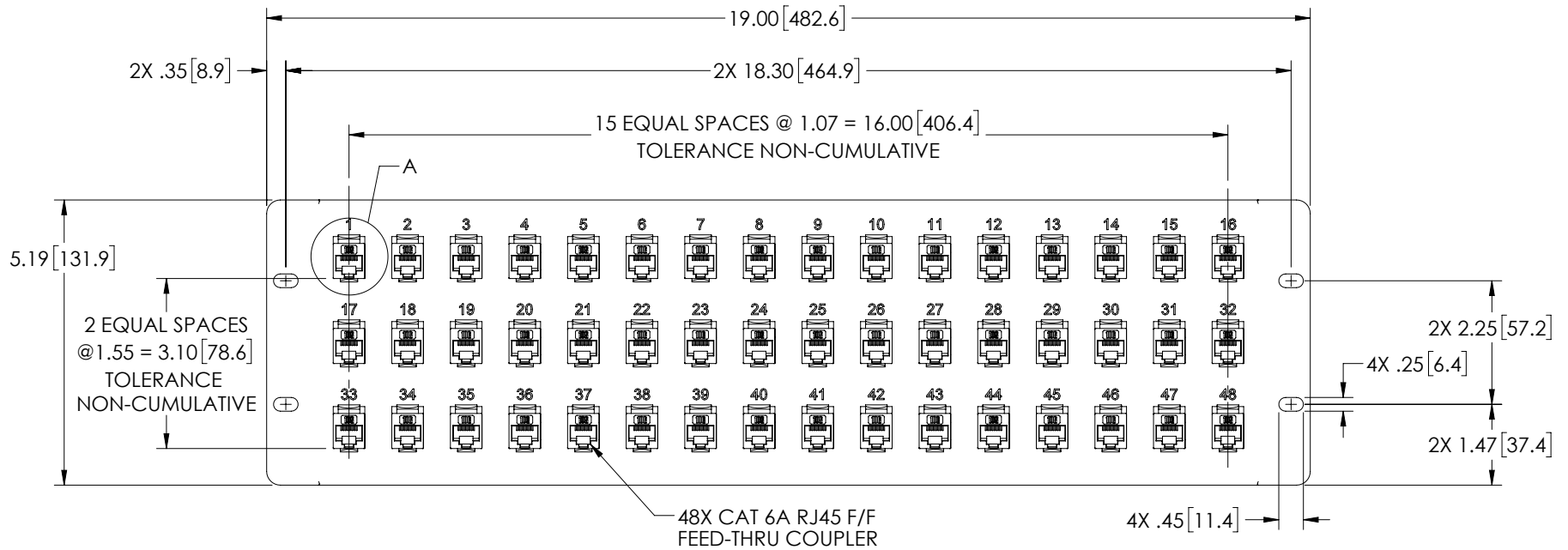


THE INFORMATION CONTAINED IN THIS DRAWING IS THE SOLE PROPERTY OF L-COM, INC. ANY REPRODUCTION IN PART OR WHOLE WITHOUT THE WRITTEN PERMISSION OF L-COM, INC. IS PROHIBITED.

REVISIONS			
REV	DESCRIPTION	DATE	APPROVED
A	REV A DRAWING RELEASED	04/16/2019	MMARTINEZ



NOTES:

1. DIMENSIONS FOR REFERENCE ONLY.
2. MATERIAL: .06 THICK COLD ROLLED STEEL.
3. PANEL FINISH: FLAT BLACK POWDER COAT.
4. SILKSCREEN COLOR: WHITE.
5. PANEL COMPONENT SHALL BE PACKAGED IN ACCORDANCE WITH L-COM SPECIFICATION PS-0014.

UNLESS OTHERWISE SPECIFIED, DIMENSIONS ARE IN INCHES [mm] OVERALL CABLE LENGTH TOLERANCE: ≤12 [305] = +1 [25] / -0 >12 [305] ≤60 [1524] = +2 [51] / -0 >60 [1524] ≤120 [3048] = +4 [102] / -0 >120 [3048] ≤300 [7620] = +6 [152] / -0 >300 [7620] = +5% / -0% ALL OTHER DIMENSIONAL TOLERANCES: .X = ±.2 [5.08] .XX = ±.02 [5.1] .XXX = ±.005 [1.3] PROJECTION 	APPROVALS	DATE	 50 HIGH STREET NORTH ANDOVER, MA 01845	
	DRAWN BY DZINN	04/08/2019		
	CHECKED BY DFRISIELLO	04/08/2019	CATEGORY RACK PANELS	
	APPROVED BY MMARTINEZ	04/08/2019	PRODUCT DESCRIPTION PNL3,U RACK w/48 C6A CPLR	
CONFIGURATION DETAILS OF UNDIMENSIONED FEATURES MAY VARY		SIZE A	FSCM NO. 43321	DWG. NO. PR525-C6A-48
COLOR VARIATIONS MAY OCCUR		SCALE: NONE	CAD FILE: PR525-C6A-48.SLDDRW	REV. A
		SHEET 1 OF 1		