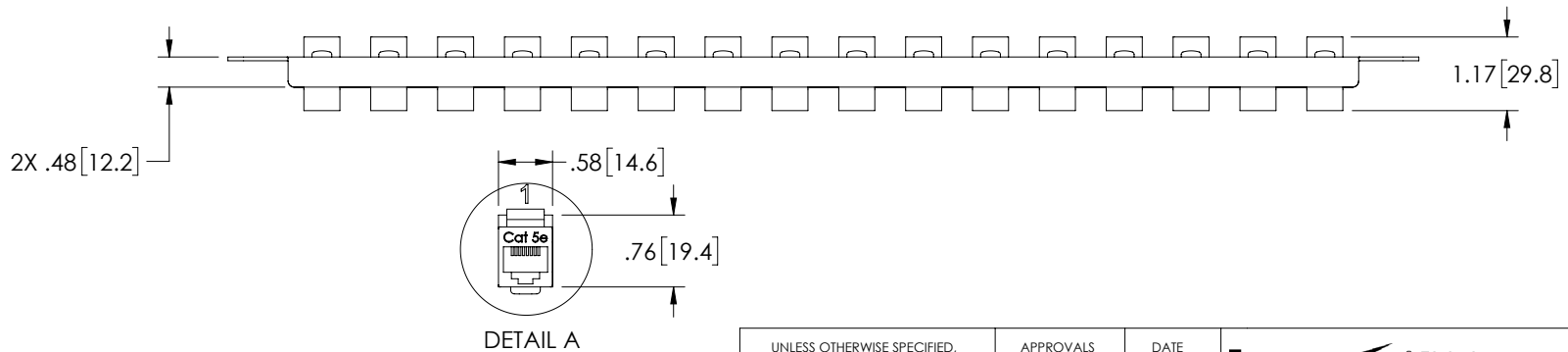
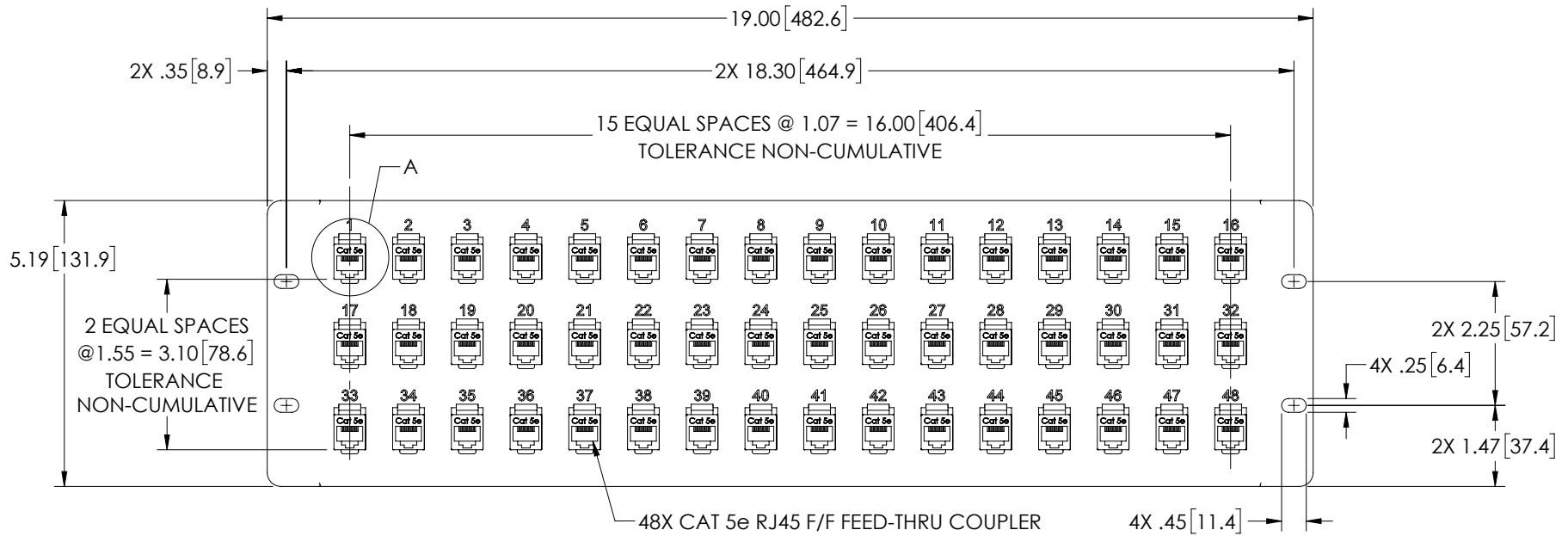


THE INFORMATION CONTAINED IN THIS DRAWING IS THE SOLE PROPERTY OF L-COM, INC. ANY REPRODUCTION IN PART OR WHOLE WITHOUT THE WRITTEN PERMISSION OF L-COM, INC. IS PROHIBITED.

| REVISIONS | | | |
|-----------|------------------------|------------|-----------|
| REV | DESCRIPTION | DATE | APPROVED |
| A | REV A DRAWING RELEASED | 04/15/2019 | MMARTINEZ |
| | | | |
| | | | |



NOTES:

1. DIMENSIONS FOR REFERENCE ONLY.
2. MATERIAL: .06 THICK COLD ROLLED STEEL.
3. PANEL FINISH: FLAT BLACK POWDER COAT.
4. SILKSCREEN COLOR: WHITE.
5. PANEL COMPONENT SHALL BE PACKAGED IN ACCORDANCE WITH L-COM SPECIFICATION PS-0014.

| | | | | |
|---|--------------------------|-------------------------------|--|--------------------------|
| UNLESS OTHERWISE SPECIFIED, DIMENSIONS ARE IN INCHES [mm] OVERALL CABLE LENGTH TOLERANCE: ≤12 [305] = +1 [25] / -0 >12 [305] ≤60 [1524] = +2 [51] / -0 >60 [1524] ≤120 [3048] = +4 [102] / -0 >120 [3048] ≤300 [7620] = +6 [152] / -0 >300 [7620] = +5% / -0% ALL OTHER DIMENSIONAL TOLERANCES: .X = ±.2 [5.08] .XX = ±.02 [51] .XXX = ±.005 [127] PROJECTION | APPROVALS | DATE | 50 HIGH STREET NORTH ANDOVER, MA 01845 | |
| | DRAWN BY DZINN | 04/08/2019 | | |
| | CHECKED BY DFRISIELLO | 04/08/2019 | CATEGORY RACK PANELS | |
| | APPROVED BY MMARTINEZ | 04/08/2019 | PRODUCT DESCRIPTION PNL3U RACK w/48 C5E CPLR | |
| CONFIGURATION DETAILS OF UNDIMENSIONED FEATURES MAY VARY | | COLOR VARIATIONS MAY OCCUR | SIZE A | FSCM NO. 43321 |
| | | | DWG. NO. PR525-C5E-48 | REV. A |
| | | SCALE: NONE | CAD FILE: PR525-C5E-48.SLDDRW | SHEET 1 OF 1 |