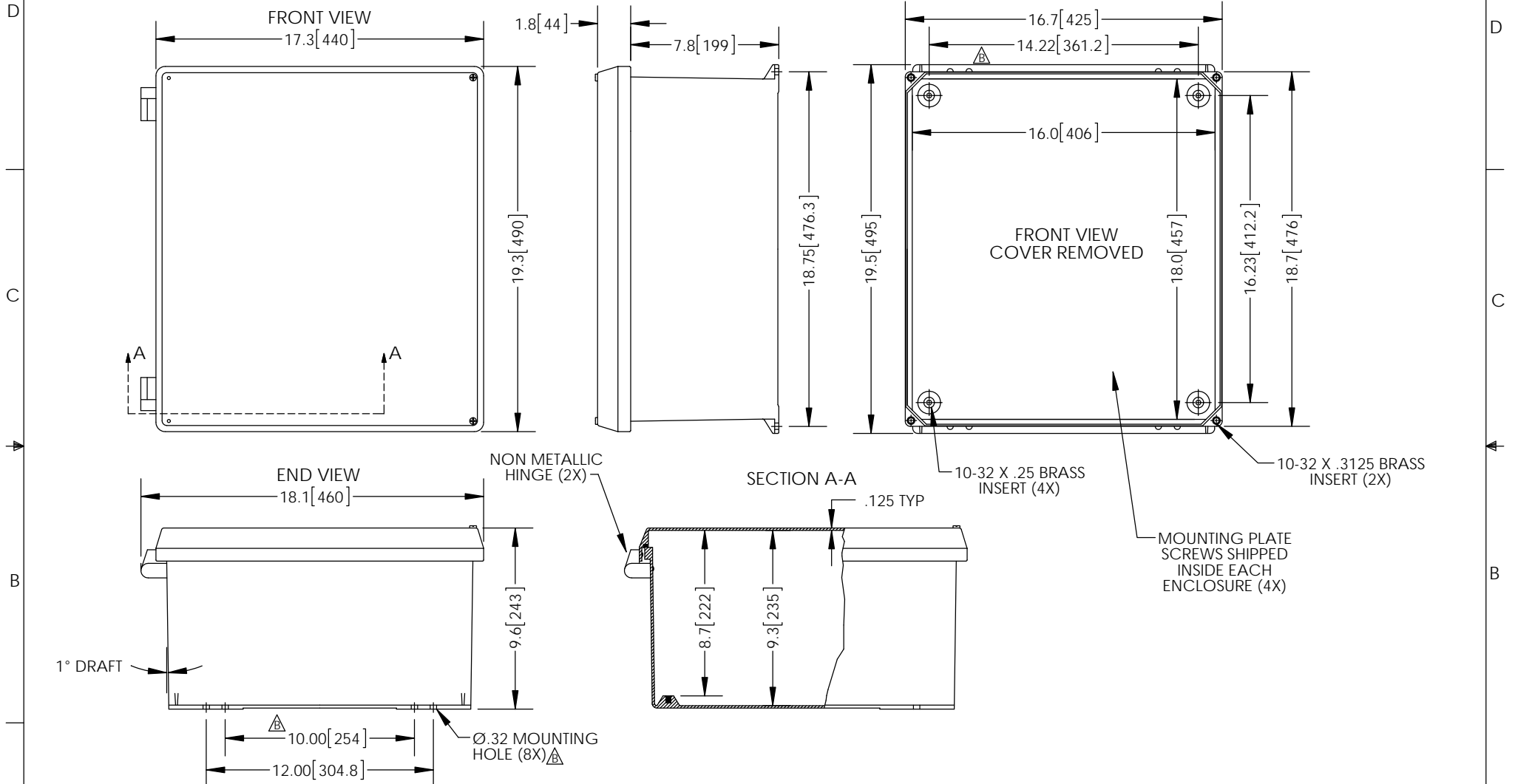


THE INFORMATION CONTAINED IN THIS DRAWING IS THE SOLE PROPERTY OF L-COM, INC. ANY REPRODUCTION IN PART OR WHOLE WITHOUT THE WRITTEN PERMISSION OF L-COM, INC. IS PROHIBITED.

| REVISIONS |                                  |          |            |
|-----------|----------------------------------|----------|------------|
| REV       | DESCRIPTION                      | DATE     | APPROVED   |
| A         | INITIAL RELEASE                  | 01/03/13 | D.GRIFFIN  |
| B         | ECN 7764 UPDATE PER VENDOR SPECS | 01/27/15 | B.PUCHASKI |
|           |                                  |          |            |



- NOTE:**
- ENCLOSURE MATERIAL-GRAY (RAL7035)  
HOT MOLDED FIBERGLASS REINFORCED POLYESTER
  - NEMA RATED TYPE 3, 3R, 3S, 4, 4X, 12 AND 13 PRIOR TO MODIFICATIONS.
  - IEC 529 RATED IP 66 PRIOR TO MODIFICATION.
  - TEMPERATURE RANGE FROM -50 DEG C TO 150 DEG C.
  - SELF EXTINGUISHING AND HALOGEN FREE
  - ENCLOSURES ARE MAINTENANCE FREE AND CORROSION RESISTANT.
  - SHALL BE PACKAGED AS PER L-COM SPEC PKG-00070
  - ALL DIMENSIONS FOR REFERENCE ONLY

**REGULATORY COMPLIANCE:**  
CE2011/65/EU(RoHS DIRECTIVE)

|   |  |                               |   |  |                              |
|---|--|-------------------------------|---|--|------------------------------|
| UNLESS OTHERWISE SPECIFIED,<br>DIMENSIONS ARE IN INCHES [mm]<br><br>DIMENSIONAL TOLERANCES:<br>.X = ±.1 [2.54]<br>.XX = ±.01 [.25]<br>.XXX = ±.005 [.13]<br><br>ANGULAR TOLERANCES:<br>ALL = ± 1°<br><br>PROJECTION<br> | APPROVALS<br>B.PUCHASKI  | DATE<br>01/03/13              |   | 45 BEECHWOOD DRIVE<br>NORTH ANDOVER, MA<br>01845 |                              |
|   | CHECKED BY<br>P.PESA   | 01/03/13                      |   | CATEGORY<br>ENCLOSURE                            |                              |
|   | APPROVED BY<br>P.PESA  | 01/03/13                      | PRODUCT DESCRIPTION<br>FPR NEMA ENCLOSURE 18 X 16 X 8<br>NM HINGE W/SCREW COVER |  |                              |
|   | CONFIGURATION DETAILS OF<br>UNDIMENSIONED FEATURES<br>MAY VARY | COLOR VARIATIONS<br>MAY OCCUR | SIZE<br><b>A</b>  | FSCM NO.<br><b>43321</b>                         | DWG. NO.<br><b>NBN181608</b> |
| SCALE: NONE   |  | CAD FILE: NBN181608.SLDDRW    |   | SHEET 1 OF 1                                     |                              |