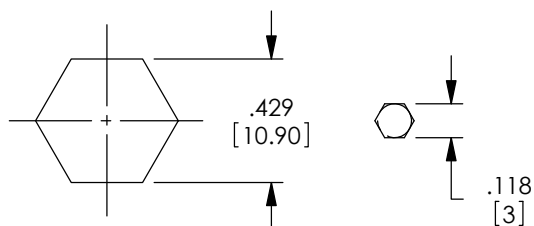
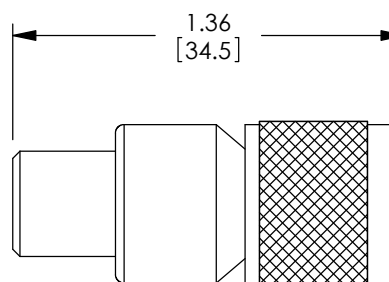
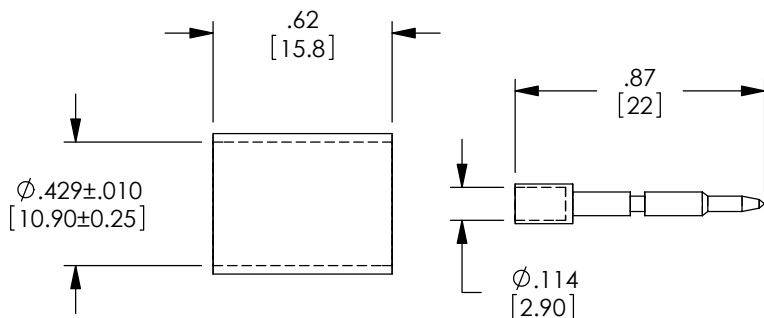
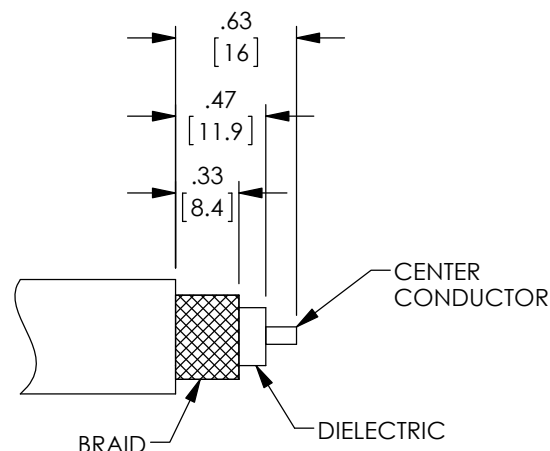


THE INFORMATION CONTAINED IN THIS DRAWING IS THE SOLE PROPERTY OF L-COM, INC. ANY REPRODUCTION IN PART OR WHOLE WITHOUT THE WRITTEN PERMISSION OF L-COM, INC. IS PROHIBITED.

REVISIONS			
REV	DESCRIPTION	DATE	APPROVED
A	DRAWING REPLACES HPC993-OD1	10/7/14	D.FRISIELLO



RECOMMENDED FERRULE & PIN CRIMP SIZE



CABLE STRIPPING DIMENSIONS

NOTES:

MATERIALS:

- BODY: BRASS
- FERRULE: COPPER
- PIN: PHOSPHOR BRONZE
- INSULATOR: PTFE

FINISH:

- BODY: NICKEL PLATE
- FERRULE: NICKEL PLATE
- PIN: GOLD PLATE

ALL DIMENSIONS ARE FOR REFERENCE ONLY.

APPLICATION: BELDEN 9913 CABLE ASSEMBLIES.
IMPEDANCE: 50 OHM

CONNECTOR SHALL BE INDIVIDUALLY PACKAGED IN ACCORDANCE WITH L-COM SPECIFICATION PS-0031.

REGULATORY COMPLIANCE:

CE2011/65/EU (RoHS DIRECTIVE)

UNLESS OTHERWISE SPECIFIED, DIMENSIONS ARE IN INCHES [mm] OVERALL CABLE LENGTH TOLERANCE: ≤12 [305] = +1 [25] / -0 >12 [305] ≤60 [1524] = +2 [51] / -0 >60 [1524] ≤120 [3048] = +4 [102] / -0 >120 [3048] ≤300 [7620] = +6 [152] / -0 >300 [7620] = +5% / -0% ALL OTHER DIMENSIONAL TOLERANCES: .X = ± .2 [5.08] .XX = ± .02 [51] .XXX = ± .005 [1.27]	APPROVALS CMCCORMICK	DATE 12/02/2004		45 BEECHWOOD DRIVE NORTH ANDOVER, MA 01845		
	CHECKED BY D.PARHAM	12/02/2004		CATEGORY COAXIAL		
APPROVED BY R.CARRICK	12/02/2004	PRODUCT DESCRIPTION CONN TNC M BELDEN 9913 CRIMP	SIZE A	FSCM NO. 43321	DWG. NO. HPC993	REV. A
PROJECTION 	COLOR VARIATIONS MAY OCCUR	SCALE: NONE	CAD FILE: HPC993.SLDDRW	SHEET 1 OF 1		