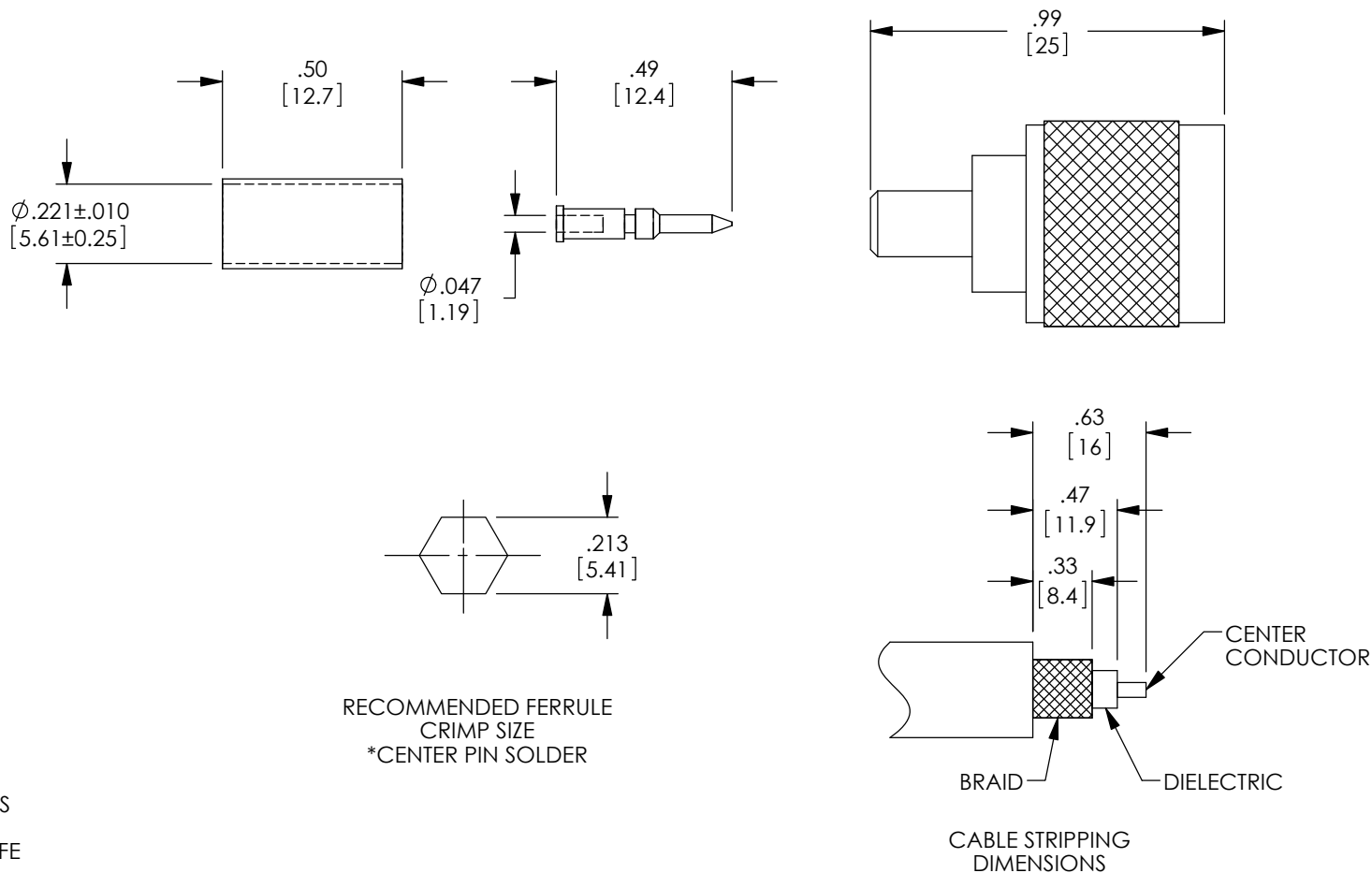


THE INFORMATION CONTAINED IN THIS DRAWING IS THE SOLE
PROPERTY OF L-COM, INC. ANY REPRODUCTION IN PART OR WHOLE
WITHOUT THE WRITTEN PERMISSION OF L-COM, INC. IS PROHIBITED.

REVISIONS			
REV	DESCRIPTION	DATE	APPROVED
A	DRAWING REPLACES HPC783-OD1	10/7/14	D.FRISIELLO



NOTES:

MATERIALS:
BODY: BRASS
FERRULE: BRASS
PIN: BRASS
INSULATOR: PTFE

FINISH:
BODY: NICKEL PLATE
FERRULE: NICKEL PLATE
PIN: GOLD PLATE

ALL DIMENSIONS ARE FOR REFERENCE ONLY.

APPLICATION: BELDEN 7807 CABLE ASSEMBLIES.
IMPEDANCE: 50 OHM

CONNECTOR SHALL BE INDIVIDUALLY PACKAGED IN
ACCORDANCE WITH L-COM SPECIFICATION PS-0031.

RECOMMENDED FERRULE
CRIMP SIZE
*CENTER PIN SOLDER

CABLE STRIPPING
DIMENSIONS

UNLESS OTHERWISE SPECIFIED, DIMENSIONS ARE IN INCHES [mm] OVERALL CABLE LENGTH TOLERANCE: ≤12 [305] = +1 [25] / -0 >12 [305] ≤60 [1524] = +2 [51] / -0 >60 [1524] ≤120 [3048] = +4 [102] / -0 >120 [3048] ≤300 [7620] = +6 [152] / -0 >300 [7620] = +5% / -0% ALL OTHER DIMENSIONAL TOLERANCES: .X = ± .2 [5.08] .XX = ± .02 [51] .XXX = ± .005 [13] PROJECTION 	APPROVALS	DATE	 45 BEECHWOOD DRIVE NORTH ANDOVER, MA 01845	
	DRAWN BY C.MCCORMICK	12/02/2004		
	CHECKED BY D.PARHAM	12/02/2004	CATEGORY COAXIAL	
	APPROVED BY R.CARRICK	12/02/2004	PRODUCT DESCRIPTION CONN TNC M BELDEN 7807 CRIMP	
CONFIGURATION DETAILS OF UNDIMENSIONED FEATURES MAY VARY		SIZE A	FSCM NO. 43321	DWG. NO. HPC783
COLOR VARIATIONS MAY OCCUR		SCALE: NONE	CAD FILE: HPC783.SLDDRW	REV. A
		SHEET 1 OF 1		