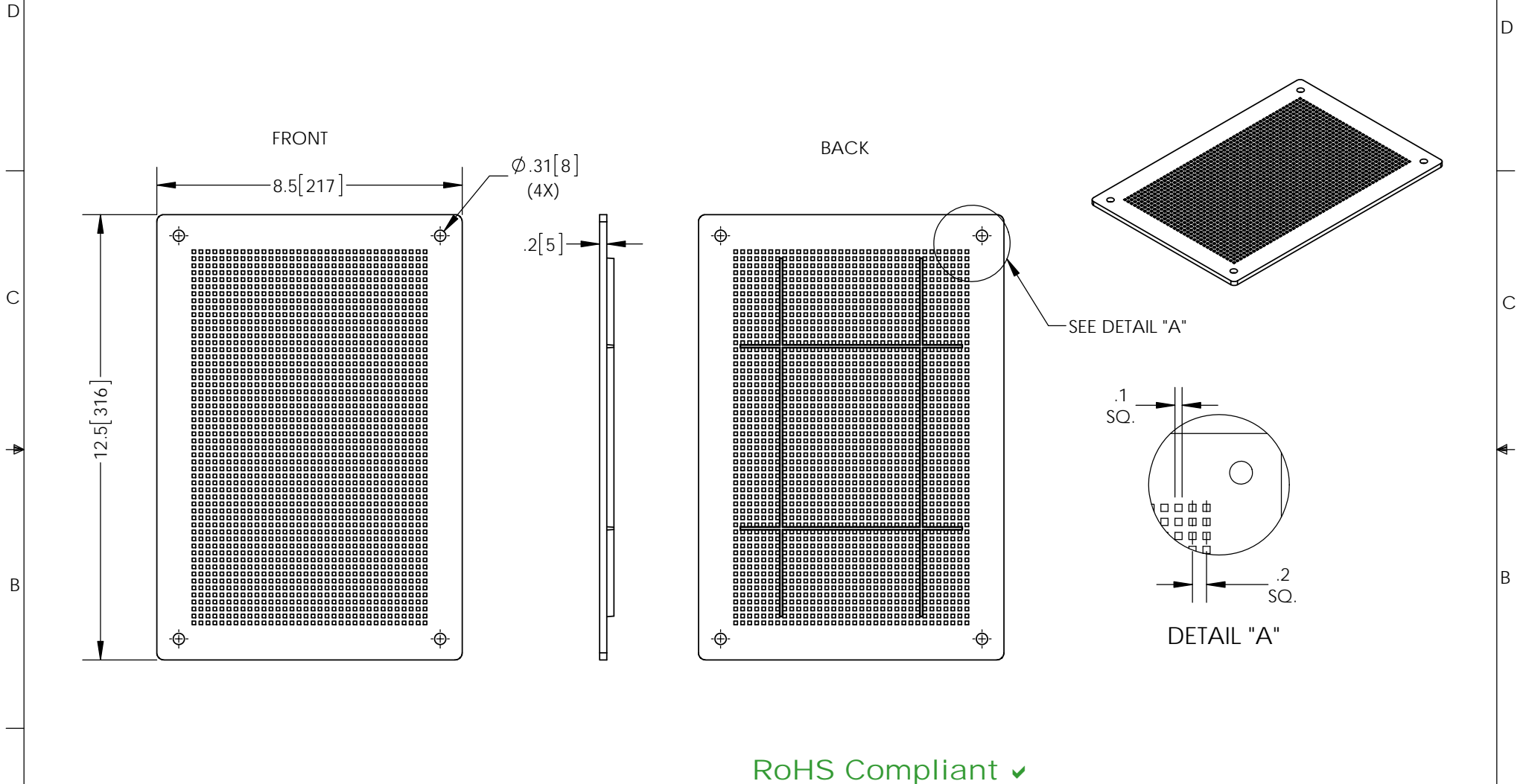


THE INFORMATION CONTAINED IN THIS DRAWING IS THE SOLE PROPERTY OF L-COM, INC. ANY REPRODUCTION IN PART OR WHOLE WITHOUT THE WRITTEN PERMISSION OF L-COM, INC. IS PROHIBITED.

REVISIONS			
REV	DESCRIPTION	DATE	APPROVED
A	INITIAL RELEASE	2/6/13	D.GRIFFIN
B	ECN 6689 ADD MATERIAL NOTE	02/18/13	B.PUCHASKI



NOTES:

MATERIAL: ABS

PACKAGE AS PER L-COM SPEC PKG-00012

- ALL DIMENSIONS FOR REFERENCE ONLY -

RoHS Compliant ✓

UNLESS OTHERWISE SPECIFIED, DIMENSIONS ARE IN INCHES [mm] DIMENSIONAL TOLERANCES: .X = ±.1 .XX = ±.01 .XXX = ±.005 ANGULAR TOLERANCES: ALL = ± 1° PROJECTION	APPROVALS B.PUCHASKI	DATE 02/04/13		45 BEECHWOOD DRIVE NORTH ANDOVER, MA 01845	
	CHECKED BY P.PESA	02/04/13		CATEGORY ENCLOSURES	
	APPROVED BY P.PESA	02/04/13	PRODUCT DESCRIPTION NBE14 UNIVERSAL MOUNTING PLATE		
	CONFIGURATION DETAILS OF UNDIMENSIONED FEATURES MAY VARY COLOR VARIATIONS MAY OCCUR	SIZE A	FSCM NO. 43321	DWG. NO. HGX-NPLATE32	REV. B
SCALE: NONE		CAD FILE: HGX-NPLATE32.SLDDRW		SHEET 1 OF 1	