

THE INFORMATION CONTAINED IN THIS DRAWING IS THE SOLE PROPERTY OF L-COM, INC. ANY REPRODUCTION IN PART OR WHOLE WITHOUT THE WRITTEN PERMISSION OF L-COM, INC. IS PROHIBITED.

REVISIONS			
REV	DESCRIPTION	DATE	APPROVED
A	INITIAL RELEASE	09/11/15	D.GRIFFIN

D

D

C

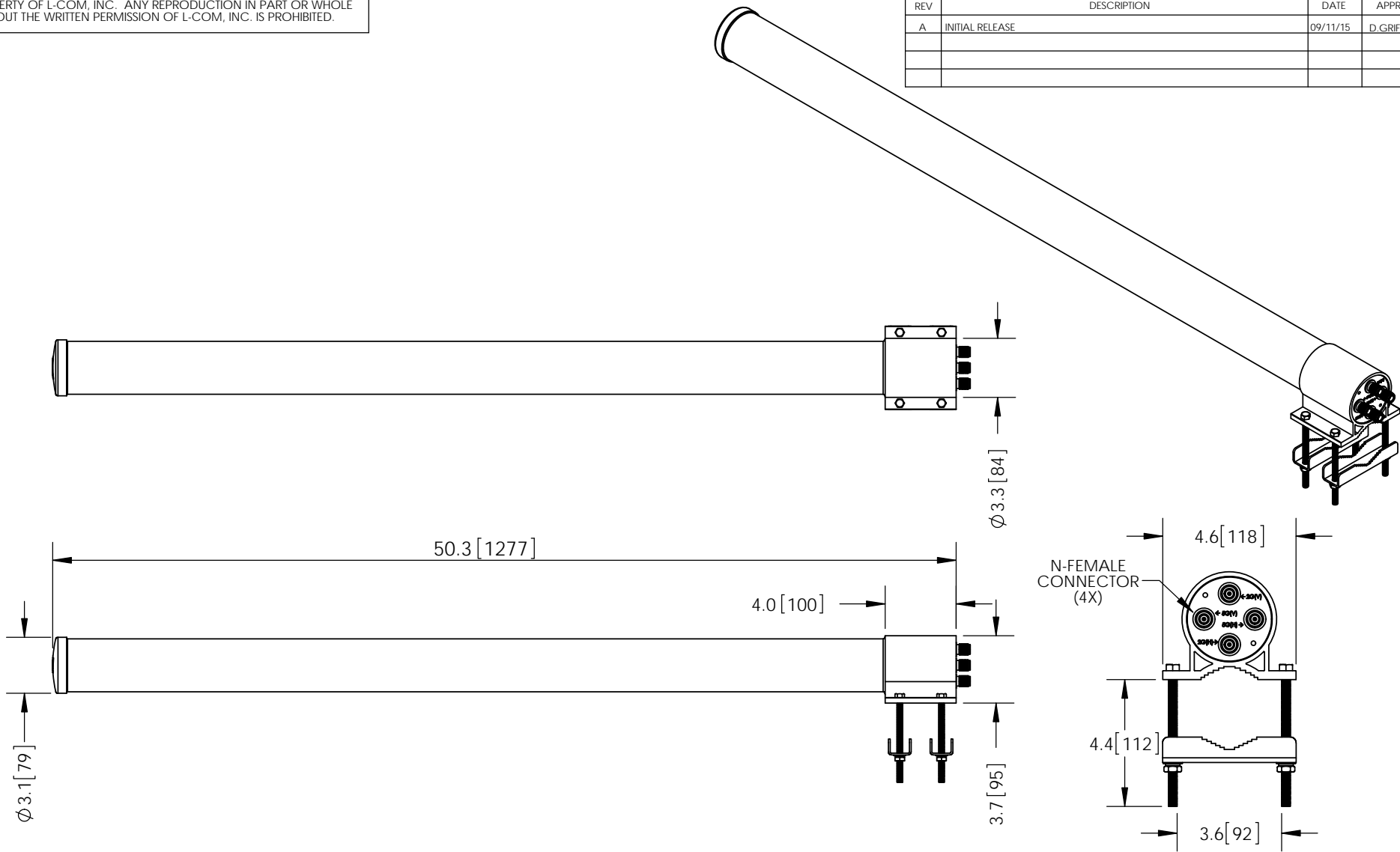
C

B

B

A

A



NOTES:

PACKAGING:
COMPONENT SHALL BE PACKAGED IN ACCORDANCE
WITH L-COM SPEC PKG-00087.

- ALL DIMENSIONS FOR REFERENCE -

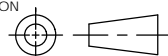
REGULATORY COMPLIANCE:
CE2011/65/EU(RoHS DIRECTIVE)

UNLESS OTHERWISE SPECIFIED,
DIMENSIONS ARE IN INCHES [mm]

DIMENSIONAL TOLERANCES:
.X = ± 0.1 [2.54]
.XX = ± 0.01 [.25]
.XXX = ± 0.005 [.13]

ANGULAR TOLERANCES:
ALL = $\pm 1^\circ$

PROJECTION



APPROVALS
DRAWN BY
B.PUCHASKI
CHECKED BY
K.BURGNER
APPROVED BY
P.PESA

DATE
09/11/15
09/11/15
09/11/15

CONFIGURATION DETAILS OF
UNDIMENSIONED FEATURES
MAY VARY

COLOR VARIATIONS
MAY OCCUR



45 BEECHWOOD DRIVE
NORTH ANDOVER, MA
01845

CATEGORY

ANTENNA

PRODUCT DESCRIPTION
2.4/5.8GHz 11dBi DUAL POLARITY OMNI ANTENNA
W/ N-FEMALE CONNECTORS

SIZE
A

FSCM NO.
43321

DWG. NO.
HG2458-11DPU

REV.
A

SCALE: NONE

CAD FILE: HG2458-11DPU.SLDDRW

SHEET 1 OF 1