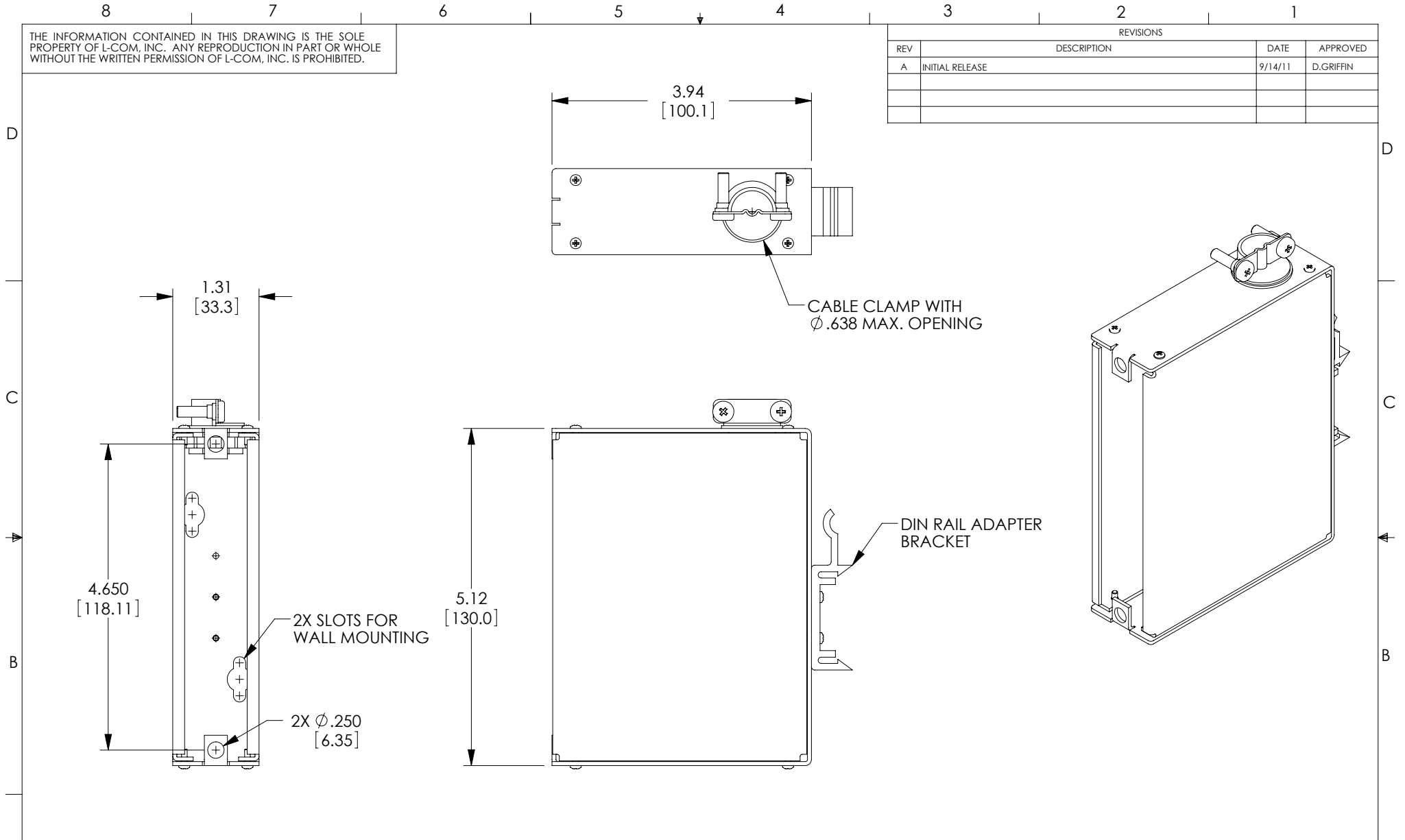


THE INFORMATION CONTAINED IN THIS DRAWING IS THE SOLE PROPERTY OF L-COM, INC. ANY REPRODUCTION IN PART OR WHOLE WITHOUT THE WRITTEN PERMISSION OF L-COM, INC. IS PROHIBITED.

REVISIONS			
REV	DESCRIPTION	DATE	APPROVED
A	INITIAL RELEASE	9/14/11	D.GRIFFIN



- NOTES:
1. MATERIAL: .06 THICK COLD ROLLED STEEL.
  2. PANEL FINISH: FLAT BLACK POWDER COAT.
  3. ALL DIMENSIONS ARE FOR REFERENCE ONLY.
  4. PANEL ASSEMBLY SHALL BE INDIVIDUALLY PACKAGED IN ACCORDANCE WITH L-COM SPECIFICATION PS-0014.

UNLESS OTHERWISE SPECIFIED, DIMENSIONS ARE IN INCHES [mm] OVERALL CABLE LENGTH TOLERANCE: ≤12 [305] = +1 [25] / -0 >12 [305] ≤60 [1524] = +2 [51] / -0 >60 [1524] ≤120 [3048] = +4 [102] / -0 >120 [3048] ≤300 [7620] = +6 [152] / -0 >300 [7620] = +3% / -0% ALL OTHER DIMENSIONAL TOLERANCES: .X = ±.2 .XX = ±.02 .XXX = ±.005	APPROVALS DRAWN BY D.FRISIELLO	DATE 7/7/11		45 BEECHWOOD DRIVE NORTH ANDOVER, MA 01845			
	CHECKED BY M.SEDLESKI	DATE 7/7/11		CATEGORY RACK PANELS			
	APPROVED BY M.MARTINEZ	DATE 7/7/11	PRODUCT DESCRIPTION FIBER ADAPTER SINGLE GANG	SIZE <b>A</b>	FSCM NO. <b>43321</b>	DWG. NO. FSP-1DIN	REV. <b>A</b>
	PROJECTION 	CONFIGURATION DETAILS OF UNDIMENSIONED FEATURES MAY VARY	COLOR VARIATIONS MAY OCCUR	SCALE: NONE	CAD FILE: FSP-1DIN.SLDDRW	SHEET 1 OF 1	